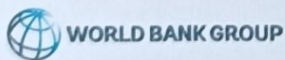




WEST POKOT COUNTY CLIMATE CHANGE ACTION PLAN

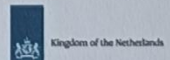
2023 - 2027



Ministry of Internal Security
DANIDA



KfW



Copyright page

© West Pokot County Climate change Action Plan 2023-2027

This publication can be produced in part or whole and in any form for educational or not for profit purposes without special permission from the copyright holder, provided the acknowledgement of the source is made.

For bibliographic purposes this document should be cited as follows:

West Pokot County Climate change Action Plan 2023-2027, County Government of West Pokot

All correspondence should be addressed to:

The County Secretary,

County Government of West Pokot

P. O. Box 577 30600 Kapenguria

Tel. +254 053-201-4000

Email: info@westpokot.go.ke

Website: www.westpokot.go.ke

FOREWORD



This County Climate Change Action Plan (CCCAP) report was achieved through the involvement of key stakeholders throughout the process of its development. I wish to underscore our ward climate planning committees whose participation was integral to the success of the project especially during the community engagement exercise; not forgetting the technical task team for their hard work in collecting and analyzing data to provide us with valuable insights.

The report is crucial because in it, climate risks facing the county have been prioritized namely droughts, floods, lightning, pests and diseases, erratic rains just to mention but a few. Also covered in the report are priority locally led climate actions. This report will assist our County Government in adapting and mitigating climate impacts with special focus on disaster risk reduction, water resources development and conservation, environment and forest resources development.

As the CECM in charge of Climate Change, I wish to assure the stakeholders and the county citizens at large that my department will do all within its means to implement this report to ensure our collective wellbeing and resilience to climate change. This report serves as a valuable resource that can inform more informed decision-making, creating new opportunities for sustainable growth and development.

I call upon all stakeholders and individuals to join hands with my department to take steps towards better climate risk management and mitigation efforts. Let us take the findings of this report seriously and make positive changes for our future.



Hon. Lucky Jemutai Litole

CECM-Water, Environment, Natural Resources and Climate Change Department

ACKNOWLEDGEMENT



On behalf of the West Pokot County Government; Water, Environment, Natural Resources and Climate Change Department and the entire technical task team, I would like to express our deepest appreciation to all who contributed their time and expertise to the preparation of this County Climate Change Action Plan (CCCAP).

We extend our sincere gratitude to the participating communities, stakeholders, and experts who gave generously of their time and resources to collect and analyze data on climate hazards, assess vulnerabilities, and identify community resources and assets to mitigate risks. The insights gained from your participation are integral to this report's development and will help inform future decision-making in our county.

We would like to extend our special appreciation to the technical task team members for their commitment and dedication to this project, their tireless efforts in coordinating, organizing and implementing the participatory climate risk assessment process. They provided invaluable insight, expertise, and guidance throughout the process.

Lastly, we appreciate the support and guidance provided by the County Executive Committee Member for Water, Environment, Natural Resources and Climate Change throughout the project. The establishment of the Task Team was partly an initiative of the department and its importance cannot be underestimated.

Thank you all for your contributions and efforts in preparing this important report. We look forward to continuing working together as we take proactive steps to mitigate against climate risks in our county.

Mr. Leonard Kamsait

Chief Officer - Water, Environment, Natural Resources and Climate Change Department

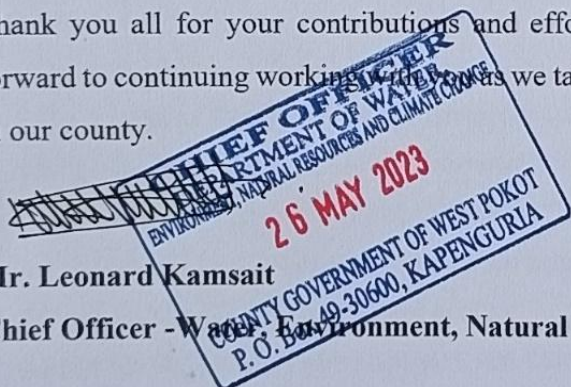


Table of Contents

Copyright page.....	
FOREWORD.....	Error! Bookmark not defined.
ACKNOWLEDGEMENT.....	i
Lists Figures.....	vi
ACRONYMS.....	viii
DEFINITION OF TERMS.....	ix
Executive Summary.....	xi
CHAPTER ONE: BACKGROUND AND CONTEXT.....	0
1.1 Introduction & Background.....	0
1.2 Purpose and process of the CCCAP.....	0
1.3 Underlying Climate Resilience Context.....	2
1.3.1 Impacts of Climate Hazards in the County.....	2
1.3.2 County Climate Hazard Map.....	5
1.3.3 Summary of Differentiated Climate exposure and Vulnerability of key groups and livelihoods in the County.....	5
1.4 Brief Overview of Climate Change Actions in the County.....	7
1.4.1 Mainstreaming of NCCAP in County Actions.....	7
1.4.2 Climate Change in CIDP.....	7
1.4.3 Other key climate actions/strategies in the County.....	7
CHAPTER TWO: POLICY ENVIRONMENT.....	8
2.1 National Policy Context.....	8
2.1.1 The National Perspective.....	8
2.1.2 National Legal and Policy Framework.....	9
2.2 County Enabling Legal & Policy Framework.....	9
CHAPTER THREE: PRIORITY CLIMATE CHANGE ACTIONS.....	10
3.1 Identification of strategic climate action priorities in the PCRA.....	10
3.2 Priority County Climate Change Actions.....	10
CHAPTER FOUR: DELIVERY MECHANISMS FOR CCAP.....	12
4.1 Enabling Factors.....	12
4.1.1 4.1.1 Enabling Policy and Regulation.....	12
4.1.2 4.1.2 Mainstreaming in the CIDP.....	13
4.1.3 4.1.3 Multi-stakeholder participation processes.....	13
4.1.4 4.1.4 Finance - County Climate Change Fund.....	13

4.1.5	4.1.5 Governance - County Government Structures.....	13
4.1.6	Governance - Climate Change Planning Committees.....	16
4.1.7	4.1.7 Climate Information Services & Climate Data Access.....	17
4.1.8	Dissemination of Climate and Sectoral Co-advisories.....	19
4.1.9	4.1.8 Resilience Planning Tools.....	19
4.1.10	4.1.9 Measurement, Reporting and Verification.....	19
4.2	Institutional Roles and Responsibilities.....	20
4.2.1	Implementation and Coordination Mechanisms.....	20
4.2.2	Directorate of Climate Change.....	20
4.2.3	County Climate Change Planning Committee.....	21
4.1	Implementation Matrix.....	25

Lists Figures

Figure 1 Climate Change Impacts-Landslide in Pokot Central Sub-County.....	2
Figure 2: Suam River in Pokot North Sub-County Witnessing decrease in Water level annually.....	3
Figure 3: Gulley Erosion in Emboasis Primary School, West Pokot Sub-County.....	4
Figure 4 County Climate Hazard Map.....	5
Figure 5 County Government Structures.....	14

ACRONYMS**GoK****Government of Kenya**

CECM	County Executive Committee Member
CIDP	County Integrated Development Programme
C.O	Chief officer
IFRC	The International Federation of Red Cross and Red Crescent Societies
IPCC	The Intergovernmental Panel on Climate Change
KIHBS	Kenya Integrated Household Budget Surveys
NDC	National Determined Contribution
UNFCCC	The United Nations Framework Convention on Climate Change
NCCAP	National Climate Change Action Plan.
PCRA	Participatory Climate Risk Assessment
WCCPC	Ward Climate Change Planning Committee.

DEFINITION OF TERMS

Climate

The average weather. The mean and variability of temperature, rainfall, wind etc. over a relatively long period of time (typically 30 years). One popular phrase can help distinguish weather from climate: “Climate is what you expect. Weather is what you get.” (Source: IFRC 2007)

Climate change

State of Continuous change in climate over time. In principle, climate change can be due to natural processes or a result of human activity. The media often refers to “global warming” (an increase in the average temperature of our planet), which is actually the initial manifestation of an increasing greenhouse gas effect. Warmer temperatures lead to further climatic changes, such as changes in rainfall patterns and in the frequency or intensity of extreme weather events. In the context of the United Nations Framework Convention on Climate Change (UNFCCC), the term is linked to climate change that is caused by human activities that alter the composition of the atmosphere, particularly greenhouse-gas emissions due to burning of fossil fuels.

(Source: modified from IFRC 2007)

(Climate change) Adaptation

Adjustments in response to actual or expected climate change, to reduce negative impacts or take advantage of opportunities. (Source: IFRC 2007)

The official definition from the Intergovernmental Panel on Climate Change (IPCC) is “the process of adjustment to actual or expected climate and its effects, in order to moderate harm or exploit beneficial opportunities.” In practical terms, adaptation refers to the changes people and institutions make to adjust to observed or projected changes in climate. It is an ongoing process that aims to reduce vulnerability to climate change. Adaptation can also occur in natural systems, where it is the process of adjustment to actual climate and its effects, sometimes facilitated by human intervention. (Source: CARE 2019, IPCC 2018)

Disaster

A situation in which the impact of a hazard (such as a storm or other extreme weather event) negatively affects vulnerable individuals or communities to a degree that their lives are directly

threatened or sufficient harm is done to economic and social structures to undermine their ability to survive or recover. (Source: IFRC 2007)

Hazard

A potentially damaging physical event that may cause loss of life or injury, property damage, social and economic disruption or environmental degradation. (Source IFRC 2007)

Risk

The probability of harmful consequences due to interaction between hazards and vulnerable conditions. (Source: IFRC 2007)

Vulnerability

The degree to which someone or something can be affected by a particular hazard (from sudden events such as a storm to long-term climate change). Vulnerability depends on physical, social, economic and environmental factors and processes. It is related, for instance, to the places where people live, the strength of their houses, the extent to which their crops can survive adverse weather, or whether they have organized evacuation routes and shelters.

Physical vulnerability relates to the built environment and may be described as “exposure”

Social vulnerability is caused by such things as levels of family ties and social networks literacy and education, health infrastructure, the state of peace and security.

Economic vulnerability is suffered by people of less privileged class or caste, ethnic minorities, the very young and old etc. They suffer proportionally larger losses in disasters and have limited capacity to recover. Similarly, an economy lacking a diverse productive base is less likely to recover from disaster impact which may also lead to forced migration.

Environmental vulnerability refers to the extent of natural resource degradation, such as deforestation, depletion of fish stocks, soil degradation and water scarcity that threaten food security and health.

(Source: IFRC 2007)

Executive Summary

The County Climate Change Action Plan is a comprehensive document that aims to guide the county towards mitigating and adapting to the effects of climate change. The Plan is informed by the background and context of the county, the policy environment, priority climate change actions, and the delivery mechanisms for implementing climate change actions.

Chapter 1 gives a brief background of the county, including its geographical location, climate patterns, and demographic characteristics. It also highlights the current state of climate change in the county, the impacts it has on the environment, and the economy.

Chapter 2 discusses the policy environment, which outlines the national and international frameworks that guide climate change action. The chapter highlights the county's role in advancing climate change policy, the legislative framework, and the institutions responsible for implementing climate change actions.

In Chapter 3, the plan outlines priority climate change actions that the county should prioritize to mitigate and adapt to the effects of climate change. The actions identified are informed by scientific evidence, stakeholder engagement, and the county's development needs.

Chapter 4 focuses on the delivery mechanisms for implementing the climate change action plan. This chapter outlines the various stakeholders involved in implementing climate change actions, the institutional arrangements needed, and the sources of funding to support the plan's implementation.

Overall, the County Climate Change Action Plan is a comprehensive document that provides guidance on how the county will address climate change. It is expected that its implementation will result in a more resilient county with reduced vulnerability to the effects of climate change.

CHAPTER ONE: BACKGROUND AND CONTEXT

1.1 Introduction & Background

The impact of climate change on livelihoods and economic growth is significant and will only get worse if relevant measures are not put in place and implemented by everybody.

At present, Kenya is in the top 20 of countries that are most vulnerable to climate change. West Pokot County too is extremely susceptible to impacts of climate change (Floods, Erratic rainfall, Drought, Landslides, Lightning strikes, pests and diseases). The most vulnerable sectors impacted on by climate change in the county are Forestry and energy, Water, agriculture and pastoral economy, health, , wildlife, transport infrastructure.

Specific focus is needed to reduce and adapt and mitigate to climate risks facing Kenya and in so doing, the Government of Kenya has partnered with World Bank, and other international Financial Institutions and agencies to implement Financing Locally Led Climate Action Program which is aimed at building resilience and mitigating climate change shocks at the community (grassroot) level.

To Plan and implement appropriate climate change actions at the community level, World Bank through Financing Locally-Led Actions has ensured that a Participatory Climate Risk Assessment be done by the local communities.

West Pokot County undertook Participatory County Climate Change Action Plan between 15th and 23rd May 2023 in its 20 Wards (Masol, Lomut, Weiwei, Sekerr, (Tapach, Lelan. Batei , Chepareria Alale, Kiwawa, Kapchok, Kasei, Suam, Kodich, Riwo, Mnagei, Kapenguria, Siyoi, Sook, & Endugh) whereby men, women, youths, people with disabilities, minority groups, and the elderly attended the exercise.

1.2 Purpose and process of the CCCAP

This focuses on the participatory development of the county climate change action plan. The process draws from the climate risk assessment in Phase 1, as well as other available material relevant for climate action planning at county, regional and national context, including any existing Climate Change Action Plan (CCCAP), drafts of the National Climate Change Action Plan and the CIDP. Phase 2 consists of eight steps detailed below.

1. Review of key documents
2. Collecting of public input

3. Drafting of County Climate change action Plan
4. Validation Workshop for the CCCAP
5. Public feedback on the CCCAP
6. Development of the second draft of CCCAP
7. Presentation to the Cabinet for approval
8. Presentation to the County Assembly for adoption
9. Ceremonial approval /Launch by the Governor.

These steps are designed to ensure a participatory and inclusive approach where key stakeholders at all levels get opportunities to actively input in the plan, discuss it and validate it and ensure the plan is developed through a process that adheres to the locally led climate action principles.

This phase aims to provide the linkage between national climate change action planning and county climate change action planning for effective implementation of climate change policy and strategic actions at all levels. The Kenya Climate Change Act, 2016 anticipates collaboration between all stakeholders including national and county governments on planning and execution of climate response in the country. While the Act requires the Cabinet Secretary in charge of Climate Change in the Country to prepare the National Climate Change Action Plan (NCCAP) every five years, the counties are required to integrate key actions in the plan across sectors in their plans; established practice involves the task force on NCCAP carrying out consultations with counties to identify priority actions in the spirit of bottom-up planning.

Phase 3 is currently envisaged to have three broad steps, this phase is designed to uphold participatory planning with a focus on trans-boundary climate risks across landscapes covering several counties, ideally at the regional economic bloc level. This phase will be led by the national taskforce in charge of NCCAP development with the support of point persons from each of the target regional economic block. Required expertise or regional representation, including from national government agencies working at county or regional level, will form the team.

1.3 Underlying Climate Resilience Context

1.3.1 Impacts of Climate Hazards in the County

The county is 74.5% ASAL, with a forest cover of only 3.9%, a fragile ecosystem, with low investment in environmental goods and services. This increases the county's vulnerability to climate change. Poverty levels currently stand at 57.4 percent (KIHBS, 2016) and livelihood economy is highly pastoral and dependent on natural resources (pasture, water, Fuel wood, timber, wild fruits,) which are sensitive to climatic conditions. Unreliable and great variation in total amount and patterns of the bimodal rainfall type. Long rains in the past usually started in March to August but in 2019, they delayed until June and short rains between October and December. The high and sudden precipitation witnessed in December caused massive landslides in Pokot central sub county.



Figure 1 Climate Change Impacts-Landslide in Pokot Central Sub-County

Constant failure of maize and sorghum crop farming in the lowland areas due to droughts. Increased occurrence of floods and massive soil erosion in both highlands and lowlands. Torrential rainfall, landslide and mudflows have become common in Lelan Ward- (Koghmu, Mokoyon, Lain, Chesorom, Chepkono villages), Batei Ward - (Penon, Parua, Sondany, Ortum, Kerelwa), Weiwei Ward - (Muino, Tororo, Solion, Psakas, Boito), Lomut Ward - (Chepkokogh, Cheratak, Tilakai. Droughts have prolonged causing farmers to shift to riparian cultivation. This aggravates siltation in the lower parts of Rivers Suam, Weiwei, Kerio, Muruny. Increased trading on wood fuel and charcoal. Most households in Riwo, Suam, Masol, and Lower Wards of

Kapenguria, Mnagei, Chepareria, Batei, Sekerr, Weiwei, Lomut have engaged in the Charcoal business for survival thereby increasing deforestation and consequently the impacts of climate change. Cross border migration of livestock in search of pasture and water contributes to breakup of family units, education for children, poor health services/amenities and low economic productivity ,as well as, increased conflict among neighbouring communities(Marakwet, Turkana, Karamojong and Sebei), counties (West Pokot, Turkana, Elgeyo Marakwet, Baringo and Countries (Uganda and Kenya). There is reduced crop and livestock productivity due to temperature variation, reduced precipitation and increased crop pests and diseases for example the lowlands experience temperatures of up to 30⁰c and the highlands experience temperatures of up to 15°C. These high temperatures in the lowlands cause high evapo-transpiration which is unfavorable for crop production There is reduced water volume in the main rivers (Kerio, Muruny, Weiwei, Sighya, Kibas, Nzoia, and Suam) due to deforestation in the Water towers, encroachment of wetlands, cultivation along river banks, and effects of global warming. These have resulted in conflict between the upstream and downstream users. Low recharge of aquifers causing low water table and low volumes in wells and boreholes.



Figure 2: Suam River in Pokot North Sub-County Witnessing decrease in Water level annually



Figure 3: Gulley Erosion in Emboasis Primary School, West Pokot Sub-County

1.3.2 County Climate Hazard Map

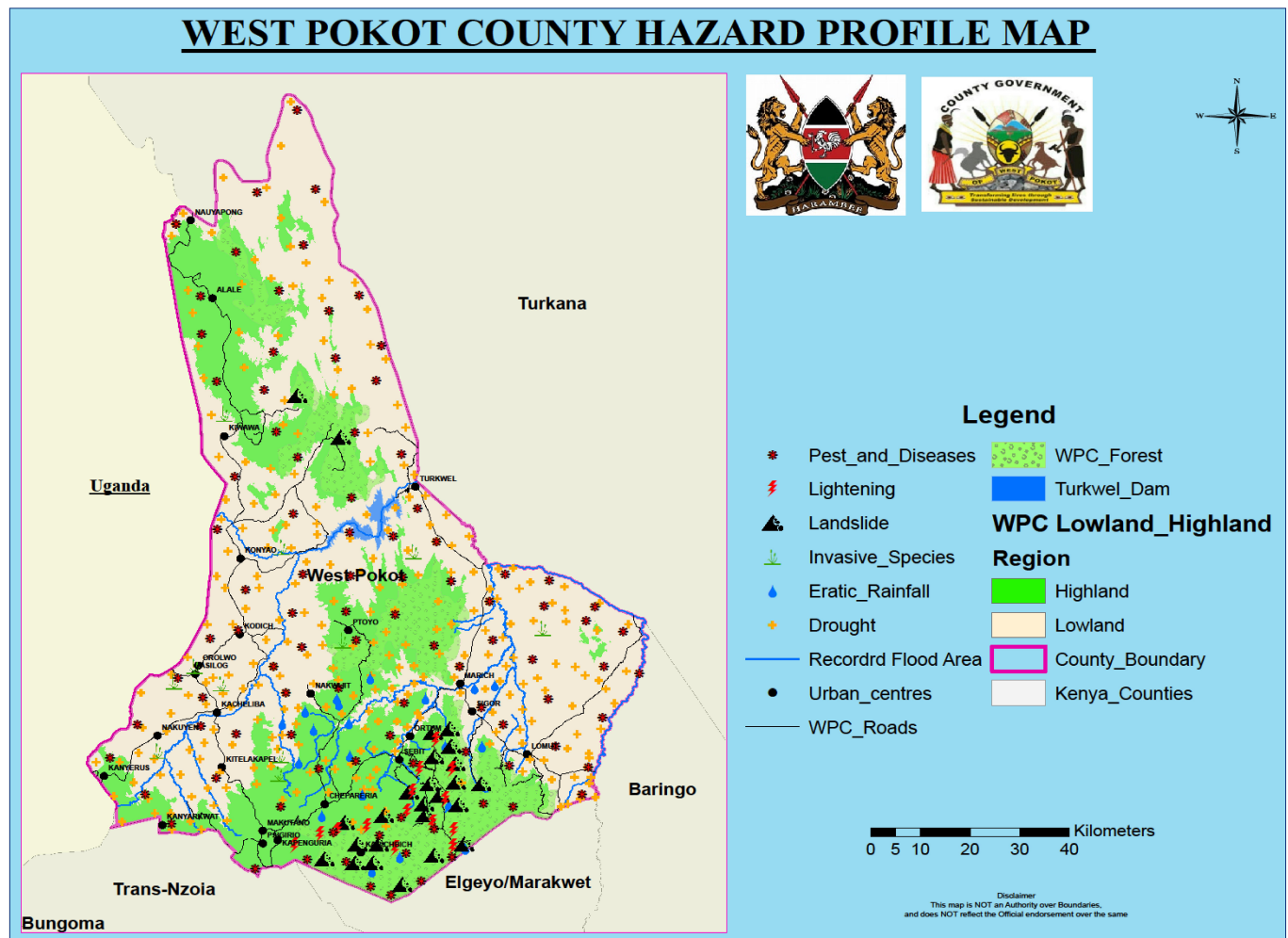


Figure 4 County Climate Hazard Map

1.3.3 Summary of Differentiated Climate exposure and Vulnerability of key groups and livelihoods in the County

The increase in frequency and severity of identified and prioritized hazards were clearly listed as droughts, floods, heat stress, pests and diseases by majority of stakeholders and farmers during the climate risk assessments. These hazards have highest impacts that need to be tackled by all stakeholders now and into the future. Drought was expected to affect all livelihoods and thus food insecurity, with high incidences of malnutrition cases among under-fives and lactating mothers. Floods were expected to affect crops, lives, infrastructure and displacements of populations. Heat stress was expected to affect livestock. Pests and diseases were expected to reduce in productivity and general health of human beings. The exposure and vulnerability of the key groups to these climate scenarios were explained below;

Livestock keepers: Pasture and water availability are two major natural resources that sustains livestock and they more depleted during periods of drought. Drought and heat stress conditions are the main

causative factors on decline of milk productions, increased livestock mortalities and cropping up of opportunistic diseases like (FMD, PPR, CBPP, ECF, CCPP, New castle). During times of drought and heat stress, livestock keepers find it hard on high costs of operations and maintenance. Livestock losses will poveralise households and in turn increase domestic feuds. Livestock farmers who keep camels, goats and donkeys are much better during times of drought, since these livestock can withstand climate conditions for a longer period of time. Fish farmers find it hard to sustain their enterprises during periods of droughts, when water sources are low and contaminated. This may lead to deaths and losses. Bee keepers too are more affected during periods of drought since nectar availability is low and water sources are dry or limited.

Crop Farmers: Vulnerable members of the society with less capital to till their lands with high costs of land inputs (increased seed prices especially fast and drought tolerant varieties and fertilizers), are likely to be more affected by drought impacts. Compounded by highly rainfall variability in terms of dry spells and erratic rainfall, lowlands farmers constantly live on relief food, probability of crop failure is high. Increased flash floods and landslides in the highlands too are expected to cause soil erosion, formation of gullies on farms, water logging and continuous loss of top soils will exacerbate the already poor yields. Poor land use management will also accelerate the effects of climate change and thus farmland productions shall become a challenge. Pests and diseases affects productions at all levels, threatening nutrition status. Reduced water for irrigation in rivers and dams leading to conflicts on water usage example is low productions of onion farmers in Ortum during times of drought.

Women and Girls: Women and girls experience the greatest impacts of climate change, which amplifies existing gender inequalities and poses unique threats to their livelihoods, health, and safety. Women and girls are likely to be affected more due to the socio-cultural roles placed upon them. They may face difficulties looking for water and other alternative sources of livelihoods. Because of cultural practices placed upon them such as ownership of land and livestock were prohibited and preserved for men. Then women may not be able to have access to sale or manage these vital resources hence high cost of living. Similarly, because of the projected weather extremes, pregnant women may highly be exposed to human diseases since their immune system is weak. It has been said women eat last during times of drought and men with thorax eat first and this may jeopardize their eating habits and general health when food is insufficient.

Elderly: Aging and some medications can change the body's ability to respond to heat. Climate warming may put older adults more at risk for heat illnesses and death. Similarly, there may be high incidences of human diseases especially malaria and water borne diseases due to their reduced immune system. Many older adults have limited mobility, increasing their risks before, during, and after an extreme weather event.

People living with disabilities: Because of their vulnerabilities and extend of impacts of climate change, this group are limited to financial resources to counter or adapt to it. Their coping capacities are low during landslides, floods and droughts periods.

School going children: Droughts may lead to food insecurity and malnutrition, which has a bearing on school enrolments since majority of rural and slums children stay at home while their parents are on such food. Day school children find it hard to cross swollen rivers and destroyed bridges as a result of floods and thus high absenteeism and school drop outs. Drought impacts may escalate inter and intra community conflicts and school going children are highly affected.

Business communities: During times of floods, infrastructure are cut off and this may hinder goods and services reaching markets. So small scale traders and customers will find it hard to sell and buy at right since farm produce are perishable. This translates to low incomes and losses.

Human Health: Weather related diseases may intensify and new health threats may emerge. There may be increased risk of vector and water borne diseases such malaria, typhoid and cholera. These diseases will lower capacities of people to perform well and at times may cause deaths.

1.4 Brief Overview of Climate Change Actions in the County

1.4.1 Mainstreaming of NCCAP in County Actions

The CCAP preparation was informed by PCRA report and CIDP 2023-27 plan which captured climate change actions under various sectors priorities and strategies where proposed adaptation actions are integrated into the sectoral and department plans for implementation.

1.4.2 Climate Change in CIDP

Climate change priorities and strategies have been aligned in Environmental Protection, Water and Natural Resources Sector in CIDP 2023-27

1.4.3 Other key climate actions/strategies in the County

- Establish climate change institutions in the county.
- Mainstream climate change in all sectors.
- Undertake Participatory Climate Risks Assessment.
- Community sensitization on climate change.
- Strengthen county risk reduction and mitigation measures from climate-related disasters.
- Strengthen ecosystems protection from degradation.
- Climate proofing of county infrastructure.
- Promote renewable and efficient green energy technologies.

CHAPTER TWO: POLICY ENVIRONMENT

2.1 National Policy Context

Derived from Kenya Vision 2030, the Government of Kenya (GoK) has a range of policies, strategies, plans, and financing mechanisms that integrate climate change into wider government programs, including the National Climate Change Response Strategy (2010), the National Climate Change Framework Policy (2016), and the Climate Change Act (2016). The Act is put into action in the National Climate Change Action Plan (NCCAP, 2018-2022), which sets out a range of low-carbon and resilient development pathways for the country through several Enabling and Readiness Actions and Priority Action Areas at the central and decentralized levels.

2.1.1 The National Perspective

This starts with the country's Constitution, which, under Article 42, guarantees every Kenyan the right to a clean and healthy environment and encourages participatory resource management and equitable benefits. The revised Environmental Management and Coordination Act (Cap 387) reinforce this, which includes a provision (under Section 57) for fiscal incentives, disincentives or fees to induce or promote the proper management of the environment and natural resources or the prevention or abatement of environmental degradation. Similarly, the Climate Change Act 2016 provides a regulatory framework for an enhanced response to climate change, allowing for mechanisms and measures to achieve low-carbon climate development, and for connected purposes. A range of strategies, policies, and action plans are detailed in subsequent government documents including the National Climate Change Framework Policy (2016), the National Policy on Climate Finance (2018), the NCCAP (2018–2022), and the Green Economy Strategy and Implementation Plan (2016–2030). They highlight the need for a fiscal incentives policy to accelerate transition to a green and circular economy through increased financing from the alternative source from the private sector.

Under the Climate Change Act 2016, the government is required to develop five-year NCCAPs to guide the mainstreaming of adaptation and mitigation actions into the sector functions of the national and county governments. The latest NCCAP, covering the period 2018–2022, identifies a series of actions for government and other stakeholders, with a particular focus on adaptation. The National Policy on Climate Finance (2018) provided a clear direction on mechanism for enhanced mobilization of climate finance from all sources: private, public, multi-lateral Agencies, bilateral, philanthropic, etc. to finance Kenya's updated NDC and NCCAPs. A critical document reflecting Kenya's domestic ambition in the international arena is its updated NDC. This was recently submitted to the United Nations

Framework Convention on Climate Change (UNFCCC), and specifies both mitigation and adaptation actions.

2.1.2 National Legal and Policy Framework

Kenya has demonstrated leadership in establishing a policy framework to manage climate risk; however, climate action is underfunded. Derived from Kenya Vision 2030, the Government of Kenya (GoK) has a range of policies, strategies, plans, and financing mechanisms that integrate climate change into wider government programs, including the National Climate Change Response Strategy (2010), the National Climate Change Framework Policy (2016), and the Climate Change Act (2016). The Act is put into action in the National Climate Change Action Plan (NCCAP, 2018-2022), which sets out a range of low-carbon and resilient development pathways for the country through several Enabling and Readiness Actions and Priority Action Areas at the central and decentralized levels.

As part of Kenya Vision 2030, the National Climate Change Action Plan 2013-17 has been developed, to guide ‘the transition of the country towards a low carbon climate resilient development pathway’ (NCCAP, 2013). This programme shares many of the priorities of NCCAP 2013-17 including, improved water resource management, restoration of forests on degraded lands, and climate smart agriculture and agroforestry. The climate risk-based adaptation analysis conducted in 20 Wards of West Pokot County during the preparation of the County Climate Change Action Plan (CCCAP) built on the findings of the National Climate Change Response Strategy (NCCRS), and was commissioned to among others develop a set of potential and priority adaptation actions to address projected climate impacts per sector that will feed into Kenya’s National Adaptation Plan (NAP).

2.2 County Enabling Legal & Policy Framework

Analyse the county’s existing policy, legal and regulatory framework for climate change. This would include county climate change acts, CCCF Act and Regulations, CIDPs, sectoral policies, spatial plans, etc.

West Pokot County has the following Climate Change legal frameworks;

- a) West Pokot County Climate Change Policy Sessional Paper No.2 December 2020
- b) West Pokot County Climate Change Financing Policy Sessional Paper No.3 February, 2021
- c) West Pokot County Climate Change Fund Act 2021
- d) West Pokot County Climate Change Fund Regulations 2022

These Policies aims enhance County Citizens resilience and adaptation to climate change hazards and related impacts through affirmative financing of climate change actions from own county annual development budget, and through international, Continental, National, Regional, Commercial Entities, NGOs, Faith Based organizations, Private Entities, with agenda of addressing climate change.

CHAPTER THREE: PRIORITY CLIMATE CHANGE ACTIONS

The prioritized actions/projects in the 20 Wards of West Pokot County fall within the agriculture, environment, and water sectors and could include projects that improve community access to water, rehabilitation of degraded land through tree planting, climate smart agriculture, promotion of renewable energy sources, and others

3.1 Identification of strategic climate action priorities in the PCRA

- Drought
- Floods
- Livestock diseases
- Crops Pests and Diseases
- Landslides and mudslides
- Gulley erosion
- Lightening strikes

3.2 Priority County Climate Change Actions

The following priorities have been recommended for Climate Change adaptation;

1. Forestry

Carrying out community training on climate change, Enacting laws that protects, manages and conserves county forests, Establishing drought resistant trees and fruit trees in drylands, Establish trees nurseries to increase the provision of seedlings, Protection of water catchments, riverbanks, swamps and fragile lands

2. Agriculture

Provision of downscaled weather information and farm inputs, water harvesting, research and dissemination of drought resistant crops, proper management of agricultural waste e.g. using manure instead of inorganic and promotion of agroforestry especially tree-based intercropping.

3. Water

Construction of dams and water pans, protection of water towers, riverbanks and water bodies.

Building capacity for water quality improvement and awareness campaign to promote water efficiency measures.

4. Livestock/pastoralism,

Breeding of animals that adapt well to climate vagaries, regular vaccination campaigns, promotion of economic livelihood diversification; e.g. cultivation of drought-tolerant food crops such as millet and bee-keeping for honey production and awareness campaigns among pastoral communities to underscore the importance of balancing stocking rates with the available land resources as a way of ensuring sustainable pastoralism.

5. Infrastructure:

Ensuring that the infrastructure is climate-proofed over its lifespan, which includes the construction of culverts, factoring a maintenance component into all infrastructural development funds and designing infrastructure that can withstand the prevailing climate conditions

6. Disaster Management

Strengthening disaster preparedness; proper planning of urban settlements, which takes into consideration the expected high growth rate of urban population due to climate-induced migration from rural areas to urban centres

While local communities will be the primary beneficiaries of climate actions, the Program is also expected to generate economic and employment benefits for a wider group of beneficiaries in the counties who will be engaged in the implementation of the actions. They will also benefit indirectly from resilience actions and investments, namely through improved county-level institutions and more institutionalized climate risk management.

The Program's direct beneficiaries are communities in rural wards of West Pokot County, many of them are in arid and semi-arid areas, that are affected by climate change impacts such as droughts and floods, outbreak of climate-related diseases, low farmland productivity, and declining livestock numbers due to droughts and diseases, Landslides among others. Wards will be selected for investments based on a participatory climate risk assessment process that will consider climate exposure and vulnerability, and within these wards, the Program will prioritize the most vulnerable and marginalized rural populations to make sure they better absorb and adapt to the impacts of climate change shocks and stressors in their localities. The Program will address gender and other equity aspects by ensuring that women, who are disproportionately affected by climate change, as well as youth, marginalized and vulnerable groups, minorities, senior citizens, poor households, and persons with disabilities, will benefit from the Program.

This section should take a cross-sectoral perspective and consider focusing on investment priorities that strengthen the adaptive capacity and resilience of key livelihood, social and economic systems within the county. Specific sectoral actions can also be identified with an explanation of how they benefit these different systems. This section should also identify the sequencing of priority actions over the 5-year plan with an explanation of how they will together over time build the resilience of the county to current and future climate risks.

Priority actions can be identified at the county, sub-county and ward levels and need to take into account the priorities identified during the public participation steps in the climate action planning process as well as priorities identified by the WCCPCs as guided by county climate change fund regulations and acts.

Priority actions should also specify how they address the needs and priorities of women, youth, ethnic minorities, people living with disabilities and other marginalised and vulnerable groups.

The team can borrow from NCCAP 2018 -2022 and adapt the format to their needs

CHAPTER FOUR: DELIVERY MECHANISMS FOR CCAP

4.1 Enabling Factors

A CCIS Conditional Grant will be provided to County Government of West Pokot to finance the strengthening of CGs' climate risk management capacity, which included the establishment of CCCUs and CCCFs, and adoption of supporting legislation in the County; development and implementation of community education and awareness raising programs; enhancement of the capacity of CCCUs and County Assemblies for supporting local participatory climate action prioritization and implementing locally-led resilience actions/projects and monitoring and reporting on county level climate finance and actions; development of climate information services and early warning systems to communities and other local stakeholders; and establishment of M&E systems for climate resilience actions and climate finance in West Pokot County. Through participatory budgeting frameworks citizens from either Village or Ward level directly decide and prioritize projects to be funded from funds allocated to their locality with inclusion of marginalized and vulnerable groups.

Low-emission climate resilience actions/projects will be financed through a CCRI Conditional Grant to CGs following a facilitated participatory (PCRA) process. The process began with science-based participatory climate risk assessments of 20 Wards within West Pokot County that identify, estimate, map, and rate climate change risks and other hazards. Based on the assessments, communities' own knowledge, and risk management strategies, communities' members prioritize local climate actions/projects with facilitation and technical support of CCCU and CG sectoral departments. The CCCUs leveraged existing county participation, consultation, and planning processes in designing and rolling out climate resilience actions.

4.1.1 Enabling Policy and Regulation

West Pokot County has the following Climate Change legal frameworks;

- a) West Pokot County Climate Change Policy Sessional Paper No.2 December 2020
- b) West Pokot County Climate Change Financing Policy Sessional Paper No.3 February, 2021
- c) West Pokot County Climate Change Fund Act 2021
- d) West Pokot County Climate Change Fund Regulations 2022

These Policies aims enhance County Citizens resilience and adaptation to climate change hazards and related impacts through affirmative financing of climate change actions from own county annual development budget, and through international, Continental, National, Regional, Commercial Entities, NGOs, Faith Based organizations, Private Entities, with agenda of addressing climate change.

4.1.2 Mainstreaming in the CIDP

The CIDP 2023-27 plan development process involved mainstreaming climate change across all the county sector in their development planning processes which effectively integrated climate adaptation and resilience actions into budgeting and financing, implementation and monitoring.

4.1.3 Multi-stakeholder participation processes

The CCCU will leverage existing county participation, consultation, and planning processes in designing and rolling out climate resilience actions. The participatory climate risk assessment and action planning processes will interface with the existing participatory planning processes at the ward and county levels, implemented on an annual basis by county planning and budgeting units. That is, the list of local climate actions in the Ward Climate Action Plan will provide the basis for communities to propose priority investments as part of the participatory planning process. Wards will receive a dedicated allocation from the CCCF each year, investments for which will be proposed and agreed at the annual Ward-level Community Planning Forum, an existing county planning institution. These proposals will subsequently be consolidated at the existing sub-county and county planning fora.

4.1.4 Finance - County Climate Change Fund

Wards will receive a dedicated allocation from the CCCF each year, investments for which will be proposed and agreed at the annual Ward-level Community Planning Forum, an existing county planning institution. These proposals will subsequently be consolidated at the existing sub-county and county planning fora.

4.1.5 Governance - County Government Structures

Article 185 of the Constitution 2010 states that the County Government shall consist of a County Assembly and a County Executive. The roles of these institutions are critical to the implementation of this plan. The organizational structure for West Pokot county government is shown below;

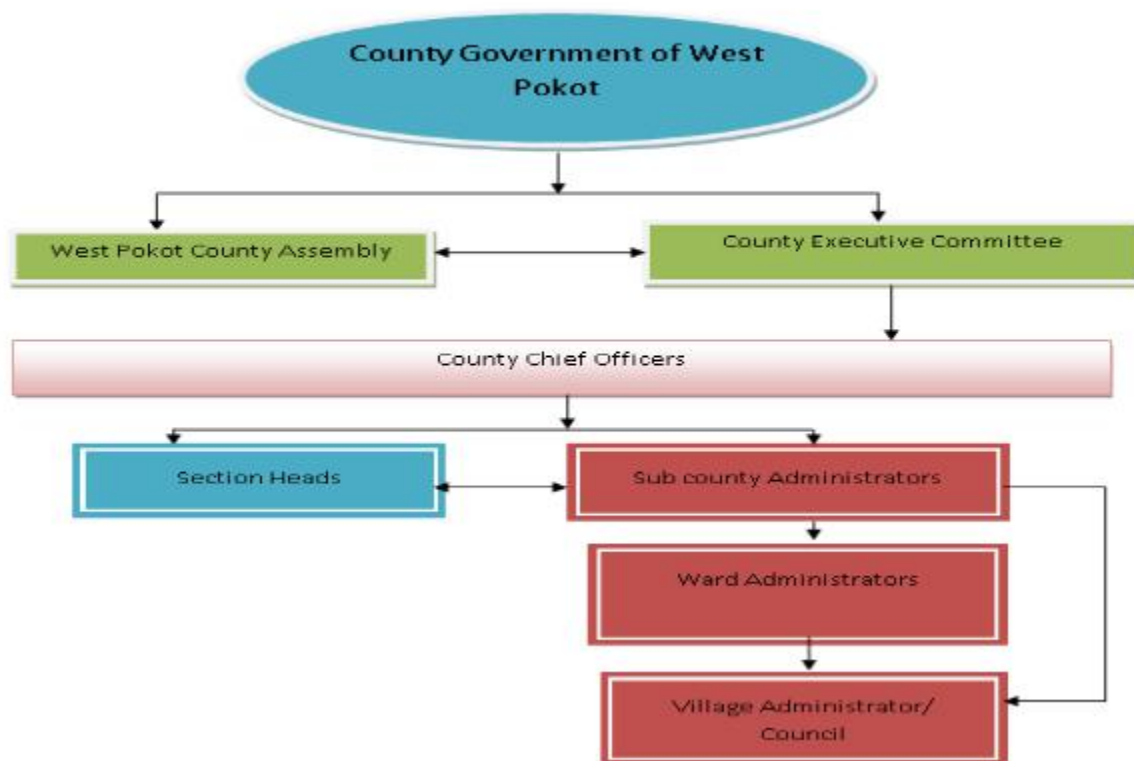


Figure 5 County Government Structures

4.1.5.1 The County Executive Committee

The County Executive Committee has been established vide Article 176 (1) of the Constitution 2010. The County Executive comprise of the Governor and the County Executive Members, will be providing a lead role in shaping the strategies and policies to be implemented in a yearly basis.

The County government has the following ten executive offices; Education and Technical Training; Agriculture, Irrigation and Pastoral Economy; Finance and Economic Planning; Public Service, ICT & Decentralized Units; Water, Environment and Natural resources; Youths, Sports, Tourism, Gender and Social Services; Trade, Industrialization, Investments & Cooperative Development; Health, Sanitation and Emergency Services; Roads, Public Works, Transport and Infrastructure; and Lands, Housing, Physical Planning and Urban Development. In summary, the County Executive role in the Plan implementation will be to;

1. provide leadership in the county's development agenda in setting the overall goal, mission and vision of the County;

2. Facilitate the coordination and alignment of integrated development plan with other county plans, strategies and programmes of national and county governments;
3. monitor the process of planning, formulation, adoption and review of the integrated development plan by relevant county units;
4. facilitate approval of the county plan and submit it to the county assembly for approval;
5. supervise the implementation, administration and delivery of services in the county and all decentralized units and agencies in the county as per the dictates of the plan;
6. submit to the county assembly an annual report on the implementation status of the county plan;
7. Take appropriate steps to resolve any disputes or differences in connection with the planning, formulation, adoption or review of an integrated development plan.

4.1.5.2 The County Assembly

In line with the Constitution and the County Government Act, the County Assembly will be responsible for approval of the Plan, monitoring its implementation and funding through its oversight role to the County Executive as well as approving the county budget/expenditures. The County Assembly also has a role in approving the borrowing and overall debt management that is supposed to finance any budget deficit for development programmes. Therefore, this organ is crucial in ensuring that the executive is effective and resources are used efficiently.

4.1.5.3 Chief Officers

Chief Officers have delegated authority from county treasury as accounting officers. They are responsible for preparing plans for their respective entities as well as preparing estimates of expenditure of the entity in conformity with the plans. They are also in charge of implementation of the same plans.

4.1.5.4 County Budget and Economic Forum

This forum acts as a think tank for economic and budget policy formulation. It is comprised of the County Executive committee and other professionals from the community. It shall provide means for the:

- a) Preparation of county plans, the County Fiscal Strategy Paper and the Budget Review and Outlook Paper for the county; and
- b) Matters relating to budgeting, the economy and financial management at the county level.

4.1.5.5 Civil society

These are civilian pressure groups that ensure that public funds are utilized in an efficient and effective manner. They also act as a watchdog during the implementation process thus ensuring that projects and programs are implemented in the right place and at the right time. Civil society will also play an important role in the Plan implementation through capacity building the community members to understand their rights through civic education program.

4.1.5.6 Decentralized units

The administration of the county government has been decentralized to cover the following areas: Kapenguria-Makutano municipality, Sub-counties; Wards and Villages. Each of the decentralized unit shall be headed by an administrator. The sub county administrator shall be responsible for the coordination, management and supervision of the general administrative functions of the sub county including preparation of development plans and monitoring its implementation. The Town administrator and ward administrators and village administrators shall carry out the same functions at town, ward and village levels. The village will be the lowest level of decentralizing the county activities. Each village will establish a village council which will coordinating the participation of the respective village in governance of the county, monitor implementation of policies at village level and advising the ward as well as sub county administrator in matters relating to that village. To facilitate decentralization, democracy and good governance in the county, the following sub-structures have been put in place to ensure popular participation in the development and county governance processes. The table below provides detailed information on the sub structures

4.1.6 Governance - Climate Change Planning Committees

There is an established Ward Climate Change Planning Committee (WCCPC) in each 20 Wards of West Pokot County Comprising of 13 members representing the diverse interests in the community, namely—

- (a) one male elder;
- (b) one female elder;
- (c) one youth;
- (d) one person living with disability;
- (e) one representative from Agriculture, livestock and Public health;
- (f) Sub county Environment and Natural resources officer who shall be secretary;
- (g) Ward Manager;
- (h) one person representing Community-Based Organizations in the Ward and actively engaged in climate change response activities who shall be nominated by an umbrella organization representing the largest number of such organizations in the Ward;
- (i) the Ward Administrator who shall be the chairperson and an ex-officio member with no voting rights; and
- (j) The chief or Assistant Chief shall serve as ex officio members.

The functions of the Ward Climate Change Planning Committee shall be:

- To coordinate and mobilize communities and other stakeholders in the ward to design and implement climate change response activities;
- To facilitate research and knowledge management at the ward level on climate change, its impacts and strategies for responding thereto;
- Facilitate public education, awareness creation, and capacity building at the ward level on climate change, its impacts and strategies for responding thereto;
- To coordinate, facilitate and manage community consultations on priority climate change response activities;
- Participate in county planning and budgeting processes with a view to ensuring the mainstreaming of climate change and prioritization of climate change response in county development plans;
- Facilitate public participation in climate change governance, implementation of agreed climate change response activities, and monitoring of those activities;
- Coordinate and facilitate provision of technical support to communities in the ward in developing proposals on climate change response projects for funding by the County Climate Change Fund; and
- Oversee implementation of climate change response projects funded by the County Climate Change Fund and report thereon to the technical Committee perform any other functions that may be assigned to it by the technical Committee

4.1.7 Climate Information Services & Climate Data Access

Climate Information Services goes a long way in enhancing adaptive capacities of vulnerable communities against climate risks and impacts, by timely, effectively and accessible early warnings, alerts and development of sectoral co-advisories during Participatory Scenario Planning Process. Meteorological products and Co-advisories provides climate actions and options to be undertaken during climate variability and change (weather extremes). These Co-advisories and climate services shall

enhance their coping strategies and provides relevant options to be undertaken during specific periods of extremes.

The NCCAP equally recognizes the vital importance of climate information services (CIS) to reduce vulnerability to disasters by using climate risk information in development planning and policy making; taking into consideration that more than 70 per cent of natural disasters in Kenya are related to extreme climate events. The table below illustrates our services and data usage.

Climate information	sectoral information and advisories
1. County downscaled extreme weather warnings and alerts	Exposure and vulnerability of crops and human beings to climatic weather hazards coping, interventions and response measures to the impact hazards
2. County downscaled daily and weekly Weather forecasts	Agronomical practices and advisories to support farmers: enhance sustainable water management (harvesting, usage and irrigation), management of crops under prevailing weather, appropriate fertilizer applications and chemical applications, soil quality management, plant population, planting and harvesting dates.
3. County monthly weather forecasts	Agronomical practices and advisories to support farmers: enhance sustainable water management (harvesting, usage and irrigation), management of crops under prevailing weather, appropriate fertilizer and chemical applications, soil quality management, plant population, planting and harvesting dates; Crop produce prices and markets
4. County downscaled Seasonal weather forecasts	Post-harvest management; Agro processing and market development and social inclusion; use of appropriate technologies and innovation; Consumption patterns, needs; Standards and safety; Production projections; Access (transport infrastructure) to produce, markets and prices; Agronomical practices and advisories to support farmers: enhance water usage and irrigation, management of crops under prevailing weather, better fertilizer and chemical applications, soil quality management, plant population, planting and harvesting dates
5. County agro-climatological statistics and summaries (met. Data).	Post-harvest management; Agro processing and market development; credit /insurance and social inclusion; use of appropriate technologies and innovation; Integrated pests and disease management. Research and development.

4.1.8 Dissemination of Climate and Sectoral Co-advisories

Timely disseminations of climate services and advisories will improve decision making at all levels. Also understanding the targeted audience will provide a systematic approach on what language to be used. Social media will assist youth and the technical officers to assist in the uptake and dissemination at all levels. Communities living in the rural areas shall get this information from public baraza's, radio programs, agricultural fields days, trade and exhibitions shows, churches among others to best language suited to them.

4.1.9 Resilience Planning Tools

The many existing management effectiveness tools and assessments that address climate change directly or indirectly by fostering management and best practices in climate change adaption strategies are: The many existing management effectiveness tools and assessments that address climate change directly or indirectly by fostering management and best practices in climate change adaption strategies are:

- Protected Area Management Effectiveness Tracking Tool (METT)
- Integrated Management Effectiveness Tool (IMET)
- MPA Resilience Self Assessment Tool
- The Climate Change Resilience and Adaptation Planning Tool
- Rapid Assessment and Prioritisation of Protected Area Management (RAPPAM) methodology
- CRiSTAL Food Security Tool
- Gather data to inform assessment and planning
- Develop a strategy to build local resilience
- Facilitate a resilience planning workshop

4.1.10 Measurement, Reporting and Verification

The County CCU will be responsible for monitoring, evaluation and learning process CCAP with support of M&E staff at the unit. The CCU oversees all M&E activities, provides technical direction and support, and ensures accurate reporting of results for CCAP adaptation and building resilience actions. The structures consist of CCU, WCCP who will oversee implementation of adaption actions. The M&E reports will be produced on quarterly basis. The reports will provide progress on climate resilience actions at ward levels.

4.2 Institutional Roles and Responsibilities.

4.2.1 Implementation and Coordination Mechanisms

A multi-sectoral PSC and an Inter-agency Technical Advisory Committee (ITAC) have oversight and advisory functions, respectively, while the day-to-day management and coordination of the program is carried out by a Program Implementation Unit (PIU) based in the TNT&P Climate Finance and Green Economy Unit. The PIU is supported by the CCD, CoG, and Ministry of Devolution and ASAL (MoDA), especially in for the coordination and capacity building activities, as mandated by law.

4.2.2 Directorate of Climate Change

There is an established West Pokot County Climate Change Unit under the County Government of West Pokot whose officers comprise of:

- The Chief Officer in charge of Environment and Natural Resources (Climate Change Affairs) who shall be the chairperson
- The Director in charge of Climate change who shall be the fund administrator;
- The Director of Environment and Natural Resources in charge of climate change matters.
- Planning, Monitoring and Evaluation Officer.
- Procurement Officer.
- The Accountant.
- Redeployed officers to serve in the unit.

The functions and responsibilities of Climate change unit include;

- Implement the decisions of the County Climate Change Coordination Committee;
- Set county-specific targets for climate change actions
- Mainstream climate change in CIDPs;
- Mainstream Disaster Risk Reduction in development projects and spatial plans;
- Advise departments and the county assembly on legislative and policy measures necessary for climate change response and attaining low carbon development pathway;
- Develop public education and awareness strategy;
- Identify research and training needs and methods to disseminate climate Change information;
- Establish and manage a climate change registry of actions by sectors, Civil Society Organizations and private sector;
- Identify low carbon development strategies and coordinate related measurement, reporting and verification;
- Coordinate with sub county and ward administrators to ensure impact at the grass root level;
- Establish knowledge management centers and on climate change at ward level;
- Build the inter-county platform, for strengthening policy dialogue on shared resources;

- Identify training and awareness needs related to climate change;
- Establish communication and information dissemination channels on climate change;
- Do screening of all projects at Projects identification stage using exclusion checklist to Assess Possible Adverse Environmental and Social Impacts;
- Stakeholder mapping and consultations on social impacts, mitigation measures and awareness raising by the grievance focal point at investment and county level.
- Preparation of the Environmental Social Impact Assessment /Environmental Social Management Plan or Abbreviated Resettlement Action / Resettlement Action Plan as necessary.
- Undertake Initial and Annual environmental Audit of all Projects with the assistance of National Environment Management Authority.
- Continuous Stakeholder Engagement and logging and Resolution of all Grievances.
- Monitor Implementation of Environmental and Social Management Plan /Abbreviated Resettlement Action Plan and other Social issue.
- Prepare Environmental and Social Management Plan / Resettlement Action Plan /Grievance redress Completion report.

4.2.3 County Climate Change Planning Committee

A County Climate Change Coordination Committee, composed of representatives of sectoral departments (such as agriculture, water, and environment), coordinates all climate change-related issues at the county level with community representatives drawn from the Ward Climate Change Committees.

4.1 Implementation Matrix

Implementation Matrix of West Pokot County Climate Change Action.														
Objective: To enhance adaptive capacity and resilience to climate change, and promote low carbon development pathway.														
Outcome: Enhanced adaptive and resilience to climate change impacts and increased low carbon development pathway														
Sub Progra mme (SP)	Key Output	Key Performance Indicators	Linkage s to SDG Targets*	Planned Targets and Indicative Budget										Total Budg et (Ksh. M)*
				Year 1		Year 2		Year 3		Year 4		Year 5		
				Targ et	Cos t	Targ et	Co st	Targ et	Co st	Targ et	Co st	Targe t	Co st	
Climate Change manage ment	Sensitization on climate change conducted (climate change committees, executives, stakeholders and communities)	No of sensitization held	SDG 13.3, 13.b	500	1.0	400	0.9	300	0.8	200	0.7	100	0.6	4.0
	Early warning data system established	No. Automatic Weather stations established	SDG 13.3	5	25.0	4	20.0	3	15.0	2	10.0	1	5.0	75
	Climate change Information Services Plan prepared	No. of County Climate change Information services Plan prepared	SDG 13.2	1	1.2	0	0	0	0	0	0	0	0	1.2
Water Sector														
	Purchase and Distribution of Water Tanks to Vulnerable Households in the county	No. of water tanks purchased and distributed		100	3	100	3	100	3	100	3	100	3	15
	Construct of Sub-surface dams	No. of Sub-surface dams constructed	SDG 6.1	10	10	10	10	10	10	10	10	10	10	50

	Construction of gravity water to vulnerable households	No. of piped gravity water constructed	SDG 6.1	22	110	22	110	22	110	22	110	22	110	550
	Construction of Sand Dams in Chronically water Scarce parts of the county	No of Sand Dams constructed in Chronically water Scarce parts of the county	SDG 6.1	18	18	18	18	18	18	18	18	18	18	90
	Boreholes drilled and equipped	Number of boreholes drilled and equipped	SDG 6.1	20	80	20	80	20	80	20	80	20	80	400
	Installation of Flood Monitoring and Warning System in flood prone areas/Rivers	No. of installed Flood Monitoring equipments and Warning System in flood prone areas/Rivers	SDG 6.1	6	4									4
Protection and Conservation of Water Springs	Fencing, Water Intake Piping, Planting bamboo and other water friendly plants planted	No. of Water springs protected and no. of bamboo and other water friendly trees planted	SDG 6.1	200	1000	200	1000	200	1000	200	1000	200	1000	500
Forestry														
	Purchase and Distribution of Tree Seedlings to farmers	No of tree seedlings	SDG 3 &12	1.8	9	1.8	9	1.8	9	1.8	9	1.8	9	45
	Planting of Ornamental Trees around public facilities	Planting of Ornamental Trees around public facilities /Institutions		400	1	400	1	400	1	400	1	400	1	5

[illegible]

	schemes													
	Promotion and installation of drip irrigation pipes to vulnerable households	No. of drip irrigation pipes purchased and installed	SDG 15.1	100	50	100	50	100	50	100	50	100	50	250
Disaster Reduction														
	Install of Netatmo Weather Stations in County Climate Change Unit Office, Governor's Office, and County Ward Offices and big institutions in the county	No. of Natemo Weather Stations Installed	SDG 15.1	5	25	0	0	0	0	0	0	0	0	25
	Construction of Weather station infrastructure at sub-county level	No. of infrastructure constructed at sub-county level		5	25	0	0	0	0	0	0	0	0	25
	Installation of Lightning arresters in 10 hotspot areas in the county	No. of lightning arresters installed and operational		10	1.4	10	1.4	10	1.4	10	1.4	10	1.4	7
Environment														
	Installation energy saving and high	No. of installed energy saving and high efficiency		4000	24	4000	24	4000	24	4000	24	4000	24	120

[illegible]

ANNEXES

Annex 1: West Pokot County Climate Change Action Plan Team

	Name	Designation
1.	Hon. Lucky J. Litole	CECM -climate Change
2.	Hon. Leonard Kamsait	CO-Climate Change
3.	Mr. Kennedy Pkew	County Director Climate Change
4.	Mr. Isaac Ritakou	Director Economic Planning & Budget
5.	Mr. Raphael Magal	Ass. Director Environment
6.	Mr. Wilson Lonyangole	County Director of Meteorological Department
7.	Mr. Cliff Barkacth	County Director -NEMA
8.	Mr. Joseph Lolemtum	SIKOM
9.	Mr. Pascalia Kaguara	Assistant Director NDMA
10.	Mr. Daniel Pkiyeney	CCU Accountant
11.	Ms. Rufina Chelimo	CCU Procurement Officer
12.	Mr. Julius Kiriam	Pokot North Sub-county Admin
13.	Mr. Nicholas Mukeyara	Pokot South Sub-county Admin
14.	Mr. Daniel Akudoki	Kacheliba Sub-county Admin
15.	Mr. Joseph Longorok	West Pokot Sub-county Admin
16.	Mr. Wilson Chemngoris	Kipkomo Sub-county Admin
17.	Ms. Christine Kalikamur	Pokot Central Sub-county Admin
19	Mr. Hamiltone Bett	GIS Officer
20	Mr. Geoffrey Wafula	GIS Officer

21	Ms. Egline Rotich	GIS Officer
22	Ms. Getrude Longolol	Administrative Secretary
23	Ms. Faith Cherop	Administrative Secretary
24	Ms. Roseline Omusugu	Administrative Secretary
25	Mr. Denis Kokita	Driver
26	Mr. Tarcisio Loshalima	Driver-CCU
27	Mr. Philip Plimo	Driver-Econ Planning
28	Ward Climate Change Planning Committees	Twenty (20) Wards

ANNEX 2: WARD LEVEL PROJECTS PRORITIZED BY WARD CLIMATE CHANGE PLANNING COMMITTEE

1. ALALE WARD PROJECT PRIORITIZATION

WATER PROJECTS

S/NO	SUB-LOCATIONS	BOREHOLES	WATER PANS	SUB-SURFACE DAMS	PIPED WATER	PROTECTION OF WATER SPRINGS	ROOF CATCHMENT
1	AMAKURIAT	<ul style="list-style-type: none"> Amakuriat centre Otuko village Chemulunjo 	<ul style="list-style-type: none"> Nagwalangaber kosipiri 	<ul style="list-style-type: none"> Kamerikot kosipiri 	-	-	<ul style="list-style-type: none"> Alale primary Otuko primary
2	ALALE	<ul style="list-style-type: none"> Karorok centre Kaat village Kitati centre 	<ul style="list-style-type: none"> Odong Kameris 	Chepowal	<ul style="list-style-type: none"> Odong Kameris 	-	<ul style="list-style-type: none"> Kituti primary Karorok primary Odong primary
3	KAMUNAI	<ul style="list-style-type: none"> Oron primary Oron centre Chepsepin primary 	Nagoledukai	Nagoledukai	Kapichokoo	kapichokoo	<ul style="list-style-type: none"> Oron primary Chepsepin primary
4	KASITOTO	<ul style="list-style-type: none"> Kasitoto centre Nauma centre Kaptuken centre 	Kasitoto dam	-	-	-	<ul style="list-style-type: none"> Kasitoto primary Natapong primary
5	NARUORA	<ul style="list-style-type: none"> Naruora centre Aleng village 	-	Okilim	-okilim	-	<ul style="list-style-type: none"> Naruora primary Napis primary Alang primary
6	SASAK	<ul style="list-style-type: none"> Nakwoilap centre 	<ul style="list-style-type: none"> Kwekwarch 	<ul style="list-style-type: none"> Losakam 	-	-	<ul style="list-style-type: none"> Nakwailaip primary

		<ul style="list-style-type: none"> • Kotira village • Lobiroi village • Kpmot centre • Kishaumol village • Woyakol primary 	<ul style="list-style-type: none"> • Losakam 	<ul style="list-style-type: none"> • Kwekwarch 			<ul style="list-style-type: none"> • Sasak primary • Kaatich primary
7	KAKWES	<ul style="list-style-type: none"> • Koruruk centre • Kokwenya • Kaatich • Nasuret 	-	<ul style="list-style-type: none"> • Chelakatet • Karachomin • Kalokol 	-	-	<ul style="list-style-type: none"> • Kaatich primary • Sasak primar
8	LOKITONYALA	<ul style="list-style-type: none"> • Kaakou village • Lokodoso village • Lokitalarengan • Ditee centre • Arura village • Chepkanin 	Lemkol	<ul style="list-style-type: none"> • Kopollet • Akiriamet • Lonyakuno • Amerikibobo 	-	-	<ul style="list-style-type: none"> • Kakou primary • Nasol secondary • Kokitalareng ECDE
9	NAUYAPONG	<ul style="list-style-type: none"> • Nauyapong primary • Lomodita village • Kabluewas village 	-	<ul style="list-style-type: none"> • Kaburukoru • Ayapie • Amwanitau • Lomodita • Apeipuke 	-	-	<ul style="list-style-type: none"> • Nauyapong primary
10	KALAPATA	Kariamukoghn	-	<ul style="list-style-type: none"> • Kosakwii • Katagwan • Kaamedei 	<ul style="list-style-type: none"> • From kochomil – Chepkingh centre 	-	Kalapata primary
11	MEKUYE	<ul style="list-style-type: none"> • Kurer • Mekuye centre 	-	<ul style="list-style-type: none"> • Chepokitaran • Lodwar 	-	-	<ul style="list-style-type: none"> • Tuyunwe • Kurer
12	LOTUKUM	<ul style="list-style-type: none"> • Lotukum • Kagwoitom • Kapelilok 	-	Kabekakogh	-	-	-
13	AKORET	<ul style="list-style-type: none"> • Akoret • Chesapul • Lowaspel primary • Chesasal 	-	<ul style="list-style-type: none"> • Kamera • Cheprimben 	-	-	Lowazpei primary
14	KODII	<ul style="list-style-type: none"> • Kodii village • Chemas 	-	Rotion	-	-	-
15	KOLA	<ul style="list-style-type: none"> • Logwatale • Kola village • Adorin 	-	Kodaa	-	-	Adorin primary
16	MUNYAN	<ul style="list-style-type: none"> • Munyan village • Chepadii 	-	<ul style="list-style-type: none"> • Loitangiri • Cheptuwo 	-	-	-
17	LORUSUK	<ul style="list-style-type: none"> • Kapyemut village • Katopoton village • Prumpuru primary 	-	-	-	-	-

		• Natiriri primary					
18	KOPITO	• Lopotio • Kopito	-	Lopotio	-	-	-
19	APUKE	• Locheimon primary • Apuke • merukuma	-	locheimon	-	-	Locheimojn primary

AGRICULTURE AND LIVESTOCK PROJECTS

S/NO	SUB-LOCATION	HYBRID SEEDS	LIVESTOCK BREEDS	KITCHEN GARDEN	PEST DISEASES AND	VACCINATION	CATTLE CRUSH	IRRIGATION
1	AMAKURIAT	• H614 • H6213 • H520 • H516	• Sahiwal • Galla goats • Doper • Improved chicken	• Lopepon • Alale primary	• Fall army • African worm • cut worm	• ppr • East cost fever • Lomoloko • Foot rot • Bliss	Kodokolei	
2	ALALE	• H614 • H6213 • H520 • H516	• Sahiwal • Galla goats • Doper Improved chicken	Along alale rive	• Fall army • African worm cut worm	• ppr • East cost fever • Lomoloko • Foot rot Bliss	Karorok	Alale
3	KAMUNAI	• H513 • H520 • PH4 • DH04	• Sahiwal • Galla goats • Doper Improved chicken	-	• Fall army • African worm cut worm	• ppr • East cost fever • Lomoloko • Foot rot Bliss	• Kaptunatai • Chepsepin	
4	NARUORA	-	• Sahiwal • Galla goats • Doper Improved chicken	Naruora primary	• Fall army • African worm cut worm	• ppr • East cost fever • Lomoloko • Foot rot Bliss	• Okilim • Napis	
5	KASITOT	• H513 • H520 • PH4 • DH04	• Sahiwal • Galla goats • Doper Improved chicken	-	• Fall army • African worm cut worm	• ppr • East cost fever • Lomoloko • Foot rot Bliss	Nauma	
6	SASAK	• H614 • H6213 • H520 • H516 • H624	• Sahiwal • Galla goats • Doper Improved chicken	Loimamosing	• Fall army • African worm cut worm	• ppr • East cost fever • Lomoloko • Foot rot Bliss	• Kipomot • Kotira	-
7	KAKWES	• H614 • H6213	• Sahiwal • Galla goats	• Kalachomini • Kaatich	• Fall army • African worm	• ppr • East cost fever	• Kaatich • Lobitoi	-

		<ul style="list-style-type: none"> • H520 • H516 	<ul style="list-style-type: none"> • Doper • Improved chicken 	<ul style="list-style-type: none"> • primary • Lobiroi 	<ul style="list-style-type: none"> • worm • cut worm 	<ul style="list-style-type: none"> • Lomoloko • Foot rot • Bliss 		
8	LOKITONYALA	<ul style="list-style-type: none"> • H614 • H6213 • H520 • H516 	<ul style="list-style-type: none"> • Sahiwal • Galla goats • Doper • Improved chicken 	Muniatukumo	<ul style="list-style-type: none"> • Fall army • African army • worm • cut worm 	<ul style="list-style-type: none"> • ppr • East cost fever • Lomoloko • Foot rot • Bliss 	<ul style="list-style-type: none"> • Chepkarin • Lokodoso 	-
9	NAUYAPONG	<ul style="list-style-type: none"> • H614 • H520 • H516 • PH4 	<ul style="list-style-type: none"> • Sahiwal • Galla goats • Doper • Improved chicken 	Nauyapong primary	<ul style="list-style-type: none"> • Fall army • African army • worm • cut worm 	<ul style="list-style-type: none"> • ppr • East cost fever • Lomoloko • Foot rot • Bliss 	<ul style="list-style-type: none"> • Kabluewos • naut 	-
10	KALAPATA	<ul style="list-style-type: none"> • H614 • H629 • H628 • H614 	<ul style="list-style-type: none"> • Sahiwal • Galla goats • Doper • Improved chicken 	<ul style="list-style-type: none"> • Embomogh • Embekr • Chepkinai • Chemoroi 	<ul style="list-style-type: none"> • Fall army • African army • worm • cut worm 	<ul style="list-style-type: none"> • ppr • East cost fever • Lomoloko • Foot rot • Bliss 	<ul style="list-style-type: none"> • Lopaturn • Lokorodoo • Kariakogh 	-
11	MEKUYOI	<ul style="list-style-type: none"> • H520 • H513 • H516 	<ul style="list-style-type: none"> • Sahiwal • Galla goats • Doper • Improved chicken 	-	<ul style="list-style-type: none"> • Fall army • African army • worm • cut worm 	<ul style="list-style-type: none"> • ppr • East cost fever • Lomoloko • Foot rot • Bliss 	<ul style="list-style-type: none"> • Tuyuno • Logwarel 	-
12	LOTUKUM	<ul style="list-style-type: none"> • DH04 • PH4 • H513 • H516 	<ul style="list-style-type: none"> • Sahiwal • Galla goats • Doper • Improved chicken 	-	<ul style="list-style-type: none"> • Fall army • African army • worm • cut worm 	<ul style="list-style-type: none"> • ppr • East cost fever • Lomoloko • Foot rot • Bliss 	<ul style="list-style-type: none"> • Kurer • Amojos 	-
13	AKORET	<ul style="list-style-type: none"> • H513 • H516 • DH04 • PH4 	<ul style="list-style-type: none"> • Sahiwal • Galla goats • Doper • Improved chicken 	-	<ul style="list-style-type: none"> • Fall army • African army • worm • cut worm 	<ul style="list-style-type: none"> • ppr • East cost fever • Lomoloko • Foot rot • Bliss 	<ul style="list-style-type: none"> • Lowasipai • Kamera 	-
14	KOLA	<ul style="list-style-type: none"> • DH04 • H513 • H516 • H520 	<ul style="list-style-type: none"> • Sahiwal • Galla goats • Doper • Improved chicken 	Lopetareng	<ul style="list-style-type: none"> • Fall army • African army • worm • cut worm 	<ul style="list-style-type: none"> • ppr • East cost fever • Lomoloko • Foot rot • Bliss 	<ul style="list-style-type: none"> • Adorine • Logwatale 	-

ENVIRONMENT AND FORESTRY PROJECTS

S/NO	SUB-LOCATION	TREE-NURSERY	PLANTING OF TREES	CONSTRUCTION OF GABBIONS	PROTECTION OF FOREST/WATER CATCHMENT AREAS
1	AMAKURIAT	<ul style="list-style-type: none"> Alale primary Lolepon Chemulunjo St. comboni 	<ul style="list-style-type: none"> Alale primary Along lolepon river 	<ul style="list-style-type: none"> Nangwalang' aberu Sankakai Otuko 	<ul style="list-style-type: none"> Chemulunjo Muriokopoy Kodokolei
2	ALALE	<ul style="list-style-type: none"> Kituti primary Kariangole Alale mix Odong primary 	<ul style="list-style-type: none"> Kituti primary Karorok primary Alale mixed day school Odong primary 	<ul style="list-style-type: none"> Alale mixed day secondary school Kariamangole 	<ul style="list-style-type: none"> Karianangole Odong river Nabelet river Alale mixed day school
3	NARUORO	<ul style="list-style-type: none"> Naruara primary River naruario Okilim Kameris primary 	<ul style="list-style-type: none"> Naruara primary Kameris primary Alale girls secondary 	<ul style="list-style-type: none"> Kameris primary Napis primary 	<ul style="list-style-type: none"> Naruara primary Kameris Alale girls secondary school
4	KAMUNAI	<ul style="list-style-type: none"> Oron primary Chepsepin primary 	<ul style="list-style-type: none"> Oron primary Chepsepin 	-	<ul style="list-style-type: none"> Oron primary school Chesepin primary school
5	KASITOT	<ul style="list-style-type: none"> Kasitot primary Natapar Nauma 	<ul style="list-style-type: none"> Kasitot Nauma Natapar Kalipachom 	-	-
6	SASAK	<ul style="list-style-type: none"> Kariamarii Kamarecho Sasak primary 	<ul style="list-style-type: none"> Naberol Nagwalap Sasak 	<ul style="list-style-type: none"> Atumtok Kariamawoi 	-
7	KAKWES	<ul style="list-style-type: none"> Karachomin Kaatich centre Kaatich primary 	<ul style="list-style-type: none"> Kaaticho Kakwes Kapeliesa 	<ul style="list-style-type: none"> Karachomin Kaatich 	Arumaa
8	LOKITONYALA	<ul style="list-style-type: none"> Lokitonyal river Lemkol Lomuriatukum borehole 	<ul style="list-style-type: none"> Lokitonyala Lokitalareng Apeikidori Kaakou 	<ul style="list-style-type: none"> Lemkol Lokitalarengal 	Lokitonyala River
9	NAUYAPONG	<ul style="list-style-type: none"> Nauyapong Nakusee 	<ul style="list-style-type: none"> Nauyapong Kakusee 	-	<ul style="list-style-type: none"> Murulem Lonyang chura
10	KALAPATA	<ul style="list-style-type: none"> Embakarar Chesakur Lopatan Embemogh 	<ul style="list-style-type: none"> Kokwosikrei Kalapat primary Kokwokmada Chepkinagh 	-	-
11	MEKUYE	<ul style="list-style-type: none"> Mekuye Logwarei 	<ul style="list-style-type: none"> Logwaren Mekuye Akoretion 	-	-
12	LOTUKUM	<ul style="list-style-type: none"> Lotum 	<ul style="list-style-type: none"> Nakadeli 	-	-

		<ul style="list-style-type: none"> • Muruese • Loparchich 	<ul style="list-style-type: none"> • Murulem 		
13	AKORET	<ul style="list-style-type: none"> • Akoret • Chesapul • Lowazpel 	<ul style="list-style-type: none"> • Lowazpel • Chesapul 	-	-
14	KODII	<ul style="list-style-type: none"> • Kodii • Chemasa 	<ul style="list-style-type: none"> • Kodii • Chemasa 	Rotio	-
15	KOLA	<ul style="list-style-type: none"> • Logwatale • Kola • Adorin 	<ul style="list-style-type: none"> • Adorin • Kola 	-	-
16	munyan	<ul style="list-style-type: none"> • Munyan • Chepadii 	<ul style="list-style-type: none"> • Muyayam • Chepadii 	-	-
17	LORUSUK	<ul style="list-style-type: none"> • Kapyemut • Prompuu 	<ul style="list-style-type: none"> • Kapyemut • Prompro • Natirira 	-	-
18	KOPITO	<ul style="list-style-type: none"> • Lopotio • Kopito 	<ul style="list-style-type: none"> • Kopito • Lopito 	-	-
19	APUKE	<ul style="list-style-type: none"> • Locheimoi • Apuke 	<ul style="list-style-type: none"> • Apuke • Locheimoi • Merukuma 	-	-

2. BATEI WARD PROJECT PRIORITIZATION 27TH JULY 2023 AT MERCY CENTER

A) WATER PROJECTS

SN	PROJECTS	SUB LOCATION	LOCATION/SITE
	BOREHOLE(solar powered)	SOBUKWO	<ul style="list-style-type: none"> • Kapkepot • Kuyogh • Kadough • Sobukwo • kalopot
		MORPUS	<ul style="list-style-type: none"> • Putokowow • Kakare • Kapchemogen • Kodungdung • Chepkayap • Lotakany • Tuyunwo • Cheponoyon • Kamtungwo • Orolwo
		ORTUM	<ul style="list-style-type: none"> • Kasongol • Ortum center • Morion • liting
		PUSOL	<ul style="list-style-type: none"> • Timorwo • Pusol • Propoi
2	PIPED WATER(gravity)	MURPUS	Porong-kapkaror-murpus-samor-cheptya
		PARUA,SEBIT,ORTUM.	Parua-ortum line
		PARUA	Nyarkulian-purmotor-torokit line
		CHEPOKORIONG	Plekwenda-chepchoi line Kaghot-sesimwo-
		PUSOL	Sina-samich-motokon line
		KERELWA	Sondany-kerelwa
3	WATER PANS	MURPUS	Kapuret Kapsanayan Samor parak
		SOBUKWO	Kalopot Kuyogh
4	SUB SURFACE DAM	MURPUS	Moriokwo Orolwo Lotakany chepelei

AGRICULTURE AND LIVESTOCK PROJECTS

SN	PROJECTS	SUB LOCATION	LOCATION
1	VACCINATION	Entire ward	
2	DOPPER & GALLA GOAT	Sobukwo,murpus,pusol Ortum,chepkoriong,sebit	
3	SAHIWAL,DAIRY COWS	All sublocations	
4	PROVISION OF (maize,mango,citrus,lemon,banana Sugarcane,tomatoes,onions)	All sublocations	
5	PROVISION OF PESTICIDES AND ACCARICIDES	Entire ward	

ENVIROMENT AND FORESTRY PROJECTS

SN	PROJECTS	SUB LOCATION	LOCATION/SITE
1	TREE NURSERIES	PARUA	Ptarkong primary Parua tree nursery Torokit primary Penon primary
		KERELWA	Kerelwa primary Koporoch girls Mlimani primary
		ORTUM	Psiwo primary Tomnyer primary Chipagh primary
		SEBIT	Sebit primary Kochiy primary
		CHEPKORIONG	Chepkoriong Kariamangole
		PUSOL	Tapkuyo Priopoi Kaporo
2	REAFORESTATION & AFFORESTATION	PARUA	Penon forest
		ORTUM & KERELWA	Koporoch Tomnyer
3	PROVISION OF TUBES FOR NURSERY BEEDS	ENTIRE WARD	
4	RIVER BANKS PROTECTION	ALL RIVERS IN THE WARD	Sebit ,chepkoriong, kerelwa, muruny, chipagh, tonyer, soka, kapoghotwo river

5	WATER SOURCE PROTECTION	ORTUM	Mandizini
		SEBIT	cherir
		CHEPKORIONG	Chelopoi Posoitin

3. CHEPARERIA WARD
PROJECT PRIORITIZATION AT CHEPARERIA MERCY CENTER ON 27TH JULY 2023

WATER PRIORITIZATION PROJECTS

SN	PROJECT	SUBLOCATION	LOCATION/SITE
1	BOREHOLES (SOLAR POWERED)	CHEPTYANGWA	-SILOM -TORIAPKOI
		CHEPKOPEGH	-SACHIR -KAPETAKINEI
		KAPCHEMOGEN	-PKINYAT
		KORELACH	-KORELACH PARAK -CHEPTURNGUNY
		CHESRA	--TACHIT -KANARAYON
		PSERUM	-PRIOKWO -KAPSIMATIA -SANGAKA -LOKUKA -SUKAIT
		SHOLPOGH	-KWIRIR -KSENGOGH -LALAT -CHEMOTOUGH -TOYOPO -MISTIRI
2.	DAM	KORELLACH	-KASEGON
		PSERUM	-PRIOKWO -KAPSIMATIA
		CHESRA	-CHESOYOW -AKAP
		CHEPKOPEGH	-PROKUT
		CHEPTIANGWA	-KAPETAKIMEI
		SLA	-PERTOM

		MONGORION	-ARONOI
		PLELAKAN	-PLELAKAN
		KAPCHEMOGON	-REKERET
3.	PIPELINE	CHEPARERIA	-KOSULOL TOWN
		YWALATEKE	-KOPOLONG'A-CHEPKORNISWO
		KAPCHEMOGEN	CHEPTORUK-PROSWO
		CHESRA	NARAMAM-MALMTUCH
		CHEPTAPESHA	-KOPOLUK-SENETWO
		CHEPKOPEGH	-KAPCHEPTARUK- CHEPKOPEGH CENTRE -PONGON-KAPSOKERO PRIMARY
		PSERUM	-TUKUMO CENTRE-APEYET -TUKUMO CENTRE-KAPEMATIA
		SLA	-CHEPARERIA TOWN-SLA PRIMARY

AGRICUTURE AND LIVESTOCK PROJECTS

SN	PROJECT	SUB-LOCATION	SITE
1.	IRRIGATION		
		YWALATEKE	-YWALATEKE -KAPOLONGA
		SENETWO	-CHEPTAPESHA -SENETWO
		PSERUM	-PSERUM -APEYET
		CHEPKOPEGH	-KAMUSARIYA -KAIKAI -CHEPEL
		KAPCHEMOGEN	-CHEPTUYIS -MROMBUS -KALEMNYANG
		CHESRA	- NARAMAM-CHESRA
		KORELLACH	-PRIOKWO
		MONGORION	-MONGORION

2.	TRADITIONAL HIGH VALUE CROPS (DROUGHT RESISTANT CROPS)	ALL SUB-LOCATIONS IN CHEPARERIA WARD	
3.	FRUIT TREES	CHEPARERIA WARD (ALL SUB-LOCATIONS)	
4.	SOIL TESTING	ALL SUB-LOCATIONS IN CHEPARERIA WARD	
5.	POULTRY	ALL SUB-LOCATIONS	
6.	GALLA GOATS SCHEMES	SHALPOGH CHEPKOPEGH SENETWO PSERUM YWALATEKE CHESRA PLELEKAN MONGORION KACHEMOGEN	
7.	PASTURE SEEDS BOMA RHODES NAPPIER GRASS	ALL SUBLOCATIONS	
8.	CRUSHES(METALLIC)	PRIOKOR KANYIKEY PLELEKAN CHEPTIANGWA CHEPKOPEGH TACHIT	
9.	VACCINATION (CATTLE, SHEEP,GOATS,POULTRY)	ALL SUB-LOCATIONS IN CHEPARERIA WARD	
10	PESTICIDES (PLANTS AND LIVESTOCK)	ALL SUB-LOCATIONS IN CHEPARERIA WARD	
11.	PROVISION OF ACARICIDES	YWALATEKE DIP CHEPKORNISWO DIP KASIMOTWO DIP CHEPTURUNGUNY MOKOWON	
12.	REPAIR OF DIPS	CHEPKOPEGH KAIKAI KAPSIMATIA SHALPOGH CHEPARERIA	
13.	DIPS ESTABLISHMENT (PROPOSED)	CHESRA TIRKEN PONGONG	

		TACHIT CHEPTURUNGUNY	
14.	SAHLWAL BULLS FOR BREEDING	ALL SUB-LOCATIONS IN CHEPARERIA WARD	
15.	DOPPER SHEEP FOR BREEDING	ALL SUB-LOCATIONS IN CHEPARERIA WARD	
16.	DAIRY GOATS	ALL SUB-LOCATIONS IN CHEPARERIA WARD	
17.	BEE HIVES -SETTING UP APIARY	ALL SUB-LOCATIONS	
18.	FISH FARMING	UPPER CHEPARERIA	
19.	FARM PONDS (FOR FARMING)	ALL SUBLOCATIONS	
20.	CAMELS	LOWER CHEPARERIA AUB- LOCATION	

ENVIRONMENTAL AND FORESTRY

SN	PROJECT	SUB-LOCATION
1.	EST. OF TREE NURSERIES AND SEED COLLECTION	ALL LOCATIONS IN CHEPARERIA WARD
2.	SUPPLY OF TUBES	ALL LOCATIONS IN CHEPARERIA WARD
3.	SOIL CONSERVATION	ALL LOCATIONS IN CHEPARERIA
4.	PLANTING OF TREES	ALL HOUSEHOLDS AND INSTITUTIONS IN CHEPARERIA WARD
5.	SENSITIZATION OF TARGET GROUPS	ALL SUB-LOCATIONS IN CHEPARERIA WARD
6.	EMPLOY FOREST GUARDS	KAMATIRA
7.	RESTRICT CHARCOAL BURNING	ALL SUB-LOCATIONS IN CHEPARERIA WARD
8.	PROTECTION OF RIVER BANKS	ALL RIVERS IN CHEPARERIA WARD (LYON, CHESRA ,MURUNY, E.T.C)
9.	SUB-SURFACE DAMS	ALL SEASONAL STREAMS IN CHEPARERIA WARD
10.	SAND HARVESTING POLICIES	ALL SUB-LOCATIONS IN CHEPARERIA WARD
11.	RESTRICT STONES COLLECTION AND CRUSHING	ALL SUB-LOCATIONS IN CHEPARERIA WARD
12.	OPENING, MURRUMING AND CULVERTING OF ROADS	ALL SUB-LOCATIONS IN CHEPARERIA WARD
13.	RE-AFFORESTATION AND PROTECTION OF KAMATIRA FOREST	KAMATIRA FOREST

4. ENDUGH WARD PROJECT PRIORITIZATION

WATER PROJECT

S/NO	PROJECT	SUB-LOCATION	SITE
1	PIPED WATER	Kriich	<ul style="list-style-type: none"> Kamoret -Tengar water project.
		Cheptram	<ul style="list-style-type: none"> Empokapkopuch-Momor-Salawa
		Ketiam	<ul style="list-style-type: none"> Chemwagh -Ptoyo Seror -Ptoyo(repair)
		Chewarany	<ul style="list-style-type: none"> Chepruch-Kerong-Reperwo
		cheptam	<ul style="list-style-type: none"> Sarmat-Mosongkaghin-Kapchughugh(repair) Sarmat -Kotit(repair) Sarmat -Elipas
		Tunoyo	<ul style="list-style-type: none"> Soos-Tunoyo
		Rukei	<ul style="list-style-type: none"> Embel -Namoru
		Kesot	<ul style="list-style-type: none"> Cheptram-Kesot(repair)
2	BOREHOLES	Kositoi(solarization)	<ul style="list-style-type: none"> Kachaya Ywapit Kamurio
		Tunoyo	<ul style="list-style-type: none"> Topodou Kakres
		Nakwijit	<ul style="list-style-type: none"> kasau
		Rukei	<ul style="list-style-type: none"> Kasorchon Chemoril
		Merur	<ul style="list-style-type: none"> Korenger Koghimoghentoon
		chewarany	<ul style="list-style-type: none"> sakaat
		Nakwijit	<ul style="list-style-type: none"> Oroon
		Ptoyo	<ul style="list-style-type: none"> Samum
		Chepokachim	<ul style="list-style-type: none"> chemngoyomwo
3	WATER PANS	Kositoi	<ul style="list-style-type: none"> kachaya kamurio
		Tamarukwo	<ul style="list-style-type: none"> Kokwokatagh
		Rukei	<ul style="list-style-type: none"> Rukei
		Merur	<ul style="list-style-type: none"> Merur
		Tunoyo	<ul style="list-style-type: none"> Tunoyo
4	SUB-SURFACE DAMS	Nakwijit	<ul style="list-style-type: none"> Akwanga

		Tunoyo	<ul style="list-style-type: none"> • Artombe • Katuler
		Merur	<ul style="list-style-type: none"> • Merur
		Ptoyo	<ul style="list-style-type: none"> • Embosut

AGRICULTURAL PROJECTS

- Vaccination of goats and sheep against (Losir, Loukoi, Lomolokoo-goat pox) across the ward.
- Vaccination of cattle against FMD (Ngorion), LSD (Lumpy skin disease), Lomolokoo, Loukoi-CCP
- Vaccination of poultry against (Newcastle, Avian gorrzya, Mareks, Fowl pox, Gumboro)
- Deworming of goats, sheep, cattle, poutry.
- Ticks control -provision of ectopeal/pouron
- Construction of cattle dips at; Ptoyo-repair, Nakwijit- construction, Repair Chewarany, Tamarukwo, Klaan, Kudungole, Chepokachim, Merur (Adoketposes), Alokeke (Kositoi), Kokwopotoo(kositoi), Kos
- Distribution of improved livestock – Galla goats, Sahiwal.
- Provision of pasture seeds (Bomarods)
- Provision of certified drought to tolerant sorghum seeds, maize, green grams, ground nuts and cowpeas.
- Provision of bee-hives (modern) to all farmers.
- Sustainable environmental conservation trainings across the ward(women groups and youth groups).
- Provision of mangoes, ovacadoes , oranges,(grafted) to all farmers.
- Improving fish farming at Turkwel dam.
- Provision of short-term crops, millet and onions to all farmers.

EVIRONMENT PROJECTS

- Planting of trees at Maral Hill all round, Mt.Mtelo Forest, Ketiam Forest, Kamkeyon Hill, Choto Hill, Topukwo Hill and institutions.
- Establishment of tree nurseries at Mt. Mtelo (Krich), Cheptram, Ketiam Forest(Chemwagh), Mwomur, Embosoyen, Rorach Hill and Chepruch.
- Land reclamation of gulley erosion at, Kamsarach, Rukei, Kariwo, Kriich gulley erosion, Tunoyo(Kanyalim)

5. KAPCHOK WARD PROJECT PRIORITIZATION AT KODICH UTC ON 25TH JULY, 2023.

WATER PROJECTS

S/NO	PROJECTS	SUB-LOCATION	SITE
1	BOREHOLES	Losam	Lopem
		Kodulem	Kapeta
		Leiyo	Nachakul
		Kapiyen	Raraiten
		Kapitiro	Lokitedel
		Konyao	Chemsukl
		Kopeyon	Aroke
		Kamechwa	Pisaa
2	SUB-SURFACE DAMS	Losam	Mukuri/Tingas
		Kodulem	Siyoyowo
		Kopeyon	Chemnchin pogh
		Napitiro	Chepkanel
		Leiyo	Nachurur
3	WATER PANS	Losam	Kokwolokotetwo
		Konyao	Chepkarlal
		Leiyo	Kapusemon

AGRICULTURE AND LIVESTOCK

S/NO	PROJECTS	SUB-LOCATIONS	SITE
1	VACCINATION	Losam	Losam&Kokwolokotetwo
		Kodulem	Cheptokol
		Leiyo	Kodera
		Kpiyen	Tuwiit
		Kamechwa	Manding
		Kopeyon	Kopeyon
		Konyao	Saleyad
		Napitiro	Napitiro
2	CATTLE CRUSH/AKOSOS	Losam	Mukuri
		Konyao	Bendera
		Kapiyen	Chepkirony
		Kopeyon	Lokasur
		Kamechwa	Akiriamet
		Leiyo	Kodera
		Napitiro	Chemiliot
		Konyao	Kamokongwa

		Kodulem	Kodomuch
3	ANIMAL PASTURE(HAY)	Konyao	Kapksercon
		Losam	Karon
			Akwichanian
4	ANIMAL INTERBREEDING(Galla goats, somali Gamel, paultry,	ALL LOCATIONS	Entire ward

ENVIRONMENT AND FORESTRY

S/NO	PROJECTS	SUB-LOCATIONS	SITE
1	LAND RECLAMATION(GABBIONS)	Napitiro	Chepelon
		Konyao	-saleyard -Lomanisiko -Tomunyo
		Losam	-Nasakam -Amongot
		Kopulem	Cheptokol
2	TREE PLANTING	Leiyo	Kondera primary
		Kodulem	Ngotuk
		Kamechwa	-Kamechwa -Ngoriatukei
		Konyao	-Naremut -Lomasiniko
		Napitiro	Longenya
		Losam	-Amaler -Losam -Kapchok Girls
		Kapeyon	Kukugh
3	BRIDGES	Losam	-Losam River -Arulam
		Kapiyen	Kapiyen River
		Kopeyon	Aroke
		Kamechwa	Mading
		Konyao	Konyao River

KAPCHOK WARD PROJECTS
PRIORITIZATION
VENUE: KODICH UTC 25/7/2022
1. WATER PROJECTS

SNO	PROJECT	SUB-LOCATION	LOCATION/AREA
1.	Boreholes	LOSAM KODULEM LEIHO KAPITEN NAPITIRO KONTAD KOPETON KAMECHNA	LOPEN KAPETA NACHAKUL KARATEN LOKITEBEL CHEMEUK AROKI PISAA
2.	SAND DAMS	LOSAM KODULEM KOPETON NAPITIRO LEIHO	MUKURI / TINHAS SITOTONG CHEMNCHIN PUGH CHEPRANER NACHURVIL
3	WATER PANS	LOSAM KONTAD LEIHO	KOKWOLLOTHU CHEPRALLAL KAPUGERON LOKIDOK

B1

KAPITOK WARD

2) AGRICULTURE & LIVESTOCK

S/NO	PROJECT	SUB LOCATION	LOCATION / AREA
1	Vaccination	Losam Kodulen Leino Kapien Kamechwa Kopeton Konyao Napitio	Losam & Kodulen = Choptoio / Kodera & Tunrit Mading Kopeton Sale yard Napitio
2	CATTLE CRUSH	LOSAM KONIAO KAPIEN KOPETON KAMECHWA LEINO NAPITIO KONIAO KODULEN	MUKUR BENDERA CHEPIKRONY LOKASUN AKIRIAME KODERA CHEMILLOT KAMOKONGWO KODOMULU
3	ANIMAL PASTURE (HAY SEEDS)	KONIAO LOSAM KONYAO	KAPUORON KARON AKWICHANIAN
4	Supply animal feeds	all Sub-locations	
5	ANIMAL BREEDING i.e. Goats, Camels, Cows, Poultry, Dorper sheep	Leino All sub locations Kapien Konyao Losam Napitio Kodulen Kopeton Kamechwa	

Pg 2.

KAPITOK WARD

3) ENVIRONMENT & FORESTRY

S/NO	PROJECT	SUB-LOCATION	LOCATION / AREA
1.	GRAIN CONSUMPTION D-IKES	NAPITIRO - RIVER KONTAO KONTAO LOSAM KOBULEM LOSAM KONTAO	CHEPELOW SALE YARD LOMASINIKO NAPITIAM CHEPELOW AMONHOT TOMUNTO
2.	TREE PLANTING	LEIMO KOBULEM KAMECHWA KONTAO KONTAO KAMECHWA NAPITIRO LOSAM KOPETON	KOBELA PRIMARY NHOTUT KAMECHWA NAREMUT LOMASINIKO AKILAMET KONTAO NAPITIAM LOMASINIKO AMARER LOSAM KONTAO GIRL KUKUKU
3.	BRIDGES	LOSAM KAPITEN KOPETON KAMECHWA LOSAM KONTAO	LOSAM RIVER KAPITEN RIVER AROLE MADING ARULAM KONTAO RIVER (CHAPKAMAL)



INFINIX
AI CAMERA

KAPITOK WARD PROJECT

6. KAPENGURIA WARD PROJECT PRIORITIZATION

WATER PROJECTS

❖ **PIPED WATER:**

All sub-locations in Kapenguria Location, Kapkoris Location, Chemwochoi Location i.e Ngoleyo sub-location and Komol sub-location.

❖ **Spring water:**

Kamatira sub-location, Chepkoneroi, Cheptapesia sub-location (all in Kapenguria location), Mwotot sub-location, Bendera water spring (need solar-Ka Lokwang), cereals bridge water springs, Chewoyet sub-location (Aramaket water spring), Kapkoris Location-Kaprom sub-location, Mintirilwo water project (needs tank), Tokolto (piping), Kapkoris centre B, Simotwo. Chemwochoi sub-location- cheptupoghet spring repair of piping water. Naramam sub-location (lopopore solar installation), Komol sub-location- siwirir spring needs solar installation.

❖ **BOREHOLES:**

Chemwochoi location: *Naramam sub-location*; Kokpech, Kalas, Polet, Embosis Secondary school, Embosis Centre-repair, Embosis Dispensary and primary school, *Chepkochir sub-location*; Chepkochir primary, Putor primary, Kormonot ECDE, Komol *sub-location*; Komol primary, Ngoleyo sub-location; Ngoleyo primary and ECDE, Chemwochoi secondary school.

Kapkoris Location: Kaprom sub-location, Kaprom primary school, Ngin-ngin ECDE, Kapkoris primary, Kapkoris Dispensary, Karas primary.

❖ **WATER PANS:**

Naramam sub-location; Kulwa kpaw, Kalain

AGRICULTURE AND LIVESTOCK PROJECT

- ❖ Provision of fruit trees i.e Ovacado, Bananas, Mangoes, Oranges.
- ❖ Provision of vegetables seeds i.e cabbages seeds (all ward)
- ❖ Provision of hybrid maize, beans, green grams, sorghum, millet (all ward)
- ❖ Provision of soil PH Kits.
- ❖ Provision of dopper sheep breed (entire ward)
- ❖ Provision of galla goats breed (kapkoris and chemwochoi locations)
- ❖ Provision of Togenburg goats breed (kapkoris and chemwochoi locations)
- ❖ Provision of Arshia breed (Kapenguria, kapkoris, Ngoleyo, Komol sub-locations)
- ❖ Provision of chicken breed (all women and youth groups)
- ❖ Provision of Sahiwal breed (entire ward)
- ❖ Provision of pasture seeds (entire ward)

- ❖ Provision of drugs for animal vaccination against ECF, lumpy skin, foot and mouth, black quarter, foot rot, Loukoi, Losir, Fowl pox, bophyl pneumonia (entire ward)
- ❖ Provision of deworming (entire ward)
- ❖ Repair of all cattle dips in entire ward and make them functional.
- ❖ Provision of knapsacks sprayers to farmers in the entire ward.
- ❖ Provision of acaricides in the entire ward .
- ❖ Construction of cattle dips at Kopoch, Akimultin, Putor, Kapkaw, Chelowo and Chepkapechak.

ENVIRONMENT AND FORESTRY PROJECTS

- ❖ Provision of tree seedlings to all farmers.
- ❖ Establishment OF Tree nurseries in the entire ward at; chewoyet sub-location, mwotot sub-location, kamatira sub-location, tilak sub-location, chemwochoi sub-location, kaprom sub-location, ngoleyo sub-location, komol sub-location, chepkechir sub-location and narama sub-location.
- ❖ Planting tree seedlings in Kapkoris plantation Forest.
- ❖ Planting of a friendly trees to water catchment areas.

7. KASEI WARD PROJECT PRIORITIZATION

WATER PROJECTS

S/NO	PROJECTS	SUB-LOCATIONS	PROJECT LOCATION
1	BOREHOLES	Kamketo	-Kamariket
			-Kokwo Orolwo
			-Kasepa
			-Kokwotul
		Korpu	-Katukumwok
			-Sukut
			-Katumen
			-Alkok
		Kachawa	-Mokkokio
		Sirwach	-Sirwach primary school
		Songok	-Sokok

		Kour	-Apetaa
			-Lobot
			-Kour centre
		Ompolion	-Chepelion centre
			-Lutheran Junction
		Kaptolomwo	-Takar
			-Lutheran primary school
			-Kasaka Primary school
			-Chepiririch
		Kamunono	-Kongai
			-Chespen
			-Kamunono Girls
			-Kasopit
		Kasei	-Kalam
			-Kakitok ECD
			-Kasei centre
		Korokou	-Lorengamoi centre
			-Kapterema primary school
			-Cheptupongoy
			-Chepongini Primary school
			-Klaya centre
			-Chemasis village
		Chepkondol	-chepkondol primary school
			-Kadokony centre
2	WATER PANS	Kamketo	-Kotulpogh
			-Kasepa
		Korpu	-churum
		Songok	-Takaywa Junction
		Kaptolomwo	-Chepiririch

			-Losili
		Kamunono	-Chemuny
			-Kongai
		Kasei	-Kapcheror
		Korokou	-Surkoit
3	SUB-SURFACE DAMS	Kaptolomwo	-Embung
			-Natekeny
			-Chesuswon
		Kamunono	-Ngachan
			-Chemananga
		Kasei	-Porowit
		Korokou	-Kamkorany
			-Loshangura
		Korpu	-Kamatachuwivi
		Kachawa	-Ponpon
			-Opol
		Chepkondol	-Chepkondol
			-Tunyar centre
		Kamketo	-Kapyopuywo
		Ompolion	-Chemyony
4	PIPED WATER	Korpu	-Kangoletiang centre
			-Katuman
		Kachawa	-Morkorio centre
		Sirwach	-Sirwach centre
		Songok	-Takaywa Junction
		Kaptolomwo	-Kasepa to chesurma village
		Kasei	-Kapkewa primary chepchit to kawaw sorkoyit to kasei centre
		Korokou	-Chelongon to Namesek
			-Surkoit to Kapkreswa

		Chepkondol	-Embosimotwo to Tynyar ECD
5	PROTECTION OF WATER SPRINGS	Chepkondol	-Embosimotwo
		Korokou	-Chelongon
			-Surkoit
			-Chepchit
		Kasei	-Chepchit Kawaw
			-Kapkewa
			-Malkuy
			-Poywotwa
		Kaptolomwo	-Kampa
			-Amanang
			-Kampoi
			-Chesumwon
		Kamketo	-Kotulpogh
		Korpu	-Kangoletiang
			-Akiriamet
6	ROOF CATCHMENT	Kamketo	-St. John Kowo Orolwa ECD
		Korpu	-Kangoletinag Girls secondary
		Kachawa	Opol primary
		Kour	Kour primary school
		Katolomwo	-ELCK Katolomwo
			-Chesuswon
		Kamunono	Kasopit primary
		Chepkondol	-Tanyar ECDE
			-Tighot primary school
		Kasei	-Kalam primary

			Kapkewa primary school

AGRICULTURE PROJECTS

S/NO	SUB-LOCATION	HIGH BREED	LIVESTOCK BREED	KITCHEN GARDENS	PEST AND DISEASES	VACCINATION OF ANIMALS & CATTLE CRUSH	IRRIGATION
1	Kamketo	-DH 04 -PH 04 -513 -520 -SUNGURA -DUMA 43 -H 500 -H516 -SIMBA 61	-Sahiwal -Galla Goats -Somalia Gamels -Doper	-Amura -Embo Akoru -Kotulpogh -Tunoyo	-Fall armyworms -Cutworms -Armyworms -African armyworms -Bull worms	-PPR-Losur -DPP-Loukoy -ECF-Lokit -Kotulpogh cattle crush/Akoros	-
2	Korokou	-H6213 -H614 -H629 -H624 -H6218 -H6210 -PANA SEEDS	-Sahiwal -Doper -Freshian	-Surkoit -Chepchitkawal -Chemotony -Gatoy	-Fall armyworms -Cutworms -Armyworms -African armyworms -Bull worms	-Cattle dips PPR-Losur -DPP-Loukoy -ECF-Lokit -Chepoghin centre cattle crush/Akoros	-Namset at Surkoit
3	Kasei	-Sungura -H513 -Huduma 43 -H520	-Sahiwal -Doper -Galla Goats -Samali Gamels	-Kapcheror -Tumwonoy -Cheptur Tumunia	-Fall armyworms -Cutworms -Armyworms	PPR-Losur -DPP-Loukoy -ECF-Lokit -Koponolikaw	-Akelin

		-H516 -PH4			-African armyworms -Bull worms	cattle crush/Akoros	
4	KORPU LOCATION	-Sungura -H513 -Huduma 43 -H520 -H516 -PH4 -PH04	-Sahiwal -Doper -Galla Goats	-Korpu -Katukumwok -Katumen -Morkorio -Sirwach -Songok -Chepkondol -Kadukuny	-Fall armyworms -Cutworms -Armyworms -African armyworms -Bull worms	PPR-Losur -DPP-Loukoy -ECF-Lokit -Katukumwok cattle crush/Akoros	-Murkori -Kangoletiang -Kases -Ompolion -Sirwach -Kour
5	Kaptolomwo	-Sungura -H6210 -Huduma 43 -H624 -H6218 -H614 -H6213 -Panna seeds -Simba 61	-Sahiwal -Doper -Galla Goats -Freshian -Toggen burg -Ashier	-Natekeny -Kasaka -Chesuswon -Poghogh	-Fall armyworms -Cutworms -Armyworms -African armyworms -Bull worms	PPR-Losur -DPP-Loukoy -ECF-Lokit Cattle dips	-Nameset -Natekeny -Akelin
6	Kamunono	-H04 -H520 -H513 -H516 -Sungura	-Sahiwal -Doper -Galla Goats -Samali Gamels	-Tumunia -Cheptur -Katolkos	-Fall armyworms -Cutworms -Armyworms -African armyworms -Bull worms	PPR-Losur -DPP-Loukoy -ECF-Lokit	-
7	Ompolion	-H04 -H520	-Sahiwal -Doper	-Poghogh -Simotwo	-Fall armyworms	PPR-Losur -DPP-Loukoy	-Chesorma

		-H513 -H6213 -H6210 -H6218	-Galla Goats -Freshian	-Chepotiko	-Cutworms -Armyworms -African armyworms -Bull worms	-ECF-Lokit	
--	--	-------------------------------------	---------------------------	------------	---	------------	--

ENVIRONMENT AND FORESTRY PROJECTS

S/NO	LOCATIONS	TREE PLANTING	EDUCATION AND SENSITIZATION OF TREE PLANTING AND CONSERVATION	ESTABLISHMENT OF NURSERIES&TREE SPECIES	LAND RECLAMATION
1	KORKOU	-Embokatingwoy -Mistin -Surkoit -Chemotuyo	-Pochol centre -Lorengamol centre	-Surkoit, -Nameset -Chemotony, & Cupressus lusitanica,ceder, grievellia robusta, eucalyptus saligna	-Cheptadagh -Soghphogh -Kamkorany
2	KAPTOLOMWO	-Kampa(motong) -Adakole(choria) -Kampoy(ptanu)-- Ametes(Embong) -Suloi(chesapul) -Chepkor	-Takar centre -Kasaka centre -Chesuswon	-Natekeny, -Mono -Amanang, & Cupressus lusitanica,ceder, grievellia robusta, eucalyptus saligna	-Chemotokon -Chemindiril -Chesorma
3	KASEI	-Kasitot -Kapkewa -Tunoyo -Porowit	-Kasei centre -Kapkewa centre -Kalam centre	-Kaptekewa -Kasei & Cupressus lusitanica,ceder, grievellia robusta, eucalyptus saligna	-Akiriamet -Chemindiril -Kapcheror
4	CHEPKONDOL&OMPOLION	-Kachepchilip -Tighot -Cheptalamach	-Chepkondol centre -Chepelion centre	-Chepkondol centre, -Tunyar -Emporeperwo, & Cupressus lusitanica,ceder, grievellia robusta, eucalyptus saligna	-Tunyar

		-KOporus			
5	KAMKETO	-Apoyo -Tunoyo -Amura Kotulpogh pri -Kapsentol	-Kamketo centre -Kapsental centre	-Tunoyo, -Kotulpogh &Mwarubaine, taminalia brauna(Kloswo), poghotwo, fig tree(sycamore tree)	-Amura -Kamketo
6	KAMUNONO	-Cheptur -Kocholwo -Chepurwo -Chemananga	-Akelin centre	-Cheptur, -Chemananga &Mwarubaine, taminalia brauna(Kloswo), poghotwo, fig tree(sycamore tree)	-Chemuny -Cheptur -Chelokotetwo
7	KORPU	-Kangoletiang primary	-Kangoletiang centre	-Along Tarkwel River &Mwarubaine, taminalia brauna(Kloswo), poghotwo, fig tree(sycamore tree)	-Ateker

KASEI WARD AGRICULTURE PROJECTS 2023						
SUB-LOCATION	HIGH BRED SEED	LIVESTOCK BREEDS	Kitchen gardens	Pests and Diseases	Vaccination of Animals	IRRIGATION
1. KAMKETO	- BH 04 - PA 04 - S13 - S20 - SUNDURA - DUMA 43	- SAHINAL BRED - HST6 - HST6 - JAMELA Gants - JAMELA Gants - DOPER	- AMURA - ENBO AKOZU - KOTUK POGH - TUNUYO	- FALL ANTHUSION - CAT WORM - ARMY WORM - AFRICAN ARMY WORM - BULL WORM	- BPA - Le SUR - DPP - LOKIT - BCF - LOKIT - KATUKUMUWA - KATUKUMUWA	
2. KORPU - Sub-Location	- H 6213, H 614, H 629, H 624, H 612, H 6210, Pana seed,	- Sahiwal - DOPER - Freshian	- Sahiwal - Chapotikwa - CHAPOTIKWA - GATOT))	- CATUG DIP)) - CHAPOTIKWA - CATUG DIP	NAMESSET - SURKUT
3. KASEI - SUB LOCATION	- Sungura H513, Huduma H3, H520, H516, PH 4	- Sahiwal - DOPER - Galla goats - Samal Camal	- Kapchakar - Tumunony - Chapur - Tumunony)))) - KATUKUMUWA - CATUG DIP	AKELIN
4. KORPU - SUB LOCATION	- Sungura H513, PH 04, Huduma H3, H520, H520, H516, PH 4	- Sahiwal - Galla goats - DOPER	- Korpu - KATUKUMUWA - KATUKUMUWA - MOKKORIO - SIRUWA - SONGOK)))) - MOKKORIO - KANGALING - KASEI - ONPOLION - SIRUWA - KOUR	
5. CHOPKANDOL	- H 6213, H 614, H 6210, H 6212, Pana seed	- Freshian - DOPER - Jersey	- Chapchakar - Kadukung)))) - KATUKUMUWA - CATUG DIP	

Pg 3

KASEI WARD AGRICULTURE PROJECTS						
SUB-LOCATION	Hybrid Seeds	LIVESTOCK BREEDS	Kitchen gardens	Pests and Diseases	Vaccination of Animals	IRRIGATION
1. KAPULUWA	- H 6213, H 6210, H 624, H 624, Pana seed, Sungura H 6212, H 614	- Freshian - Sahiwal - DOPER - Toggenburg - Ashier	- Nutekany - Karaka - Chusuwon - Poshogh	- Fall Anthusion - CAT WORM - ARMY WORM - BULL WORM - AFRICAN ARMY WORM	- PPR - LOUR - ECF - LOKIT - DPP - LOKIT - CATTLE DIP	- NAMESSET - NATEKONG - AKELIN
2. KAMUNONO	- H 04, H 520, S13, H 516, Sungura	- DOPER - Sahiwal - Samal Camal - Galla goats	- Tumunony - Chapur - KATUKUMUWA))))))
3. ONPOLION	- H 04, H 520, S13, H 6213, H 6210, H 6212	- Sahiwal - DOPER - Freshian - Galla goats	- Poshogh - smotwo - chapotikwa))))	- CHAPOTIKWA

KASEI WARD WATER PROJECTS						
SUB-LOCATION	Boholes	Water Pans	Sub-Surface	Piped Water	Water Storage	Roof Catchment
1. KAMKETO	- KAMKETO - KAMKETO - KAMKETO - KAMKETO	- KOTUK POGH - KASEPA	- KA POGH POGH	-	- KOTUK POGH - KASEPA	- KASEPA
2. KORPU	- KA KASEPA - SUKUT - KATUKUMUWA - ALKON	- Churum	- Kameto Churum	- Kangalobang - KATUKUMUWA	- Kangalobang - KATUKUMUWA	- Kangalobang - KATUKUMUWA
3. KACHANA	- MOKKORIO	-	- Pan Pan - OFA	- MOKKORIO - CHURUM	-	- OFA - PAN PAN
4. SIRNACH	- SIRNACH POGH	-	-	- SIRNACH - CHURUM	-	-
5. SONGOK	- SONGOK - TAKUMA JUNCTION	- TAKUMA JUNCTION	-	- TAKUMA - JUNCTION	-	-
6. KOUR	- APETAN - LOBOT - KOUR CENTRE	- LOME/PAN - KAPULUWA	-	-	-	- KOUR - PAN PAN
7. ONPOLION	- CHAPOTIKWA - LUTEMAN JUNCTION	-	- CHAPOTIKWA	-	-	-

KASEI WARD PROTECTED WATER

SUB-LOCATION	Boholes	Water Pans	Sub-Surface	Piped Water	PROTECTION OF WATER STORAGE	ROOF CATCHMENT
1. KAPULUWA	- TAKAR - LUTEMAN POGH - KASEPA - CHAPOTIKWA	- CHAPOTIKWA - LOKIT	- ENBUNG - NATEKONG - CHUSUWA	- KAMKETO - KAMKETO - KAMKETO	- KAMKETO - KAMKETO - KAMKETO	- ELCK - KOTUK - KASEPA - KASEPA
2. KAMUNONO	- KAMKETO - CHAPOTIKWA - KASEPA	- CHAPOTIKWA - KASEPA	- NATEKONG - CHUSUWA	-	-	- KASEPA
3. KASEI	- KASEI - KASEI - KASEI	- KASEI - KASEI	- KASEI - KASEI	- KASEI - KASEI	- KASEI - KASEI	- KASEI - KASEI
4. KOROKOU	- KOROKOU - KOROKOU - KOROKOU	- KOROKOU - KOROKOU	- KOROKOU - KOROKOU	- KOROKOU - KOROKOU	- KOROKOU - KOROKOU	- KOROKOU - KOROKOU
5. KASEI	- KASEI - KASEI - KASEI	- KASEI - KASEI	- KASEI - KASEI	- KASEI - KASEI	- KASEI - KASEI	- KASEI - KASEI

INFINIX AI CAMERA

KASEI WARD ENVIRONMENT AND WATER PROJECT FOREST

SUB-Location	Planting of Trees	Sensitization & Planting and conservation	Tree Nurseries	Types of Seedlings	Gabbions
1 Korkou	- Embokatingway - Mustin - surkoit - Chemotuyo	- Pochel Centre - Lorengumol Centre	- surkoit - Namereet - Chemotony	- cypress - Cedar - Gruevella - Blue gum	- Cheptadagh - soghpogh - Kamkorany
2 Kapblomwo	- Kampa - Adakolke - Kampoy - Amates - Chokkor - motong - Choria - Pianu - Embung - Chelapui	- Takar Centre - Kasata Centre - Chesusuon	- Platekeny - Mono - Amanang	>>	- Chemotakon - Cheminduri - Chesorma
3 Kasei	- Kasikot - Kapkewa - Tunoyo - Porowit	- Kasei Centre - Kapkewa Centre - Kalam Centre	- Kapkewa - Kasei	>>	- Akirameet - Cheminduri - Kapcheror
4 Chepkondol ombolion	- Kachapchilip - Tighot - Cheptelamach - Kaporur	- chepkondol Centre - chepelion centre	- chepkondol Centre - Tunyar - Emboreperwo	>>	- Tunyar
5 Kamketo	- Apoyo - Amura - Kotul pogh - Tunoyo - Kapsentol	- Kamketo Centre - Kapsentol Centre	- Tunoyo - Kotul pogh	- mwarubainia - kolawo - poghyet - Siamore	- Amura - Kamketo
6 Kamunono	- cheptur - Kachetwo - chepurwo - chemananga - Kangoletiang - Fry	- Arkelin Centre - Kangoletiang Centre	- cheptur - chemananga - along - turkawel	>>	- chemony - cheptur - chelokotetwo - Atker
7 Korpuy					
8					
9					
10					

Pg 5



INFINIX
AI CAMERA

8. KIWAHA PROJECT PRIORITIZATION

WATER PROJECTS

S/NO	PROJECT	SUB-LOCATION	LOCATION/AREA
1	BOREHOLES	Kiwawa	-Narorete
			-Lowol-Oron
		Katumkale	-Katumkale-Roro
		Kases	-Chepuser
			-Nangolesinyon
		Pcholio	-Kakopon
			-Katamas
		Chelopoy	-purkich
			-abur
		Wasat	-karianamoru
		Ngaswa	-ngaswa
		Mbaru	-sitot
		Cheprochpogh	-moinoi
2	WATER PANS	Chelopoy	-kamoros
		Pcholio	-Napeilel
		Kases	-Nangolesinyon
			-Cheporon
		Natemberi	-Chelokotetwo
3	SUB-SURFACE DAMS	Natemberi	-Natemberi
		Kases	-Atita
			-Tentukuch
		Kiwawa	-Apunipun
			-Napur River
		Katumkale	-Relnoi
		Pcholio	-Kaingeny
			-Kakopon
		Melee	-Cheptum
		Kauriong	-Lopulia
			-Nguriakamar
		Sincholol	-Kaibong
			-Siyoyowo
		Katuda	-Chemaknagh
			-Lomunyuny
			-Yemtin
		Chelopoy	-Ktuntich
			-Chemnarich

4	PIPED WATER	Sincholol	-Kamila water system to Kamila Centre
		Chelopoy	-Tatwa solar system to Chepkinagh Primary, Chepkinagh Secondary School and Chelopoy Dispensary.
5	Protection of water springs	Lopet	-Chemoril water spring.
		Ngaswa	-Paghyat water spring.
6	Roof catchments	Sincholol	-Sincholol primary school
		Kases	-Kases Dispensary
			-lowoi primary school
		Lopet	-Lopet boys Secondary school
		Chelopoy	-Chelopoy boys Secondary school
		Katuda	-Katuda Primary School
			-Atatar Primary school
		Chepkinagh	-Chepkinagh primary school
			-Moinol primary school
		Malee	-Malee primary school

AGRICULTURE AND LIVESTOCK PROJECTS

- Galla goats breeds- To all women groups, youth groups in entire ward
- Introduction of modern technics in rearing of chickens in entire ward.
- Somali Camels to be introduced to change the breeding in entire ward.
- Introduction of hay farming to entire ward farmers.
- Construction of metallic cattle crush(Akoros) in all sub-locations(15).
- Vaccination of livestock between March and June, every year.
- Provision of resistant drought and diseases crops in entire ward between January and February.

ENVIRONMENT AND FORESTRY PROJECTS

- NURSERY BEDS: Nursery beds to be distributed to every water sources at; Kases,Tarakit, Kamila, Katuda, Tatiwa and Pcholio water sources.
- Protection of water forests catchments at Pcholio and Kapkghin
- Tree seedling distribution in every sub-location.
- Construction of gabions in Katunda, Kiwawa, Katumkale, Kases, Chepropogh(sub-locations)

24th July, 2023
KIWAWA WATER PROJECT
ACK KIWAWA GUEST HOUSE

- a) Boreholes
- Nakoyete (Kiwawa sub location)
 - Katumkale - Roro (Katumkale sub lo)
 - Natemeru (Natemeru sub-location)
 - Lowol - Oron (Kiwawa sub-location)
 - Chepusev (Kases sub location)
 - Nangolejinyon (Kases location)
 - Kakopon (Pcholio sub-location)
 - Katamad (Pcholio sub location)
 - Purkich (Chelapoy sub location)
 - Abur (Chelapoy sub-location)
 - Kananamovu (wasat sub lo)
 - Ngaswa (Ngaswa sublocation)
 - Sitot (Mbam sublocation)
 - Moimoi (Chepochpogh sub. lo)
- b) Water Pans
- Chelapoy Kamotcos
 - Napelid (Pcholio sub location)
- c
- Nangolejinyon (Kases sub-lo)
 - Chelokatetwo (Natemeru sublocation)
 - Cheporon (Kases sub location)

Pg 1

KIWAWA WATER PROJECT

- b) Sub-surface dams
- Natemeru (Natemeru sub-lo)
 - Atita (Kases sublocation)
 - Apunipun (Kiwawa sub-lo)
 - Relnoi (Katumkale sub-lo)
 - Tentukuch (Kases sub-location)
 - Kaingony (Pcholio sub-location)
 - Kakopon (Pcholio sub-lo)
 - Cheptum (Melee sub-lo)
 - Lopulia (Kauriong sub-lo)
 - Ngurakamav (Kauring ")
 - Kaibong (Sinchol ")
 - Sitotowo (Sinchol ")
 - Chonaknagh (Katuda ")
 - Lomumuny (Katuda ")
 - Temtin (Katuda ")
 - Ktuntich (Chelapoy ")
 - Chemnarich (Chelapoy ")
 - NABUR RIVER (Kiwawa sub-location)

- d) Piped WATER
- Kamila Solar System to Kamila Centor. (the Sinchol sub-location)
 - Tatwa Solar system to Chepknagh Primary and Secondary school and to Chelapoy dispensary.

- e) Protection of water Springs
- Chemvit water springs local sublocation
 - Pagh-tat water springs ngaswa sublocation.

KIWAWA WARD
WATER PROJECT

- Ret catchments
- Water tanks for schools at
 - Sinchol Primary school
 - Kaur dispensary
 - Lowol Primary school
 - Lapet boys sec school
 - Chelapoy Boys sec school
 - Katuda Primary school
 - Atodai Primary school
 - Chepknagh Primary school
 - Moimoi Primary school
 - Melee Primary school



INFINIX
 AI CAMERA

• KIWAWA WARD AGRICULTURE AND LIVESTOCK PROJECT

- a) Galla goats breeds - To women groups, Youth groups in the entire ward.
- b) Introduction of modern techniques in rearing of chickens in the entire ward.
- c) Somali camels to be introduced to change the breeding in the entire ward.
- d) Introduction of hay farming to the farmers in the entire ward. Chelopo, Matuda and Kalo locations.
- e) Construction of Metallic cattle crush ^{Akores} in the fifteen sub-locations in the ward.
- f) Vaccination of goats, cattle, sheep and camels in the month between March to June every year. in the entire ward.
- g) Provision of resistant crops to drought and diseases to the entire ward (farmers) in the month of January and February.



INFINIX
AI CAMERA

KIWANA WARD
ENVIRONMENT AND FOREST PROJECT

- a) Nursery beds - Nursery beds to be distributed to every water source ~~in~~ ^{at} ~~Mt. Kases~~ ^{Kases, Tarakizi, Kanila}
Katula, Latvia and Pcholia water sources
- support of Youth groups in every nursery bed
- b) Protection of hilly forests within the catchments in Kasibia, Pcholia and Kapkothui
- c) Planting of trees as 1000 seedlings in every sublocation
- d) Construction of cabins in Katula sublocation, Chelapoy sub-location and Cheproch Pogh sub location
 - Kiwana. Natemeti sub-location
 - Katunkale Katunkale Sub location
 - Kases location Kases.

PS 5

KIWANA WARD
PROJECT PRIORITIZATION



INFINIX
AI CAMERA

9. KODICH WARD PROJECT PRIORITIZATON AT KODICH V.T.C ON 25TH JULY, 2023.

WATER PROJECTS

S/NO	PROJECTS	SUB-LOCATIONS	SITE
1.	BOREHOLES	➤ Lokicha	• Kadoko
		➤ Orolwa	• Karon
		➤ Chematchor	• Kaparnaum
		➤ Krimti	• Lokii
		➤ Karameri	• Lokorcholia
		➤ cherangan	• parasnta
		➤ nakwijit	• cheptungus
		➤ Katopoton	• Chepkaner
		➤ Kalemngorok	• Ausakuyon
		➤ kodich	• Cheptapa
2	WATER PANS	➤ Lokichar	• Abanangoi
		➤ Orolwa	• Chepokilipa
		➤ Chematchor	• Kongotunyo
		➤ Karameri	• Komolsiwa
		➤ cherangan	• Kanakacheret
		➤ nakwijit	• Chemworokoi
		➤ Kalemngorok	• Atirirai
		➤ kodich	• Kanyageni
		➤ Krimti	• Kalas
		➤ Katopoton	• Kres
3	SUB-SURFACE DAMS/SAND DAMS	➤ Lokicha	• Chepokatina
		➤ Orolwa	• Kapul
		➤ Chematchor	• Chemlangkawagh
		➤ Karameri	• Koyolo

		➤ cherangan	• Namuton
		➤ nakwijit	• cheporono
		➤ Kalemngorok	• Ngoriarem
		➤ kodich	• Lomada
		➤ Krimti	• Kalas
		➤ Katopoton	• Mokongwo

AGRICULTURE AND LIVESTOCK PROJECTS

S/NO	PROJECTS	SUB-LOCATIONS	SITE
1	ANIMAL BREEDING(Galla goats, Sihiwal)	All sub-locations	Entire ward.
2	Drought and resistant seeds(DH 04,-PH 04, - 513,-H520, -SUNGURA,-DUMA 43,-H 500, - H516,-SIMBA 61)	All sub-locations(10)	Entire ward
3	IRRIGATION	<ul style="list-style-type: none"> ➤ Nakwijit ➤ Cherangan ➤ Kalas ➤ Kalemngorok 	Fraction of kodich ward.
4	ANIMAL VACCINATION	All locations(10)	Entire ward

ENVIRONMENT AND FORESTRY

S/NO	PROJECTS	SUB-LOCATIONS	SITE
1	LAND RECLAMATION(BUILDING OF GABBIONS)	ALL LOCATIONS(10)	Entire ward
2	ESTABLISHMENT OF TREE NURSERIES	All sub-locations(10)	Entire ward
3	TREE PLANTING	All sub-locations(10)	Entire ward

KODICH WARD
KODICH WARD PROJECT
PRIORITIZATION
VENUE KODICH VTC 25/7/2023

1. WATER PROJECTS

SN	PROJECT	Sub location	Location / area
	Boreholes	Lokichar	Kadoko
		Orolwo	Karon.
		Chematchor	Kaparnaum.
		Krimti	Lokii
		Karameri	Lokorcholia
		Cherangan	Parasnta.
		Nakwijit	Cheptungus.
		KatoPoten	Chepkarar.
		Kalemngorok	Ausakuyon
		Kodich	Chepfapa.

Pg = 1

Projects	Sub-Location	Location/Area.
Water Pans.	Orolwo	Chepokilifa
	Lokichar	Abangai
	Kalemngorok	Atirai
	Kodich	Kanyageni
	Krimti	Kalas.
	Chematchor	Konyotungo
	Karameri	Komolsiwa.
	Cherangan.	Kanakacheret.
	Nakwijit	Chemworokoi
	KatoPoten	Mokongwa:
		Kres

Pg = 2

Project	Sub-Location	Location/Area
SAND DAMS	Orolwa	Kapul
	Lokichar	Chepokatina
	Kalemnyorok	Ngoriarem
	Kodich	Lomada
	Krimti	Kalas
	Chematchor	Chemlangkangah
	Karameri	Koyolo
	Cherangan	Hamuten
	Nakwijit	Cheporono
	Katopoten	Mokongwo

Pg=3

Project	Sub-Location	Location/Area
Purchase of drought resistance animals e.g. Gallinets and Simals	10 s/Location	Entire Ward.
Drought Resistance seeds	10 s/Location	Entire Ward.
Irrigation	Nakwijit Cherangan Kalas Kalemnyorok	Fraction of Ward.
Vaccination of Animals	10 s/Location	Entire Ward.

Pg=4

KODICH AREA

		KAPTABUK	<ul style="list-style-type: none"> • MURKUSIAN-PARAYON-PTUNYONY • MURKUSIAN-KAPTABUK-MUSEE • MURKUSIAN-KAPOROR-SARAMEE • CHEMNGOPEOI-KTOMNGWUNY
		CHEPARTEN	<ul style="list-style-type: none"> • MURKUSIAN-CHEPARTEN • MURKUSIAN-CHEPARTEN • TACHIT-KAPKOROL-CHEPKOROK • CHEPARTEN-APUK-CHELEE-
		MESHAU	<ul style="list-style-type: none"> • KAPKUNYUK-KAPSEPAI
		MOKOYON	<ul style="list-style-type: none"> • TOMBO-TRIK-PKONDUL-NYAL • KARIAMAKITAI-TUKUMO-KOSHONA • EMPOGHAT-POROW-CHEPKONDOL-CHAKCHAK-KAPTUM-KAPCHEMUK
		TONOYON CHEPKONO KALOTWARI CHEPKONO	<ul style="list-style-type: none"> • CHEPUKAT-LAIN-MOKOYON • POROWO-CHESOROM-PLEL-KOROSIN-KAPSIKORIO • DARAJA MUNGU-KANYANGURU-CHEMALTIN-KOITUMOT • KABICHBICH-KALOTWARI-CHEPKONO • KABICHBICH-MURUNY-KOITONGOGH • CHESUSTIN-MANIAN-AKIRIE
		KABICHBICH MBAYAI KAPKANYAR CHESUPET	<ul style="list-style-type: none"> • KAPTALA INTAKE-KAPTALA PRIMARY-KOCHECH • LORETE-OXEN-CHEPKOWT-PUNYONG • KONYOMNYOM—CHOROK-PTIYIN-CHESIKICH • MINTRILWO-MELEWA-CHEPKIENY- • KONYOMNYOM-KABICHBICH CENTER • CHEMORTO-CHESIROR—CHEPTOMOT-KABICHBICH CENTER CENTER • KABICHBICH KFS OFFICE-PKONDOL-MURUNYPRIMARY • IMONPOGHET-TUKUMO-MBAYAI PRIMARY • CHEPARTEN CAHOLIC-KAPKATEI-REMAA-KAPKRAKEN • MORKANYERET-KADUKUNYA ECD & VILLAGE • KIPAT-RING RING-CHEPORORWO • KIPAT-MORWAPUS-LOYAMOROK-CHESELKICH-EMBOGHAT • KOIKOM-CHEPOSAT-CHORWAI-PURIKUT

			<ul style="list-style-type: none"> • KAMSIS-CHESUPET DISPENSARY-KAPKANYAR PRIMARY • MOTPO SOO-IMONPOGHET-KAMSIS • KOKWOPLEKWA-KAPSAIT CENTER &SCHOOL
2	PROTECTION OF WATER SPRINGS	KAPSANGAR KAPTABUK CHEPARTEN KABICHBICH MBAYAI KAPKANYAR CHESUPET TONoyON CHEPKONO KALOTWARI	<ul style="list-style-type: none"> • KAPSANGAR,CHEPUNGON • KAPTABUK • CHEPARTEN • KONYOMNYOM,KANYALTIN CENTER,KABICHBICH H.CENTER • KFS OFFICE,MINTRILWO MELEWA • RINGRING CENTER • KAMSIS • DARAJA MUNGU,CHEMALTIN, KANYANGURU • CHEPKONO • CHEMUSUK
3	PROVISION OF WATER TANKS	ENTIRE WARD	
4	FOG HARVESTING	KAPSANGAR KAPSAIT KABICHBICH	SOKOTIA KAPSAIT CHEPIOMOT
5	PROVISION OF WATER PUMPS(HYDRO & SOLAR)	KAPSANGAR	TAPAS-MURKUSIAN-KESOM-KAPSANGAR

AGRICUTURE AND LIVESTOCK PROJECTS

SN	PROJECTS	SUBLOCATIONS	PLACE/SITE
1	CONSTRUCTION OF CATTLE DIPS	KAPSANGAR KABICHBICH MBAYAI KAPKANYAR CHESUPET KAPSAIT	<ul style="list-style-type: none"> • PTUNYONY,PARAYON • KANYALTIN,MELEWA • KADUKUNYA,REMAA,TUKUMO, KIPAT • PARIS AMONGOLE • PURIKUT, KOIKOM • KWOKWOPLEKWA, YARANGIRO
2	CATTLE DIP RENOVATION	KAPSANGAR KAPTABUK	<ul style="list-style-type: none"> • KAPSANGAR,PLALANG,CHEPUNGON,M URKUSIAN,KOOGHM • CHEPKONDOL,CHEPARTEN,KAPTABUK
3	PROVISION OF ACCARICIDES	ENTIRE WARD	
4	VACCINATION (ACF, LCD, BLACK QUARTE, FMD)	ENTIRE WARD	
5	SHEEP DIP	KAPSANGAR	<ul style="list-style-type: none"> • KAPSANGAR, PCHIKOROR
6	BREEDING CENTERS (SHEEP, CATTLE, GOATS)	EVERY SUB-LOCATION	
7	PROVISION OF CERTIFIED SEEDS (POTATOES, MAIZE, ONIONS,	ENTIRE WARD	

	FRUITS)		
8	POTATOES COOLING STORE	KAPSANGAR KAPTABUK LELAN	<ul style="list-style-type: none"> • KAPSANGAR • KAPTABUK • MBAYAI, KAPSAIT, TONUYON
9	PROVISION OF FERTILIZERS AND FUNGICIDES	ENTIRE WARD	
10	ESTABLISHMENT OF FRUIT NURSERIES & FODDER TREE NURSERIES	EVERY SUB-COUNTY	
11	ESTABLISHMENT OF GREEN HOUSES	EVERY SUB COUNTY	
12	INTRODUCTION OF BAMBOO FARMING	ENTIRE WARD	
13			

FORESTRY AND ENVIROMENT PROJECTS

S/N	PROJECTS	SUB LOCATION	PLACE/SITE
1	ESTABLISHMENT OF TREE NURSERIES	EVERY SUB LOCATION	
2	PROTECTION OF CATCHMENT EREAS	ENTIRE WARD	
3	PROTECTION OF FORESTS	KAPSANGAR CHEPKONO	KAMSIS SISO KAMONGES PSUKUNO KAPKANYAR
4	COMMUNITY SENSITIZATION ON CLIMATE CHANGE	ENTIRE WARD	
5	EMPLOYMENT OF FOREST GUARDS	ENTIRE WARD	

RECOMMENDATION

THE MEMBERS OF THE COMMITTEE RECOMMENDED THE FOLLOWING

- I. OTHER STAKEHOLDERS LIKE KFS OFFICE AND PASTORS TO BE INCLUDED
- II. COMMUNITY PARTICIPATION IN LICENSING OF TIMBER TRANSPORTATION
- III. BENCHMARKING BY COMMITTEE MEMBERS

11. LOMUT WARD

PROPOSED CLIMATE ADAPTATION AND MITIGATION PROJECTS 2023-2027 DONE IN SIGOR KVDA CENTRE ON 14TH & 15TH JULY 2023

A) Climate Hazards with High Impact in the Ward

1. Drought / Long Erratic Rainfall
2. Floods
3. Landslides

B) Priority Areas and Proposed Climate Adaptation and Mitigation Projects

1) Water Projects for Climate Change Adaptation

a) Drilling of Boreholes in Masol Location (9 number)

- i) Kakitongin/Kosholoi
- ii) Kamanau
- iii) Cheposowulo
- iv) Ka-tanakit
- v) Arayon
- i) Koposes
- vi) Spo
- vii) Kositot (Kona)
- viii) Kampindege
- ix) Pilil
- x) Sapulmoi
- xi) Chemurmuria
- xii) Tokoghos

a) Construction of Water Pans (7 number) at:

- i) Ses
- ii) Ka-Ngoria
- iii) Kachelip
- iv) Kamanau
- v) Kangalan Rock Catchment
- vi) Koiket
- vii) Kakorosion
- viii) (Kona)
- ix) Chemnyakau
- x) Ka-panyirit
- xi) Rata Sub-surface Dam (Barrier)
- xii) Koposes-Kopulwo
- xiii) Kapetakinei
- xiv) Poru Sub-surface dam

b) Supply of 50,000 to 100,000 Litres Water Tanks to Schools and Community Amenities

- i) Catherine IM Primary
 - ii) Parkino Pry
 - iii) Kamanau Pry
 - iv) Koposes Pry
 - v) Toghomo Pry
 - vi) Sakata Pry
 - vii) Katinot Pry
 - viii) Chemuserion Pry
 - ix) Ptulungwo Pry
 - x) Kositot Pry
 - xi) Sapulmoi Pry
 - xii) Chiefs Office Lomut
 - xiii) Kokworitit Pry
 - xiv) Chemutlokotyo Sec
 - xv) Chesta Girls Sec
 - xvi) Annet Dispensary
 - xvii) Komugh Pry
 - xviii) Ptirap Pry
 - xix) Arpollo Pry
 - xx) Chemaley pry
 - xxi) Kisera Dispensary
 - xxii) Anniken pry
 - xxiii) Cherelio Pry
 - xxiv) Ngochoi Community Water Tank
 - xxv) Seito Assistant Chiefs Office
 - xxvi) Ka-sesoi Community WT
 - xxvii) Nyinyot ECDE
 - xxviii) Marus/Sororo Pry
 - xxix) Pararas ECDE
 - xxx) Otiot Dispensary
 - xxxi) Lomut Dispensary
 - xxxii) Arpollo Dispensary
 - xxxiii) Molos Pry
 - v) Annet Secondary\Cheratak Pry
- Piped Water**

- i) Pteya-Kim
- ii) Rata-Arpollo
- iii) Poru-Kaloshombo
- iv) Cheptokol-Cheposoulo (Toghomo)
- v) Poru-Cherelio
- vi) Kokipor-Kona
- vii) Kokipor-Kokwomeses-Chemaley
- viii) Poru-Anniken
- ix) Kalala-Ptirap
- x) Cheromol-Annet-Komugh
- xi) Suwa-Sukuk
- xii) Naach-Chemaley
- xiii) Kokwomonges-Sintai-Chesta
- xiv) Empoghoyi-Komolwo-Pkopogh-Molos
- xv) Annet-Chepar(Kewaghilat)

b) Agriculture /Livestock Projects for Climate Change Adaptation

i) Construction of Cattle Dips at:

Seito Sub-location

- Kosholoi
- Kapanyirit
- Siron (Ka-Domonyang)
- Toghomo Sub-location-Koposes, Tapashak, Kitany
- Mogho Sub-location-Sala, Kasiritian
- Ptiasis Sub-location-Katinot, Ptulungwo, , Katukuri
- Kositot Sub-location-Pkarieny, Rosos
- Nyorpotwo-Kamatamogh (Arpollo, Sapulmoi
- Lebei Sub-location-Kokwositot, Kewarel
- Ptirap Sub-location-Ptirap Centre, Seiton
- Annet Sub-location-Annet
- Sukuk-Sublocation-Sukuk, Pitpagh
- Pkopogh Sub-location-Chemain, Topowon
- Marus Sub-location-Kaptilel
- Kapatet Sub-location-Chemuseria, Masat
- Kokwopotorir Sub-location-Chemutlokotyo, Sasach, Sakat, Korora

Note: Goats Dip be constructed especially in the lower parts of the ward e.g. Seito, Toghomo, Mogho, Kositot, Nyorpotwo, Lebei . Two Goats Dips in each Sub-location

ii) Pasture Establishment and Growing of Fodder Crops at:

- a) Seito-Kangoria
- b) Toghomo-Tililisyon/Katanakit
 - o Mogho-Ka-kitorion
 - o Ptiasis-Arayon/Chemotoywo
 - o Kositot-Kakorosion
 - o Nyorpotwo-Parases
 - o Lebei-Kewarel
 - o Establishment of Disease Control and Vaccination Centre for the ward to provide Extension, Vaccination, and Laboratory Services

c) Environmental Conservation and Forestry Climate Adaptation /Mitigation Projects

- a) Establishment of Tree Nurseries in every sub-location:-
 - Seito-Parkino
 - Toghomo – Emboro -Reperowo
 - Mogho-chemila
 - Ptiasis- ptulugwo
 - Kositot- cheponot
 - Nyorpotwo- tilomwo
 - Lebel- kokwositet/ksaa
 - Ptirap- ptirap,snukur primary
 - Annet – annet, tilakai
 - Sukuk- sukuk,Aiamat
 - Kokwoptorir-chorwa, sakat
 - Kapatet- kokworitit, mnyekok
 - Marus- pyotwo, marus primary
 - Pkopogh- sororo,kapara
 - Supporting to existing new women, youth, CBO,communities, mother-mother group tree nurseries in every sub-location.
 - Tree planting in schools/institutions
- b) Purchase and Distribution of Fruit and Tree Seedlings to farmers and Schools
- c) Tree Planting of Trees and Fruit Trees in Schools (Greening of Schools)
- d) Sensitization on Riparian and Buffer Zones Conservation

12. MASOL WARD

Climate Hazards with High Impact in the Ward

1. Drought / Long Erratic Rainfall
2. Zoonotic and Crop Pests and Diseases
3. Soil Erosion and Floods

Priority Areas and Proposed Climate Adaptation and Mitigation Projects

A) Water Projects for Climate Change Adaptation

Construction of Water Pans (6 number) at:

- xiii) Chelanget
- xiv) Topoliangole
- xv) Kokwokochiey

- xvi) Ketyam
- xvii) Chepelion

Akulo

Desilting and Expansion of Colonial Waterpans (11 number)

- ii) Simbol
- iii) Amolem
- iv) Chepserim
- v) Chemuro
- vi) Lomortum
- vii) Kopotarit
- viii) Chemotongen
- ix) Kaywongole
- x) Lotome
- xi) Lopauko
- xii) Nyangaita

Drilling of Boreholes in Masol Location (8 number)

- i) Lochurum
- ii) Lotome
- iii) Lotongot
- iv) Kaywongole
- v) Tirokwo
- vi) Kakorosion Centre
- vii) Kopotarit
- viii) Adoket-Po-Akortin

Drilling of Boreholes in Sekerot Location (11 Number)

- xxxiv) Lokong
- xxxv) Chelangat
- xxxvi) Kokocha
- xxxvii) Nyangaita (Ngsiray)
- xxxviii) Pelpel
- xxxix) Amoler
- xl) Cheperen
- xli) Cheprukut
- xlii) Akulowater trough?
- xliii) Kolosia
- xliv) Lalwa Poroy

B) Agriculture /Livestock Projects for Climate Change Adaptation

- iii) Irrigation along river Kerio from Takaywa to Chirkil to Sekerot
- iv) Establishment of Amolem Irrigation Scheme through Construction of Irrigation Furrow from Akiriamet to Amolem
- v) Establishment of Irrigation Scheme at Arrayon (Kokpor-Kona-Arrayon)

- vi) Purchase and Distribution of Solar Powered Water Pumps (6 Number) for Irrigation along Weiwei River at:
 - a) Kaitatopos
 - b) Kaipra
 - c) Sopowo
 - d) Akiriamet
 - e) Nakipetot
 - f) Amolem
- vii) Pipeline water from Psiko-Runo-Tikit-Arror-Chepserim-Lotongot
- viii) Piping Water from River Kpas from Kokpor intake through Kona-Kamariach-Arayon-Nyagaita
- ix) Piping of Water from Muruny River to Romporion , Akiriamet-Chepaywat.
- x) Pasture Establishment and Growing of Fodder Crops at:
 - c) Simbol
 - d) Arayon
 - e) Akoros
- f) Fencing of Masol hills for pasture regeneration
- g) Expansion of Chemokuit farm
 - h) Construction of Hay shades/Stores at Simbol
 - i) Formulation of Community Policy for governing the conservation of Masol hills pasture land

C) Environmental Conservation and Forestry Climate Adaptation /Mitigation Projects

- a) Support establishment of fruit tree nurseries (2 Number) at:- Kaitapos and Akiriamet
- b) Purchase and Distribution of Fruit and Tree Seedlings to farmers and Schools
- c) Tree Planting of Trees and Fruit Trees in Schools (Greening of Schools)

d) CONFLICTS AND GENDER MAINSTREAMING

- Gender balance for trainings, women, youths, marginalized groups, people living with disability, elders must be represented.
- Uniting the communities in border areas through various peace trainings, development projects that can benefits both the communities, i.e., border schools.
- Organizing tournament, sports and beauty contests at:
 - i) Orwo
 - ii) Sarmach
 - iii) Nasolot
 - iv) Kambi- Karai
 - v) Lamu-nyeusi
- Building of border schools and churches at,
 - i) Kambi-karai
 - ii) Sarmach
 - iii) Nasolot
 - iv) Orwo

13. MNAGEI WARD

PROJECT PRIORITIZATION HELD ON 29TH JULY, 2023 AT MTELO HALL

WATER PROJECTS

SN	PROJECTS	LOCATION	SUBLOCATION	PLACE/SITE
1	BOREHOLES (SOLAR POWERED)	KISHAUNET	SUKUT LITYEI	<ul style="list-style-type: none"> TOTUM SECONDARY KAPLELACH KORORO ACK CHURCH
		MNAGEI	TARTAR	<ul style="list-style-type: none"> KOMOLEE ECDE TARTAR DISPENSARY
		KERINGET	KERINGET CHEPTUYA KERINGET	<ul style="list-style-type: none"> KANGLIKWAN CHURCH CHEPKOCHYO ECD NACHUKUT
2	SUB-SURFACE DAMS	KERINGET	MORTOME	<ul style="list-style-type: none"> CHEPINYINY RIVER
3	EXTENSION OF PIPES	KERINGET	LOKORNOI	<ul style="list-style-type: none"> LOKORNOI WATER FALLS
4	PIPED WATER	KISHAUNET	LITYEI	<ul style="list-style-type: none"> KAPLELACH RIVER
		MNAGEI	KERINGET	<ul style="list-style-type: none"> TUMKOU- CHEPANGANG
			PSIGIRIO	<ul style="list-style-type: none"> KASONKAU- KITALAPOSHO
5	SUPPLY OF PIPES	MNAGEI	PSIGIRIO	<ul style="list-style-type: none"> TOMKO KALYA
6	MAINTENANCE OF DAMS	KERINGET MNAGEI	CHEPTUYA TARTAR	<ul style="list-style-type: none"> KADOKONY DAM COFFE FACTORY DAM

B) AGRICULTURE AND LIVESTOCK PROJECTS

SN	PROJECTS	SUB LOCATION	PLACE/SITE
1	MAINTAINANCE OF CATTLE DIP	KISHAUNET	<ul style="list-style-type: none"> SUKUT (TAMBALAL) KISHAUNET CENTER LITYEI CENTER
		MNAGEI	<ul style="list-style-type: none"> TARTAR CATTLE DIP PSIGIRIO KAMUINO PSIGIRIO MURKWIJIT
		KIRINGET	<ul style="list-style-type: none"> CHEPTUY

			<ul style="list-style-type: none"> • KERINGET DIP • PSER DIP • CHEPTUYA DIP • LOKORNOI DIP
2	CONSTRUCTION OF CATTLE DIP	KERINGET	<ul style="list-style-type: none"> • MORTOME • AKIRIAMET
3	VACCINATION AGAINST(SIK,LOKOT,LOMULOKIO ETC)	ALL SUBLOCATIONS	
4	PROVISION OF ANIMAL BREEDS(SAHIWAL,GALLA,TOGGENBURG GOAT,DOPPER SHEEP AND POULTRY)	ALL SUBLOCATIONS	
5	CERTIFIED SEEDS(SUNGURA,DUMA,H614,H6213, H520)	ALL SUB LOCATIONS	
6	ONIONS, MANGO FRUITS TREES	TARTAR LOKORNOI MORTOME SUKUT KISHAUNET	<ul style="list-style-type: none"> • KALALIWA • LORKONOI • MORTOME • TAMBALAL • NANGORTUM

C) ENVIRONMENT AND FORESTRY PROJECTS

SN	PROJECT	LOCATION	SUBLOCATION	PLACE
1.	TREE NURSERIES	ALL LOCATIONS 1. MNAGEI 2. KISHAUNET 3. KERINGET	ALL 9 SUBLOCATIONS: 1.SUKUT 2.KISHAUNET 3.LITYEI 4. TARTAR 5. PSIGIRIO 6. KERINGET 7. CHEPTUYA 8. LOKURNOI 9. MORTOME	<ul style="list-style-type: none"> • LOKURNOI • TOTUM • KAMWOTUY PRY • KOTORUK • FACTORY • KAPLELACH KOROR • KATALAPOSHA (CHELELIO) • CHEPTUYA • MORTOME
2.	TREE NURSERY TUBES	IDENTIFIED GROUPS E.G., WOMEN GROUPS YOUTH GROUPS SILC GROUPS	ALL SUBLOCATIONS	<ul style="list-style-type: none"> • KOMOLEE • KAMUINO • KERINGET • LITYEI • KAPLELACH

				<ul style="list-style-type: none"> • KOROR
3.	CONSTRUCTION OF GABBION	KERINGET	MORTOME LORKURNOI	<ul style="list-style-type: none"> • MORTOME
		KISHAUNET	KISHAUNET SUKUT	<ul style="list-style-type: none"> • LOPATAL • MUKARET

14. RIWO WARD
PROJECT PRIORITIZATION HELD ON 29/07/2023 AT MTELO HALL
WATER PROJECTS

SN	PROJECTS	LOCATION	SITE
1.	BOREHOLE	KATIKOMOR	<ul style="list-style-type: none"> • KATIKOR CENTRE
		KANYARKWAT	<ul style="list-style-type: none"> • LOMONGIRO • NAPAWAI • CHEPTUMOT
		KAPCHEMKOT	<ul style="list-style-type: none"> • CHEPKOKOCH • KARON • KAKORURON PRY. • MARICHOR
		MISKWONY	<ul style="list-style-type: none"> • CHEPEGHIN, • KAPKECHA, TAKARIA
		KSEREWO	<ul style="list-style-type: none"> • KAMAYECH SEC. • SEREWO CENTRE • TUKUMWOK, MERIA • PRUKUT
		RIWO	<ul style="list-style-type: none"> • AMINITO • POOLE PRY • CHEPOTARAMA DISPENSARY, SES • SES • ARJABU
		EMBOASIS	<ul style="list-style-type: none"> • KOMOLKAPEI • PARIMON • KOPEMOI • YOTWO • LOKODONGIRO • NAKWANGAMOR
2.	IRRIGATION	SEREWO	<ul style="list-style-type: none"> • CHEPOKITARANY • PKOPOCH • NGORYEEL

		KANYARKWAT	<ul style="list-style-type: none"> • KARENGER • ATACHA
3.	PIPED WATER	EMBOASIS	<ul style="list-style-type: none"> • LOKODONGIRO • LOKATUKOI
		KANYARKWAT	<ul style="list-style-type: none"> • LOMONGIRO • KANYARKWAT • PRUNDA PRY. • ADRUKOIT • CHEPKEMEI
		KAPCHEMKOT	<ul style="list-style-type: none"> • NAKWANGAMORU CENTRE • KATUKUMWOK PRY. • KAPTARIN
		RIWO	<ul style="list-style-type: none"> • KONGELAI CENTRE • CHEPOTARAMA DISPENSARY
		SEREWOWO	<ul style="list-style-type: none"> • SEREWOWO PRY. • SEREWOWO HEALTH CENTRE
		MISKWONY	<ul style="list-style-type: none"> • MISKWONY PRY. • LOKNA PRY.
4.	WATER PAN/SUB-SURFACE DAM	KANYARKWAT	<ul style="list-style-type: none"> • KATIKOMOR • CHEPTUMOT
		KAPCHEMKOT	<ul style="list-style-type: none"> • LOBONGOTUM • LOKORON
		SEREWOWO	<ul style="list-style-type: none"> • KATUKAL
		RIWO	<ul style="list-style-type: none"> • KADONGEN-MOKONGEN • SES
		MISKWONY	<ul style="list-style-type: none"> • KATOPOTEN • KETIYAM • ROTUN • SITOYOWO • SITIT • CHEPKARERAT
		EMBOASIS	<ul style="list-style-type: none"> • PARIMON • KOMOLKAPEI • CHESAKAM • KOMOLKIPI • SILTA

AGRICULTURE AND LIVESTOCK PROJECTS

SN	PROJECT	LOCATION	SITE
----	---------	----------	------

1.	MASS VACCINATION <u>Diseases:</u> -PPR -LSD -CCP -S&G -ECF CBP NEWCASTLE	ENTIRE WARD	<ul style="list-style-type: none"> • KANYARKWET • SUBLOCATION • SEREWO • MISKWONY • KAPCHEMKOT • RIWO • EMBOASIS
2.	KNAPSACK SPRAYERS		<ul style="list-style-type: none"> • KAPCHEMKOT • SEREWO • RIWO • EMBOASIS • MISKWONY
3.	CATTLE DIPS	KANYARKWAT	<ul style="list-style-type: none"> • KATIKOMOR CENTRE • KANYARKWAT CENTRE • PRUNDA • AROT
		KAPCHEMKOT	<ul style="list-style-type: none"> • NAKWANGAMORU
		MISKWONY	<ul style="list-style-type: none"> • NATIRIRA • KOITUKUM
		EMBOASIS	<ul style="list-style-type: none"> • KATEMNYANG • KOPEMOI
		SEREWO	<ul style="list-style-type: none"> • MTEMBUR CENTRE
4.	CATTLE CRUSH	KAPCHEMKOT	<ul style="list-style-type: none"> • LOBONGOTUM • KAKORURON • AUSKIYON • SEKONION
		KANYARKWAT	<ul style="list-style-type: none"> • KANYARKWAT • PRUNDA • ATACHA • KATIKOMOR
		SEROWO	<ul style="list-style-type: none"> • KASARANI • CHEPKARAM • MTEMBUR • MERIESE • SANGAKAI
		RIWO	<ul style="list-style-type: none"> • KATAPODIN • LOKITEDEL • KALEMREKAI
		MISKWONY	<ul style="list-style-type: none"> • MORWO • SEIKWANG • KAPURWOK
		EMBOASIS	<ul style="list-style-type: none"> • MARCHA

			<ul style="list-style-type: none"> • KALEMNYANG • CHEMUMA • YOTWO
	PROVISION FOR MODERN BEE HIVES	ENTIREWARD	<ul style="list-style-type: none"> •
	CERTIFIED SEEDS(H6213,614,629,6210) pana seeds	ENTIRE WARD	
	PROVISION OF ANIMAL BREEDS(Sahiwal,dopper sheep,galla goat,poultry)	ENTIRE WARD	

ENVIROMENT AND FORESTRY PROJECTS

SN	PROJECTS	SUB LOCATION	PLACE/ SITE
	FRUIT SEEDLINGS	ENTIRE WARD	
	TREE NURSERIES	ENTIRE WARD	
	TREE PLANTING	ALL SCHOOLS IN THE WARD	KOPOCH SEREWO
	CONSTRUCTION OF GABIONS	SEREWO KANYARKWAT EMBOASIS MISKWONY RIWO	PRUKUT KAMAYECH MTEMBUR ATACHA PRUNDA YOTWO SESOI KARENGAMUKAT KETIYAM KATOPOTON KACHAMBILWA KAPKECHA CHEPANYINTA SONGWOT NGOROKOO CHELOKOTETWO CHEMAYOS KATUKUMWOK KAIPONU

15. SEKERR WARD:

PROJECTS PROPOSED DONE IN SIGOR KVDA CENTRE ON 12TH & 13TH JULY 2023

A) Climate Hazards with High Impact in the Ward

1. Drought
2. Pest and diseases
3. Landslides

B) Priority Areas and Proposed Climate Adaptation and Mitigation Projects

1) Water projects

- xviii) **Construction of Water Pans (10 number) at: Katembrion**
- xix) Chesakaram
- xx) Lamu nyeusi
- xxi) Sarmach
- xxii) Lochacha
- xxiii) Cheposanginy
- xxiv) Poghoi
- xxv) Sukuta

a) Irrigation-using Turkwel river and Muruny to supply water to Orwo and Sarmach sub-locations.

- i) Sumboywo river to supply irrigation Yas and Chopotwo areas.
- ii) Piping of water From Emboseker river to Chemakew.
- iii) Piping of water from Embosimotwo to areas of Mbara and Sengelel.
- iv) Drilling of borehole at Kambi-Karai and Poghoi.
- v) Establishment of livestock pasture at Orwo and Sarmach Sub-locations.

2) Environment and Forestry Projects

- i) Establishment of tree nurseries in every sub-county
- ii) Employment of forest guards to guard Mtelo and Chaichai forests
- iii) Plantation of trees (reafforestation) both the government land and institutions.
- iv) Promotion of Agroforestry Practices in farms
- v) Conservation of water catchment areas -Mt. Mtelo (water tower region in Sekerr ward)
- vi) Planting of trees on upper affected areas of:

- a) Mbara
- b) Chepkondol
- c) Parek
- d) Taloon
- vii) Community sensitization across the ward
- viii) Relocation of people from affected areas to avoid deaths especially during long rain between April – September

3) Agriculture /Livestock Projects for Climate Change Adaptation

- i) Animals vaccination across the ward
- ii) Employment of more extension officers for veterinaries more so at Sarmach and Karai
- iii) Community capacity building across all the locations, Sarmach, Marich and Chepkondol
- iv) Construction of cattle dips at:
 - a) Sarmach
 - b) Nasolot
 - c) Sostin
 - d) Mbara
 - e) Orwo
 - f) Chepkondol

C) CONFLICTS AND GENDER MAINSTREAMING

- Gender balance for trainings, women, youths, marginalized groups, people living with disability, elders must be represented.
- Uniting the communities in border areas through various peace trainings, development projects that can benefits both the communities, i.e border schools.
- Organizing tournament, sports and beauty contests at:
 - vi) Orwo
 - vii) Sarmach
 - viii) Nasolot
 - ix) Kambi- Karai
 - x) Lamu-nyeusi
- Building of border schools and churches at,

- v) Kambi-karai
- vi) Sarmach
- vii) Nasolot
- viii) Orwo

16. SIYOI WARD
PROJECT PRIORITIZATION HELD ON 29TH JULY 2023 AT MTELO HALL

WATER PROJECTS

SN	PROJECTS	SUB LOCATION	PLACE/SITE
	PIPED WATER	PARAYWA	<ul style="list-style-type: none"> • KAPSUMBEIYWO A&B • PARAYWA WATER PROJECT • LOTODO WATER DAM-SITOTWO-LOTEPA
		KAPCHILA	<ul style="list-style-type: none"> • TENDEREZA-BONDENI-KATUNG • LOMER-KORPUN • CHEMAS-SIKNIN • TOLELI-KAPKECHA
		SIYOI	<ul style="list-style-type: none"> • LOTODO DAM-LOTEPA-SITOTWO-SINENDET-KAPRECH-KAMARINY-SIYOI
		KAIBOS	<ul style="list-style-type: none"> • KANYONGIS-KAIBOS-MAKAYITKAPTOPOSWO
	BOREHOLE	KAPCHILA	<ul style="list-style-type: none"> • CHEPYOMET,KAPCHILA
		SIYOI	<ul style="list-style-type: none"> • KERENTET CENTRE • SIYOI CENTRE
		PARAYWA	<ul style="list-style-type: none"> • PARAYWA PRIMARY AND SECONDRY SCHOOL
		KAIBOS	<ul style="list-style-type: none"> • KAIBOS CENTRE • MAYAKIT (KAIBOS PRIMARY)
		KIPOKORINYA	<ul style="list-style-type: none"> • KAHAWA CENTRE
		TALAU	<ul style="list-style-type: none"> • TALAU CENTRE • TALAU SECONDARY
		KAPSURUM	<ul style="list-style-type: none"> • SINGOEI MWAROR
	WATER SPRING PROTECTION		<ul style="list-style-type: none"> • PARAYWA SPRING • TALAU CENTER • KAMARINY A • WANYONYI

			<ul style="list-style-type: none"> • KAIBOS • CHEPKOTI • MAINA SPRING • KAHAWA SPRING • SIYOI PRIMARY • TOMBULUU SPRING
--	--	--	---

AGRICULTURE AND LIVESTOCK PROJECTS

SN	PROJECTS	SUBLOCATION	PLACE/SITE
1	UPGRADING OF CATTLE DIPS	ENTIRE WARD	TALAU KAIBOS SIYOI KAPRECH PARAYWA KAPKORINYA KAPKECHA
2	VACCINATION OF LIVESTOCK (ECF, LSD, PDR ETC)	ENTIRE WARD	
3	PROVISION OF CERTIFIED SEEDS (MAIZE, ONIONS, TOMATOES TEA, COFFE, AVOCCADO)	ENTIRE WARD	
4	PROVISION OF ANIMAL BREEDS (DOOPER SHEEP, DAIRY CATTLE)	ENTIRE WARD	
5	POULTRY VACCINATION	ENTIRE WARD	
6	RABBIES VACINATION	ENTIRE WARD	
7	POULTRY FARMING	FOR WOMEN AND YOUTH IN THE ENTIRE WARD	

ENVIROMENT AND FORESTRY PROJECTS

SN	PROJECTS	SUBLOCATION	PLACE/SITE
1	ESTABLISHING TEE NURSERIES	ENTIRE WARD	IN ALL THE 58 VILLAGES
2	PLANTING OF TREES IN ALL PUBLIC INSTITUTION	ENTIRE WARD	
3	REAFORESTATION OF KAMATIRA FOREST		
4	PUBLIC SENSITAZATION ON MATTERS CLIMATE CHANGE	ENTIRE WARD	
5	CONSTRUTION OF LIGHTENING	TALAU KAIBOS	TALAU HILLS KAIBOS HILLS

	ARRESTORS	SIYOI KAPCHILA KAISAGAT KAPRECH PARAYWA	
--	------------------	---	--

17. SOOK WARD PROJECT PRIORITIZATION AT CHEPNYAL CATHOLIC CHURCH

WATER PROJECT

S/NO	PROJECTS	SUB-LOCATIONS	SITE
1	BOREHOLES	Chekomos	<ul style="list-style-type: none"> • Pokolyo • Sitier • Topno
		Psabai	<ul style="list-style-type: none"> • Ptoo • Korpu
		Tompul	<ul style="list-style-type: none"> • Chesitoi • Kapres • Ngarorya
		Kochar	<ul style="list-style-type: none"> • Sirpal • Kasepa • Mrterit • tokoroi
		Chepnyal	<ul style="list-style-type: none"> • kaparmonta, katimoril, tokwen • Kapkomolol, Cheptesok, Sro • Katow, Weko
		Mungit	<ul style="list-style-type: none"> • Klele • Cheposoronoi • Kapero • Maraka • Chemartas
		Tinder	<ul style="list-style-type: none"> • Cheyomat • Kapsawach • Perye • Womtoren • Kokwomosow
		Tamugh	<ul style="list-style-type: none"> • Kosikup • Toptolim

			<ul style="list-style-type: none"> • Kachumakinei • Chesakam • Sosion
,		Letwa	<ul style="list-style-type: none"> • Tonyirwo, Kalanga, Ptakach, Priro • Ptira • Letwa
		Kola	<ul style="list-style-type: none"> • Empokech, Miskwony, Kola • Kambaya, Cheptoch, Chepolol
2	PIPED WATER	Simat	<ul style="list-style-type: none"> ▪ From chesero - Palol ▪ From Kapkaner - Simat ▪ From Empororon to Kokwo Topkony ▪ From Emsewa- Cheptongo
		Kochar	<ul style="list-style-type: none"> ▪ From Empororon-Tokoroi ▪ From Enopogh-Kochar
		Psabai	<ul style="list-style-type: none"> ▪ From Chepogh- Sokitom-Sitier ▪ From Kapkiripoi-Tokisom ▪ From Empongaror-Korpu
		Chekomos	<ul style="list-style-type: none"> ▪ From pkorow- Topno ▪ From Enopogh- Kapyosha- Kamos
		Tompul	<ul style="list-style-type: none"> ▪ From Cheptukong- Lopisto ▪ From Cheptukong – Kapelus-Chemighon
		Chepnyal	<ul style="list-style-type: none"> ▪ From Chemirsi-Chepnyal
		Tamugh	<ul style="list-style-type: none"> ▪ From Psikin – Pcholpogh- Tamugh primary ▪ From Chesiron – Pturatamuga centre ▪ From Pkatam- Jerusalem- Angacha
		Kola	<ul style="list-style-type: none"> ▪ From Ghatyasesoy -Kisuyo
3	SUB-SURFACE DAM	Letwa	<ul style="list-style-type: none"> ▪ Letwa
		Simat	<ul style="list-style-type: none"> ▪ Kukat

AGRICULTURE AND LIVESTOCK PROJECTS

S/NO	PROJECTS	SUB-LOCATIONS	SITE
1	VACCINATION OF LIVESTOCK AGAINST GOATS(Losir, Loukoi,Lomoloko), AGAINST SHEEPS(Losir, Chepchang(blue tongue) AGAINST CATTLE (Ngoryan-FMD, Lomoloko-LSD, Lokit - ECF,Loukoi-CCBB)	Chekomos	<ul style="list-style-type: none"> ▪ Tompul ▪ Kochar ▪ Ptoo
		Chepnyal	<ul style="list-style-type: none"> ▪ Mungit

			<ul style="list-style-type: none"> ▪ Tinder ▪ Chepnyal
		Tamugh	<ul style="list-style-type: none"> ▪ Letwa ▪ Tamugh ▪ Kola ▪ Miskwony
2	DEWORMING OF LIVESTOCK	All locations	Entire ward
3	TICK CONTROL AND CATTLE DIP MAINTANANCE	Simst	Amsewa
		Tompul	Tompul
		Chekomos	<ul style="list-style-type: none"> ▪ Pkorow ▪ Embogh
		Chepnyal	Katimoril
		Mungit	Mongit
		Tamugh	Toptolim
		Psabai	<ul style="list-style-type: none"> ▪ Korpu ▪ Chepighin
		Kola	<ul style="list-style-type: none"> ▪ Cheptoch ▪ Miskwong ▪ pcholphogh
		Letwa	<ul style="list-style-type: none"> ▪ letwa ▪ priro
4	PROVISION OF KNAPSACKS SPRAYS(20L)ACCARICIDES	All sub-locations	Entire ward
5	PROVISION OF PASTURE SEEDS	All sub-locations	Entire ward
6	PROVISION OF BREEDING ANIMALS – <ul style="list-style-type: none"> • Boran, Sahiwal, Galla goats, • Dopper sheeps, Tugen bug 	All sub-locations	Entire ward
7	PROVISION OF POULTRY FARMING -ALL WOMEN GROUP AND YOUTHS	All sub-locations	Entire ward
8	IRRIGATION	Chekomos	Embohgh -Kochar
		Tompul	Cheptukong -Karomari
		Tamugh	Pcholphogh-chepolol
9	PROVISION OF CERTIFIED SEEDS <ul style="list-style-type: none"> • H6213, H6218, H614, H520, H614, H516, H6210, H629, KH500 • Ssungura, Duma, Tembo, Rosecoco beans, GLP2, Green grams K520, N27 Peas. 	All sub-locations	Entire ward

10	PROVISION OF MODERN BEE-HIVES AND TRAINING BEE KEEPING FARMERS (APICULTURE).	All sub-locations	Entire ward
11	FISH FARMING	Simat	Kokwotopkong
		Kochar	Kasepa
		Tompul	Tompul
		Chekomos	Embogh
12	PROVISION OF ONION SEEDS (RED PEROY SUPAYULE)	Chekomos	<ul style="list-style-type: none"> • Topno • Embogh • Sapai
		Tompul	<ul style="list-style-type: none"> • Kapelus • Tompul • Chesitol
		Kochar	Tokoroi
13	PROVISION OF SOIL TESTING KIT (SOIL PAL KIT)	All sub-locations	Entire ward

ENVIRONMENT AND FORESTRY

S/NO	PROJECTS	SUB-LOCATIONS	SITE
1	PROTECTION OF FOREST	Chepnyal	Sook forest
		Psabai	Mtelo forest
2	ESTABLISHMENT OF TREE NURSERIES	Every sub-location	Entire ward
3	PROVISION OF TREE SEEDLINGS TO ALL FARMERS	All sub-locations	Entire ward
4	LAND RECLAMATION(GABBIONS)	All sub-locations , Where appropriate	Entire ward- where appropriate
5	GAZZETMENT OF FORESTS	All sub-location	Entire ward

PROJECT	SUB-LOCATION	SITE
1. PIPED WATER	LETWA	1) TONIRANO 2) KAMUNGA 3) PITRACH 4) PIRRO 5) PITRA 6) LETWA
2. PIPED WATER	CHEPNTAL	1) CHEPTUKONG - LOPICTO 2) CHEPTUKONG - KAPALUS-CHEMUNGA 3) CHEPTUKONG - TAMPUL 4) CHEMUNGA - CHEPNTAL
	TAMUGH	1) PSIKIN - POKHOTOH 2) TAMUGH - POKHOTOH 3) CHEPTUKONG - PITURA 4) TAMUGH - KANTER 5) KANTER - TERUNGA 6) ANBACHA
	KOLA	1) GHATASEGOY - KISUTO 2) KISUTO - LETWA
SUB-SERVICE DAM	LETWA	LETWA
	SIMAT	KUKAT

PROJECT	SUB-LOCATION	SITE
BOREHOLE	CHEPNTAL	1) KAPARMONTA 2) KATIMORIL 3) KAKHON 4) KAPKONHOL 5) CHEPTOKOK 6) SRO 7) KATOW 8) WEKO
"	MUNGIT	1) KLELE 2) CHEPOSOLAI 3) KAPERO 4) NARAKA 5) CHEMARTAS
"	TINDAR	1) CHEPTOMAT 2) KAPAMACH 3) PERTE 4) WOKTOKEN 5) KOKWOMBOSOW
	TAMUGH	1) KOSIKUP 2) TOPOLIM 3) KACHIMAKINER 4) CHESAKAMP

PROJECT PRIORITIZATION
SOOK WARD - 26/07/2023
AT CATHOLI CHURCH
WATER PROJECT

PROJECT	SUB-LOCATION	LOCATION/SITE
1. BOREHOLE	SIMAT CHEWOMOS	1) POKHOTO 2) SITIER 3) TOPNO
	PSABAT	1) PTOO 2) KOKPU
	TAMPUL	1) CHESITOI 2) KAKRES 3) NGARORTA
	KOCHAR	1) SIRPAL 2) KASEPA 3) METERIT 4) TOKOROM



INFINIX
AI CAMERA

S/NO	PROJECT	SUB-LOCATION	SITE
7.	IRRIGATION	CHEKOMOS	EMBUGH-KOCHAR
		TOMPUL	CHEPTUKONG-KACHANG
		TAMUGH	PCHORPOH-CHEPOLOL
8	CERTIFIED SEEDS H6213, H6210, H6210 H6218, H614, H629 H624, H516, KHS00 Sungum, Duma, Tembe ROSE COCO BEANS JANGUP GREEN GRAMS K520, N27 PEAS		
9	PROVISION OF MODERN BEE-HIVES AND TRAINING BEE KEEPING FARMERS (APICULTURE)		
10	FISH FARMING	EMBUGH CHEKOMOS SIMAT KOCHAR TOMPUL	EMBUGH KOHWOOTOPKONT KASEPA TOMPUL
11	PROVISION OF Onion Seeds (Red Penny Superjeda)	Chekomos Tompul kochar	Tompul - Embugh - Simat - Kasepa - Tompul - Cheptukong TOKORO
12	PROVISION OF Soil testing kit (Soil test kit)	Entire ward	

S/NO	PROJECT	SUB-LOCATION	SITE
	TICK CONTROL	LETWAAP	LETWA PRILO
		KOLA	CHEPTUKONG KUSKUNONT CHEPTUKONG
	PROVISION OF INAPSAKS SPRAYS (20L) + ACCARICIDES	ENTIRE WARD	
4	PROVISION OF PASTURES SEEDS	ENTIRE WARD	
5	PROVISION OF BREEDING ANIMALS	ENTIRE WARD (M) BORM (M) SATHWAL (M) GALLA GOATS (W) DOPPER SHEEP (V) TOGEN BUB	
6	PROVISION OF POULTRY FARMING	ENTIRE ENTIRE WARD TOUTH AND WOMEN	
7	IRRIGATION		

S/NO	PROJECT	SUB-LOCATION	SITE
1	VACCINATION OF BIRDS (M) LAKA (PPR) (M) LAKA (CCPP) (M) LAKA (CCPP) (M) LAKA (CCPP) (M) LAKA (CCPP)	CHEKOMOS CHEPTUKONG TAMUGH	TOMPUL, KOCHAR, PCHORPOH MOUNT, TINDA, CHEPTUKONG LETWA, TAMUGH, MUKUNONT/KOLA
2	PROVISION OF SEEDS (M) LAKA (PPR) (M) LAKA (CCPP) (M) LAKA (CCPP) (M) LAKA (CCPP)	CHEKOMOS CHEPTUKONG TAMUGH	TOMPUL, KOCHAR, PCHORPOH MOUNT, TINDA, CHEPTUKONG LETWA, TAMUGH, MUKUNONT/KOLA
3	CATTLE (M) LAKA (PPR) (M) LAKA (CCPP) (M) LAKA (CCPP) (M) LAKA (CCPP)	CHEKOMOS CHEPTUKONG TAMUGH	TOMPUL, KOCHAR, PCHORPOH MOUNT, TINDA, CHEPTUKONG LETWA, TAMUGH, MUKUNONT/KOLA
4	DENDRARIUM OF SHEEP GOATS, LITTLE AND POLITE		
5	TICK CONTROL (M) LAKA (PPR) (M) LAKA (CCPP) (M) LAKA (CCPP) (M) LAKA (CCPP)	SIMAT TOMPUL CHEKOMOS PSARAY CHEPTUKONG MOUNT TAMUGH	ADISEWA TOMPUL PKORONG, ENISAWA D. KORDU D. CHEPTUKONG KATINDA MOUNT TOMPUL

S/NO	PROJECT	SUB-LOCATION	SITE
1	PROVISION OF SEEDS		
2	TR		
3	PA TH SE		
4	CO OF		
5	GAZZ FO		

18. SUAM WARD PROJECT PRIORITIZATION AT V.T.C ON 25TH JULY, 2023

WATER PROJECTS

S/NO	PROJECTS	SUB-LOCATIONS	SITE
1	BOREHOLES	Asilong	-Chepo Asacha -Solongen border -Kache(Riney) junction
		Ngengechwo	Lotelemoi
		Kachelipa	Lopuseokou

		Kaaron	-Kaaron junction centre - Kao
		Nakuyen	-Nakuyen centre -Motany
		Kopulio	-Chepotupen dam -Chepolow -Amodoyon
		Kanyerus	Morlem
2	SUB-SURFACE DAMS/SAND DAMS	Nakuyon	Nakasepa
		Kachelipa	Lopushenikou
		Kopulio	Kaile
		Asilong	Shongen
		Ngeengechwo	-Kalas -Chesukurio
		Kanyerus	Loltapou
3	WATER PANS	Nakuyen	Motuny
		Kopulio	-Cherelio -Koropa Menyon
4	SILTATION	Kopulio	Moruongar
		Nakuyon	-Nakuyen -Nguyakwakou -Kosia
		Kanyerus	Ngeengech
		Kaaron	Kanyigeny
		Kachelipa	Sale yard
		Ngeengechwa	Kangolenyang
5	GRAVITATIONAL WATER	Kanyerus	Ngeengech

AGRICULTURE AND LIVESTOCK PROJECTS

S/NO	PROJECTS	SUB-LOCATIONS	SITE
1	PURCHASES OF DROUGHT AND RESISTANT ANIMALS(Galla goats, Gamels, Poultry)	All sub-locations (7)	Entire ward
2	PURCHASE OF DROUGHT RESISTANT SEEDS(Duma, PH04, Sorghum, Millet, Cassava, Green gram)	All sub-locations(7)	Entire ward
3	ANIMAL VACCINATIOJN	All sub-locations	Entire ward
4	CATTLE CRUSH/AKOROS(METALLIC)	Nakuyen	Alelia
		Kopulio	Moruongar
		Asilong	Chemworor
		Kanyerus	-Kapetakirei - Amomwor

		Ngengechwo	Katuperot
4	ESTABLISHMENT OF PASTURE(GRASS)	Ngengechwo	Hold ground
5	SUPPORTING FARMERS WITH GRASS SEEDS	All sub-locations (7)	Entire ward
6	UPGADING OF WATER PUMPS	All sub-locations(7)	Entire ward
7	REHABILITATION OF KANYERUS CATTLE DIP	Kanyerus	Kosowil
		Kaaron	Kaaron
8	EXPANSION AND FANCING OF KACHELIPA SALE YARD	kachelipa	Kachelipa sale yard
9	CONSTRUCTION OF NEW SALE YARD	Nakuyen	Nakuyen centre
		Kopulio	Moruongar centre
		Kanyerus	Morlem centre

ENVIRONMENT AND FORESTRY

S/NO	PROJECTS	SUB-LOCATIONS	SITE
1	MANGO PLANTATION	Kanyerus	Intake
		Kachelipa	Bridge site
		All river suam	Entire ward
2	ESTABLISHMENT OF TREE NURSERIES	Kanyerus	Kanyerus centre
		Kaaron	River site
		Kachelipa	Forest
		Kapulio	Tandapos River Suam
3	LAND RECLAMATION/GABBIONS	Kachelipa	-Shabaa -Sangakai
		Kopulio	Chepolow
		Ngengechwo	-Near River Suam -Menjol
		Nakuyon	Nakasepa

SUM WOOD PROJECTS PRIORITIES

1. Water Projects

PROJECTS	Sublocations	Locations
Bushholes	Asilong - Kachetkinay Junctions	- Swamp Location -
	ASILONG	Kachetkinay Junction - Serangen border - Serangen border - Chepo Asacha. - Lotobomay
	Ngengechwo	- Lotobomay
	Kacheliba	- Lopocionkodu
	Karon	- Kac - Karon Junction Center
	Nakuyen	- Nakuyen Center - Motany
1	Kopuhio	- Chepotupen elan - Chepotupen - Anole yon
	Kanyen	- Motany

Water Project SUM WOOD

Projects 1. Subservice dam

2. Locations

Nakuyen	- Nakufepa
Kacheliba	- Lopuchemika
Kopuhio	- Kaita
Asilong	- Shorogen
Ngengechwo	- Kala S
	- Chasakima
Kanyen	- Lotapoli

2. Water Pans

Nakuyen	- Motany
Kopuhio	- Chereho
	- Koro pa meyo

Desire

Silabisi

Kopuhio	- Morungar
Nakuyen	- Nakuyen
	- Kanyen
	- Kaita
Kanyen	- Kengech
Karon	- Kanyen
Kacheliba	- Sale yand
Ngengechwo	- Kanyen

gravitational water Kanyen → Ngengech

2024 MAPS PROJECT PRIORITIES

INFINIX
AI CAMERA

ENVIRONMENT & Forest		
PROJECTS	SUB-LOCATION	LOCATION
1. Planting of trees	Kanyerus	In lake
"	Kicheleba	Bridge site
Mangoes	along the River Suam	entire ward
2. Establish of tree nursery	Kanyerus	Kanyerus center
	Karon	River site
	Kicheleba	forest
	Kopchiu	Handapa's river side
3. Established of gabillions	Kicheleba	Shabaa
	Kopchiu	Sungakai
	Ngegechur	chipolow
	Nakuyen	Near River Suam
	Ngegechur	Nakasepa
	Ngegechur	Menjoi
Sale yard Expansion & Fencing	Kicheleba	Kicheleba sale yard
Construction of a New Sale yard	Nakuyen	Nakuyen center
	Kopchiu	Morungar center
	Kanyerus	Morungar center
Rehabilitation of Kanyerus cattle	Kanyerus	Kosobili
	Karon	Karon

Agriculture & Livestock		
PROJECTS	Sublocation	village
1. Purchase of drought resistant animals e.g. goats, camels, Poultry	7 s/location	entire ward.
2. Purchase of drought resistant seeds e.g. Duma, Sorghum, Millet, Cassava, green gram	7 s/location	entire ward
Animals vaccination	7 s/location	entire ward
3. Crushers metal	Nakuyen	Aleli
	Kopchiu	Chapotupen
	Asilong	Morungar
	Kanyerus	Chenw-er
	Ngegechur	Anomwo
		Kapetakiner
		Kapetakiner
		Kapetakiner
4. Planting of grass	Ngegechur	Holohy ground.
Purchase of grass feeding	All Farmers	
Purchase of generators for water pumps	To all s/location	entire ward

19. TAPACH WARD WATER PROJECT PRIORITIZATION AT DCC'S OFFICE ON 29TH JULY, 2023

WATER PROJECTS

S/NO	PROJECTS	SUB-LOCATION	SITE
1	KAMOLOKON WATER PROJECT	Kamelei	<ul style="list-style-type: none"> Kamolokon -Kaporowo- Kapushien- Kamelei
		Sopowen	<ul style="list-style-type: none"> Kamolokon-Kamelei-Sopowen-Kaltit
		Tapach	<ul style="list-style-type: none"> Kamolokon -Kamelei-Sopowen-Tapach
		Tangasia	<ul style="list-style-type: none"> Kamolokon-Tapach-Ptop-Sikowo
		Kokwopsis	<ul style="list-style-type: none"> Kamolokon -Chepungung-Kokwopsi-Pchichinai-Chepkesei-Arusket
		Nyarkulian	<ul style="list-style-type: none"> Kamolokon- Kokwopsis- Lulwoi- Nyarkulian- Tomuswo-Kokunur Emkokon -Karelachon-Kokworii
		Kale	<ul style="list-style-type: none"> Kamolokon- Tomuswo- Cheptapesia- Kachepurkong-Kondo pilet- Mwotot-Kapchkar Kaachombol-Tororo Emkaghit-Kapomo
		Nyarpat	<ul style="list-style-type: none"> Kamolokon- Kapchikar -Sekution-Pchotoy-Pilil Ksiran -Kaptukony-Chepoywo Kapilat-Torion Kapilat-Kokwomron-Emsosion-Nyarpat
		Chongis	<ul style="list-style-type: none"> Chebon-Kamrmir- Kipawis- Losa-Chongis
		Kwokwopsis	<ul style="list-style-type: none"> Chepon-Chepungung-Kokwopsis
		Tangasia	<ul style="list-style-type: none"> Malambiy-Kapsentui-Ptalum-Sikowo Sengerwo-Chepchaghai-Psero-Kapkimuny-Kakress
		Chebon	<ul style="list-style-type: none"> Ptarakon -Kitakes-Ksapu-Telo-Kapchesich-
2	BOREHOLES	Tapach	<ul style="list-style-type: none"> Tapach primary
		Sopowen	<ul style="list-style-type: none"> Sopowen primary
		Kokwopsis	<ul style="list-style-type: none"> Kokwopsis primary
		Kacherian	<ul style="list-style-type: none"> Sekution primary school and secondary school.
		Nyarkulian	<ul style="list-style-type: none"> Tomuswo primary, Cheptapesia, Cheghopon,

		Tangasia	<ul style="list-style-type: none"> • Ptop primary and secondary school.
		Chebon	<ul style="list-style-type: none"> • Sina primary/ • secondary school, • Kapchesich primary, • Telo primary, • Sukonu primary.
		Sina	<ul style="list-style-type: none"> • Kaporowo primary
		Kale	<ul style="list-style-type: none"> • Kapchikar primary • Kachepurkong primary
		Nyarpat	<ul style="list-style-type: none"> • Koporoch primary • Pilil primary • Pchotoy primary
3	PROVISION OF WATER TANKS(10000L) IN EVERY INSTITUTION	ALL SUB-LOCATIONS	ENTIRE WARD

AGRICULTURE AND LIVESTOCK PROJECTS

S/NO	PROJECTS	SUB-LOCATIONS	SITE
1	CATTLE DIPS	Kamelei	<ul style="list-style-type: none"> • Pstanu and Kamelei
		Sopowen	<ul style="list-style-type: none"> • Sopowen centre and Kaltit
		Tapach	<ul style="list-style-type: none"> • Chebon and Sengerwo
		Kokwopsis	<ul style="list-style-type: none"> • Chepungung
		Nyarkulian	<ul style="list-style-type: none"> • Karelachon, Cheptapesia,
		Chongis	<ul style="list-style-type: none"> • Kaipawis , Chongis
		Kale	<ul style="list-style-type: none"> • Tororo
		Kachoria	<ul style="list-style-type: none"> • Sekution • Pilil • Pchotoy
		Tangasia	<ul style="list-style-type: none"> • Ptarakon • Ptalum
		Sina	<ul style="list-style-type: none"> • Tondwo
		Chebon	<ul style="list-style-type: none"> • Sina
2	PROVISION OF ACCARICIDES (18 CATTLE DIPS(4320L per Yr),6 SHEEP DIPS(600L Per Yr)	All sub-locations	Entire ward
3	PROVISION OF HIGH BREEDS	All sub-	Entire ward

	<ul style="list-style-type: none"> BULLS(Fresian,Guernsey, Arshia, Jersey) SHEEP (Rams,Dopper) 	locations	
4	VACCINATION (Disease control) <ul style="list-style-type: none"> ECF, FMD, BQ,LSD, New castle diseases (poultry) 	All sub-locations	Entire wards
5	DERWORMING	All sub-locations	Entire ward
6	CERTIFIED SEEDS OF POTATOES(Shangi)	All sub-location	Entire ward
7	FUNGICIDES	All sub-locations	Entire ward
8	POTATOES COOLING PLANT	<ul style="list-style-type: none"> Nyarkulian Tapach Kamelei Ptop Tangasia Kapchikar Kokwopsis Sopowen Kale 	Part of ward
9	PROVISION OF FERTILIZERS	All sub-locations	Entire ward
10	PROVISION OF HARZE OVACADO AND FUAATE OVOCADO, MANGO, ORANGES, LEMON,APPLE MANGO	<ul style="list-style-type: none"> Tangasia Sina Nyarpat Kale Ptop Chongis 	Part of the ward
11	CERTISFIED SEEDS OF MAIZE, MILLET, SORGUM ,CASAVA, SWEET POTATOES, BULB ONIONS(maize - H614,H6213,H6210,H629,H6218,DUMA,SUNGURA,TEMBO PANA)	<ul style="list-style-type: none"> Nyarpat Sina Kale Nyarkulian Chebon Tangasia Chongis 	Part of the ward
12	ESTABLISHMENT OF FRUITS TREE NURSERIES	<ul style="list-style-type: none"> Chemolo Nyarpat Chongis 	Part of the ward

ENVIRONMENT AND FORESTRY PROJECTS

S/NO	PROJECTS	SUB-LOCATIONS	SITE
1	PROTECTION OF GAZZETTED FORESTS <ul style="list-style-type: none"> Lelan forest Penon pit Forrest 	Part of sub-locations	Entire ward

	<ul style="list-style-type: none"> • Tangashia forest N/B: Recruitment of forest Guards and Forest Enforcers N/B: Evacuation of invaders from government forests		
2	CREATING OF AWARENESS <ul style="list-style-type: none"> • Kapushien • Tangasia • Kamelei • Tapach • Nyarkulian • Sopowen • Kokwopsis • Chongis • Koipawis • Ptop 	Part of sub-locations	Entire ward
3	ESTABLISHMENT OF TREE NURSERIES		

20. WEI-WEI PROJECTS PRIORITIZATION 11TH JULY, 2023 AT KVDA CENTRE -SIGOR

Wei-Wei ward has identified three main hazards affecting there ward namely:

1. Drought
2. Floods
3. Landslides

A) WATER PROJECTS

- a) Restoration of previous water farrows in, (Ipeet, Sangat-Korellach, Katugh-Ptokuo, Mrel (Endogh-Tamkal), Ngotor-Poroo, Nyarpat-Kapkis, Silta, Chemorkos, Sikarrot, Cheptara, Kopulwo-Ghumpogh, Kangalan and Wakor Furrows)
- b) Piped water to the community (Kaptilowo-Paroo, Enoo-Kasikoi-Ptokou, Sikarot-Marich, Erel-Cheptongoghio-Sigor, Erel-Kokwoptondwo-Ipeet, Tororo-Cheptesok-Ipeet-Sigor, Ksiyo-Cheptara).
- c) Drilling boreholes for clean water using solar panels in Sonjiro, Korellach, Kosa, Atarel, Karapkel, Poto, Wakor, Cheptongoghio, Kasma, Chepkukui.
- d) Building of dams and check dams in Korellach, Karapkel, Runo, Chepkukui, Cheptongoghio.
- e) Protection of water catchment areas in Muino escarpments and hills and Saw-Saw.

B) FORESTRY PROJECTS

- a) Having tree nurseries in al the 14 sublocation in Wei-Wei ward.
- b) Employing forest guards in Kamakolokon, Saw-Saw, Emporugut forests
- c) Planting of trees in water catchment areas and along River Wei-wei and along Kaporu River tributaries.
- d) Support community trees nurseries with tools and equipment such as Water- cans, Wheelbarrows, and Potting Tubes in the 14 sub-locations (Korellach, Sangat, Ptokou, Takar, Karapogh, Solion, Ptalam, Kitoyo, Nyarpat, Wakor, Soka, Yawyaw, Too Sikiryo, Kokwotendwo)

C) AGRICULTURE PROJECTS

- a) Improve the existing breeds of Goats, Cows, and Chicken in the entire ward
- b) Building gabions and terraces along the sloppy lands and areas affected by soil erosion and lands slides in Karapogh and Ptalam Sub-locations in Munio to improve land productivity and bring more land into agricultural use.
- c) Purchasing pipes and water pumps to residents of Wei-Wei to draw water from river Muruny to Seretion, Sosion, Narkumo, Dungdung, Chewarany for irrigation.
- d) Provision of artificial insemination services for cows of the residents of Wei-Wei ward.
- e) Buying of Camels to residents of Korellach sub location.
- f) Purchasing and distribution of animal feeds in dry areas of Korellach, Sangat, Ptokuo, Takar, Yaw- Yaw, Soka and Wakor Sub-locations.
- g) Purchasing and distribution of pasture seeds to farmers in the entire Ward.
- h) Building and restoration of cattle dips in every sub-location.

CONFLICT SENSITIVITY AND GENDER MAINSTREAMING CONSIDERATIONS

- a) Gender balance should be at fore front in issues of climate change.
- b) The minority and vulnerable should be considered first for job opportunities and asset distribution.
- c) Conflict assessment should be included in every project that is initiated.

ANNEX 3. WEST POKOT COUNTY CLIMATE CHANGE ANNUAL DEVELOPMENT PLAN AND FLLOCA PROGRAMME 2023-2024



REPUBLIC OF KENYA
THE NATIONAL TREASURY AND PLANNING
CHANGE UNIT
Harambee Avenue, Treasury Building,
KAPENGURIA
P.O. Box 30007-00100
climatechangeunit@westpokot.go.ke
NAIROBI

WEST POKOT COUNTY
CLIMATE

P.O. BOX 222 – 30600

Email:

Website: www.westpokot.go.ke



FINANCING LOCALLY-LED CLIMATE ACTION PROGRAM CLIMATE CHANGE INSTITUTIONAL SUPPORT (CCIS) AND CLIMATE CHANGE RESILIENCE INVESTMENTS (CCRI) PLAN AND BUDGET FOR FY 2023-2024

Department: Department of Water, Environment, Natural Resources and Climate Change

Vision: A clean, healthy, safe and sustainable water, environment, natural resource management.

Mission: Promote sustainable utilization of water, environment and natural resources management while addressing impacts of climate change for socio-

economic development

Climate Change Unit Specific Goal(s): Enhanced adaptive and resilience to climate change impacts and increased low carbon development pathway

Climate Change Unit Objectives, Priorities and Strategies

Programme	Objectives	Sub Sector Strategic Priorities
	To enhance	▪ Mainstream climate change in all sectors.

1. Financing- Locally-Led Climate Action- County Climate Change Institutional Support (FLLoCA-CCIS)	adaptive capacity and resilience to climate change, and promote low carbon development pathway.	<ul style="list-style-type: none"> Integration of County Climate Change Action Plan into National Climate Change Action Plan Sensitize and Capacity build climate change institutions-CCU, CCCCC, WCCPCs. Community sensitization on climate change through quarterly local radios and physical meetings/workshops Identify, Prioritize and Implement Climate Change Resilience/Adaptation and Mitigation Projects/Investments in every with Ward Climate Change Planning Committees Strengthen ecosystems protection from degradation. Engagement of Cabinet County Assembly, Civil Society organizations, Private Sector, and Community, Capacity building of Climate Change Unit Staff in recognized institutions Celebration and Participation in International, National, Conferences, Summits Meetings on Environment and Climate Change Matters Preparation and review of climate change Plans/Policies/Acts/Financing Strategies/Resource Mobilization Funding Concept Notes/Proposals Publication of County Climate Change Policies, Bills/Acts, and Regulations Reporting on NCCAP 2023-2027 Workshops for County Climate Change Plans/Policies/Bills/Acts Equipping of CCU Office Uploading County Climate Change Activities in County Website Benchmarking and Experience Sharing Professional / Consultancy Services Costs Enhance capacity of Climate Change Unit Staff Engagement on Ward climate change Planning Committees on Climate change Resilience Investments priorities water, agriculture and livestock, environment and forestry Preparation of Climate Change Quarterly and Annual Reports Monitoring and Evaluation (M&E) of County Climate Change Actions and investments Environmental and Social Safeguards Plans and Grievance Redress Mechanisms in Place Audits, Annual Performance Assessment and Annual Satisfaction Survey Implement Ward Specific Projects as proposed by Members of county Assembly Audits, Annual Performance Assessment and Annual Satisfaction Survey
2. General Administration Costs for Climate Change Resilience Investments		
3. Financing-Locally- Led Climate Action-Climate Change Resilience Investments (FLLoCA-CCRI)		

Programme1: Climate Change Institutional Support (CCIS)

Sub Programme	Key Outputs	Key performance indicators	Planned Targets	Resource Requirement (Kshs-Millions)	
				CG/West Pokot	FLLoCA
2.1: Financing Locally-Led Climate Action (FLLoCA) County Institutional Support (CCIS) and Climate Change Resilience Investments (CCRI)	Engagement of Cabinet on County Climate Change Agendas	Cabinet Approval Minutes	2	0.15	0.15
		Cabinet Approval Minutes	2	0.15	0.15
		Cabinet Approval Minutes	1	0.07	0.065
		Payment Vouchers and Imprests	2	0.15	0.15
		Approval Letters/Minutes	1	0.03	0.035
	Engagement of County Assembly	No. of sensitization Meetings	2	0.24	0.23
		No. of Workshops on Climate Change Bill/Act	2	0.24	0.23
	Sensitization Meetings/workshops/Seminars for County Climate Change Coordination Committee (CCCCC)	No. of Sensitization Meetings for CCCCC	2	0.1	0.1
		No. of CCCC Quarterly meetings held	4	0.14	0.13
	Sensitization/Capacity building of Ward Climate Change Planning Committees (WCCPCs) and Community	No. of Quarterly Meetings for WCCPCs	80	1.1	1.05
		No. of Days for Consolidation of CCRI investments	3	0.741	0.165
		No. of meetings held on mapping CSOs	2	0.0	0.065
	Mapping of Climate Change Civil Society Organizations in the County	No. of key stakeholders meetings held on County Climate Change Activities	1	0.07	0.065
		No. of Quarterly reports from CSOs	4	Nil	Nil
		No. of CCU Planning and Progress meetings	6	0.17	0.165
	Climate Change Unit Staff Meetings, Workshops, Seminars	No. of Virtual Meetings attended	-	0.01	0.01
		Meetings with Development Partners	-	0.01	0.015
		No. of Days Environmental and Climate Change days Commemorated	14	0.5	0.5
	International/National days Celebrations/ Climate Summits/Weeks/Summits/Regional	No. of Conferences, Summits, Climate	6	1.767	0.931

	Workshops /Meetings/ Conferences	Change Parties attended			
	Development of County Climate Change Plans/Policies/Acts/Financing Strategies/Resource Mobilization Funding Concept Notes/Proposals	No. of Action Plans	21	0.17	0.165
		No. of Plans	2	0.2	0.2
		No. of Meetings held for drafting Climate Change Bill, 2024	3	0.35	0.325
		No. of Meetings held for drafting County Forestry Policy, 2024	4	0.02	0.03
		No. of Meetings held for drafting County Forestry Bill, 2024	4	0.07	0.065
		No. of Meetings held for drafting County Climate Change Financing Strategy	3	0.07	0.065
		No. of Climate Change Concept Notes/Funding Proposals Written	2	0.1	0.1
		No. of Meetings held on development of County Climate Information Services Plan	2	0.14	0.13
	Review of County Climate Change Policies and Acts	County Climate Change Policy Reviewed	1	0.17	0.165
		West Pokot County Climate Change Financing Policy reviewed	1	0.17	0.165
		West Pokot County Climate Change Fund Act, 2021 reviewed and amended	1	0.3	0.25
	Quarterly Dissemination of Climate Information through radio stations	No. of quarterly radio talks held	4	0.07	0.065
	CIS and core advisory development during long rains and short rains		2	0.02	
	Publication of County Climate Change Policies, Bills/Acts, and Regulations	No. of Policies, Acts	5	0.17	0.165
	Public engagement on Ward climate change Resilience Investments	Annual public forum held in every sub-county	6	0.4	0.4
	Preparation of Climate Change Procurement plans, Quarterly and Annual Reports	Quarterly /Annual County Climate Reports	1	0.14	0.13
		Financial Progress Reports	1	0.02	0.015
		CCU Procurement Plan(s) in place	1	0.02	0.015

		No. of Meetings	3	0.5	0.5
	Validation Workshops for County Climate Change Plans/Policies/Bills	No. of Validation Workshops	2	0.14	0.13
	Equipping of CCU Office	Items purchased for CCU Office	No. of CCU assets purchased/procured	0.35	0.325
		Weather Station within CCU Office	1	0.07	0.065
		Internet Connection in CCU Office	1	0.03	0.035
	Training of CCU Staff in recognized institutions relevant to County Climate Change Agenda	No. of CCU Staff Trained	11	0.07	0.825
		No. of Kobotool & ODK Trainings/ Workshops for CCU Officers	2	0.42	0.4
	Monitoring and Evaluation (M&E) of County Climate Change Actions	CCU Quarterly Reports	4	0.03	0.035
	Environmental and Social Safeguards Plans	No. of climate Change Investments screened against adverse environmental and Social impacts	- Project based	0.07	0.065
		No. of environmental and social management plans prepared	Project based	0.07	0.065
		Grievance Redress Mechanism System in Place	1	0.07	0.065
	Upload County Climate Change Activities in County Website	No. of Times of Uploading County Climate Change Actions into County Website	4	0.01	0.025
	Benchmarking and Experience Sharing with other counties	Benchmarking/Experience Sharing visits	3	0.01	0.015
	Printing of dressing materials for CCU and climate Change events	No. of dressing materials purchased/procured	1000	0.3	0.3
	Utilities Supplies and Services	No. of times Gas is purchased	3	0.17	0.165
		Telephone And Communication Expenses for three key CCU Officers	Lumpsum	0.003	0.0035
		Postage and Courier Services	Lumpsum	0.03	0.035
	Office and General Supplies and Services	Supplies and Accessories for Computers and Printers	Lumpsum	0.003	0.0035
		Cleaning materials	Lumpsum	0.01	0.01
		Electricity and Water Expenses	Lumpsum	0.007	0.0065
	Fuel and Oils	Payment Vouchers	Litres of Fuel and	0.15	0.35

			Oils purchased		
	Hospitality Supplies and Services	Payment Receipts/Vouchers	Lumpsum	0.1	0.1
	Routine Maintenance - Vehicles and Other Transport Equipment	Payment Receipts	Lumpsum	0.84	0.78
	Printing and Stationery	Payment Vouchers	Lumpsum	0.07	0.065
	Professional / Consultancy Services Costs	Consultancy services	Lumpsum	0.17	0.165
	Audits	No. of internal audit reports validated	1	0.003	0.0035
		External Annual Audit (Dec 2023) for FY 2022/2023	1	0.003	0.0035
		Environmental and Social Audits undertaken	1	0.01	0.01
	Annual Performance Assessment (APAs)	No. of APAs done	1	0.01	0.01
	Annual Satisfaction Survey (ASS) on county climate change actions	No. of ASS done	1	0.14	0.13
				12M	11M

Programme2: General Administration Costs for Climate Change Institutional Support and Climate Change Resilience Investments

Key Outputs	Approved Budget
Field Allowance	7,920,000
Project Supervision Costs (Allowances)	7,920,000
Daily Sub-subsistence Allowance (DSA)	6,280,000
Travel Costs	2,640,000
Accommodation Allowances	2,640,000
	27,400,000

Programme 3: Climate Change Resilience Investments (CCRI)

Aim: To encourage and financially facilitate the county to implement locally led climate change investments so as to build resilience and adaptative capacity of the community and individual households to climate change shocks and stressors

Sub Programme	Key Outputs	Key performance indicators	Planned Targets FY 2023-2024	Resource Requirement (Kshs-Millions)	
				CG-West Pokot (CCCCF)	FLLoCA (CCRI)
Sub-Programme 3.1: Water	Boreholes drilled test-pumped Capped, solar powered and smart taps installed in all wards	No. of Boreholes drilled test-pumped and Pump installed	Wards	23,400,000	41,648,000
	Rehabilitation of existing water supply schemes	No. of existing water supply schemes Rehabilitated	Wards		
	Construction of Piped Water supply schemes	No. of rural Water supply scheme constructed	Wards		
		No. of water kiosks constructed	Wards		
	Water Springs protected	No. of Water springs protected	Wards		
	Water tanks supplied to Schools and community water points	No. of Institutions supplied with water tanks	Wards		
3.2: Environment and Forestry	Greening of Schools	No. of schools greened	Institutions	11,600,000	36,168,000
	Supporting and establishment of Tree Nurseries	No. of tree nurseries supported	Four Sub-counties		
	Construction of gabions	No. of Gabions Constructed	Wards		
	Installation of improved cook stoves / jikos in vulnerable households				
	Modern beehives supplied to farmers	No. of modern beehives distributed to farmers	Wards		
	Survey and beaconing of county forests				
	Construction of rangers houses inn county forests				
	Supply of potting tubes to women, People with disabilities and youth groups engaged in Tree Nursery enterprise	Kilograms of potting tubes distributed to women and youth groups	20 Wards		
	Lightning arrestors constructed	No. of lightning arrestors installed	20 Wards		
	Tree Planting in Maral, Mt.Mtelo Forest, Ketiam Forest, Kamkeyon Hill, Choto Hill, Topukwo Hill, Penon forests	No. of tree seedlings planted in Hill tops and forests countywide	6 Wards		
3.3: Agriculture and Livestock	Livestock Breeds (Sahiwal, Galla goats Doper Seep, Somali Camels, Improved chicken)	No. of livestock breeds distributed to vulnerable households	20 Wards		

Supplied to Vulnerable Households ,Women, people with disabilities and Youth Groups.					
drought tolerant and Hybrid Seeds supplied to farmers.	Drought tolerant and hybrid seeds supplies to farmers	20 Wards			
Metallic Cattle Crush (Akoros) constructed.	Cattle crush constructed	20 Wards			
Livestock vaccinated and deworming.	No. of livestock vaccinated	20 Wards			
Pasture land establishment.	Hectares of land established for pasture	12 Wards			
Supply of Grass seeds and hay to farmers	Kilograms of seeds supplied to famers	12 Wards			
Knapsack sprayers supplied to pastoralists	No. of knapsack sprayers supplied to pastoralists	20 Wards			
Promotion of Fish farming-provision of fingerlings to youth groups	No. of fishponds supported with fingerlings and producing fish	2 Wards			
Supply of Onion seeds ((Red Peroy Supayule) and Potatoes (Shangi)	Kilograms of onion seeds	7 wards			
Provision Of Soil Testing Kit (Soil Pal Kit)	No. of soil testing kits supplied countywide	20 Wards			
Sub-surface dams Constructed	No. of New Sand Dams Constructed	Wards			
Water Pans Constructed	No. of Water pans constructed				
Purchase and distribution of Mango, avocadoes, oranges, bananas, and tree Seedlings to famers wards of the county	No. of fruit trees distributed to farmers	Wards			
Installation of Biogas in households					
				34,000,000	109,600,000

Prepared by:	Kennedy Pkew Cheptuimot	Designation:	Director Environment, Natural Resources and Climate Change - West Pokot County	Signature / Stamp:	
Approved by:	Mr. Leonard Kamsait	Designation:	Chief Officer-Water, Environment, Natural Resources and Climate Change - West Pokot County	Signature / Stamp:	

**COUNTY DIRECTOR
CLIMATE CHANGE
WEST POKOT COUNTY
P.O. BOX 222-30600
KAPENGURIA**

**CHIEF OFFICER
DEPARTMENT OF WATER,
ENVIRONMENT, NATURAL RESOURCES AND CLIMATE CHANGE**

29 AUG 2023

**COUNTY GOVERNMENT OF WEST POKOT
P.O. Box 49-30600, KAPENGURIA**

Prepared by:	Kennedy Pkew Cheptuimot	Designation:	Director Environment, Natural Resources and Climate Change - West Pokot County	Signature / Stamp:	
Approved by by:	Mr. Leonard Kamsait	Designation:	Chief Officer-Water, Environment, Natural Resources and Climate Change - West Pokot County	Signature / Stamp:	