



COUNTY GOVERNMENT OF KILIFI

COUNTY CLIMATE CHANGE ACTION PLAN

2023-2027

MAY, 2023

Foreword

Climate change is the greatest challenge of our time globally. Climate change is already having an impact on human and natural communities. The impacts of climate change will only worsen as a result of increasing emissions from human activities. Even though developing countries like Kenya contribute the lowest emissions, they will disproportionately bear the brunt of climate change impacts.

The frequency and magnitude of extreme weather events is projected to increase with far reaching impacts across the country, including Kilifi County. In any case, large parts of the county fall within arid and semi-arid zones. Moreover, the county's economy is heavily dependent on climate-sensitive sectors. Majority of these sectors now fall within devolved functions. Therefore, the County Government of Kilifi has an obligation to address the impact of climate change for sustained economic growth and the general well-being of county residents.

My government commits to supports all actions geared towards climate change adaptation and mitigation. This includes formulating and implementing appropriate plans that address the impacts of climate change, strategies geared towards reduced impacts of climate change across sectors within the county and any climate smart investment within the county of Kilifi. My government acknowledges that our commitment requires strong political goodwill, partnership between state and non-state actors, allocation of adequate human and financial resources, and supporting community efforts towards climate change adaptation and for this, you can count on my government for support.

H.E GIDEON MAITHA MUNG'ARO, OGW

GOVERNOR

COUNTY GOVERNMENT OF KILIFI

Acknowledgement

The County Government of Kilifi has acknowledged the devastating impacts of climate change. County Governments are the first line responders to community challenges including climate extremes. The Kilifi County Climate Change Action Plan (KCCCCAP; 2023-2027) is a hazard and priority identification pathway towards building community resilient livelihoods in Kilifi County. This plan was developed through a participatory process under the leadership of the County Executive Committee Member for the Department of Water, Environment, Forestry, Climate change, Natural Resources and Solid waste management.

We wish to acknowledge the invaluable contributions from the Technical Working Group (TWG) led by Chief Officer, Environment, Forestry, Climate Change & Solid Waste management, Directors and the entire staff from the Department of Water, Environment, Forestry, Climate change, Natural Resources and Solid Waste Management. We also acknowledge the contribution from other county line Departments including Agriculture; Livestock & Fisheries; Finance & Economic Planning; Health; Gender, Youth & Sports; Energy; and Tourism. We cannot forget the contributions by relevant national government agencies, among others, National Environment Management Authority (NEMA), National Drought Management Authority (NDMA), Kenya Forest Service (KFS), Kenya Wildlife Service (KWS), and Coastal Forest Conservation Unit (CFCU) among others.

We are also grateful for the contributions from development partners including Nature Kenya, Action Aid, World Vision, Arid Lands Information Network (ALIN), Voluntary Services Overseas (VSO), Kilifi Platform for Climate Governance (KPCG), Ward Climate Change committees, youth groups, women groups, and other vulnerable groups whose voices informed the contents of this plan.

HON. OMAR SAID OMAR

COUNTY EXECUTIVE COMMITTEE MEMBER,
DEPARTMENT OF WATER, ENVIRONMENT, FORESTRY, CLIMATE CHANGE & SOLID
WASTE MANAGEMENT.

Table of Contents

Foreword	ii
Acknowledgement	iii
List of Figures	5
List of Tables	7
Acronyms	8
Executive Summary	9
Definition of Terms	10
1.0 Background and Context	13
1.1 Climate Change in Kilifi County	13
1.1.1 Geography	13
1.1.2 Demography	13
1.1.3 Economy and Urbanization	13
1.2 Underlying Climate Resilience Context	15
1.2.1 Agro-ecological Zones	15
1.2.2 Prevailing climate	16
1.2.3 Climate trends and projections	17
1.2.4 Impacts of Climate Hazards in the County	18
1.2.5 County Climate Hazard Map	24
1.2.6 Summary of Differentiated Climate exposure and Vulnerability of key groups	26
1.2.7 County Climate Change Action Plan process	27
1.3 Brief Overview of Climate Change Actions in the County	29
1.3.1 Mainstreaming of NCCAP in County Actions	29
1.3.2 Climate Change in Kilifi CIDP (2023-2027)	30
1.3.3 Other key climate actions and strategies in the County	30
2. Policy Environment	32
3.1 International level	32
3.2 Regional level	33
3.3 National level	33
3.4 County level	36
3. Priority Climate Change Actions	37
3.1 Strategic climate action priorities in the PCRA	37

3.2 Sectorial Climate Change Action Priorities	37
3.2.1 Social Protection, Culture and Recreation	37
3.2.2 Agriculture, Livestock Development and Fisheries	38
3.2.3 Lands, Housing, Physical Planning and Urban Development.....	40
3.2.4 Energy and infrastructure	40
3.2.5 Trade, Tourism, Industrialization and Co-operatives Development.....	41
3.2.6 Health.....	42
3.2.7 Education	43
3.2.8 Water, Environment, Natural Resources and solid waste management	43
4. Delivery Mechanisms for CCAP	45
4.1 Enabling Factors.....	45
4.1.1 Enabling Policy and Regulation	45
4.1.2 Mainstreaming in the Kilifi CIDP (2023-2027).....	45
4.1.3 Multi-stakeholder participation processes.....	46
4.1.4 Resource mobilization strategy	47
4.1.5 Climate Information Services and Climate Data Access	48
4.1.6 Resilience Planning Tools	48
4.1.7 Measurement, Reporting and Verification	50
4.2 Implementation and Coordination Mechanisms	50
4.2.1 Coordination structures	50
Department Governance structure.....	53
4.3 Implementation Matrix	54
Annexes	62
Annex 1: Participants List.....	62
Annex 2: Ward Adaptation Priorities	102

List of Figures

Figure 1: Agro-ecological zones	15
Figure 2: Kilifi County rainfall trends and projections	17

Figure 3: County Hazard Map 24

List of Tables

Table 1: Social Protection, Culture and Recreation	37
Table 2: Agriculture, Livestock Development and Fisheries	38
Table 3: Lands, Housing, Physical Planning and Urban Development	40
Table 4: Energy and infrastructure	40
Table 5: Trade, Tourism, Industrialization and Co-operatives Development	41
Table 6: Health	42
Table 7: Education.....	43
Table 8: Water, Environment, Natural Resources and solid waste management.....	43
Table 9: Implementation Matrix	54
Table 10: Participants List	62
Table 11: Ward Adaptation Priorities	102

Acronyms

AU	African Union
ADP	Annual Development Plans
AMCEN	African Ministerial Conference on Environment
BMU	Beach Management Unit
CBD	Convention on Biological Diversity
CFA	Community Forest Association
CSA	Climate-Smart Agriculture
CIDP	County Integrated Development Plan
CIMES	County Integrated Monitoring and Evaluation System
COP	Conference of Parties
CSA	Climate Smart Agriculture
CSP	County Spatial Plan
EAC	Intergovernmental Authority on Development
EMC	Environment Management Committee
ENSO	El Nino Southern Oscillation
EDE	Ending Drought Emergencies
FLLoCA	Financing Locally Led Climate Actions
ICZM	Integrated Coastal Zone Management
IDDRSI	IGAD Drought Disaster Resilience and Sustainability
IGAD	Intergovernmental Authority on Development
IPC	Integrated Food Security Phase Classification
IPCC	Intergovernmental Panel on Climate Change
KCCCAP	Kilifi County Climate Change Action Plan
M&E	Monitoring and Evaluation
MTP	Medium Term Plan
NCCAP	National Climate Change Action Plan
NDC	Nationally Determined Contributions
NIMES	National Integrated Monitoring and Evaluation System
PCRA	Participatory Climate Risk Assessment
PPP	Public-Private Partnerships
PWD	People with Disability
SDG	Sustainable Development Goals
UNCCD	United Nations Convention to Combat Desertification
UNFCCC	United Nations Framework Convention on Climate Change
WUA	Water User Association
WRUA	Water Resource User Association

Executive Summary

Climate change present both challenges and opportunities for Kilifi County government, business fraternity and the wider public. Kilifi County has experienced its share of the effects ranging from droughts, floods, storm surges, locus invasion, and increased incidences of communicable diseases. Consequently, there have been related social implications such as food insecurity, displacement, loss of life and livelihoods as well as economic implication such as damage to infrastructure and productive assets.

The Kilifi County Climate Change Action Plan (KCCCAP; 2023 – 2027) is first of its own report following the successful completion of the Participatory Climate Risk Assessment (PCRA) process across all wards in the county. The process involved actual engagement of the ward climate change committees and other members of the community through a vigorous data collection process. Several tools of works were employed and massive data across the wards was collected. The data incorporates climate change linked to hazards affecting the community.

This plan details the analysis of climate hazards, vulnerabilities and capacities within the community. It provides detailed hazard profile from the historical data gathered from the community members engaged. The plan also discusses the impacts of climate change on key sectors of the economy, among others, water and sanitation, health, infrastructure, tourism, forestry and energy, education, trade and industry, agriculture, livestock, and fisheries. The plan then outlines the climate adaptation actions the county will put in place in the next five years to address the identified challenges across the priority sectors. Implementation framework and monitoring and evaluation plan has also been provided for. The plan also explores sources of climate finance and strategic partnerships to ensure successful implementation.

HERBERT TAWA MWACHIRO

CHIEF OFFICER

ENVIRONMENT, FORESTRY, CLIMATE CHANGE AND SOLID WASTE MANAGEMENT

COUNTY GOVERNMENT OF KILIFI

Definition of Terms

Adaptation refers to actions that help reduce vulnerability to the current or expected impacts of climate change. Examples of adaptation include planting crop varieties that are more resistant to drought or changing conditions, managing land to reduce wildfire risks, building stronger flood defenses, relocating infrastructure from coastal areas affected by sea level rise, and developing insurance mechanisms specific to climate-related threats.

Adaptive capacity: Ability of systems, institutions, humans, and other organisms to adjust to potential damage, take advantage of opportunities, or respond to consequences.

Climate is the average of weather patterns in a specific area over a longer period of time, usually 30 or more years, which represents the overall state of the climate system.

Climate change refers to the long-term changes in the Earth's climate that are warming the atmosphere, ocean and land. Climate change is affecting the balance of ecosystems that support life and biodiversity, and impacting health. It also causes more extreme weather events, such as more intense and/or frequent hurricanes, floods, heat waves, and droughts, and leads to sea level rise and coastal erosion as a result of ocean warming, melting of glaciers, and loss of ice sheets.

Climate crisis refers to the serious problems that are being caused or are likely to be caused by changes in the planet's climate.

Climate justice means putting equity and human rights at the core of decision-making and action on climate change.

Climate finance refers to financial resources and instruments that are used to support action on climate change. Climate finance is critical to addressing climate change because of the large-scale investments that are needed to transition to a low-carbon global economy and to help societies build resilience and adapt to the impacts of climate change.

Disaster Risk Reduction: systematic approach to identifying, assessing and reducing the risks of disaster. Aims to reduce socio-economic vulnerabilities to disaster and the environmental and other hazards that trigger them

Disaster: the serious disruption of the functioning of society causing widespread human, material or environmental losses, which exceed the ability of the affected communities to cope using their own resources. Disasters occur when the negative effects of the hazards are not well managed.

Disaster risk reduction: is a framework and a tool that determines the degree of risk and describes measures to increase capacities and reduce hazard impact on the elements at risk so that disaster will be avoided.

Greenhouse gases are gases that trap heat in the atmosphere, causing global warming and climate change. The main greenhouse gases released by human activity are carbon dioxide, methane, and nitrous oxide, as well as fluorinated gases used for cooling and refrigeration.

Global warming is an increase in the Earth's average surface temperature that occurs when the concentration of greenhouse gases in the atmosphere increases. These gases absorb more solar radiation and trap more heat, thus causing the planet to get hotter. Burning fossil fuels, cutting down forests, and farming livestock are some human activities that release greenhouse gases and contribute to global warming.

Hazard: is a potential source of harm. Substances, events, or circumstances can constitute hazards when their nature would allow them, even just theoretically, to cause damage to health, life, property, or any other interest of value

Mitigation refers to any action taken by governments, businesses, and people to reduce, sequester, or prevent greenhouse gas emissions. Examples of mitigation include transitioning to renewable energy like wind and solar, investing in carbon-free transportation, promoting sustainable agriculture and land use, planting forests to act as carbon sinks, and changing consumption practices and diet behaviors.

Nature-based solutions support climate change adaptation and mitigation by using natural systems and processes to restore ecosystems, conserve biodiversity, and enable sustainable livelihoods.

Resilience is the capacity of a community or environment to anticipate and manage dangerous climatic events and recover and transform after the ensuing shock, with minimal damage to societal wellbeing, economic activity, and the environment. Examples of increasing resilience in a community include long-term planning, early warning systems, training for new skills, diversifying the sources of household income, strengthening nature-based solutions, and building robust communal response and recovery capacities.

Risk: is the potential for negative consequences to something that is valued when the occurrence and degree of a future outcome is uncertain. Risks from climate change impacts arise from the interaction between a hazard (triggered by an event or trend related to climate change), vulnerability (susceptibility to harm) and exposure (people, assets or ecosystems at risk).

Risk assessment: qualitative and/or quantitative scientific estimation of risks.

Risk management: plans, actions, strategies or policies to reduce the likelihood and/or consequences of risks or to respond to consequences.

Vulnerability: Propensity or predisposition to be adversely affected. It encompasses sensitivity or susceptibility to harm, and lack of capacity to cope and adapt.

Weather refers to atmospheric conditions at a particular time in a particular location, including temperature, humidity, precipitation, cloudiness, wind, and visibility. Weather conditions do not happen in isolation, they have a ripple effect. The weather in one region will eventually affect the weather hundreds or thousands of kilometers away.

1.0 Background and Context

1.1 Climate Change in Kilifi County

1.1.1 Geography

Kilifi County is geographically located at coordinates 3° 38' 0" South, 39° 51' 0" East. It covers a total surface area of 12,370.8 km² and accounts for 2.2% of Kenya's total surface area. It borders the counties of Tana River to the North, Taita Taveta to the West, Mombasa and Kwale to the South and the Indian Ocean to the East. The county has four major topographic features. Administratively, the county is divided into 7 official sub-counties (Kilifi North, Kilifi South, Ganze, Malindi, Magarini, Rabai and Kaloleni) and 2 unofficial sub-counties (Chonyi and Kauma). It has 35 wards, 54 locations, and 165 sub locations.

First is the narrow belt that forms the coastal plain which lies below 30m above the sea level. Second is the foot plateau that lies to the east of the coastal plain, characterized by a slightly undulating terrain that falls between 60m and 150m sloping towards the sea. Third is the coastal range which falls beyond the foot plateau between 150m to 450m altitude, with distinct low range sandstone hills. Fourth is the Nyika plateau which rises from 100m to 340m above sea level covering about two thirds of the county area on its western side. This plateau is characterized by low population density, thin vegetation cover, shallow depressions and gently undulating terrain.

The drainage pattern of the county is formed by river Sabaki which is a permanent river and a number of ephemeral rivers such as Nzovuni, Rare, Goshi and Kombeni and streams which include Wimbi, Kanagoni, Masa, Muhomkulu and Mleji that drain into the Indian Ocean.

1.1.2 Demography

According to the Kenya Population and Housing Census (KPHC) of 2019, the county's population stood at 1,453,787, of which 749,089 were women and 704,089 men. Around 78.5% of the population resides in rural areas and depends on agriculture as the main source of livelihood. The County is characterized by a high rate of absolute poverty (71.7%) compared to the national average of (47%).

Several factors are tied to the high poverty index including: landlessness estimated at 11.3% of the households, limited access to piped water (48% of the population accessing piped water), and food insecurity evidenced by the high prevalence of stunting growth in children of 39.1%. Besides, access to education is affected by the distance that students must travel to school where 65% of primary schools and 72% of secondary schools are located more than 5 kilometers away from students' homes. Indeed, this complicates students' access to basic education and their ability to empower themselves socio-economically.

1.1.3 Economy and Urbanization

Most livelihoods in Kilifi County are based on agriculture. The main food crops include maize, cowpeas, green grams, and cassava, while the main cash crops are coconuts,

cashew nuts, sisal, mangoes, and pineapple. Cash crops are typically cultivated in Kilifi South, Kilifi North, Malindi, Kaloleni, Rabai and Magarini. The main livestock include cattle (Zebu), goats, sheep, poultry and beekeeping. Majority of smallholder livestock herders keep indigenous breeds. The county has a total of 11 ranches where Boran and other exotic beef cattle are bred. Apiculture is equally a significant economic activity among small holder farmers in the County. The county has a total of installed 14,192 bee hives.

Kilifi County has a massive blue economy potential due to the 265km long Indian Ocean coastline and an EEZ of 200 nautical miles. The county has a total of 4,713 artisanal fishermen operating along the county's shoreline. The total number of fishing vessels is estimated at 1,057, with an annual catch of about 443,689 tonnes. Marine fisheries is also carried out within the county including small scale mariculture in Ngomeni, Mida and Kilifi creeks.

The county's main urban centres include Malindi, Kilifi, Mtwapa, Kaloleni, Mazeras, Mariakani, Watamu, Magarini, Marereni, Majengo and Bamba. The county's urban population was 328,652 in 2018, constituting 36.8 percent of the total population. This proportion of urban population mirrors that of the country at 39 percent and that of Africa at 36 percent. Unfortunately, the rapid growth is taking place without corresponding capacity of urban management institutions to guarantee sustainable livelihoods. This is evidenced by a myriad of challenges including the proliferation of slums.

The County labor force constitutes 56% of total population. Of this population, the youth (ages 15-29) comprise 49%. The level of unemployment in the County has worsened due to recent tourism industry recession occasioned by Covid-19 and violent extremism that is linked to lawlessness in Somalia.

1.2 Underlying Climate Resilience Context

1.2.1 Agro-ecological Zones

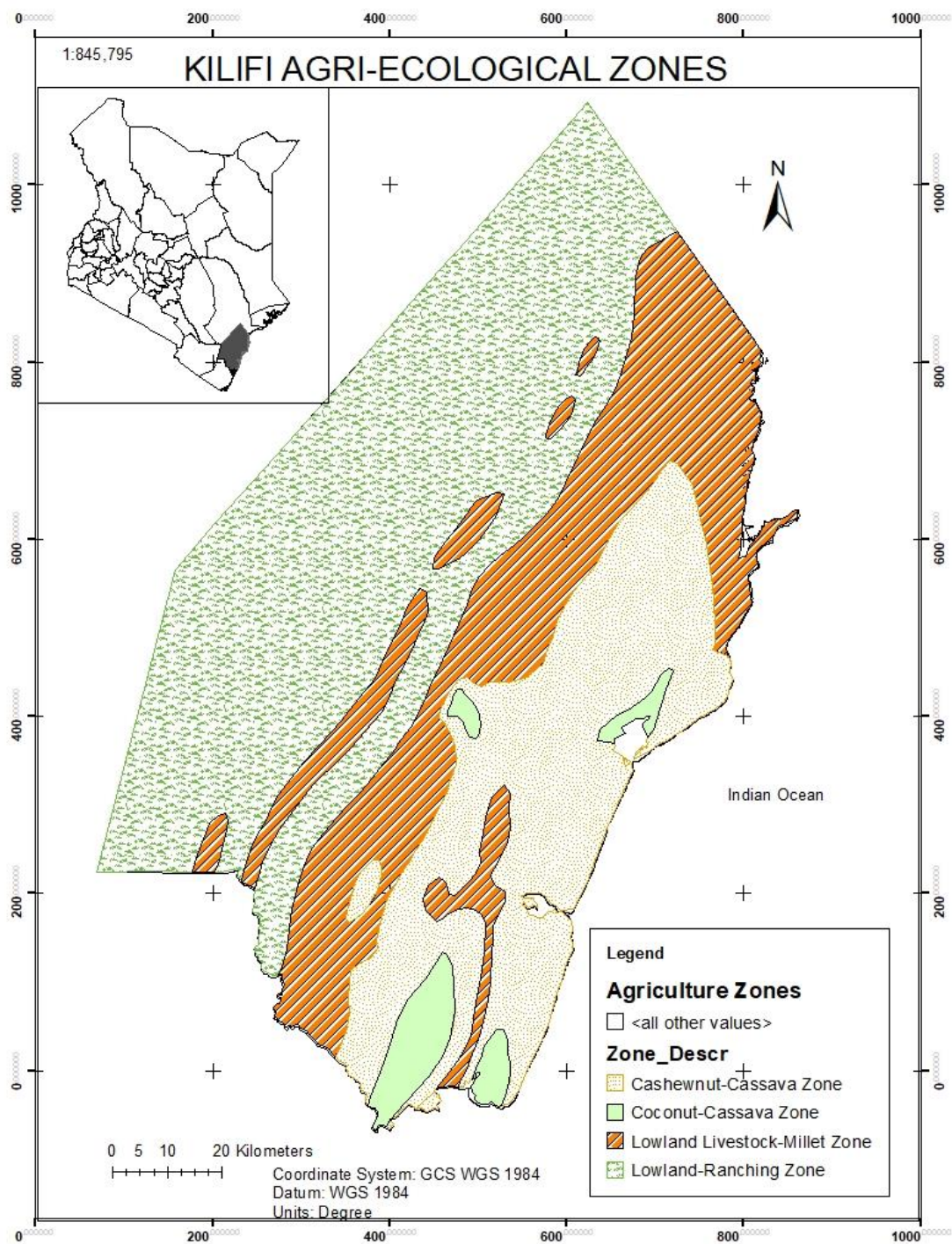


Figure 1: Agro-ecological zones

The county is divided into 5 agro-ecological zones defining areas with similar production related characteristics such as annual mean temperatures, vegetation and humidity.

Coconut-Cassava Zone: This zone covers the coastal uplands and the low-level coastal plains. It has the highest potential for crop production in the county. Major farming activities include fruit farming (mango, citrus, cashew nut and coconut), vegetable farming (chilli, brinjals, okra, amaranthas), foods (maize, bananas, cowpeas, upland rice, green grams), and dairy farming. The zone receives an average annual precipitation of 1,300mm per annum and a mean annual temperature of 24°C.

Cashew nut-Coconut zone: This zone stretches northwards along the coastal plain up to Arabuko Sokoke forest. It receives an average precipitation of 900mm and mean annual temperature of 24°C. It has agricultural potential with the same crop types as the coconut-cassava zone but with slightly less production.

Livestock-Millet Zone: This zone is of lower agricultural potential with annual precipitation ranging from 700mm to 900mm. It's suitable for dry land farming, supporting drought tolerant crops and ranching.

Lowland Ranching: This zone varies in altitude from 90m to 300m with annual mean temperature of 27°C and annual precipitation of 350mm to 700mm. The major activities within this zone include ranching and wildlife conservation.

Coconut Cashew Nut – Cassava Zone: The smallest of all zones, mainly found in Kilifi South and North. It lies in the altitude between 30m to 310m above mean sea level with mean temperature of 27°C and annual precipitation of 900mm per annum. The area has a similar potential for the crops found in the coconut-cassava and cashew nut-cassava zones.

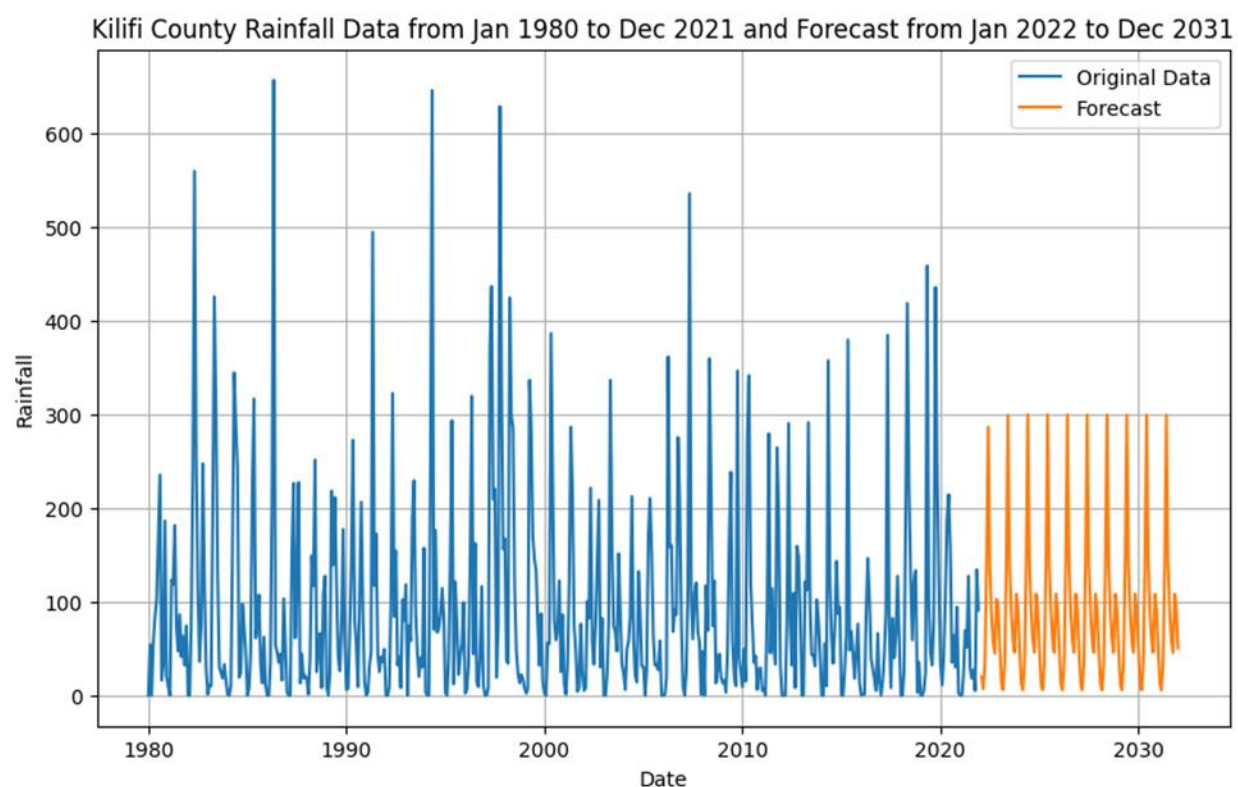
1.2.2 Prevailing climate

The county has a bimodal rainfall pattern with average annual precipitation ranging from 300mm in the hinterland to 1,300mm in the coastal belt. The short rain season is experienced in the months of October, November and December (OND) while the Long rains are experienced in the months of March–April and May (MAM). The most important season to the hinterland is the short rains for pasture regeneration and water recharge while the long rain season is the most important season for the coastal area for it supports crop production.

The annual temperatures range between 21°C and 30°C in the coastal belt and between 30°C and 34°C in the hinterland. The county experiences a very important wind field with relatively moderate wind speeds ranging from 4.8Km/h along the coastal strip to 12km/h in the hinterlands.

1.2.3 Climate trends and projections

Figure 2: Kilifi County rainfall trends and projections



During the 10 years, the highest rainfall received is anticipated to be 299.69mm in May 2023 while the lowest is 5.75mm in February for most years. Generally, there is an observed decrease in rainfall in the coming 10 years. Previously, Kilifi received a total of 10877.54mm in the last 10 years while it is predicted that in the next 10 years, Kilifi will receive a total of 10704.81mm of rain which is a 1.59% decrease in rainfall from the last 10 years. The average rainfall experienced between the next decade and the last decade for both the rainy and dry seasons tends to be higher in the next decade as the forecasted rainfall values are evenly distributed across the months and years.

Rainfall: Majority of local farmers cited a reduction in rainfall over time. Others also experienced changes in the amount and timing of rainfall. Drought has created a cycle of food insecurity, starvation, and reliance on emergency relief that has been repeated in the County every year since 2013. At the same time, Kilifi County is experiencing increasingly worse and more frequent flooding. In 2015, the County was subjected to the worst floods in more than 20 years. Six seasonal rivers burst their banks and affected more than 3,000 people, especially in the Magarini Sub-County

Droughts and floods are expected to pose even greater challenges in the coming years, as future projections predict increasing drought risk in First Season (January-June) and increasing flood risk in Second Season (July-December). Rainfall data from the historical

period (1977–2005) were compared with those in the future period (2071–2099) to determine the potential changes in the rainfall patterns. Results showed high year-to-year rainfall variability, relatively low mean daily rainfall per season, high variability within seasons and uneven distribution of rainfall within seasons. Besides, rainfall over Kilifi seemed to be unevenly spread. These statistics, coupled with a relatively small mean daily precipitation per season, imply an uneven temporal distribution of rainfall. Such variability is already affecting the area under crop cultivation, production intensity and yields

Temperature: Climate projections for the coastal region suggest that Kilifi County will become warmer than it used to be, posing risks to health, agriculture, water supply and associated sectors. By the 2040s, temperatures may become up to 3°C higher on average than current conditions, with extremely hot days and widespread heat waves becoming much more frequent. Kilifi County is already experiencing abnormal extreme temperatures in the month of March with the highest recorded temperature being 34°C. Since the early 1960s, Kilifi County air temperatures have increased by 2-3°C while no extreme low temperatures have been recorded over the same period.

1.2.4 Impacts of Climate Hazards in the County

Climate change impacts are cross cutting and diverse aspects of society's economy and environment. The adversity of the impacts of climate change impede the justifiable development of Kilifi County across key sectors.

Agriculture, Livestock, and Fisheries: Low-input, rain-fed agriculture is the main source of livelihood in the County. Inadequate rainfall, as well as the late onset and early cessation of both long and short rains, have made crop failure a recurring hazard in the county. Three (3) out of the seven (7) sub-counties often experience frequent droughts including Ganze, Kaloleni and Magarini. Drought, and unreliable rains also undermine farmer's efforts to produce appropriate crops. For instance, maize is often planted in lieu of other resilient crops in semi-arid areas such as Ganze and Magarini —worsening the prevailing crop failure.

Climate change is already affecting livestock production. High temperatures and shifting rainfall patterns have reduced livestock feed availability and therefore productivity. Variations in temperature are also responsible for disease outbreaks while warmer seasons increase the spread of diseases.

Rising sea levels also threaten the low-lying areas of the county's coastline. For instance, agricultural land will no longer be usable due to salt water intrusion. The impact of the locust invasion at the end of 2019 and beginning of 2020, which devastated crops also had its basis on climate change. In May 2018, an unusually powerful cyclone hit the Arabian Peninsula, and the heavy rainfall enabled desert locusts to breed. Another cyclone in October 2018 kept these locusts alive, and they spread to Yemen then to East Africa, driven by another cyclone in 2019. In any case, climate change increases the severity and frequency of cyclones through warming of the oceans.

Climate change also poses a significant threat to fisheries in the county. High temperatures have made the inshore water habitats unsuitable for fish, causes bleaching of coral reefs, thereby disrupting their health and diminishing their protective role of the coastlines. Conversely, increases in rainfall trigger contamination of the coral reefs. Global warming has also altered the growth rate of seagrass. High temperatures also cause ocean upwelling thus reducing productivity of fish. Worse still, as sea level rise, low lying coastal areas are being inundated with saltwater causing salt stresses on fish. Taken together, these effects have a negative impact on the fishing community in Kilifi County.

Energy, Environment, and Forestry: Kilifi County has a variety of ecosystems that are important for the provision of environmental goods and services. The county has 18 forests which are gazetted while 7 are non-gazetted. The main forests includes; Arabuko Sokoke, mangrove forests, and Dakatcha woodlands. Over 80% of the population in the county relies on wood fuel for their energy needs, a fact that has led to destruction of forests in the county. This problem is particularly pronounced in Dakatcha woodlands and Mwangea forests. Other unintended impacts include reduced water quality and quantity through destruction of water catchments. Climate change is making a bad situation worse. Increase in temperature is likely to affect ecologically sensitive coastal rain forests like Arabuko Sokoke. The gradual decline in environmental quality brings with it economic hardships to resource dependent communities and engender conflicts. In Magarini, locals often clash with migrating herders from Tana River County due to crop despoilment.

The county is also endowed with mangrove forests, important nursery grounds for many commercial fisheries. These are also a habitat for migratory birds, offer protection of the shoreline from storms and waves, and act as carbon sinks. Mangroves also offer protection to sea grass beds and coral reefs by filtering sediments. Mida Creek mangrove forest has been affected by changes in inundation duration frequency, illegal logging as well as salinity levels caused by sea level rise thus reducing its productivity. Increased flooding has caused change in species composition while deforestation is increasingly responsible for coastal erosion.

Water and Sanitation: Kilifi County is endowed with both surface and underground water resources. However, the county is a generally water stressed with a general daily water gap of 99,784 m³/d cubic metres per day (2022) which will rise to 118,684 m³/d and 137,584 m³/d by 2026 and 2030, respectively. The County frequently faces droughts exacerbating the already worse water problem, which will have a wide range of implications for food security, health, manufacturing, and associated sectors. Rainfall has equally become irregular, and when it rains, downpour is more intense resulting in flooding. Areas prone to flooding include the Sabaki flood plain, Kwa Kadzengo in Kikambala, Mtondia, Vitengeni, and Mbogolo in Mavueni area of Kilifi south. Flooding also heightens the risk of water-borne diseases. This is especially true since a significant proportion of the population lack access to basic sanitation facilities.

Water scarcity is also making natural resource management more difficult. It is projected that water scarcity will affect energy, manufacturing, agricultural production, and other

sectors of the economy. Rivers which were once over one's head are now trickling at ankle level. Irrigation upstream has further reduced the water volumes on River Sabaki which, in turn, has reduced the quantity and quality of water for downstream communities. The adverse impacts of climate change on water resources are already being experienced, by coastal communities owing to salt water intrusion in ground water and farms majorly contributed to by salt mining companies.

Health: Climate change impacts have badly affected human health within Kilifi County. The level of climate-sensitive degree of risk has increased the prevalence of infectious diseases like diarrhoea, typhoid fever, vector-borne diseases like malaria and respiratory diseases resulting from poor air quality or even overreliance on wood fuel for cooking. The common practice of open defaecation worsens the risk of contamination of surface water sources and diseases spread by oro-faecal route. Frequent droughts especially in the semi-arid lowlands of the county has led to many rivers drying up and poor water quality. The health effects are seen in the rising number of people suffering from malnutrition and gastroenteritis as well as mental health problems occasioned by loss of livelihoods. Worse still, heat stress-related mortality is expected to increase among people aged 65 and above.

When primary health care services are stretched thin and performing poorly as is the case with Kilifi County, it is difficult to respond to the health effects of climate change and this includes access to essential health services by vulnerable communities during climate crisis. For instance, the County Department of Health is understaffed, with a total staffing gap of 5,957 personnel. Further, the average geographical distance to nearest health facility in the county is 5km while the prevalence of stunting among children under five years stands at 39%. Additionally, 4.7% and 18.2% of children under five years are wasted and underweight across the county. There is a network of community health volunteers (CHV), often activated when there is funding for specific projects, including public health initiatives. However, they are unpaid, have competing demands, and this affects their voluntary work. Taken together, underlying health challenges will become more pronounced owing to climate change.

Trade and Industrialization: Counties have a role in trade development and regulation. Kilifi County boast of 78 trading centres with 31,998 licensed retailers and 641 wholesalers. The major trading centres include Kilifi, Malindi, Mtwapa, Mariakani, Kaloleni, and Watamu among others. The County is the leading national source market for cashew nut and coconut. Kilifi County also trades in industrial products. The county currently has 22 manufacturing industries which include soft drink manufacturing industries in Mtwapa, salt manufacturing industries in Gongoni and Marereni (salt belt), cement manufacturing industries in Rabai, Vipingo and Kaloleni, and Steel manufacturing industries in Mazeras and Mariakani among others. In the county, we also have small cottage industries focussing on cashew nuts.

Trade and manufacturing sectors are often indirectly affected by climate change, as they depend on climate sensitive sectors such as agriculture, transportation and energy.

Reduced agricultural productivity occasioned by climate change may lead to reduced supply of raw materials for agro-processing or even trade. On the other hand, destruction of transport infrastructure by floods often limits movement of people, goods and services, thus hindering trade and manufacturing. Other threats include reduced manufacturing and trade activities due to power outages occasioned by either low power production or power rationing (for climate-sensitive sources such as hydro, wind and solar) or even damage to power distribution lines by floods.

Cultural Heritage, Tourism and Wildlife: Tourism is one of the county's main economic activity employing tens of thousands of people. The tourism industry has spurred other economic activities. The county is rich in endemic flora and fauna, attractive physiographic features, tropical climate, and sandy beaches that makes it a unique tourist destination. Further, the County has a rich cultural and historical heritage that includes Swahili/Arab and Mijikenda cultures, world heritage sites like the Kaya forests and archaeological monuments in Gede, Malindi, Takaungu, Mnarani, and Rabai—dating back to the slave trade era.

The connection of tourism to the natural environment makes the sector highly vulnerable to climate change. For instance, sea level rise has destroyed magnificent sandy beaches and hotel establishments through erosion and flooding, storms at sea affect tourism activities such as snorkelling and sport fishing, and high temperatures have caused bleaching of coral reefs important for tourism. Other impacts that are already being experienced include, among others, salt water intrusion into estuaries and freshwater aquifers, decreased light penetration leading to loss of coral reefs, and outmigration of specific fish species that, in turn, affects sport fishing and associated tourist activities.

Frequent droughts also impact tourism as wildlife competes for water and other resources with humans or even livestock. Wild animals from the Tsavo East and Arabuko Sokoke often leave the parks and moved into inhabited areas where they destroy crops and/or come into conflict with humans—thereby increasing food insecurity. Elephants are often seen where they had not been seen in decades, and they destroy crops grown by drought-stricken farmers. Hippos congregating in the remaining waters along Sabaki River become more aggressive, and there have been several attacks and some deaths reported recently. Overall, severe droughts are causing shifts in wildlife distribution patterns and loss of biodiversity including extinction of endemic species. In extreme cases, wild animals will eventually die because of lack of water and food. This will affect tourist arrivals in the county and Kenya as a whole.

Infrastructure: Transport infrastructure such as county roads, street lighting, airstrips, ferries and harbours (excluding the regulation of international and national shipping and associated matters) as well as housing are now devolved. Kilifi County has a road network of 101,000 km, and 40km of rail network which is part of the Mombasa-Kisumu railway stretch that passes through Mazeras and Samburu. The county also boasts of two modern bus termini in Malindi and Kilifi towns. There are other middle level bus parks in Mariakani and Kaloleni. There are a total of five jetties located at Mtwapa, Kilifi, Ngomeni, Malindi

and Takaungu. Other infrastructural facilities include Early Childhood Development Education (ECDE) centres, health facilities, markets, water supply systems, and county offices among others.

Climate change associated disasters are known to be destructive and, in the past, have destroyed critical infrastructure in the county. High temperatures may lead to softening and expansion of tarmac roads and, in turn, create rutting and potholes or even weaken bridge joints. Climate change is also projected to increase the intensity of flooding, which could destroy critical infrastructure or even render most roads impassable. In 2015, the county was subjected to the worst floods in more than 20 years, cutting off the road network, destroying homes, and affecting more than 3,000 people especially in the Magarini Sub-County. Sea level rise will also have a negative implication on biodiversity and ecosystem services in Kilifi County. For instance, the 2004 Indian Ocean Tsunami and 2006/07 flooding destroyed fishing infrastructure and several fishing vessels. Taken together, these impacts will increase the cost of developing and maintaining critical infrastructure in the county.

Human settlement and Migration: Human settlements and patterns in Kilifi County are influenced by proximity to economic and environmental factors such as jobs, markets, agriculture and fishing areas and physical infrastructure such as social roads, housing, water and electricity. The county has a substantial population living in informal settlements. The growth of informal settlements is unprecedented. Some of the reasons for the rapid expansion of informal settlements include, among others, rural-urban migration, urban poverty, and insecure land tenure. These informal settlements are highly vulnerable to climate change including floods and the resultant displacement occasioned by sea level.

In 2015, the County was subjected to the worst floods in more than 20 years. Six seasonal rivers burst their banks, displacing more than 3,000 people especially in Magarini Sub-County. Migration of families has also been reported due to extended drought. For instance, Chakama's land has become extremely dry, hitting subsistence farmers badly. Some residents of Chakama recently relocated to other villages closer to River Sabaki. These families, with several children, often live on open ground without decent housing, toilets, hospitals or even schools nearby. Some of these migrant families have had to leave their older children behind to attend primary school. The separation was very stressful and often triggers mental health problems and gender-based violence.

Education: Kilifi County has 799 public ECDE centres with a total of 1,723 teachers. There are also 810 private ECDE schools. Transition rate from pre-school to the next level is 45%, implying that an estimated 55% of the pupils don't proceed to primary education. The semi-arid regions (Ganze and Magarini) of the county are mostly affected. Overall, the county records low literacy levels and teen pregnancies owing to a combination of factors such as poverty. The impacts of climate change will accentuate existing challenges in the education sector.

Climate change's main impact on the education sector is as a result of the sector's linkages with agriculture, food security, livelihoods and household incomes in agriculturally dependent communities in Kilifi. In such places, food insecure (hungry) children often miss school, as they and their families resort to seeking opportunities to get food. Further, reduced agricultural productivity implies that many rural households cannot afford fees for their secondary school-going children.

1.2.5 County Climate Hazard Map

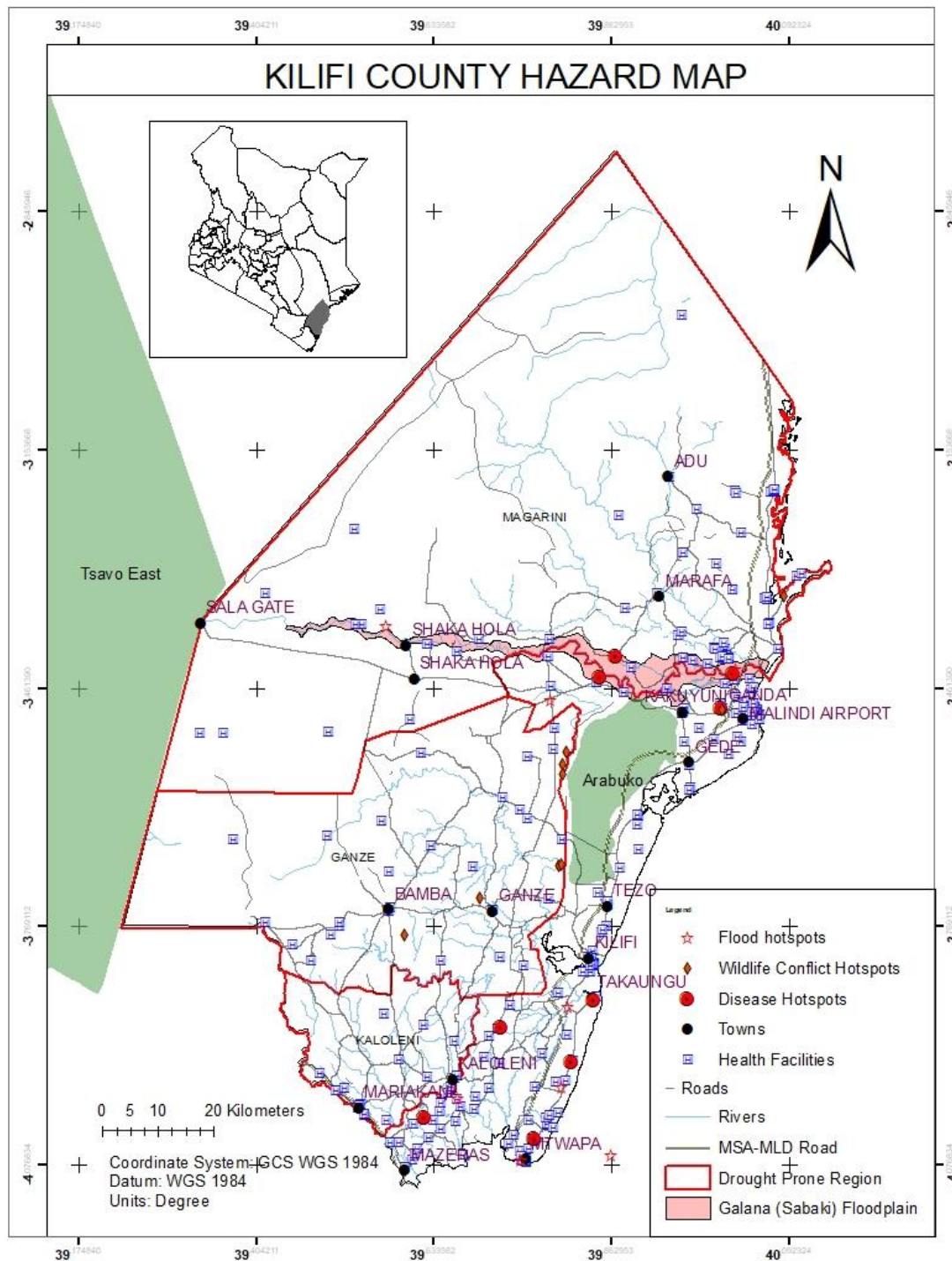


Figure 3: County Hazard Map

Drought: Almost three quarters of Kilifi County is frequently affected by droughts as marked by the red line (boundary) in the map above. Three (3) out of the seven (7) sub-counties often experience frequent droughts including Ganze, Kaloleni and Magarini. Drought, and unreliable rains have undermined farmer's efforts to produce appropriate crops as there is recurring crop failures in the affected areas. Frequent droughts especially in the semi-arid lowlands of the county has led to many rivers drying up and poor water quality. Prevailing droughts also cause water shortages in most parts of the county that in turn affects livestock production due to inadequate pasture and drinking water. When water scarcity prevails in the arid and semi-arid Lands (ASALs) not only affects agricultural production but also natural resource management hence negatively impacting energy, manufacturing, agricultural production, and other economic sectors. As a result, the at-risk population (including vulnerable groups) have to travel longer distances searching for food (including over-dependency on relief food), water, and pasture for their animals and most often causing conflicts like human-human conflicts in struggling for water and grazing land and also human-wildlife conflicts as wild animals mostly break out of the protected/conservation areas into homesteads and farms.

Floods: Floods are mostly experienced along the Galana/Sabaki floodplain symbolized by the Rose polygon towards the mouth of River Galana and mostly affects the lower areas of Magharini Subcounty and Malindi along the river basin. Other areas in the county affected by floods include Kwa Kadzengo, Kikambala, Mbogolo area around Mavueni, Mtepeni in Kilifi Sub-county, vitengeni, Makobeni, Pendeza, Mbwaka, Pangani, Mitsajeni, Kakuyuni, Chakama, Garashi, Goa and Nyambura areas (in Shimo la Tewa as symbolized by the red stars in the map. Associated impacts of floods on livelihood include destruction of homes/buildings in the low lands, destruction of crop farms, property and infrastructure, loss of life, livestock, contamination of water leading to water borne disease outbreaks like Cholera and typhoid. As a result, vulnerable populations are mostly left homeless, without food supplies, access to clean water and medical services as health facilities are often overburdened by increasing cases of patients and victims of floods.

Diseases (Human, Livestock, and Crops): The level of climate-sensitive degree of risk has increased the prevalence of infectious diseases like diarrhea, typhoid fever, vector-borne diseases like malaria and respiratory diseases resulting from poor air quality or even overreliance on wood fuel for cooking. The related disease hotspots include Sishakani, Makomboani, Mgamboni, Mikiriani, Chalani, Jibana, Kaloleni, sheila, Mtepeni, Ruruma, Jilore, ganda, Magharini, Garashi, Mavueni, Shariani, Takaungu, Ngamani, and Chasimba as symbolized by the red dots in the map above. The common practice of open defecation worsens the risk of contamination of surface water sources and diseases spread by oro-faecal route. Frequent droughts especially in the semi-arid lowlands of the county has led to many rivers drying up and poor water quality. The health effects are seen in the rising number of people suffering from malnutrition and gastroenteritis as well as mental health problems occasioned by loss of livelihoods. However, as seen in the map, some of the disease hotspots are along the flood plains which draws a closer link between disease outbreak and effects of floods contaminating water for the at-risk population and breeding of vectors causing diseases. As a result, the vulnerable groups

are affected that they cannot go to school (for children) and those living on a hand-to-mouth basis hugely affected to an extent they can go without food as their daily activities are being affected.

Human-Wildlife Conflict: Frequent droughts also impact tourism as wildlife competes for water and other resources with humans or even livestock. Wild animals from the Tsavo East and Arabuko Sokoke often leave the parks and moved into inhabited areas where they destroy crops and/or come into conflict with humans—thereby increasing food insecurity. Elephants are often seen where they had not been seen in decades, and they destroy crops grown by drought-stricken farmers. Hippos congregating in the remaining waters along Sabaki River become more aggressive, and there have been several attacks and some deaths reported recently. The conflicts are experienced in areas like Mitangani, Bandari, Mtsara wa Tsatu, Ganda, Jilore, chamari, some parts of Sokoke along the Arabuko Sokoke forest and Dida forest, some parts of Magharini sub county, and Ganze.

1.2.6 Summary of Differentiated Climate exposure and Vulnerability of key groups

Children: Children are particularly vulnerable to the effects of climate change. Malnutrition, lack of education, and exposure to sexual and gender-based violence are just a few examples of the challenges they face. In addition, disease burden resulting from floods and droughts can have a significant impact on their health.

The elderly: Elderly individuals are also at risk, with health issues often exacerbated by unfavorable climatic conditions. This can sometimes lead to death.

Youth: Youth represent a crossover between the present and future generations, yet they are seldom involved in climate change response strategies. Climate change increases youth unemployment in sensitive sectors such as agriculture, manufacturing and tourism. This may lead to youth engaging in risk behaviors such as drug abuse, crime and radicalization.

Women: Women, who often bear the primary responsibility for household and family care, may face greater challenges accessing quality health services due to shifts in priorities caused by climate change. They may also experience family instability, as men are forced to travel long distances to find grazing land for their livestock. Gender disparities also mean that women often travel long distances in search of water due to drying up of water reservoirs. During hazard such as floods women are left with responsibility of rescuing children and the elderly in the communities. Many are the times women disproportionately suffer the impacts of climate change more because of cultural norms and inequitable distribution of resources, power and less involved in key decision making

Persons With Disability (PWD): Persons with disabilities face additional challenges, including a lack of access to quality health services and education. They are often left out of environmental conservation and how to respond to challenges caused by climate

change. This lack of presentation escalate existing barriers to access food and participation in food production which increase risk in poverty and hunger.

Ethnic minorities: Indigenous people in Kilifi County have a close relationship with their natural environment which makes them more sensitive to the effects of climate change. The ethnic minority are mostly discriminated and not well represented in key planning and decision making platform concerning climate change response. This makes it harder for them to cope with the impacts of climate change.

1.2.7 County Climate Change Action Plan process

The Participatory County climate risk assessment and action planning was composed of three phases;

Phase 1: Focused on the Participatory Climate Risk Assessment (PCRA) process and resulted in the development of a county climate risk assessment report, which identifies the key climate risks for the county as well as strategic investment areas for climate resilience. The PCRA report was then used in the Phase 2. In addition, the PCRA will be able to support additional county sectorial or planning processes, such as the County Integrated Development Plan (CIDP). This phase consisted of six steps as follows; (a) formation of a cross-sectorial technical working group to lead participatory county climate risk assessment process. (b) Stakeholders' analysis and engagement process (c) stakeholder engagement at all levels (d) data collection and workshop preparation (e) multi-stakeholder climate risk assessment workshop (f) climate risk assessment report.

The technical working group members were drawn from various relevant sectors such as Water, Environment, Agriculture, Energy, Health, Meteorology, NEMA, Ward administrators and area Chiefs to ensure cross sectorial engagement and representation. The technical working group was well trained for three days on the PCRA guidelines so that it can lead the entire process. Key stakeholders were mapped out and engaged at both the ward, Sub County and county level which included CBOs, CSO and investors that are involved in climate change activities or are affected by climate change impacts in the County. Data collection tools and training materials were adequately prepared and two days data collection workshops were conducted simultaneously in all wards by trained technical persons. The Ward administrator and the area chiefs mobilized at least twenty stakeholders which included the ward climate change committees and other key participants. The selection of the participants targeted ensured representation of Women, Youth, and People with disability, vulnerable groups and marginalized groups.

Phase 2: This phase focused on the development of the participatory county climate change action plan (CCCAP) and its adoption by the County Assembly. The CCCAP is a five (5) year action plan, which identified specific county and ward level investments for building resilience to climate change. The five (5) year action plan will also include annual investment plans which can then be funded by the Financing Locally Led Climate Action (FLLoCA) program. This process drew from the climate risk assessment prepared in phase

1 as well as other available material relevant for climate action planning at County, regional and national context, including any existing Climate Change Action Plan (CCCAP), drafts of the National Climate Change Action Plan and CIDP. Phase 2 consisted of eight (8) steps that were spearheaded by the technical working group as stated below; (i) review of key documents (ii) collecting public input (iii) drafting the County Climate Change Action Plan (iv) validation workshop for the CCCAP (v) public feedback (vi) development of the second draft (vii) presentation of the CCCAP to the County Assembly.



Participants in Mtepeni and Mwarakaya wards during the Ward PCRA workshop

Phase 3: Focusses on cross -cutting/ regional bloc planning for climate resilience and integrating the CCCAPs into the national climate change action planning process. This phase also provides a pathway for bottom-up integration of counties climate resilience priorities into national level climate planning. The Kenya Climate Change Act, 2016, anticipates collaboration between all stakeholders including national and county governments on planning and execution of climate response in the country. The county is required to integrate key actions in the plan across sectors, establish practice involves the task force on identifying priority actions in the spirit of bottom – up planning. Phase 3 has three broad steps as below (a) regional bloc level inter-county consultations and joint planning (b) regional consultative meeting for NCCAP development (c) review and drafting of the updated NCCAP.

Through this process there was a deliberate effort to involve women, youth, people living with disability, Indigenous people, minority groups across the county by setting aside slots of participants meant for these different targets groups that were fully engaged. This enhanced their participation in the PCRA and action planning process in county to mainstream climate change issues in planning.

The main Objective of the CCCAP is to respond to climate change by:

- Assessing the evidence and impact of climate change in Kilifi County;
- Recommending robust adaptation measures in all priority vulnerable sectors to minimize risks associated with climate change while maximizing opportunities;
- Enhancing understanding of climate change and its impact to stakeholders, relevant climate related departments, non-state actors and local communities;
- Recommending research and technological needs and avenues for transferring existing technologies;
- Providing a conducive and enabling policy, legal and institutional framework to combat climate change; and
- Providing concerted action plan, resources mobilization plan and monitoring and evaluation plan.

1.3 Brief Overview of Climate Change Actions in the County

1.3.1 Mainstreaming of NCCAP in County Actions

The national Climate Change Act (2016) mandates counties to mainstream resilience and low-carbon actions in both public and private sector development activities and has enshrined the National Climate Change Action Plan (NCCAP) – to be developed in 5-year cycles and aligned with the Medium Term Expenditure Plans (MTP IV)—as its principal implementation instrument. It requires County governments to domesticate the Act through plans, policies, and programs and finance such programs through the public expenditure management cycle.

This Action Plan identified the most vulnerable sectors negatively impacted by climate change, associated action plans, implementing agencies, and indicative budget. Among others, the plan recommends the following adaptation actions: promoting climate-smart agriculture, livelihood diversifications, and water catchment protection, building the resilience of at-risk communities, rangeland rehabilitation, and stakeholders’ awareness on climate change and mainstreaming adaptation actions across all county departments. This plan is aligned with the third generation CIDP (2023-2027) for enhanced implementation.

1.3.2 Climate Change in Kilifi CIDP (2023-2027)

The Kilifi County Integrated Development Plan (CIDP; 2023-2027) is the county's 5-year master plan for socio-economic development. The CIDP forms the basis for allocation of resources to County projects. It is one of the primary development blue prints for counties to engage the public and prioritize critical areas of development. Indeed, the County Government Act (2012) and the Public Finance Management Act (2013) provides that no public funds shall be appropriated outside a planning framework developed by the county executive committee and approved by the county assembly. The county planning framework shall integrate economic, physical, social, environmental (climate change) and spatial matters. In fact, the current CIDP provides key indicators for tracking climate change response across all sectors of the county economy. The CIDP also informs the ADP and county annual budget. These shall be based on the annual development priorities and performance targets as provided in the CIDP. As such, the CIDP a critical entry point for the public engagement in the county's planning and development, mainstreaming climate change, tracking progress regarding the implementation of climate actions and contributing towards the national climate targets through Medium Term Plans.

1.3.3 Other key climate actions and strategies in the County

National Government ministry of environment and forestry: Introduction of melia volkensei as a drought resistance tree Kilifi in a project called Strengthening Forestry Sector Development and Community Resilience to Climate Change through Sustainable Forest Management and Land Landscape Restoration.

National Drought Management Authority (NDMA): Introduction of Climate Smart Agriculture through different community driven projects related to agriculture.

Kenya Highway Authority (KenHa): Mombasa – Kilifi Road side planting alongside the highway construction process to beautify the road as well as mitigate against the climate change impacts in Kilifi County.

Kenya Forest Service: Mangrove restoration projects across the creeks in Kilifi County for ecosystem restoration and carbon trade.

County Government of Kilifi-The Department of Water, Environment, Forestry, and Climate Change through the green schools program has distributed rain water harvesting tanks to schools and other institutions in Bamba and Adu Wards. It has also established a county tree nursery that supplies seedling for growing, rehabilitation of degraded areas across the county. Other projects successfully implemented is a solar bore hall.

Non-Government Organisations (NGOs): GroWithUS carbon trading project for mangrove restoration in Kidundu community at Kilifi Creek, Arsenal Bore community carbon trading project

Private Companies/Investors: Komaza livelihoods alternative project through agroforestry, Kenya Commercial Bank tree planting program for climate change mitigation and adaptation and National Bank of Kenya tree planting program for climate change mitigation and adaptation

The success of these projects that have been implemented points out the great potential and need for further expanding and improving our efforts in addressing the climate change related impacts across all sectors.

2. Policy Environment

3.1 International level

The United Nations Framework Convention on Climate Change (UNFCCC) sets an overall framework for intergovernmental response to climate change, recognizing that the climate system can be affected by industrial and other emissions of carbon dioxide and other greenhouse gases. The UNFCCC was adopted on May 9th, 1992 and opened for signatures at the United Nations Conference on Environment and Development (UNCED) the same year. Among others, the conference also adopted the Agenda 21, the Convention on Biological Diversity (CBD) and the United Nations Convention to Combat Desertification (UNCCD). It is a non-binding agreement. Currently, there are 197 state parties to the Convention, including Kenya.

Through its Conference of the Parties (COP), the UNFCCC provides a platform for state parties and other key stakeholders to take stock of the status of implementation of climate change actions as well as recommendations necessary to promote the effective implementation of the Convention. Decisions made and agreed to by Parties at the COP are binding to all the UNFCCC Party States, and therefore to sub-national governments under the Party States. This is the relevance of the Convention to Kilifi County for Kenya is a Party to the Convention.

Intergovernmental Panel on Climate Change (IPCC): The UN Environment Programme and the World Meteorological Organisation (WMO) jointly established the IPCC in 1989 to provide broad and balanced information about climate change. The IPCC fulfils this role by reviewing and assessing the most recent scientific, technical and socioeconomic information produced worldwide relevant to the understanding of climate change and translating this information into IPCC Assessment Reports and other periodic releases. IPCC's mandate to member states such as Kenya and its sub-national entities such as Kilifi County Government enables provision of scientific, technical and other relevant information that informs climate change actions that entities should adopt. Such information includes projected temperature and rainfall changes and associated spatial and temporal socio-economic impacts.

The Paris Agreement: The Paris Agreement to the UNFCCC, just like the Kyoto Protocol is an instrument of the UNFCCC. The Convention is a consensual, non-binding agreement that must be implemented by politically binding agreements such as the Kyoto Protocol, the Paris Agreement and others that will be agreed to, under the COPs. The Paris Agreement was adopted in Paris, France in 2015 in COP 21 and came into force on November 4th, 2016. To date, 187 Parties of the 197 Parties to the UNFCCC have ratified the Agreement. Kenya ratified it on December 28th, 2016.

The Paris Agreement mandates all Parties to the UNFCCC to undertake ambitious efforts to combat climate change and adapt to its effects, with enhanced support to assist

developing countries to do so. This is achieved primarily through the Nationally Determined Contributions (NDCs), which are country-specific and owned action plans detailing mitigation, adaptation and other related actions individual countries intend to undertake in order to combat climate change. NDCs are implemented at both national and sub-national levels, and many actions in Kenya's first NDC relate to a number of devolved functions of interest to Kilifi County.

3.2 Regional level

African Ministerial Conference on Environment: The African Ministerial Conference on Environment (AMCEN) was established in December 1985, following a conference of African ministers of environment held in Cairo, Egypt. AMCEN is a platform that brings together African ministers for environment to deliberate on common environmental and sustainable development issues of the continent. AMCEN has increasingly played a key role in advancing Africa's common positions on climate change, particularly with respect to the COPs and is therefore of relevance to sub-national governments like Kilifi. For instance, issues that inform the common positions that AMCEN advances at the COPs are discussed at both national and county levels. Kenya has particularly been active as well as played a key role in AMCEN given its role as the host of the United Nations Environment Programme (UNEP) that provides secretariat services for the platform.

The East African Community (EAC) Climate Change Policy (2010) guides Partner States on the preparation and implementation of collective measures to address climate change in the region. The African Union's (AU) Agenda 2063 commits to climate change action that priorities adaptation and calls on member countries to implement the Programme on Climate Action in Africa including a climate-resilient agricultural development program. Moreover, AU's Agenda 2063 commits to building climate-resilient economies and communities.

The Intergovernmental Authority on Development (IGAD) has also prepared the **IGAD Drought Disaster Resilience and Sustainability (IDDRS) Strategy**. IGAD Member States, Kenya included, developed Country Programming Papers (CPPs) for the Ending Drought Emergencies (EDE) interventions to be undertaken at the national level, from which the County Governments can now draw on for their drought resilience initiatives.

3.3 National level

The Constitution of Kenya 2010 forms the foundation of the institutional and legal framework for climate change action. Article 10 sets out the national values such as sustainable development. Article 42 provides the right to a clean and healthy environment for every Kenyan. The constitution created 47 devolved County Governments which have a key delivery role in climate response. For instance, the Fourth Schedule to the Constitution mandates counties to intervene on climate-sensitive sectors such as water and sanitation, agriculture, forestry, public works, health, and tourism. Under the

prevailing Constitution (2010) international laws become applicable without the necessity of domestication.

Kenya Vision 2030 and its Medium Term Plans: The Vision 2030 presents opportunities to identify climate-related actions and priorities through its implementation tools, the medium term plans (MTPs). The Third MTP (2018-2022) thus has a dedicated section on climate change, in addition to treating the same as a crosscutting theme in all sectors of the economy including governance and the rule of law. This is a key lesson for counties on how to mainstream climate change. The MTP III identifies actions to address climate change, including implementation of the second National Climate Change Action Plan (NCCAP 2018-2022) and the Green Economy Strategy and Implementation Plan (GESIP 2016-2030) as well as mainstreaming of the Climate Change Act 2016 into sector policies, programmes and projects formulation.

Green Economy Strategy and Implementation Plan 2016-2030: The Green Economy Strategy and Implementation Plan (GESIP) 2016-2030 aims at providing guidance to all development actors to adopt pathways with higher green growth, cleaner environment and higher productivity relative to the business as usual growth scenario. It will aid Kenya's transition to a low carbon development path through promotion of economic resilience and resource efficiency, sustainable management of natural resources, development of sustainable infrastructure and providing support for social inclusion. Similar to the other plans, policies and strategies for green growth/climate change response, GESIP recommends for mainstreaming of its proposed actions into development planning at both national and county levels, complemented by sound inter-governmental coordination for creating synergies.

Climate Smart Agriculture Strategy 2017-2026: The Climate Smart Agriculture Strategy (CSAS) 2017-2026 was developed to address the effects of climate change on the agricultural sector, taking cognizance of the importance of the sector to the country's economy. Agriculture being a devolved function, implementation of CSAS 2017-2026 largely rests with county governments. CSAS thus recommends that each county develops CSA policies, strategies and plans to guide implementation or integrate County specific strategies into its County Integrated Development Plans (CIDPs) and other plans.

Public Finance Management (Climate Change Fund) Regulations, 2018: The draft Public Finance Management (Climate Change Fund) Regulations, 2018 aim at operationalizing the Climate Change Fund. The Regulations provide for the disbursement of the Fund's resources in the form of loans, grants or equity to eligible implementing agencies including county governments, as provided for in Section 25, for development of innovative actions that benefit climate change responses in Kenya.

Sessional Paper No. 5 of 2016 on the National Climate Change Policy: The National Climate Change Policy (2018) was developed to facilitate a coordinated, coherent and effective response to the local, national and global challenges and opportunities presented by climate change. The Policy also recommends a mainstreaming approach

that ensures the integration of climate change considerations into development planning, budgeting and implementation across all sectors and at all levels of government. County governments are mandated to mainstream the Policy's strategic interventions into their plans, policies and budgets. Further, the Policy recommends a collaborative review of legislative and institutional arrangements that govern climate change actions in order to provide for harmonized and coordinated implementation by both levels of government. Both levels of government are equally encouraged to collaborate in the setting up of Monitoring and Evaluation (M&E) procedures for the Policy.

The Climate Change Act (2016) provides the regulatory mechanisms to implement climate change resilience and low-carbon actions in both public and private sector development activities and has enshrined the National Climate Change Action Plan (NCCAP) – to be developed in 5-year cycles and aligned with the Medium Term Expenditure Plans (MTPs)—as its principal implementation instrument. It requires County governments to domesticate the Act. The National Adaptation Plan (2015-2030) aims to integrate climate change into national and county level development planning and budgeting, as well as enhance the resilience of vulnerable populations to climate shocks.

Sessional Paper No.13 of 2014 on Integrated Coastal Zone Management (ICZM) Policy: The need for the ICZM Policy framework is premised by the failure of the largely sectoral-based resource management approach to adequately address the crosscutting developmental and environmental issues. ICZM, thus, presents a holistic approach in the planning and management of coastal resources, ensuring sustainable livelihoods and the protection of the environment. The vision of the policy is *"A coastal zone with healthy ecosystems and resources that sustain the socio-economic development and well-being of the current and future generations"*. It seeks to promote sustainable development in the coastal zone in line with the principles of the Kenya Constitution 2010 and objectives of Vision 2030.

The Draft National Irrigation Policy (2014) aims to, among other objectives, expand land under irrigation, increase agricultural water harvesting and storage capacities, promote water harvesting and exploitation of groundwater for irrigation, build capacity for the generation and utilization of irrigation research and technology, and promote an integrated approach to sustainable commercial irrigation farming. Under this policy, there have been concerted efforts to promote drip irrigation and various forms of water harvesting such as establishment of water pans, roof water harvesting and storage tanks.

National Climate Change Action Plan (2018-2022) is the first implementing tool for the Climate Change Act, 2016. The Action Plan runs concurrently with Kenya's third Medium Term Plan (MTP III). The purpose of this alignment is climate change mainstreaming into the MTPs, which are the means of implementing the Vision 2030. Thus, NCCAP II has identified key sectoral climate change issues and actions, which have been incorporated into MTP III for purposes of budgeting, financing and implementation. NCCAP II has made a similar recommendation on the mainstreaming of climate change

into all the second generation and subsequent County Integrated Development Plans (CIDPs). NCCAP II also urges counties to establish County Climate Change Funds (CCCF).

The National Adaptation Plan (2015-2030) responds to Article 7.9 of the Paris Agreement, which states that, *"each Party shall, as appropriate, engage in adaptation planning processes and the implementation of actions, including the development or enhancement of relevant plans, policies and/or contributions."* Apart from the sector-specific adaptation actions, the NAP also recommends a number of actions in which counties play a major role. These include the development of county spatial plans to inform environmentally compatible development as well as to enhance resilience and adaptation to climate change, conducting vulnerability assessments across different agro-ecological zones, and community involvement on climate change response.

3.4 County level

Kilifi County Integrated Development Plan (2023-2027). The County Government Act (2012) mandates counties to develop 5-year County Integrated Development Plans as the primary planning and budgeting tools for the devolved county units. They are thus mechanisms for implementing climate change actions and interventions at the county level. Similar to the MTP at the national level, CIDPs present an opportunity to identify climate change priorities and actions at the county level, and to integrate these actions in plans, budgets and programs. In this regard, climate change has been mainstreamed into the Kilifi CIDP (2023-2027). The CIDP identifies the threat of climate change to key sectors of the county economy while also recommending practical response measures.

Kilifi County Climate Change Act (2021) creates a Fund that will, among others, finance climate change programs in the county, mainstream climate response in the county planning and budgeting cycle, domesticate national climate change policies, and support climate change awareness in the county. The Act creates an elaborate institutional framework for climate change response mechanisms. Part II, section V of the Act provides for the establishment of Climate Change Steering Committee tasked with oversight, while part III, section 26 establishes County Climate Change Planning Committee that provides technical inputs when prioritizing climate actions, and Ward Climate Change Planning Committees that enable communities to inform county climate priorities. Part VII establishes the County Climate change fund that provides funding for priority climate change actions and interventions identified by communities and other stakeholders and approved by the steering committee. The Act offers guidance on how to access additional finance for climate change interventions, including but not limited to the National Climate Change Fund and mechanisms to leverage Public Private Partnerships (PPPs) as a vehicles for implementing low carbon climate resilient development activities in the county.

3. Priority Climate Change Actions

3.1 Strategic climate action priorities in the PCRA

In order to cushion key sectors against the impact of climate change, the stakeholders have come up with Kilifi County Climate Change Action Plan (2023-2027). The Plan has identified sectoral adaptation needs and also details specific sectoral actions plans, key implementing partners and indicative costs. This Plan is complementary and consistent with existing strategies at the county, national, regional and international levels as well as development and economic plans, principally Kilifi County Integrated Development Plan (CIDP; 2023-2027). Among others, proposed adaptation actions include:

- Up scaling production and promotion of drought tolerant, pest resistant as well as early maturing/drought escaping crops varieties; promotion of climate smart agriculture; flood based irrigation and promotion of agro-forestry, livelihood diversifications and public education on climate change;
- Supporting development of water infrastructure through improved water harvesting techniques and rehabilitation of existing ones; water catchment protection and strengthening community capacity to manage water schemes;
- Improving access to clean water and sanitation facilities to limit outbreaks of water-borne diseases;
- Reducing effects of drought and climate change on vulnerable communities for resilience building through strengthening strategies used by communities to adapt to climate variability for reduction and management of risks;
- Reforestation of degraded forests; restoration of forests and woodlands and promotion of suit-able tree species as well as in-situ conservation
- Promotion of energy efficient cook stoves to reduce household and institutional demand on biomass energy and to reduce greenhouse gas emissions

3.2 Sectorial Climate Change Action Priorities

This section provides sectorial climate change adaptation actions and programs that address the impacts of climate change in every ward as annexed in annex 2.

3.2.1 Social Protection, Culture and Recreation

Table 1: Social Protection, Culture and Recreation

Sector	Program	Sector priorities
Social Protection, Culture and Recreation	Child Protection	Sensitization forums held

		Modern child rescue centers constructed and operationalized
		Child participation channels/ platforms established
		Mandatory ECDE school enrollment and retention policy developed
		Kilifi County Child Protection Policy developed
Social protection services		Sensitization forums
		PWD Empowerment Center constructed and operationalized
		Cash transfers to PWDs, Elderly Citizens and OVCs and widows provided
		Capacity building on income generating activities
		Social Welfare and Cash Transfer Policy developed
		Gender Policy developed
Youth development		Short and labor-intensive employment opportunities Offered
		Rehabilitation centers constructed and operationalized
		Enhanced campaigns against social-interruptive activities (gambling)/ betting and control regulation)
		Domesticate Kenya Youth Development Policy
Culture and Arts		Cultural heritage sites restored, upgraded and gazette
		Cultural days and events celebrated
		County Database of Indigenous Knowledge (IK) associated genetic resource
		Establishment of art and cultural research center
		Protection and Promotion of sacred Kaya Forests
		Cultural exhibitions held
		Policy and legal frameworks developed
		Establishment of art and cultural research center
		Cultural music groups formed and trained
Sports Development		Modern sports facilities rehabilitated and established
		Operational talent academy
		Talent management framework developed
		Sports policy and frame work developed
Disaster risk management		DRM infrastructure developed
		Human resource capacity strengthened (DRM personnel, DRM sensitization and DRM policies)
		Early warning systems strengthened
		Disaster preparedness for effective response and recovery strengthened (drills and evacuation routes)

3.2.2 Agriculture, Livestock Development and Fisheries

Table 2: Agriculture, Livestock Development and Fisheries

	Crop production	Irrigation schemes developed /rehabilitated
		Water harvesting structure for irrigation developed

Agriculture, Livestock Development And Fisheries		Inputs subsidies for farmers provided.
		Extension services staff recruited
		Extension staff trained
		Farmers reached through extension
		Weather advisories disseminated
		Agricultural training center operational
		An agricultural, livestock and maritime research institute center incollabotation with higher institutions of leaning established
		Acts /policies/strategies /regulations and action plans developed.
		Soil fertility management technologies dessimented
		Farms with terraces done
		Farmers accessing agricultural mechanization services
		Tree seeding planted
		Traditional high value crops /seeds /cuttings/vines
		Marketing infrastructure developed
		Farmers accessing markets for their productions
		Value change coordination forums held
		Agroprocessing plants functional
		Value addition equipment purchased
		Marketing organization functional
		Farmers accessing affordable financial services
	Livestock Production	Acreage of pasture and fodder established
		Production equipment used
		Mechanization equipment used
		Storage facilities constructed and in use.
		Water harvesting structures developed and in use
		Improved breeds distributed
		Livestock enterprises/breeds introduced
		Farmers reached through input subsidies
		Input distributed to farmers.
		Extension services staff recruited
		Extension staff trained
		Farmers reached
		Equipment distributed for extension service delivery
		Animal vaccination campaigns undertaken
		Vet nary laboratory equipped and operationalized
		Market infrastructure developed
		Value chain coordination forum held
		Livestock processing plant functional
		Value addition equipment purchased
		Marketing organizations functional
		Famers accessing market
		Livestock export processing zone established
	Fisheries Production	Farmers adopting commercial aquaculture

	Farmers in mariculture production
	Fish hatcheries operational
	Fish landing sites fisheries infrastructure developed
	Fishers using modern fishing and production technology
	Marine fisheries resources mapped, regulated and licensed
	Groups supported in fisheries production
	Extension service staff recruited
	Extension staff trained
	Fisher folk reached
	New fisheries products produced
	Fish farmers reached through inputs subsidies
	Marketing infrastructure developed
	Fish processing plants functional
	Value addition equipment purchased
	Functional marketing organizational
	Fisher folk accessing marketing
	Farmers accessing financial services
	Effective fisheries community governance structure

3.2.3 Lands, Housing, Physical Planning and Urban Development

Table 3: Lands, Housing, Physical Planning and Urban Development

Sector	Program	Sector priorities
Lands, Housing, Physical Planning and Urban Development	Decent and Affordable Housing	Appropriate and alternative building technologies promoted
		Roads in informal scheme constructed
		Sanitation facilities constructed
		Informal settlement surveyed
	Lands Administration	Acreage of land surveyed
		Land disputes resolved
		Land banking
		Settlement schemes surveyed and allocated
		Land policies developed
		Adjudication sections completed
		Operational land systems developed
	Urban planning and development	Panned human settlements
		Urban roads constructed
		Storm water drainage developed
		Jobs created
		Recycling initiative developed

3.2.4 Energy and infrastructure

Table 4: Energy and infrastructure

Energy and Infrastructure	County road network	Roads constructed/ maintained
	Energy access	Renewable energy infrastructure developed
		Capacity building of technicians on renewable energy
		Renewable energy policy and legislations developed/reviewed
		No. of feasibility study on renewable energy reports developed
		No. of feasibility study reports on adoption of solar cookers in kilifi county developed
		No. of solar mini-grid mapping reports developed
		No. of feasibility study reports on biomass energy generation developed
		No. of feasibility study reports on the impacts of solar streets lights and solar high mast in the county developed
		No. of rural energy development action plan documents developed
		Increased adoption and clean cooking technology
		Increased adoption of clean cooking energy
		Capacity building of technicians on clean cooking technology

3.2.5 Trade, Tourism, Industrialization and Co-operatives Development

Table 5: Trade, Tourism, Industrialization and Co-operatives Development

Sector	Program	Sector priorities
Trade, Tourism, Industrialization And Cooperatives Development	Trade development and investment promotion	Trading spaces created
		Markets refurbished
		Abolition blocks constructed
		Fruit ripening facilities established
		Cold rooms and storage facilities constructed
		Trade fairs and exhibition organized
		Policies and regulations reviewed
		Innovation hub created
		Loans accessed by SMEs
	Tourism development	Tourisms fairs and expose attended/ organized
		Tourism Products packaged and marketed
		Tourism guidelines developed
		Surveys / research
		Stakeholders meeting /forums held
		Eco tourism products enhanced
		Beach safety watch towers erected
		Beach public toilets constructed
		Cultural heritage sites refurbished

		Cultural Tourism Villages/centers developed
	Cooperative Development	Develop County Cooperative legislations and Policies
		Promotion of new cooperative enterprises
		Restructuring of strategic viable cooperative societies
		Cooperative awareness and publicity
		Cooperative education guideline developed
		Training manual for cooperative reviewed
		Member Education days
		Enhance cooperative market access
		Cooperative warehouse refurbished
		Cooperates trained on value chain development and emerging business models
		Cooperatives supported with storage and processing equipment
		Cooperative marketing strategy developed
		Value chain cooperative with strategic and business plan

3.2.6 Health

Table 6: Health

Sector	Program	Sector priorities
Health	Preventive and Promotive Health Services	No. of HCWs trained on maternal, neonatal services
		No. of awareness forums conducted
		No. of HCWs trained on child health services
		No. of community units trained
		Maternal infant and young child nutrition scaled up
		Household trained on micronutrient supplementation
		Integrated management of acute malnutrition strengthened
		Nutrition in education and early childhood development promoted
		Enhanced advocacy sectorial and multisectorial coordination for improved nutrition outcome
		Enhanced capacity on nutrition surveillance information system leaning and research
		Supply chain management for nutrition commodities and equipment strengthened
		Disease detected and controlled
		Mother to child transition and prevented. Pmtct
		Percentage of pregnant women receiving intermitted preventive treatment during ANC visits
		Percentage of child under 1 year issued with long lasting insect sides nets
		Percentage of pregnant women consuming IPTP
		Percentage of pregnant women issued with long lasting insect side treatment nets
		Percentage of household sprayed with insect sides

		Water treatment commodities distributed at household level
		Proportion on school with functional toilets
		No. on CHVs conducting indigent mapping and registration of NHIF
		No. of community sensitization forums on UHC/NHIF service
	General administration planning and support service services	No. of HRH strategic plans developed
		No. of policy regulation and bills enacted
		No. of hospital boards trained and gazetted
		No. of primary level health facilities management committees trained and gazetted

3.2.7 Education

Table 7: Education

Sector	Program	Sector priorities
Education	Vocational training and education	ICT laboratory constructed
		Training workshop constructed
		Hostels constructed
		Toilets constructed
		Tools and equipment provided
		Modern trades and programs introduced
		Sensitization of VT program me conducted
		Instructors employed
		Instructor trained
	Preprimary education	ECDE teachers and coordinators employed
		ECDE teachers and coordinators trained
		Community sensitized on ECDE program
		Preprimary school policy developed
		Feeding program introduced

3.2.8 Water, Environment, Natural Resources and solid waste management

Table 8: Water, Environment, Natural Resources and solid waste management

Sector	Program	Sector priorities
WATER ENVIROMENT NATURAL RESOURCES AND SOLD WASTE MANAGEMENT	Water services	Water infrastructure developed
		Community based water management committee established
	Sanitation services	Sanitation infrastructure developed
		Stakeholders engagement
		Sanitation policies developed
	Environmental conservation and management	Establishment of the climate change information center
		Operationalization of climate change unit
		Climate change action plan
		Local lead climate action
		Community members trained appropriately on modern technology on communicating climate change issues
		Capacity build of climate change ward committee
		Mainstreaming of climate change in planning and budgeting process
		Development and implementation of the county determined contribution plan
		Gazettement and training of county climate change and steering and plaining committee
		Training and equipping of forest guide
		Training staff on environmental compliance
		Development of county environmental action plan and status of environment report
		Monitoring environmental compliance
		Mainstreaming ESIA/EA into county plan
		Training of county environmental commitee
		Sold waste infrastructure development
		Environmental policy developed
		Sensitize and empower community groups on environmental issue
		Increase forest cover
		Gazetted county forest
		Tree nursery establishment
		Woodlot establishment
		County forest management plan
		Green school program
		Marine ecosystem protection
		Development of urban forest
		Monitoring of county forest
		Degraded area rehabilitation
	Flagship project	Commissioning of waste to energy project

4. Delivery Mechanisms for CCAP

4.1 Enabling Factors

4.1.1 Enabling Policy and Regulation

County Governments are the “first line of responders” to community challenges including negative impacts of climate change like droughts, floods, sea level rises and resource conflicts. In any case, climate-sensitive sectors such as, agriculture, health, disaster management and water services are now devolved. An enabling policy environment provides counties with an opportunity for effective response to climate change. Article 185 and 186 of the Constitution of Kenya (2010) empowers County Governments to develop policies for better implementation of devolved functions. The national Climate Change Act (2016) also mandates counties to mainstream climate change actions in their policies, plans, and budgets.

The County Government of Kilifi has initiated measures aimed at strengthening its climate governance. These include, among others, mainstreaming climate change in the Kilifi County Integrated Development Plan (CIDP; 2023-2027) and adoption of other climate governance frameworks including the Kilifi County Climate Change Policy (2023), Kilifi County Climate Change Act (2021) and Kilifi County Climate Change Fund (Rules and Regulations). The Act puts in place a framework for facilitating communities to respond effectively to effects of climate change through appropriate adaptation and mitigation measures. The Act also creates an elaborate institutional structure to drive implementation. Most importantly, the Act creates a county-level Climate Change Fund. Among other sources of finance, the Fund will benefit from moneys appropriated annually by the County Assembly, moneys received from the National Climate Change Fund, moneys from international climate finance mechanisms, and donations by development partners.

4.1.2 Mainstreaming in the Kilifi CIDP (2023-2027)

Climate change affects fundamental economic, social and environmental aspects of Kilifi County’s development. Climate change is multi-faceted and impacts all sectors of the County economy. To achieve scale and impact, climate change actions must be integrated in all county programs. For coordinated actions on climate change and to ensure that all sectors significantly contribute to climate change adaptation and mitigation, such actions must be included in all county planning and budgeting processes.

The Kilifi County Integrated Development Plan (CIDP; 2023-2027) is the county’s 5-year master plan for socio-economic development. The CIDP forms the basis for allocation of resources to County projects. It is one of the primary development blue prints for counties to engage the public and prioritize critical areas of development. Indeed, the County Government Act (2012) and Public Finance Management Act (2013) provide that no public funds shall be appropriated outside a planning framework developed by the county

executive committee and approved by the county assembly. The county planning framework integrates economic, physical, social, environmental and spatial matters. The CIDP informs the county's budget which is based on the annual development priorities and performance targets. The CIDP is also a critical entry point for the public engagement in the county's planning and development. Indeed, the CIDP provides a platform for county residents to identify, consolidate and inform climate actions in the CIDP.

The Annual Development Plan (ADP) contains strategic priorities for the medium term and reflects the county government's plans for the specified year. It is usually derived from the 5-year CIDP and it informs the following: strategic priorities to which the program will contribute; services or goods to be provided; measurable indicators of performance; and allocated budget estimates to the program. The County Executive shall submit the ADP to the County Assembly for approval by 1 September in each year, with a copy to the Commission on Revenue Allocation and National Treasury.

4.1.3 Multi-stakeholder participation processes

Public participation is a thread that runs throughout the Constitution of Kenya (2010) and other enabling legislation, among others, the County Government Act (2012) and the Public Finance Management Act (2013). The climate crisis cannot afford the loss of any allies. Therefore, there is need to involve relevant stakeholders in identifying climate risks, prioritizing climate response actions, implementation of climate change adaptation and mitigation programs, evaluation of program impacts and tweaking response strategies based on lessons learnt. It is particularly important to involve frontline communities affected by climate change for they also have ideas on how to better design and implement government response measures. The following agencies will play the role assigned to them as stated below:

National Government: The role of Government Ministries, Departments and Agencies will be to develop and establish standards and norms for ensuring mainstreaming, prevention and adaptation to climate change and further provide technical support in implementing adaptation and mitigation strategies.

County Governments: The role of the county will be to create a favorable environment for all stakeholders to thrive. County Government will establish, promote and implement set standards and norms, prepare and implement actions plans, facilitate public education on climate change. Within this policy framework, Governments at the two levels will foster linkages with various development partners to provide financial, material and technical support as well as shape capacity for sustainability. The County government will facilitate research in collaboration with research institutions and academia

Development Partners: Development partners will play a complementary role towards realization of development of the goals and objectives of this policy. In particular, they will assist in leveraging resources and facilitating capacity support for climate change resilience, prevention and adaptation. The role of non-state actors will be to collaborate

with Government to mobilize communities and resources, disseminate the policy and participate in capacity building for both for all stakeholders. This support will include awareness in the various aspects of climate change.

Private sector: The private sector has played an important role in helping communities such as small holder farmers adapt to climate change while simultaneously supporting market integration.. This policy prioritizes actions such as climate smart agricultural technologies, value addition, and extension that are of interest to the private sector.

Communities: Public policy is formulated for the protection of communities. Citizens are the main pillars of the policy and have to actively be involved in the implementation of this policy including being actively engaged in monitoring, evaluation and learning. They have a duty to be engaged and be allowed to contribute effectively. Communities are expected to exercise their sovereignty by holding duty bearers and all other agencies to account.

4.1.4 Resource mobilization strategy

Devolution of climate funds remains a major priority for climate financing in Kenya because it ensures that resources reach the neediest. County governments provide a good opportunity to create institutional linkages for devolving funds from the national to local level. Climate finance is also critical in enabling Kilifi County to achieve goals set out in in the third generation County Integrated Development Plan (CIDP 2023-2027), Vision 2030 economic blueprint, Sustainable Development Goals (SDGs), the 2015 Paris Agreement, and the African Union Agenda 2063.

With the onset of climate change, Kilifi and other counties have established local climate change fund through the Climate Change Fund Mechanisms (CCCF). CCCF is a mechanism through which counties can create, access and use climate finance from different sources to build communities resilience and reduce vulnerabilities to a changing climate in a more coordinated way. The county climate finance mechanisms creates the county climate finance committees consisting of the ward planning committees to ensure the following principles are well inculcated in the administration of the funds.

Kilifi County Climate Change Act (2021) mandates the County Government to publish a County Climate Finance framework every three (3) years. Among other objectives, the framework seeks to unlock financial resources necessary for the implementation of the County Climate Change Policy and County Climate Change Act, establish an optimal mix of climate finance tools thereby making climate change investments more attractive to private investors, coordinate the implementation and reporting mechanisms of climate finance in the county through a responsive monitoring and evaluation framework, provide assurances that the climate funds are used effectively and guarantee that climate change activities are undertaken efficiently and promote fair access to climate funds so that vulnerable communities have equal access through affirmative action.

4.1.5 Climate Information Services and Climate Data Access

Kenya Meteorological Department (KMD) has been sharing climate information with stakeholders for many years but the uptake has been limited due to a number of reasons including, among others, relevance of the climate information services and channels of communication. This Action Plan recommends the development of Kilifi County Climate Information Services (CIS) Plan. The CIS Plan will collect, consolidate, analyze and disseminate down-scaled weather and climate information which can support ward, sub-county and county-level decision making processes. Most importantly, the CIS Plan will give priority to information that can enable farmers, fisher folks, traders and others make climate-smart decisions well advance of slow-onset disasters like floods and droughts.

This Action Plan is aware that timely communication of climate information helps prevent the economic setbacks and humanitarian disasters that can result from climate extremes and long-term climate change. The CIS Plan will also play a crucial role in development planning—both for managing development opportunities and risks and as well as mitigation and adaptation. Operationalization of the CIS Plan is resource-intensive and requires financial and human resources that are mobilized well beyond the government provisions. This is where collaboration between state and non-state actors in Kilifi comes in.

4.1.6 Resilience Planning Tools

Resilience is a multidimensional issue that is based on human, social, natural, productive, financial and political capital – yet the institutions involved in implementing resilience interventions have their own sector-specific views on which one of these building blocks counts more than others. In such a situation, a shared understanding of the multi-pronged nature of resilience can help county governments to position different projects as different building blocks of resilience and understand how they fit into the overall picture. There are several resilience planning tools in use by both state and non-state actors. Therefore, this Action Plan will use a mix of these planning tools, albeit within the county planning and budgeting cycle.

Planning and budgeting tools: The CIDP forms the basis for allocation of resources to County projects. It is one of the primary development blue prints for Counties to engage the public and prioritize critical areas of development. The CIDP integrates economic, physical, social, environmental and spatial matters. The CIDP informs the county's budget which shall be based on the annual development priorities and performance targets. The CIDP is also a critical entry point for the public engagement in the county's planning and development. Conversely, the Annual Development Plan (ADP) contains strategic priorities for the medium term and reflects the county government's plans for the specified year. Once the ADP priorities are subjected to budget ceilings, the next step is development of annual budget to resource the implementation of priority actions, including climate change adaptation and mitigation.

The Integrated Food Security Phase Classification (IPC) is an innovative multi-stakeholder initiative to improve analysis and decision-making on food security and nutrition. Using the IPC classification and analytical approach, governments, UN agencies, NGOs, and other stakeholders work together to determine the severity and extent of acute and chronic food insecurity and acute malnutrition situations within countries, according to internationally recognized standards.

Early Warning Bulletins: The National Drought Management Authority Act (2016) mandates the Authority to exercise overall coordination over all matters relating to drought risk management and to establish mechanisms, either on its own or with stakeholders that will end drought emergencies in Kenya. The Government, together with development partners under the Kenya Food Security Steering Group (KFSSG) in collaboration with the respective County Steering Groups (CSGs) routinely carry out the seasonal Long /Short Rains Food and Nutritional Security Assessment. NDMA also publishes Drought Early Warning Bulletin especially focusing on the counties at risk. It is this information that informs the decision to declare “drought a national disaster” by the President following which certain drastic response measures are initiated. NDMA also relies on the IPC data.

Community Managed Disaster Risk reduction (CMDRR) is an empowering process where a community systematically manages its disaster risks for increased resilience. It places community at the center of participatory disaster risk assessment, planning and implementation. It emphasizes the importance of communities being empowered to prepare and respond to micro level hazards and link their efforts to government processes for sustainability. Contingency plans and development plans generated from the CMDRR process often inform ward-level priorities by the county government or even development partners.

Participatory Climate Risk Assessment (PCRA) Tool: Kilifi County PCRA report informed the priorities in this Action Plan. Climate risk assessment is essential in identifying climate risks, impacts and priority resilience options to build local capacities through locally-led action. The participatory climate risk assessment (PCRA) results in the development of a county climate risk assessment report, which identifies the key climate risks for the county as well as strategic investment areas for climate resilience. Other resilience planning tools include Sustainable Livelihoods Framework, the Coping Strategy Index (CSI), vulnerability assessment and Multidimensional Poverty Assessment Tool.

Kilifi County Climate Finance Framework (2022): The Kilifi County Climate Change Act (2020) mandates the County Government to publish a County Climate Finance framework every three (3) years. Among other objectives, the framework addresses the status of climate change awareness in the county, impact of climate change in the county, human activities in the county that impact climate change, and climate change adaptation and mitigation activities relevant to the county. Therefore, the Climate Finance Framework compliments both the CIDP and Action Plan in coming up with priority actions on climate response.

4.1.7 Measurement, Reporting and Verification

Monitoring and Evaluation System (NIMES) as a mechanism for tracking climate finance implementation under the Medium-Term Plan (MTP IV) of Kenya's Vision 2030. At the county level, results management is undertaken through the County Integrated Monitoring and Evaluation System (CIMES) that is linked to NIMES. However, incomplete policy reform has meant that majority of counties lack dedicated M&E departments and, where they exist, they seldom have adequate capacity to effectively discharge their mandate.

This Action Plan reinforces Kenya's global commitments regarding climate change reporting. Kenya is part of the transparency framework under the Paris Agreement and is expected to provide frequent information (at least biennially) on the support required and needed under Articles 9 (Finance for mitigation and adaptation) and technology development (10) and transfer (11) capacity building. The Public Finance Management Act, 2012 also provides a framework for tracking and reporting on climate finance. Besides, the CIDP allows counties to develop SMART indicators on climate change to help track climate response.

The Financing Locally-Led Climate Actions (FLLoCA) Monitoring and Evaluation Manual also helps program implementers (like Kilifi County), to understand M&E procedures and processes for the program, decide how progress will be monitored to enable any adjustments where necessary and gather the necessary information to be used during various evaluation studies. Taken together, this Action Plan seeks to support a robust monitoring and evaluation system that is linked to CIMES to track the impacts of climate investments in the county. The M&E System will also track the effectiveness of climate actions being implemented, lessons learnt and necessary tweaks based on what is working and what is not working.

4.2 Implementation and Coordination Mechanisms

4.2.1 Coordination structures

Climate risk management strategies in Kilifi County are implemented mainly through the collaboration between various actors, both state and non-state. Government departments mainly provide technical support and policy direction in collaboration with non-state actors provide the research, funding, and implementation for the adaptations. Even though there is a good deal of collaboration among the various stakeholders mentioned, there is lack of an institutionalized framework for structuring and organizing the collaborations between actors. This lack of structured interaction contributes to a lack of accountability on the part of the actors.

Institutional arrangements are critical in implementation and coordination of climate change actions. The cross-cutting nature of climate change requires that all sectors are involved at different levels in implementation. It is drawing from the partners' knowledge,

expertise and financial contributions that will make it possible for the county to realize its climate change goals. The implementation of the policy, and the roles assigned to each implementing agency will respect the functional distribution of roles between the two levels of government as provided for in the Fourth Schedule to the Constitution (2010).

4.2.1.1 Directorate of Climate Change

Kilifi County Climate actions are being spearheaded by the Climate Change Directorate. The Directorate is domiciled within the County Department of Water, Environment, Forestry, Climate Change, Natural Resources and Solid Waste Management. The Directorate's core mandate is to mainstream climate actions in planning and budgeting across all sectors of the county government. It works closely in collaboration with other climate change coordination structures established under the Kilifi County Climate Change Act (2021) and provides the link across county departments.

4.2.1.2 County Climate Change Steering Committee

This is a higher level structure that provides leadership and support to county climate change actions. Some of their functions as per the act are

- Oversee the mainstreaming of climate change adaptation and mitigation in the county planning and budgeting cycle;
- Coordinate the formulation and implementation of the Climate Change Policy, Act, Rules & Regulations, Climate Finance Framework, Climate Information Service Plan and associated frameworks;
- Ensure that projects approved for funding conform to the Climate Finance Framework;
- Oversee execution of the County Climate Finance Budget in compliance with the Public Finance Management principles under article 201 of the Constitution of Kenya;
- Oversee the coordination of research and development for climate finance in the County;
- Mobilize additional funding for projects, programs and activities listed in the Climate Finance Framework;
- Provide the essential linkages between the County Executive Committee and the County Assembly with regard to management of the Fund;

4.2.1.3 County Climate Change Planning Committee

This comprises of sectoral County and National Directors to provide technical support. Some of their functions as per the Act are

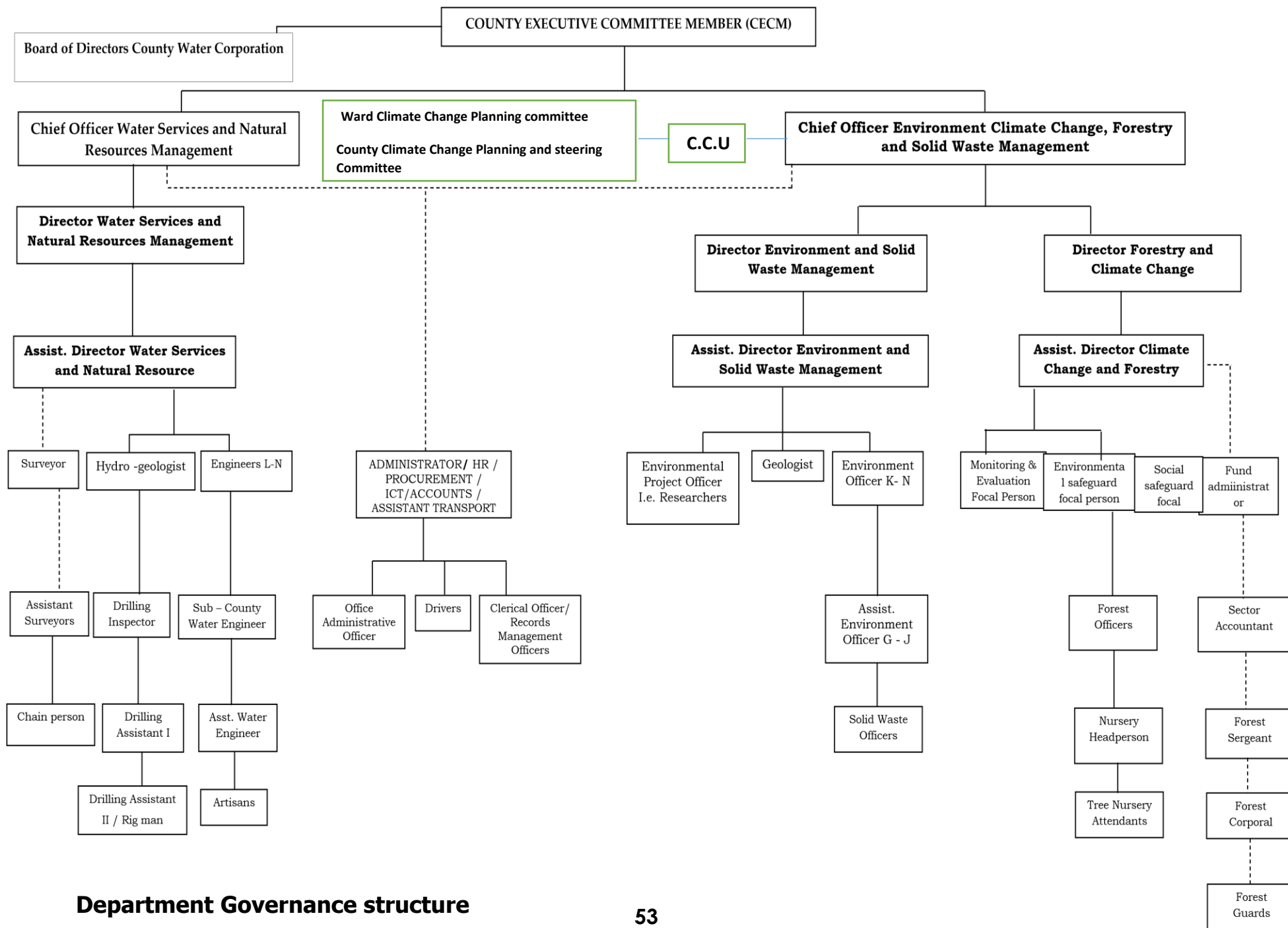
- Develop a Climate Finance Framework for the County;
- Develop, consultatively, Eligibility Criteria for selecting and prioritizing climate change projects and programs for approval by the Steering Committee;

- Evaluate, validate and recommend climate change proposals developed by the Ward Planning Committee and submit to the Steering Committee for approval;
- Oversight to the project evaluation process by the Ward Planning Committee and prepare appropriate reports to the Climate Change Fund Steering Committee;
- Facilitate and monitor the implementation of projects and programs financed by the Fund in the County;
- Develop a Climate Finance research priority needs for the county;
- Develop a Climate Awareness Strategy for the County;
- Develop a Strategic Plan and Service Charter for the Fund;
- Assign and coordinate technical assistance from County departments to projects funded under this Act;
- Facilitate the coordination of Climate Finance projects and programs with other programs in the County

4.2.1.4 Ward Climate Change Planning Committee

This is locally led structure to spear head locally led climate actions at ward level. The Act has given more provision for ward participation in sustainable climate change adaptation and mitigation by participating in climate risk/hazard assessment, look into historical timeline, trend and future climate projection and from well informed perspective prioritize climate change adaptation to build local adaptive capacity. Some of their functions as per the act are

- Consult with the community on the relevant Climate Finance activities at the Ward level;
- Facilitate public participation at the Ward level to develop and prioritize proposals for investments in public goods that promote climate change mitigation and adaptation;
- Receive project proposals from the community at the Ward level and develop technical components of the project proposals;
- Monitor project implementation at the Ward level;
- Prepare the Climate Finance Budget at the ward level;
- Ensure compliance with the provisions in this Act and regulations made hereunder;
- Prepare ward level project reports



4.3 Implementation Matrix

Table 9: Implementation Matrix

	Sector	Program	Sector priorities in the CIDP (Key Output)	Timeframe	Budget (Ksh. M)
1.	Social Protection, Culture and Recreation	Child Protection	Sensitization forums held	5 years	25
			Modern child rescue centers constructed and operationalized	5 years	25
			Child participation channels/ platforms established	5 years	5
			Mandatory ECDE school enrollment and retention policy developed	5 years	5
			Kilifi County Child Protection Policy developed	5 years	5
		Social protection services	Sensitization forums	5 years	150
			PWD Empowerment Center constructed and operationalized	5 years	100
			Cash transfers to PWDs, Elderly Citizens and OVCs and widows provided	5 years	225
			Capacity building on income generating activities	5 years	25
			Social Welfare and Cash Transfer Policy developed	5 years	15
			Gender Policy developed	5 years	2
		Youth development	Short and labor-intensive employment opportunities Offered	5 years	125
			Rehabilitation centers constructed and operationalized	5 years	180
			Enhanced campaigns against social-interruptive activities (gambling)/ betting and control regulation)	5 years	25
			Domesticate Kenya Youth Development Policy	5 years	3
		Culture and Arts	Cultural heritage sites restored, upgraded and gazette	5 years	260
			Cultural days and events celebrated	5 years	125
			County Database of Indigenous Knowledge (IK) associated genetic resource	5 years	250
			Establishment of art and cultural research center	5 years	20
			Protection and Promotion of sacred Kaya Forests	5 years	20
			Cultural exhibitions held	5 years	5
			Policy and legal frameworks developed	5 years	6
			Establishment of art and cultural research center	5 years	100
			Cultural music groups formed and trained	5 years	10
		Sports Development	Modern sports facilities rehabilitated and established	5 years	1875

			Operational talent academy	5 years	60
			Talent management framework developed	5 years	385
			Sports policy and frame work developed	5 years	6
		Disaster Strengthening disaster risk management	DRM infrastructure developed	5 years	822
			Human resource capacity strengthened (DRM personnel, DRM sensitization and DRM policies)	5 years	107
			Early warning systems strengthened	5 years	200
			Disaster preparedness for effective response and recovery strengthened (drills and evacuation routes)	5 years	750
			Community awareness on disaster risks Strengthened	5 years	182
2.	Agriculture, Livestock Development And Fisheries	Crop production	Irrigation schemes developed /rehabilitated	5 years	1538
			Water harvesting structure for irrigation developed	5 years	305
			Inputs subsidies for farmers provided.	5 years	1140
			Extension services staff recruited	5 years	150
			Extension staff trained	5 years	10
			Farmers reached through extension	5 years	120
			Weather advisories disseminated	5 years	15
			Agricultural training center operational	5 years	647.25
			An agricultural, livestock and maritime research institute center incollabotation with higher institutions of leaning established	5 years	10
			Acts /policies/strategies /regulations and action plans developed.	5 years	10
			Soil fertility management technologies dessimented	5 years	10
			Farms with terraces done	5 years	4
			Farmers accessing agricultural mechanization services	5 years	500
			Tree seeding planted	5 years	505
			Traditional high value crops /seeds /cuttings/vines	5 years	50
			Marketing infrastructure developed	5 years	35
			Farmers accessing markets for their productions	5 years	10
			Value change coordination forums held	5 years	12
			Agroprocessing plants functional	5 years	1500
			Value addition equipment purchased	5 years	70
			Marketing organization functional	5 years	14
			Farmers accessing affordable financial services	5 years	8

	Livestock Production	Acreage of pasture and fodder established	5 years	35
		Production equipment used	5 years	3.5
		Mechanization equipment used	5 years	1.75
		Storage facilities constructed and in use.	5 years	35
		Water harvesting structures developed and in use	5 years	875
		Improved breeds distributed	5 years	804.6
		Livestock enterprises/breeds introduced	5 years	0
		Farmers reached through input subsidies	5 years	2
		Input distributed to farmers.	5 years	0
		Extension services staff recruited	5 years	2.5
		Extension staff trained	5 years	14
		Farmers reached	5 years	10
		Equipment distributed for extension service delivery	5 years	20
		Animal vaccination campaigns undertaken	5 years	42
		Vet nary laboratory equipped and operationalized	5 years	30
		Market infrastructure developed	5 years	145
		Value chain coordination forum held	5 years	0
		Livestock processing plant functional	5 years	41
		Value addition equipment purchased	5 years	2450
		Marketing organizations functional	5 years	0
		Famers accessing market	5 years	2.9
		Livestock export processing zone established	5 years	10
	Fisheries Production	Farmers adopting commercial aquaculture	5 years	107
		Farmers in mariculture production	5 years	12
		Fish hatcheries operational	5 years	13
		Fish landing sites fisheries infrastructure developed	5 years	219
		Fishers using modern fishing and production technology	5 years	399
		Marine fisheries resources mapped, regulated and licensed	5 years	55
		Groups supported in fisheries production	5 years	474
		Extension service staff recruited	5 years	10.5
		Extension staff trained	5 years	6
		Fisher folk reached	5 years	12

			New fisheries products produced	5 years	21
			Fish farmers reached through inputs subsidies	5 years	84
			Marketing infrastructure developed	5 years	65
			Fish processing plants functional	5 years	70
			Value addition equipment purchased	5 years	38
			Functional marketing organizational	5 years	19.5
			Fisher folk accessing marketing	5 years	12.5
			Farmers accessing financial services	5 years	11.5
			Effective fisheries community governance structure	5 years	23
3.	Lands, Housing, Physical Planning and Urban Development	Decent and Affordable Housing	Appropriate and alternative building technologies promoted	5years	64
			Roads in informal scheme constructed	5years	910
			Sanitation facilities constructed	5years	90
			Informal settlement surveyed	5years	42
		Lands Management and Administration	Acreage of land surveyed	5years	300
			Land disputes resolved	5years	0
			Land banking	5years	20
			Settlement schemes surveyed and allocated	5years	55
			Land policies developed	5years	38
			Adjudication sections completed	5years	50
			Operational land systems developed	5years	65
				5years	
		Urban planning and development	Panned human settlements	5years	1320
			Urban roads constructed	5years	3800
			Storm water drainage developed	5years	285
			Jobs created	5years	25
			Recycling initiative developed	5years	300
4.	Energy and Infrastructure	County road network	Roads constructed/ maintained	5years	5,627.5
		Energy access	Renewable energy infrastructure developed	5years	606
			Capacity building of technicians on renewable energy	5years	25
			Renewable energy policy and legislations developed/reviewed	5years	6

			No. of feasibility study on renewable energy reports developed	5years	20
			No. of feasibility study reports on adoption of solar cookers in kilifi county developed	5years	7
			No. of solar mini-grid mapping reports developed	5years	35
			No. of feasibility study reports on biomass energy generation developed	5years	11
			No. of feasibility study reports on the impacts of solar streets lights and solar high mast in the county developed	5years	7
			No. of rural energy development action pan documents developed	5years	25
			Increased adoption and clean cooking technology	5years	15
			Increased adoption of clean cooking energy	5years	47
			Capacity building of technicians on clean cooking technology	5years	254
5.	Trade, Tourism, Industrialization And Cooperatives Development	Trade development and investment promotion	Trading spaces created	5years	450
			Markets refurbished	5years	75
			Abolition blocks constructed	5years	55
			Fruit ripening facilities established	5years	100
			Cold rooms and storage facilities constructed	5years	280
			Trade fairs and exhibition organized	5years	50
			Policies and regulations reviewed	5years	15
			Innovation hub created	5years	150
			Loans accessed by SMEs	5years	2332.148
		Tourism development	Tourisms fairs and expose attended/ organized	5years	250
			Tourism Products packaged and marketed	5years	300
			Tourism guidelines developed	5years	5
			Surveys / research	5years	8
			Stakeholders meeting /forums held	5years	15
			Eco tourism products enhanced	5years	14
			Beach safety watch towers erected	5years	15
			Beach public toilets constructed	5years	100
			Cultural heritage sites refurbished	5years	12
			Cultural Tourism Villages/centers developed	5years	50
		Cooperative Development	Develop County Cooperative legislations and Policies	5years	60

			Promotion of new cooperative enterprises	5years	25
			Restructuring of strategic viable cooperative societies	5years	250
			Cooperative awareness and publicity	5years	45
			Cooperative education guideline developed	5years	10
			Training manual for cooperative reviewed	5years	10
			Member Education days	5years	35
			Enhance cooperative market access	5years	100
			Cooperative warehouse refurbished	5years	50
			Cooperates trained on value chain development and emerging business models	5years	10
			Cooperatives supported with storage and processing equipments	5years	10
			Cooperative marketing strategy developed	5years	5
			Value chain cooperative with strategic and business plan	5years	20
6	Health	Preventive and Promotive Health Services	No. of HCWs trained on maternal, neonatal services	5years	37
			No. of awareness forums conducted	5years	14.6
			No. of HCWs trained on child health services	5years	16.5
			No. of community units trained	5years	11.5
			Maternal infant and young child nutrition scaled up	5years	58.9
			Household trained on micronutrient supplementation	5years	3.2
			Integrated management of acuity malnutrition strengthened	5years	64.9
			Nutrition in education and early childhood development promoted	5years	68
			Enhanced advocacy sectorial and multisectorial coordination for improved nutrition outcome	5years	8.12
			Enhanced capacity on nutrition surveillance information system leaning and research	5years	2.4
			Supply chain management for nutrition commodities and equipment strengthened	5years	7.8
			Disease detected and controlled	5years	1.26
			Mother to child transition and prevented. Pmtct	5years	34.4
			Percentage of pregnant women receiving intermitted preventive treatment during ANC visits	5years	29
			Percentage of child under 1 year issued with long lasting insect sides nets	5years	11.2
			Percentage of pregnant women consuming IPTP	5years	12.9

			Percentage of pregnant women issued with long lasting insect side treatment nets	5years	3.9
			Percentage of household sprayed with insect sides	5years	2.09
			Water treatment commodities distributed at household level	5years	7.47
			Proportion on school with functional toilets	5years	14.4
			No. on CHVs conducting indigent mapping and registration of NHIF	5years	35
			No. of community sensitization forums on UHC/NHIF service	5years	4.5
				5years	
		General administration planning and support service services	No. of HRH strategic plans developed	5years	1.1
			No. of policy regulation and bills enacted	5years	14.4
			No. of hospital boards trained and gazetted	5years	3.94
			No. of primary level health facilities management committees trained and gazetted	5years	36.05
7	EDUCATION	Vocational training and education	ICT laboratory constructed	5years	310
			Training workshop constructed	5years	324
			Hostels constructed	5years	206
			Toilets constructed	5years	96
			Tools and equipment provided	5years	410
			Modern trades and programs introduced	5years	108
			Sensitization of VT program me conducted	5years	122.5
			Instructors employed	5years	105
			Instructor trained	5years	37.5
				5years	
		Preprimary education	ECDE teachers and coordinators employed	5years	523
			ECDE teachers and coordinators trained	5years	21
			Community sensitized on ECDE program	5years	8.75
			Preprimary school policy developed	5years	2
			Feeding program introduced	5years	500
8	WATER ENVIROMENT NATURAL RESOURCES	Water services	Water infrastructure developed	5years	955
			Community based water management commeeett established	5years	70
				5years	

	AND SOLD WASTE MANAGEMENT	Sanitation services	Sanitation infrastructure developed	5years	1500
			Stakeholders engagement	5years	4
			Sanitation policies developed	5years	25
		Environmental conservation and management	Establishment of the climate change information center	5years	125
			Operationalization of climate change unit	5years	25
			Climate change action plan	5years	50
			Local lead climate action	5years	500
			Community members trained appropriately on modern technology on communicating climate change issues	5years	25
			Capacity build of climate change ward committee	5years	5
			Mainstreaming of climate change in planning and budgeting process	5years	25
			Development and implementation of the county determined contribution plan	5years	50
			Gazettement and training of county climate change and steering and plaining committee	5years	25
			Training and equipping of forest guide	5years	20
			Training staff on environmental compliance	5years	5
			Development of county environmental action plan and status of environment report	5years	70
			Monitoring environmental compliance	5years	180
			Mainstreaming ESIA/EA into county plan	5years	100
			Training of county environmental committee	5years	25
			Sold waste infrastructure development	5years	800
			Environmental policy developed	5years	25
			Sensitize and empower community groups on environmental issue	5years	100
			Increase forest cover	5years	80
			Gazetted county forest	5years	150
			Tree nursery establishment	5years	35
			Woodlot establishment	5years	80
			County forest management plan	5years	25
			Green school program	5years	35
			Marine ecosystem protection	5years	50
			Development of urban forest	5years	75
			Monitoring of county forest	5years	25

		Degraded area rehabilitation	5years	250
	Flagship project	Commissioning of waste to energy project	5years	800

Annexes

Annex 1: Participants List

Table 10: Participants List

KILIFI NORTH SUB-COUNTY								
Date	Venue and Date	Ward	Name	ID Number	Mobile Number	Gender	Disability	Age
18th and 19th May 2023	Gede polytechnic	DABASO	Grace furaha sauti	25828953	723376862	Female	No	Below 35
	Gede polytechnic	DABASO	Elizabeth mwandurya	32375607	707058483	Female	No	Below 35
	Gede polytechnic	DABASO	Grace kadzo charo	26257743	702737877	Female	No	Below 35
	Gede polytechnic	DABASO	Kombe charo yeri	21940314	111895436	Male	No	Above 35
	Gede polytechnic	DABASO	Neville gari kai	1989070846	729218914	Male	No	Above 35
	Gede polytechnic	DABASO	Nancy mwangi heho	4735187	719509223	Female	No	Above 35
	Gede polytechnic	DABASO	Jackson mwamure	11876898	729496489	Male	No	Above 35
	Gede polytechnic	DABASO	Madaraka katana	35083391	743113171	Male	No	Above 35
	Gede polytechnic	DABASO	Charo ngumbao	4631761	708584235	Male	No	Above 35
	Gede polytechnic	DABASO	Mohammed nyae ngoda	24669805	725971861	Male	No	Above 35

	Gede polytechnic	DABASO	George katana karema	11085284	722636977	Male	No	Above 35
	Gede polytechnic	DABASO	Emmanuel karisa	5039744	710252415	Male	No	Above 35
	Gede polytechnic	DABASO	Charity chula	2124997	717466895	Female	Yes	Above 35
	Gede polytechnic	DABASO	Saumu yaa	20150058 594	724420989	Female	No	Above 35
	Gede polytechnic	DABASO	Ashleyna kazungu	35662108	795876689	Female	No	Below 35
	Gede polytechnic	DABASO	Renson baya	11076494	738726330	Male	No	Above 35
	Gede polytechnic	DABASO	Arnold masha	25218961	722906861	Male	No	Above 35
	Gede polytechnic	DABASO	Jacob m. Sirya	23614513	726926062	Male	Yes	Above 35
	Gede polytechnic	DABASO	Jacinta khisa	27355579	789410107	Female	No	Above 35
	Gede polytechnic	DABASO	Tracy ayieko	34771942	791398456	Female	No	Below 35
20th and 22nd May 2023	Tezo cbo hall	TEZO WARD	Francis k. Mwangudza	26531494	711960859	Male	Yes	Above 35
20th and 22nd May 2023	Tezo cbo hall	TEZO WARD	Emmanuel h. Mabibo	14501102	705166233	Male	No	Above 35
		TEZO WARD	Maureen furaha	29515528	706087281	Female	No	Below 35
		TEZO WARD	Bernard kai	20192063	725436427	Male	No	Above 35
		TEZO WARD	Justine kazungu	22865830	724265810	Male	No	Above 35
		TEZO WARD	Michael d. Baya	21653732	715816111	Male	No	Above 35
		TEZO WARD	Vincent ruwa	25811640	711406919	Male	No	Above 35
		TEZO WARD	Juma mwagandi ali	29980722	703261601	Male	No	Below 35
		TEZO WARD	Dida tsingwa	5332629	720353826	Male	No	Above 35
		TEZO WARD	Winstone m. Chome	8458089	722597981	Male	No	Above 35
		TEZO WARD	Ashleyna kazungu	35662108	795875568 9	Female	No	Below 35

		TEZO WARD	Patience dhahabu	687217	720906891	Female	No	Above 35
		TEZO WARD	Josline mbuche	22066694	726164139	Female	No	Above 35
		TEZO WARD	Celistina thoya	11087286	724627969	Female	No	Above 35
		TEZO WARD	Eunice d. Tsuma	11760649	720649252	Female	No	Above 35
		TEZO WARD	Mary tabu bali	12845518	712268960	Female	Yes	Above 35
		TEZO WARD	James tsuma	24393491	729034264	Male	No	Above 35
		TEZO WARD	Tracy ayieko	34771942	791398456	Female	No	Below 35
		TEZO WARD	Arnold masha	25215902	708742456	Male	No	Above 35
		TEZO WARD	Jacinta khisa	27355599	722900686	Female	No	Below 35
		TEZO WARD	Jacob kazungu kahindi	502573	726780927	Male	No	Above 35
		TEZO WARD	Jacob sirya	23614513	726926062	Male	No	Above 35
15th and 16th May 2023	Watamu social hall	WATAMU WARD	Martin rutha kombe	39062067	740276172	Male	No	Below 35
		WATAMU WARD	Baraka kazungu	28987615	736400095	Male	No	Below 35
		WATAMU WARD	Erick katana	21838586	729544839	Male	No	Above 35
		WATAMU WARD	Shebwana d. Moh'd	9390816	716848428	Male	No	Above 35
		WATAMU WARD	Henrita jefwa	23579380	712107021	Female	No	Above 35
		WATAMU WARD	Esther jumwa	22257112	725206810	Female	No	Above 35
		WATAMU WARD	Rachael haro	11263087	716930176	Female	No	Above 35
		WATAMU WARD	Magrate mkutano	33028-	711242755	Female	No	Below 35
		WATAMU WARD	Kadide charo	2681137	721289854	Female	No	Below 35
		WATAMU WARD	Thomson c. Mwarome	6720331	710958244	Male	No	Above 35

		WATAMU WARD	Romvictor k said	5033789	792873285	Male	No	Below 35
		WATAMU WARD	Vincent n. Kahindi	30394746	102283295	Male	No	Below 35
		WATAMU WARD	Chengo aron	13141824	721351331	Male	No	Above 35
		WATAMU WARD	Rev. Philemon r. Gona	2123571	702982005	Male	No	Above 35
		WATAMU WARD	Lennox k. Katana	5016878	724060305	Male	No	Above 35
		WATAMU WARD	Samuel kapombe	11762574	729286540	Male	No	Above 35
		WATAMU WARD	Jane ngola	6704733	728791364	Female	Yes	Above 35
		WATAMU WARD	Kaneno justin	30077071	708409018	Female	No	Below 35
		WATAMU WARD	Ashleyna kazungu	35662108	795875689	Female	No	Below 35
		WATAMU WARD	Emmanuel gona	29752108	715131187	Male	No	Below 35
		WATAMU WARD	George kikami	14500293	725495258	Male	No	Above 35
		WATAMU WARD	Racheal sombo	13853512	722131569	Female	No	Above 35
		WATAMU WARD	Msanzu karisa	23579380	715540098	Male	No	Above 35
25th and 26th May 2023	Joy fellowship church	MNARANI WARD	Francis c. Tunje	23671690	713745375	Male	No	Above 35
		MNARANI WARD	Ngala m. Mwangandi	10830378	711914892	Male	No	Above 35
		MNARANI WARD	Gladys k. Kombe	8657963	723100837	Female	No	Above 35
		MNARANI WARD	Wanakai godwin	38969434	111723484	Male	No	Below 35
		MNARANI WARD	Mariamumicheal	10304060	795523142	Female	No	Above 35
		MNARANI WARD	Raphael musembi	13626004	726947342	Male	No	Above 35
		MNARANI WARD	John m. Karisa	22538266	723071776	Male	No	Above 35
		MNARANI WARD	Juma kazungu	29723793	726836083	Male	No	Above 35

		MNARANI WARD	Daniel chai kalama	35929316	724430810	Male	No	Below 35
		MNARANI WARD	Shalfa athumani mwarumbamba	33167498	112140422	Female	No	Below 35
		MNARANI WARD	Margaret maria juma	2473940	714201290	Female	Yes	Above 35
		MNARANI WARD	Kennedy nyundo	37701678	715890541	Male	No	Below 35
		MNARANI WARD	Zebedi sanchez olianji	35987979	797223368	Male	No	Below 35
		MNARANI WARD	Peter yaa mangi	31539755	768019927	Male	No	Below 35
		MNARANI WARD	Joshua koi mungumba	33292746	701919551	Male	No	Below 35
		MNARANI WARD	Ashleya kazungu	35662108	795875689	Female	No	Below 35
		MNARANI WARD	Lennox mwangolo	23988384	729711599	Male	No	Above 35
		MNARANI WARD	Tracy ayieko	34771942	791398456	Female	No	Below 35
		MNARANI WARD	Neema mwango	20170995	721226255	Female	No	Above 35
		MNARANI WARD	George kikame	14500793	733465996	Male	No	Above 35
		MNARANI WARD	Kenneth k. Rimba	10831248	723408462	Male	No	Above 35
23/05/2023- 24/05/2023	Kibarani YMCA hall	KIBARANI	Isaac Chome	24655536	725024372	Male	No	Above 35
		KIBARANI	John Kanuni Kenga	13141040	105110845	Male	No	Above 35
		KIBARANI	Regina Chishenga	11888782	72875988	Female	No	Above 35
		KIBARANI	Elizabeth Dzilani Mzungu	1385118	720641996	Female	No	Above 35
		KIBARANI	Margaret N.Mdzomba	3885807	712141438	Female	No	Above 35
		KIBARANI	Alice Kadzo Kithi	29426910	710857696	Female	No	Above 35
		KIBARANI	Rebecca Karisa Baya	32138415	792440571	Female	No	Below 35
		KIBARANI	Eve Dama Thuva	28789200	718970101	Female	No	Below 35

		KIBARANI	Lillian Kadzo Ngumbao	32634082	792432665	Female	No	Below 35
		KIBARANI	Rodgers Thoya	34137273	795875743	Male	No	Below 35
		KIBARANI	Benson Baya Kaingu	20027198	718213345	Male	No	Above 35
		KIBARANI	George Kikami	14500793	733465996	Male	No	Above 35
		KIBARANI	James Kazungu Ngoro	34767008 4	721998473	Male	No	Below 35
		KIBARANI	Sifa Harrison Kombe	23031438	791160466	Male	No	Above 35
		KIBARANI	Patrick Kabai Mungoma	30535496	717740198	Male	No	Below 35
		KIBARANI	Joel Colleen	36960446	723004961 1	Female	No	Below 35
		KIBARANI	Lennox Mwangolo Douglas	23988384	729711599	Male	No	Above 35
		KIBARANI	Henry Kingi Karisa	20911236	728945563	Male	No	Above 35
		KIBARANI	Hogla Karisa	24344526	791782132	Male	Yes	Above 35
		KIBARANI	Kelvin Mzungu Washe	12343563	115557516	Male	No	Above 35
23/05/2023	CDF NURSERY SCHOOL HALL	SOKONI	KENNETH KAMBO RIUMBA	10831248	723408462	Male	No	Above 35
		SOKONI	FRANCIS KAZUNGU YAAH	8466204	722772018	Male	No	Above 35
		SOKONI	BILLY MWATUA CHIRO	2134145	711833505	Male	No	Above 35
		SOKONI	WANAKAI GODWIN	38969434	111723484	Male	No	Below 35
		SOKONI	GUNGA KALUME BAYA	29547256	718571733	Male	No	Below 35
		SOKONI	MIRIAM MUHUGA	22529551	726538744	Female	No	Above 35
		SOKONI	MONICA MWENDA	11264253	727636966	Female	No	Above 35
		SOKONI	BAHSAN SAMOW ABDILLAHI	36788098	748408548	Female	No	Below 35
		SOKONI	VALENTINE AKINYI	39178504	793581859	Female	No	Below 35

		SOKONI	LYDIA K.KALUNDA	34519004	724500943	Female	No	Below 35
		SOKONI	PURITY DAMA KAZUNGU	34796493	741519599	Female	No	Below 35
		SOKONI	MARIAM KAMISA	20044119	710265709	Female	Yes	Above 35
		SOKONI	ASILI ABDALLA RANDANI	23404572	725350077	Male	No	Above 35
		SOKONI	HAROLD MWARUA	686464	725515623	Male	No	Above 35
		SOKONI	MUMINA ALASO MOHAMUD	22696456	723051896	Female	No	Above 35
		SOKONI	KHADZEEH SAMSON MENZAH	27001001	713512600	Male	No	Below 35
		SOKONI	JOEL DZANGA	26351021	788334820	Male	No	Below 35
		SOKONI	PATRICK B. SAFARI	26351021	728566323	Male	No	Above 35
		SOKONI	AMINA SAID	8527728	11507639	Female	No	Above 35
23/05/2023	JCC MINISTRY INTERNATIONAL	MATSANGO NI	ASHLEYNA KAZUNGU	35662108	795875689	Female	No	Below 35
		MATSANGO NI	WILMONT K.GOGO	2177264	721926163	Male	No	Above 35
		MATSANGO NI	CAROLINE L.A.KAI	25970321	728959413	Female	No	Below 35
		MATSANGO NI	PURITY KANZE	29045202	726055148	Female	No	Below 35
		MATSANGO NI	NORA NYADZUA	36518035	790664251	Female	No	Below 35
		MATSANGO NI	CHIKU A.MOHAMED	21635314	727249952	Female	No	Below 35
		MATSANGO NI	AMINA KALAMA	36136666	706392621	Female	Yes	Below 35
		MATSANGO NI	DOUGLAS MWODORI	39005026	746830342	Male	Yes	Below 35
		MATSANGO NI	ESTHER S.JEZANI	31940653	769981965	Male	Yes	Below 35
		MATSANGO NI	MAPENZI J.CHARO	9206719	708681246	Female	No	Above 35
		MATSANGO NI	HUSSEIN SHARIFF	25513044	780370790	Male	No	Above 35

		MATSANGO NI	CELINA NYADZUA YAWA	30141718	722155426	Female	No	Below 35
		MATSANGO NI	DAISY BAHATI CHARO	11765030	712787803	Female	No	Above 35
		MATSANGO NI	ALPHONCE NYANJE	9966174	712919198	Male	No	Above 35
		MATSANGO NI	ONYIMBI NELSON	31798080	702017444	Male	No	Below 35
		MATSANGO NI	ROBERT MUHUYE	26401533	714633688	Male	No	Below 35
		MATSANGO NI	PRUDENCE KWEKWE	24487206	725364977	Female	No	Above 35
		MATSANGO NI	ANNA TUNJE	32989748	715378625	Female	Yes	Below 35
		MATSANGO NI	STEPHEN KONDE	9773977	742666177	Male	No	Above 35
		MATSANGO NI	ANDREW THUVA	9207112	721326809	Male	No	Above 35
		MATSANGO NI	GEORGE SHIKAME	14500793	733465996	Male	No	Above 35

RABAI SUB-COUNTY								
Date	Venue	Ward	Name	ID Number	Mobile Number	Gender	Disability	Age
16/05/2023 - 17/05/2023	EAPC CHURCH MBUNGONI,	KAMBE/RIBE	Said Mwangiri Miriro	24661851	0716026332	Male	No	Below 35
16/05/2023 - 17/05/2023	EAPC CHURCH MBUNGONI,	KAMBE/RIBE	Caroline Mbeyu Banzi	24959510	0726980102	Female	No	Above 35
16/05/2023 - 17/05/2023	EAPC CHURCH MBUNGONI,	KAMBE/RIBE	Jacob Kondo Dule	13484033	0724477262	Male	No	Above 35
16/05/2023 - 17/05/2023	EAPC CHURCH MBUNGONI,	KAMBE/RIBE	Cornelius Kaulu Nyasih	27815788	0712947847	Male	No	Above 35

16/05/2023 - 17/05/2023	EAPC CHURCH MBUNGONI,	KAMBE/RIBE	Lameck Tsori Chengo	8526321	0723651366	Male	No	Above 35
16/05/2023 - 17/05/2023	EAPC CHURCH MBUNGONI,	KAMBE/RIBE	Peter Ogallo Wanyama	30314363	0700722511	Male	No	Below 35
16/05/2023 - 17/05/2023	EAPC CHURCH MBUNGONI,	KAMBE/RIBE	David Charo Jefwa	33198629	0711641829	Male	No	Below 35
16/05/2023 - 17/05/2023	EAPC CHURCH MBUNGONI,	KAMBE/RIBE	Pius Munga Mwadziwe	22530435	0702878103	Male	No	Above 35
16/05/2023 - 17/05/2023	EAPC CHURCH MBUNGONI,	KAMBE/RIBE	Lameck O. Kalama	21443717	0728520680	Male	Yes	Above 35
16/05/2023 - 17/05/2023	EAPC CHURCH MBUNGONI,	KAMBE/RIBE	Mwanaisha B. Baya	11264317	0727751825	Female	No	Above 35
16/05/2023 - 17/05/2023	EAPC CHURCH MBUNGONI,	KAMBE/RIBE	Janipher N. Mdzomba	38240713	0791215289	Female	No	Below 35
16/05/2023 - 17/05/2023	EAPC CHURCH MBUNGONI,	KAMBE/RIBE	Joshua Chitimba Kazungu	33877359	0742707602	Male	No	Below 35
16/05/2023 - 17/05/2023	EAPC CHURCH MBUNGONI,	KAMBE/RIBE	Juma Nzaro	34034055	0742710429	Male	No	Below 35
16/05/2023 - 17/05/2023	EAPC CHURCH MBUNGONI,	KAMBE/RIBE	Zainab Kadzo	26921130	0728417594	Female	No	Above 35
16/05/2023 - 17/05/2023	EAPC CHURCH MBUNGONI,	KAMBE/RIBE	Joseph Hanjari	27901317	0714725035	Male	No	Below 35

16/05/2023 - 17/05/2023	EAPC CHURCH MBUNGONI,	KAMBE/RIBE	Matano Mboshe	8437079	0710198662	Male	No	Above 35
16/05/2023 - 17/05/2023	EAPC CHURCH MBUNGONI,	KAMBE/RIBE	Mariam Ali	29026226	0718880507	Female	No	Below 35
16/05/2023 - 17/05/2023	EAPC CHURCH MBUNGONI,	KAMBE/RIBE	Joyce M. Manguya	13626558	0704222604	Female	Yes	Above 35
16/05/2023 - 17/05/2023	EAPC CHURCH MBUNGONI,	KAMBE/RIBE	Margret Mbaitah	11495566	071810061	Female	No	Above 35
16/05/2023 - 17/05/2023	EAPC CHURCH MBUNGONI,	KAMBE/RIBE	Murira Kahindi Ali	11375393	0715372827	Male	No	Above 35
18/05/2023 - 19/05/2023	MSUFINI CHURCH HARVEST							
18/05/2023 - 19/05/2023	MSUFINI CHURCH HARVEST	MWAWESA WARD	Said Mwangiri Miriro	24661851	0716026332	Male	No	Above 35
18/05/2023 - 19/05/2023	MSUFINI CHURCH HARVEST	MWAWESA WARD	Caroline Mbeyu Banzi	24959510	0726980102	Female	No	Above 35
18/05/2023 - 19/05/2023	MSUFINI CHURCH HARVEST	MWAWESA WARD	Jacob Kondo Dule	13484033	0724477262	Male	No	Above 35
18/05/2023 - 19/05/2023	MSUFINI CHURCH HARVEST	MWAWESA WARD	Margret Mwaka Mwangiri	24754219	0720547656	Female	No	Above 35
18/05/2023 - 19/05/2023	MSUFINI CHURCH HARVEST	MWAWESA WARD	Nicholas Dzuya Masha	10092483	0727240316	Male	No	Above 35

18/05/2023 - 19/05/2023	MSUFINI CHURCH HARVEST	MWAWESA WARD	Josephine A. Ouko	37162376	0794315748	Female	No	Below 35
18/05/2023 - 19/05/2023	MSUFINI CHURCH HARVEST	MWAWESA WARD	Renson Mbaji	14499318	0729279232	Male	No	Above 35
18/05/2023 - 19/05/2023	MSUFINI CHURCH HARVEST	MWAWESA WARD	Stanley P. Mwambamba	25807714	0727384176	Male	No	Above 35
18/05/2023 - 19/05/2023	MSUFINI CHURCH HARVEST	MWAWESA WARD	Vincent Mumbo	22666220	0722346336	Male	Yes	Above 35
18/05/2023 - 19/05/2023	MSUFINI CHURCH HARVEST	MWAWESA WARD	Konde Tsui Konde	16082227	0701926475	Male	No	Above 35
18/05/2023 - 19/05/2023	MSUFINI CHURCH HARVEST	MWAWESA WARD	Bernard Mbaji	6703770	0724486062	Male	No	Above 35
18/05/2023 - 19/05/2023	MSUFINI CHURCH HARVEST	MWAWESA WARD	Saumu Mgaza Mta	9476974	0790607905	Female	No	Above 35
18/05/2023 - 19/05/2023	MSUFINI CHURCH HARVEST	MWAWESA WARD	Zulphar Umazi Tsuma	31959348	0729888183	Female	Yes	Below 35
18/05/2023 - 19/05/2023	MSUFINI CHURCH HARVEST	MWAWESA WARD	Johnson Baraka Ngoji	2162451	0741403542	Male	No	Above 35
18/05/2023 - 19/05/2023	MSUFINI CHURCH HARVEST	MWAWESA WARD	Zainabu M. Munga	11494971	0704011719	Female	No	Above 35
18/05/2023 - 19/05/2023	MSUFINI CHURCH HARVEST	MWAWESA WARD	Martha W. Mwaibora	11654789	0113840272	Female	No	Above 35

18/05/2023 - 19/05/2023	MSUFINI CHURCH HARVEST	MWAWESA WARD	Elvina Kadzo Ngumbao	3889178	0721224217	Female	No	Above 35
18/05/2023 - 19/05/2023	MSUFINI CHURCH HARVEST	MWAWESA WARD	Wilfred N. Zoka	133584130	0728488761	Male	No	Above 35
18/05/2023 - 19/05/2023	MSUFINI CHURCH HARVEST	MWAWESA WARD	Charles Janji Mzungu	9476625	701751712	Male	No	Above 35
18/05/2023 - 19/05/2023	MSUFINI CHURCH HARVEST	MWAWESA WARD	Joyce Nyamvula	31219213	717736360	Female	Yes	Below 35
20/05/2023 & 22/05/2023	KISIMA CHA NEEMA CHURCH	RURUMA WARD	Said Mwangiri Miriro	24661851	0716026332	Male	No	Above 35
20/05/2023 & 22/05/2023	KISIMA CHA NEEMA CHURCH	RURUMA WARD	Caroline Mbeyu Banzi	24959510	0726980102	Female	No	Above 35
20/05/2023 & 22/05/2023	KISIMA CHA NEEMA CHURCH	RURUMA WARD	Jacob Kondo Dule	13484033	0724477262	Male	No	Above 35
20/05/2023 & 22/05/2023	KISIMA CHA NEEMA CHURCH	RURUMA WARD	Margret Mwaka Mwangiri	24754219	0720547656	Female	No	Above 35
20/05/2023 & 22/05/2023	KISIMA CHA NEEMA CHURCH	RURUMA WARD	Joseph Mbigo Boza	26595025	0718655486	Male	No	Below 35
20/05/2023 & 22/05/2023	KISIMA CHA NEEMA CHURCH	RURUMA WARD	Mwinyi Matano	13629736	0712662910	Male	No	Above 35
20/05/2023 & 22/05/2023	KISIMA CHA NEEMA CHURCH	RURUMA WARD	Johnny Tsammah Pangah	33059940	0759286133	Male	No	Above 35

20/05/2023 & 22/05/2023	KISIMA CHA NEEMA CHURCH	RURUMA WARD	Grace Pendo Kazungu	2.016E+10	0715490376	Female	No	Below 35
20/05/2023 & 22/05/2023	KISIMA CHA NEEMA CHURCH	RURUMA WARD	May Nyadzua Saha	22188733	0757332794	Female	No	Above 35
20/05/2023 & 22/05/2023	KISIMA CHA NEEMA CHURCH	RURUMA WARD	Eric Mtwana Zoila	3481758	0718163500	Male	No	Above 35
20/05/2023 & 22/05/2023	KISIMA CHA NEEMA CHURCH	RURUMA WARD	Rashid Karisa Khamtsoma	16132624	0727820747	Male	No	Above 35
20/05/2023 & 22/05/2023	KISIMA CHA NEEMA CHURCH	RURUMA WARD	Salome Chengo Barisa	23248054	0726028614	Female	Yes	Above 35
20/05/2023 & 22/05/2023	KISIMA CHA NEEMA CHURCH	RURUMA WARD	Abdulrahman M. Kandoro	3226831	0796061551	Male	No	Below 35
20/05/2023 & 22/05/2023	KISIMA CHA NEEMA CHURCH	RURUMA WARD	Thomas Chokwe Chipipi	1376636	0115157775	Male	No	Above 35
20/05/2023 & 22/05/2023	KISIMA CHA NEEMA CHURCH	RURUMA WARD	Shallet Juma Katimbo	20287258	0794242810	Female	Yes	Above 35
20/05/2023 & 22/05/2023	KISIMA CHA NEEMA CHURCH	RURUMA WARD	Patience Mghoi Ndeleko	23895339	0711859250	Female	No	Above 35
20/05/2023 & 22/05/2023	KISIMA CHA NEEMA CHURCH	RURUMA WARD	Mwanaidi K. Bakari	28875141	0725865442	Female	No	Below 35
20/05/2023 & 22/05/2023	KISIMA CHA NEEMA CHURCH	RURUMA WARD	Jane Dzame Saha	9962589	0727930616	Female	No	Above 35

20/05/2023 & 22/05/2023	KISIMA CHA NEEMA CHURCH	RURUMA WARD	Felix N. Piko	691137	0722484800	Male	No	Above 35
20/05/2023 & 22/05/2023	KISIMA CHA NEEMA CHURCH	RURUMA WARD	Allan A. Malingi	28049394	0746818967	Male	No	Below 35
23/05/2023- 24/05/2023	SHIKA DABU HALL	RABAI KISURUTINI WARD	Said Mwangiri Miriro	24661851	0716026332	Male	No	Above 35
23/05/2023- 24/05/2023	SHIKA DABU HALL	RABAI KISURUTINI WARD	Coroline Mbeyu Banzi	24959510	0726980102	Female	No	Above 35
23/05/2023 - 24/05/2023	SHIKA DABU HALL	RABAI KISURUTINI WARD	Jacob Konde Dule	13484033	0724477262	Male	No	Above 35
23/05/2023 - 24/05/2023	SHIKA DABU HALL	RABAI KISURUTINI WARD	Fathiya Hemed	13446888	0728463455	Female	No	Above 35
23/05/2023 - 24/05/2023	SHIKA DABU HALL	RABAI KISURUTINI WARD	Samuel C. Fanjo	26870173	0714350119	Male	No	Below 35
23/05/2023 - 24/05/2023	SHIKA DABU HALL	RABAI KISURUTINI WARD	Constance Luvuno Mkare	22865338	0727540651	Female	No	Above 35
23/05/2023 - 24/05/2023	SHIKA DABU HALL	RABAI KISURUTINI WARD	Lennox Ringa Mwabaya	28186907	0718056796	Male	No	Below 35
23/05/2023 - 24/05/2023	SHIKA DABU HALL	RABAI KISURUTINI WARD	Rose Jefwa	10831301	0726618217	Female	No	Above 35

23/05/2023 - 24/05/2023	SHIKA DABU HALL	RABAI KISURUTINI WARD	Ibrahim magongo	28873329	0703865287	Male	Yes	Below 35
23/05/2023- 24/05/2023	SHIKA DABU HALL	RABAI KISURUTINI WARD	Asha chizi	22164073	0711267427	Female	No	Above 35
23/05/2023 - 24/05/2023	SHIKA DABU HALL	RABAI KISURUTINI WARD	Esther Mbeyu Omara	39181876	0759527785	Female	No	Below 35
23/05/2023 - 24/05/2023	SHIKA DABU HALL	RABAI KISURUTINI WARD	Charles Chitsa	2142760	0721998905	Male	No	Above 35
23/05/2023- 24/05/2023	SHIKA DABU HALL	RABAI KISURUTINI WARD	Edward Malanga	28064375	0793773012	Male	No	Below 35
23/05/2023 - 24/05/2023	SHIKA DABU HALL	RABAI KISURUTINI WARD	Washe K. Ndaro	2143547	0721171160	Male	Yes	Above 35
23/05/2023- 24/05/2023	SHIKA DABU HALL	RABAI KISURUTINI WARD	Ramadhani Rashid	11457488	0723340220	Male	No	Above 35
23/05/2023 - 24/05/2023	SHIKA DABU HALL	RABAI KISURUTINI WARD	Mwanaidi Chiringa	8458751	0790543095	Female	No	Above 35
23/05/2023 - 24/05/2023	SHIKA DABU HALL	RABAI KISURUTINI WARD	Linda Chirunje	22879996	0743557123	Female	No	Above 35
23/05/2023- 24/05/2023	SHIKA DABU HALL	RABAI KISURUTINI WARD	Ramadhani Mwikandi	11641448	0726392889	Male	No	Above 35
23/05/2023- 24/05/2023	SHIKA DABU HALL	RABAI KISURUTINI WARD	Salama Mwilo	22210969	0723985534	Female	No	Above 35

23/05/2023 - 24/05/2023	SHIKA DABU HALL	RABAI KISURUTINI WARD	Omar Munga Chembe	13731127	0729096428		No	Above 35
-------------------------	--------------------	-----------------------------	-------------------	----------	------------	--	----	----------

KALOLENI								
Date	Venue	Ward	Name	ID Number	Mobile Number	Gender	Disability	Age
17-05-2023	KINGS PUB	KALOLENI WARD	FELIX BARAKA	28903596	717590648	Male	No	Below 35
		KALOLENI WARD	AHMAD ABDALLA	35965673	792540081	Male	No	Below 35
		KALOLENI WARD	JOHN CHARO KALUME	1015640	795658976	Male	Yes	Above 35
		KALOLENI WARD	MOSES.K.CHANGO	11086314	72616318	Male	No	Above 35
		KALOLENI WARD	GLADYS WAKESHO CHARO	36032971	743557445	Female	No	Below 35
		KALOLENI WARD	JAPHET MUKOWA	8521702	725814676	Male	No	Above 35
		KALOLENI WARD	OSCAR CHARO KAMBI	438694	712266411	Male	No	Above 35
		KALOLENI WARD	KUCHANJA KAINGU	10690403	723131140	Male	No	Above 35
		KALOLENI WARD	HAMSON ZIRO KATANA	32741238	792079690	Male	No	Below 35
		KALOLENI WARD	LAURYN KABIBI JONATHAN	36767539	741260027	Female	No	Below 35
		KALOLENI WARD	PETER VUKO BENNET	26496312	713727238	Male	No	Above 35
		KALOLENI WARD	IRENE.H.KUBAMBANYA	20394568	703625076	Female	No	Above 35
		KALOLENI WARD	MERCY CHIZI SARO	28154610	713246293	Female	No	Below 35
		KALOLENI WARD	KASENA CHANGAWA	5336519	729839295	Male	Yes	Above 35
		KALOLENI WARD	HUSSEIN KAINGU NYUNDO	5527940	723110183	Male	No	Above 35
		KALOLENI WARD	JONATHAN CHARO KENGA	4985434	721616365	Male	No	Above 35
		KALOLENI WARD	LEONARD KADENGE MASHA	8467433	746692405	Male	No	Above 35

		KALOLENI WARD	JOHN KITSAO NGUMBAO	16099597	790173945	Male	No	Above 35
		KALOLENI WARD	MARTIN.E.K.TSUMI	3906912	700532427	Male	No	Above 35
		KALOLENI WARD	JEGO.L.ZIAH	23591019	726551388	Male	No	Above 35
		KALOLENI WARD	JUMA MWAMUNGA	26863517	705884704	Male	No	Below 35
18/05/2023	MARIAKANI SOCIAL HALL	MARIAKANI WARD	SAMUEL IHA KANZAO	3893722	721145409	Male	No	Above 35
19/05/2023	MARIAKANI SOCIAL HALL	MARIAKANI WARD	ESTHER.K.KADENGE	23797725	712287187	Female	No	Above 35
		MARIAKANI WARD	FATUMA DZAME JUMA	14493594	720255487	Female	No	Above 35
		MARIAKANI WARD	JUMA SABURI HARE	23302631	725872228	Male	No	Above 35
		MARIAKANI WARD	MWALIMU MARTIN	26124220	728386084	Male	No	Above 35
		MARIAKANI WARD	ALI.M.MGANDI	27334549	728881281	Male	No	Below 35
		MARIAKANI WARD	PASCAL FIKIRI	38393385	707265266	Male	No	Below 35
		MARIAKANI WARD	SIFA SAMUEL MULWA	23438103	725873112	Male	No	Above 35
		MARIAKANI WARD	MATANO RONALD	20498337	719027157	Male	No	Above 35
		MARIAKANI WARD	TERESIA S.KAHINDI	10832550	721731117	Female	No	Above 35
		MARIAKANI WARD	JAMES M.CHARO	8437004	721531744	Male	No	Above 35
		MARIAKANI WARD	SUSAN KIOKO	9875250	720833879	Female	No	Above 35
		MARIAKANI WARD	HARRISON KATANA KONDE	9113726	704888183	Male	No	Above 35
		MARIAKANI WARD	JOYCE WAKITHI KOMBE	916429	742802444	Female	No	Above 35
		MARIAKANI WARD	TABU C.MWAMUNGA	27663218	745335041	Female	No	Above 35
		MARIAKANI WARD	RAJAB LUGOGO	8289207	722895597	Male	No	Above 35
		MARIAKANI WARD	JUMAA KATANA KONDE	27549306	718466049	Male	No	Below 35

		MARIAKANI WARD	FELIX BARAKA	28903596	717590648	Male	No	Below 35
		MARIAKANI WARD	AHMAD ABDALLA	35965673	792540081	Male	No	Below 35
		MARIAKANI WARD	JUMA MWAMUNGA	26863517	705884704	Male	No	Below 35
		MARIAKANI WARD	LINET ZABIBU	33018993	791705665	Female	No	Below 35
20-05-2023	GOTANI CHURCH	KAYAFUNGO WARD	SCHOLASTICA Z.KAZUNGU	22791003	705490799	Female	No	Above 35
22/05/2023	GOTANI CHURCH	KAYAFUNGO WARD	BENJAMIN OKIYA AMBOKO	41325388	742191385	Male	No	Below 35
		KAYAFUNGO WARD	ESTHER REHEMA SHIDA	29530543	716761877	Female	No	Below 35
		KAYAFUNGO WARD	MARTHA WALEGHWA	27128502	711468135	Female	No	Below 35
		KAYAFUNGO WARD	JOSPHINE MWANATE DZOMO	33401952	705230651	Female	No	Below 35
		KAYAFUNGO WARD	UMAZI CHINDORO CHOGA	20366725	717638077	Female	No	Below 35
		KAYAFUNGO WARD	DAMARU DAMA KATANA	26759038	727839638	Female	No	Below 35
		KAYAFUNGO WARD	BAHATI RAMA NDURYA	31547274	715928789	Female	No	Above 35
		KAYAFUNGO WARD	HAMISI THUVA SALIM	28235541	703477566	Male	No	Above 35
		KAYAFUNGO WARD	VENCESLUS GABRIEL MKUTANO	11262586	711981586	Male	No	Above 35
		KAYAFUNGO WARD	NGONYO MNADZARI	22521504	715425415	Male	No	Above 35
		KAYAFUNGO WARD	BENSON SIFA CHANGAWA	29929029	726006221	Male	No	Below 35
		KAYAFUNGO WARD	DANIEL MITSANJE	26343144	713081742	Male	No	Above 35
		KAYAFUNGO WARD	KENGA MLEWA MKARE	546795	723237666	Male	No	Above 35
		KAYAFUNGO WARD	CLESENSIA MCHANJI	26488119	707179384	Female	No	Below 35
		KAYAFUNGO WARD	FELIX BARAKA	28903596	717590648	Male	No	Below 35
		KAYAFUNGO WARD	LINET ZABIBU	33018993	791705665	Female	No	Below 35

		KAYAFUNGO WARD	JUMA MWAMUNGA	26863517	705884704	Male	No	Below 35
		KAYAFUNGO WARD	AHMAD ABDALLA	35965673	792540081	Male	No	Below 35
23/05/2023	PENTECOSTAL CHURCH	MWANAMWINGA	KAHINDI KATANA MWEHU	668605	726276742	Male	No	Above 35
24/05/2023	CHIEFS OFFICE KWA MAP	MWANAMWINGA	RAPHAEL GABBS MWENI	16108701	726676570	Male	Yes	Above 35
		MWANAMWINGA	REV.EDWARD KALUME	5337770	711735805	Male	No	Above 35
		MWANAMWINGA	IBRAHIM C .GUNGA	40828536	719583	Male	No	Below 35
		MWANAMWINGA	GARAMA MGALA	11494031	714286458	Male	No	Above 35
		MWANAMWINGA	CONSTANCE JONATHAN	14499702	710629449	Female	No	Above 35
		MWANAMWINGA	SCHOLAR MURABU	11762051	791562965	Female	No	Above 35
		MWANAMWINGA	MWANASHA MARIDHA OMAR	29031318	769333752	Female	No	Below 35
		MWANAMWINGA	MILLCENT KAREMBO KITSAO	26897336	718637158	Female	No	Above 35
		MWANAMWINGA	KAZUNGU CHARO	33377479	799054086	Male	No	Below 35
		MWANAMWINGA	DORCAS SALAMA TEMBE	10423548	705237094	Female	Yes	Above 35
		MWANAMWINGA	FELIX BARAKA	28903596	717590648	Male	No	Below 35
		MWANAMWINGA	JUMA MWAMUNGA	26863517	705884704	Male	No	Below 35
		MWANAMWINGA	LINET ZABIBU	33018993	791705665	Female	No	Below 35
		MWANAMWINGA	AHMAD ABDALLA	35965673	792540081	Male	No	Below 35
		MWANAMWINGA	NAOMIE S.KITHI	11875546	710118353	Female	No	Above 35
		MWANAMWINGA	RINA NYADZUA	24443634	724672156	Female	No	Above 35
		MWANAMWINGA	JOSEPH K.KITSAO	9113338	718888454	Male	No	Above 35
		MWANAMWINGA	STEPHEN S.BAYA	11760769	728706025	Male	No	Above 35

		MWANAMWINGA	DANIEL G.YAA	22704602	737567333	Male	No	Above 35
--	--	-------------	--------------	----------	-----------	------	----	----------

GANZE SUB-COUNTY								
Date	Venue	Ward	Name	ID Number	Mobile Number	Gender	Disability	Age
16/05/202-17/5/2023	bamba pefa church	BAMBA	Samuel konde	2164975	722856402	Male	No	Above 35
		BAMBA	Daniel m. Ngonyo	23412594	727339280	Male	Yes	Above 35
		BAMBA	George .g. Kadzaa	9472770	722649735	Male	Yes	Above 35
		BAMBA	John kahindi karisa	26334959	729266768	Male	No	Below 35
		BAMBA	Rukia ali jefwa	11495850	713501480	Female	No	Above 35
		BAMBA	Jackson jumaa karisa	25876865	793980441	Male	No	Below 35
		BAMBA	Kazungu birya sembi	456940	799448186	Male	No	Above 35
		BAMBA	Elizabeth halima kombe	30049563	70888604	Female	No	Below 35
		BAMBA	Dorothy mbeyu mwangolo	221404451	713850876	Female	No	Above 35
		BAMBA	Samuel kitsao charo	13144878	729249909	Male	No	Above 36
		BAMBA	David karisa kiraga	11497599	714906928	Male	No	Above 37
		BAMBA	David k. Kitsao	2217583	722464712	Male	No	Above 38
		BAMBA	Gideon charo katana	22274442	700075618	Male	No	Above 39
		BAMBA	Rashid ali jefwa	2552287	700811000	Female	No	Above 40
		BAMBA	Clariss kalama	22664507	717040350	Female	No	Above 41
		BAMBA	Kadhengi koi kithome	4982105	740693621	Male	No	Above 42
		BAMBA	Samuel hamisi karisa	26906204	793941600	Male	No	Above 43
		BAMBA	Sulleiman jefwa	23840094	727873615	Male	No	Above 44
		BAMBA	Macdonald mulewa mkare	8657233	720274341	Male	No	Above 45
		BAMBA	Joel deche	21979419	720907369	Male	No	Above 35
		BAMBA	Zeinab musa hassan	31889342	717462392	Female	No	Below 35
						Male		
18/05/2023	Ganze pefa church	GANZE	Kenneth konde kazungu	37156672	759994087	Male	No	Below 35

		GANZE	Francis baya ali	26995290	113686655	Male	No	Below 35
		GANZE	Frida f. Kazungu	21406760	791632040	Female	No	Above 35
		GANZE	Linah m. Nzai	24199323	740672974	Female	No	Above 36
		GANZE	Philister k. Menza	14500481	724303710	Female	No	Above 37
		GANZE	Kazungu benson simba	13626090	725383247	Male	Yes	Above 38
		GANZE	Rogers mark s. Thethe	527060	725383247	Male	No	Above 39
		GANZE	Rodgers safari ponda	2167875	727560060	Male	No	Above 40
		GANZE	Amos mwaringa	28632151	745724022	Male	Yes	Below 35
		GANZE	Mercy k. Iha	14500929	723385542	Female	No	Above 35
		GANZE	Sabina karemba reuben	30021552	724903761	Female	No	Below 35
		GANZE	Joseph amani kitsao	271079596	717446921	Male	No	Above 35
		GANZE	James thaura mweni	13448803	748237900	Male	No	Above 36
		GANZE	Boniface nganga	24982164	702282050	Male	No	Above 37
		GANZE	Macdonald mulewa mkare	8657233	720274341	Male	No	Above 38
		GANZE	Benjamin k. Mwaringa	25904620	718706657	Male	No	Above 39
		GANZE	Zeinab musa hassan	31889342	717462392	Female	No	Below 35
		GANZE	Wilson riziki karisa	28697114	712449188	Male	No	Below 35
		GANZE	Enock jefwa	28402390	729764561	Male	No	Below 35
		GANZE	Suleiman jefwa	23840094	727873615	Male	No	Above 35
		GANZE	Joel deche	2197941	720907569	Male	No	Above 35
						Male		
23/05/2023	ASC HALL	SOKOKE	Fred khonde	23667907	726345048	Male	No	Above 35
		SOKOKE	Mercy mungule	23440331	707545650	Female	No	Above 35
		SOKOKE	Mercyline k. Charo	37421586	713851328	Female	No	Below 35
		SOKOKE	Dorrice f kenga	27933969	714776839	Female	No	Below 35
		SOKOKE	Jane mwaebe	5635655	722293283	Female	No	Above 35
		SOKOKE	Japhet tsanje kombo	4975841	748757211	Male	Yes	Above 36
		SOKOKE	Caroline pendo shida	28540483	718636368	Female	No	Below 35

		SOKOKE	Changawa kadhenge	9773712	703635266	Male	No	Above 35
		SOKOKE	Protus john lumala	686169	728151884	Male	No	Above 36
		SOKOKE	Suleiman jefwa	23840094	727873615	Male	No	Above 37
		SOKOKE	Benson k mwanguo	33368494	795888896	Male	No	Below 35
		SOKOKE	James muye korona	25057808	728336526	Male	Yes	Above 35
		SOKOKE	Eluid munga kaginya	2145477	729916388	Male	No	Above 36
		SOKOKE	Lawrence vuko	13853540	703865217	Male	No	Above 37
		SOKOKE	Macdonald m mkare	8657233	720274341	Male	No	Above 38
		SOKOKE	Riziki chari	23836783	723854437	Female	No	Above 39
		SOKOKE	Zeinab musa	31889342	717462392	Female	No	Below 35
		SOKOKE	Rophus nyale	29176795	704207412	Male	No	Below 35
		SOKOKE	Joyce mwambegu	35934154	104249631	Female	No	Below 37
		SOKOKE	Lucy kashuru	30637703	700347348	Female	No	Below 38
		SOKOKE	Joel deche	2197941	720907569	Male	No	Above 35
20/5/2023	MARANATHA CHURCH	JARIBUN I	Macdonald m. Mkare	8651233	720274341	Male	No	Above 35
		JARIBUN I	Kelvin pande mwagona	33329954	711404901	Male	No	Below 35
		JARIBUN I	Kelvin chiriba charo	29640672	713437820	Male	Yes	Above 35
		JARIBUN I	Mohamed mwaduni	5421036	725804869	Male	No	Above 36
		JARIBUN I	Timothy mrabu	4597684	721310150	Male	No	Above 37
		JARIBUN I	Justus kadenge	13375643	720289158	Male	No	Above 38
		JARIBUN I	Mwanza mwangiri	10832535	720983182	Male	No	Above 39
		JARIBUN I	Hillary m. Kalama	2152671	726628166	Male	No	Above 40
		JARIBUN I	Selina k.iha	24895870	723753654	Female	No	Above 41
		JARIBUN I	Mwagandi chai	20454287	725258798	Male	No	Above 42

	JARIBUN 	Joyce pondera	2153031	716276464	Female	No	Above 43
	JARIBUN 	Velice mwacamdana	5620799	711229663	Female	No	Above 44
	JARIBUN 	Titus ali shindo	9476944	717621295	Male	No	Above 45
	JARIBUN 	Zeinab musa hassan	31889342	717462392	Female	No	Below 35
	JARIBUN 	Mary nyanzigu magio	23195653	701224955	Female	No	Above 35
	JARIBUN 	Francis kahindi charo	9964460	721601170	Male	No	Above 35
	JARIBUN 	Jimmy p. Mwavuo	34871052	746574697	Male	No	Below 35
	JARIBUN 	Nathaniel s. Chai	13730002	711332575	Male	No	Above 35
	JARIBUN 	Suleiman .a. Jefwa	23840094	727873615	Male	No	Above 35
	JARIBUN 	Joel deche	21979419	720907369	Male	No	Above 35
	JARIBUN 	Josephine neema kaindi	30054966	768408125	Female	No	Below 35

KILIFI SOUTH SUB-COUNTY								
Date	Venue	Ward	Name	ID Number	Mobilie Number	Gender	Disability	Age
20/05/2023 and 22/05/2023	Kilifi South Sub County Offices	JUNJU	James Omar Msanzu	37168489	705836050	Male	No	Above 35
20/05/2023 and 22/05/2023	Kilifi South Sub County Offices	JUNJU	Victor Mwamuye Mwahingo	26350831	726803878	Male	No	Below 35
20/05/2023 and 22/05/2023	Kilifi South Sub County Offices	JUNJU	Khalid Mohammed	28926996	707019115	Male	No	Below 35
20/05/2023 and 22/05/2023	Kilifi South Sub County Offices	JUNJU	Said Nyiro Chiwai	33296371	707256358	Male	No	Below 35
20/05/2023 and 22/05/2023	Kilifi South Sub County Offices	JUNJU	Eric Yeri	36978574	793272466	Male	No	Below 35
20/05/2023 and 22/05/2023	Kilifi South Sub County Offices	JUNJU	Nancy Mkala	9771353	725010614	Female	No	Below 35
20/05/2023 and 22/05/2023	Kilifi South Sub County Offices	JUNJU	Amina Ali	26166304	721414176	Female	No	Above 35
20/05/2023 and 22/05/2023	Kilifi South Sub County Offices	JUNJU	gilbert Nzai	25159969	110508894	Male	No	Above 35
20/05/2023 and 22/05/2023	Kilifi South Sub County Offices	JUNJU	Ali Karisa Kalama	32133963	719392259	Male	No	Below 35
20/05/2023 and 22/05/2023	Kilifi South Sub County Offices	JUNJU	Charles Nyale	13733973	729627820	Male	No	Above 35
20/05/2023 and 22/05/2023	Kilifi South Sub County Offices	JUNJU	Samuel Besharia	10957642	791530201	Male	No	Above 35
20/05/2023 and 22/05/2023	Kilifi South Sub County Offices	JUNJU	Phillip Toni	13270152	717832227	Male	No	Above 35
20/05/2023 and 22/05/2023	Kilifi South Sub County Offices	JUNJU	Patterson Baya	34085977	790513431	Male	No	Below 35
20/05/2023 and 22/05/2023	Kilifi South Sub County Offices	JUNJU	Venert Moka	24665402	769882791	Male	No	Above 35
20/05/2023 and 22/05/2023	Kilifi South Sub County Offices	JUNJU	Douglas Runga	25737877	715621587	Male	No	Above 35
20/05/2023 and 22/05/2023	Kilifi South Sub County Offices	JUNJU	Lekita Mwangome	26027457	0723847480	Male	No	Above 35
20/05/2023 and 22/05/2023	Kilifi South Sub County Offices	JUNJU	Patience Kahonzi	32729385	0711436178	Female	No	Above 35
25/05/2023 and 26/05/2023	Chasimba Light of God Pentecostal Church	CHASIMBA	Stephen Deche	22431380	728863503	Male	No	Above 35

25/05/2023 and 26/05/2023	Chasimba Light of God Pentecostal Church	CHASIMBA	Alex Njuga	1121099	0724361127	Male	No	Above 35
25/05/2023 and 26/05/2023	Chasimba Light of God Pentecostal Church	CHASIMBA	Charles S. Kasoso	22862318	0710294643	Male	No	Above 35
25/05/2023 and 26/05/2023	Chasimba Light of God Pentecostal Church	CHASIMBA	Rama Charles	25376594	0707533561	Male	No	Above 35
25/05/2023 and 26/05/2023	Chasimba Light of God Pentecostal Church	CHASIMBA	Sammy Ngema Choga	25296993	0726541988	Male	No	Above 35
25/05/2023 and 26/05/2023	Chasimba Light of God Pentecostal Church	CHASIMBA	Patterson F. Mwamu	3156705	0722585127	Male	No	Above 35
25/05/2023 and 26/05/2023	Chasimba Light of God Pentecostal Church	CHASIMBA	Annah N. Deche	29113618	0759800451	Female	Yes	Above 35
25/05/2023 and 26/05/2023	Chasimba Light of God Pentecostal Church	CHASIMBA	Mary Nguma Kuto	11265853	0741521236	Female	No	Above 35
25/05/2023 and 26/05/2023	Chasimba Light of God Pentecostal Church	CHASIMBA	Maureen Mnyazi	29549422	0706466595	Female	No	Below 35
25/05/2023 and 26/05/2023	Chasimba Light of God Pentecostal Church	CHASIMBA	Kalu Tsuma Kalu	16112327	0703172473	Male	No	Above 35
25/05/2023 and 26/05/2023	Chasimba Light of God Pentecostal Church	CHASIMBA	Victor Chiko	26350831	0734442504	Male	No	Below 35

25/05/2023 and 26/05/2023	Chasimba Light of God Pentecostal Church	CHASIMBA	Anwar Samson	23189651	0726896145	Male	No	Above 35
25/05/2023 and 26/05/2023	Chasimba Light of God Pentecostal Church	CHASIMBA	Beatrice Sada	41476045	0713178520	Female	No	Below 35
25/05/2023 and 26/05/2023	Chasimba Light of God Pentecostal Church	CHASIMBA	Maureen Jefwa	33232631	0768826917	Female	No	Above 35
25/05/2023 and 26/05/2023	Chasimba Light of God Pentecostal Church	CHASIMBA	Moses Mwadzoya	22969155	0795576545	Male	No	Above 35
25/05/2023 and 26/05/2023	Chasimba Light of God Pentecostal Church	CHASIMBA	Lekita Mwangemi	26027457	0723347480	Female	No	Above 35
25/05/2023 and 26/05/2023	Chasimba Light of God Pentecostal Church	CHASIMBA	Larry Mwabonje	25614582	0721201340	Male	No	Above 35
25/05/2023 and 26/05/2023	Chasimba Light of God Pentecostal Church	CHASIMBA	Jonathan Mwangata	22604336	0732319426	Male	No	Above 35
25/05/2023 and 26/05/2023	Chasimba Light of God Pentecostal Church	CHASIMBA	Amon Mwalungo	22404320	0722151041	Male	No	Above 35
25/05/2023 and 26/05/2023	Chasimba Light of God Pentecostal Church	CHASIMBA	Caroline Dume	22111325	011201426	Female	No	Above 35

23/05/2023 and 24/05/2023	Bandarasalama hall	MWARAKAYA	Daniel Mwayaya	3909464	0722597568	Male	No	Above 35
23/05/2023 and 24/05/2023	Bandarasalama hall	MWARAKAYA	Benedict J. Mwamuye	13140907	0726072198	Male	No	Above 35
23/05/2023 and 24/05/2023	Bandarasalama hall	MWARAKAYA	Scholar S. Ngamba	13730920	0799583357	Female	No	Above 35
23/05/2023 and 24/05/2023	Bandarasalama hall	MWARAKAYA	Raymond K. Nyale	9207441	0724039483	Male	No	Above 35
23/05/2023 and 24/05/2023	Bandarasalama hall	MWARAKAYA	Agnes M. Mwasambu	29113597	0111620885	Female	No	Below 35
23/05/2023 and 24/05/2023	Bandarasalama hall	MWARAKAYA	Lucy C. Ndewa	33990036	0796751245	Female	No	Below 35
23/05/2023 and 24/05/2023	Bandarasalama hall	MWARAKAYA	Selina Mwasambu	28518141	0748207044	Female	No	Below 35
23/05/2023 and 24/05/2023	Bandarasalama hall	MWARAKAYA	Justus M. John	31892846	0701618355	Male	No	Below 35
23/05/2023 and 24/05/2023	Bandarasalama hall	MWARAKAYA	Mwamuye Mwalungo	2635083	0726803878	Male	No	Below 35
23/05/2023 and 24/05/2023	Bandarasalama hall	MWARAKAYA	Frankline Zossy	2134061	0729173283	Male	Yes	Above 35
23/05/2023 and 24/05/2023	Bandarasalama hall	MWARAKAYA	Rachael Dzombo	28036698	0795077343	Female	No	Below 35
23/05/2023 and 24/05/2023	Bandarasalama hall	MWARAKAYA	Raymond Mbura	5011923	0722883570	Male	No	Above 35
23/05/2023 and 24/05/2023	Bandarasalama hall	MWARAKAYA	Joseph T. Karima	506241	0729774614	Male	No	Above 35
23/05/2023 and 24/05/2023	Bandarasalama hall	MWARAKAYA	Abdalla Said Noor	10093107	0705449508	Male	No	Above 35
23/05/2023 and 24/05/2023	Bandarasalama hall	MWARAKAYA	Moses Mwadzoya	22909155	0795570545	Male	No	Below 35
23/05/2023 and 24/05/2023	Bandarasalama hall	MWARAKAYA	Lekita Mwangome	26027457	723347480	Male	No	Below 35
23/05/2023 and 24/05/2023	Bandarasalama hall	MWARAKAYA	Victor Chiko	21929780	0726803878	Male	No	Above 35
23/05/2023 and 24/05/2023	Bandarasalama hall	MWARAKAYA	Kahonzi Patience	32729385	0711436178	Female	Yes	Below 35
23/05/2023 and 24/05/2023	Bandarasalama hall	MWARAKAYA	Mourine Kasichana	3171528	0786536773	Female	No	Above 35

18/05/2023 and 19/05/2023	Makio hall	MTEPENI WARD	Patrick .M. Rasi	2138280	0729304945	Male	No	Below 35
18/05/2023 and 19/05/2023	Makio hall	MTEPENI WARD	Mathias J. IEWA	5022988	0725287536	Male	No	Above 35
18/05/2023 and 19/05/2023	Makio hall	MTEPENI WARD	Fardinand K. binimbita	2179574	0721410349	Male	No	Above 35
18/05/2023 and 19/05/2023	Makio hall	MTEPENI WARD	Fatuma K. Ali	11874186	0768861893	Female	No	Above 35
18/05/2023 and 19/05/2023	Makio hall	MTEPENI WARD	Wanje Kalenga	2270438	0726421513	Male	No	Above 35
18/05/2023 and 19/05/2023	Makio hall	MTEPENI WARD	Moses Munga	30920538	0740627778	Male	No	Below 35
18/05/2023 and 19/05/2023	Makio hall	MTEPENI WARD	Patricia M. Mungoma	26266629	0711794173	Female	No	Below 35
18/05/2023 and 19/05/2023	Makio hall	MTEPENI WARD	Abdalla C. kahindi	27213485	0721152254	Male	No	Below 35
18/05/2023 and 19/05/2023	Makio hall	MTEPENI WARD	Maureen Tefula	332232631	0768826917	Female	No	Above 35
18/05/2023 and 19/05/2023	Makio hall	MTEPENI WARD	Asha Said	25078641	0725112674	Female	No	Above 35
18/05/2023 and 19/05/2023	Makio hall	MTEPENI WARD	Hosseah Chome	93910807	07248745224	Male	No	Above 35
18/05/2023 and 19/05/2023	Makio hall	MTEPENI WARD	Tabitha Mugo	23101511	0706767079	Female	No	Above 35
18/05/2023 and 19/05/2023	Makio hall	MTEPENI WARD	Joab Chai	27418980	0712576349	Male	No	Above 35
18/05/2023 and 19/05/2023	Makio hall	MTEPENI WARD	Nguma Jacob	13594471	0722254513	Male	No	Above 35
18/05/2023 and 19/05/2023	Makio hall	MTEPENI WARD	Henry T. Shida	24770340	0713815793	Male	No	Below 35
18/05/2023 and 19/05/2023	Makio hall	MTEPENI WARD	Caroline Tsuma	29246078	0717206107	Female	No	Below 35
18/05/2023 and 19/05/2023	Makio hall	MTEPENI WARD	Justus Katana	11871578	0717735356	Male	No	Above 35
18/05/2023 and 19/05/2023	Makio hall	MTEPENI WARD	Moses Mwadzoya	22919155	0725219499	Male	No	Above 35
18/05/2023 and 19/05/2023	Makio hall	MTEPENI WARD	Kahonzi Patience	32729385	711436178	Female	No	Below 35
18/05/2023 and 19/05/2023	Makio hall	MTEPENI WARD	Lekita Mwangome	26027457	723347480	Male	No	Above 35
16/05/2023 and 17/05/2023	Club garden	SHIMO LA TEWA	Larry Katite	22304790	0721847511	Male	No	Above 35

16/05/2023 and 17/05/2023	Club garden	SHIMO LA TEWA	Joseph Tembo	21403017	0756876396	Male	No	Above 35
16/05/2023 and 17/05/2023	Club garden	SHIMO LA TEWA	Moureen Chengo	21151631	0722304012	Male	No	Above 35
16/05/2023 and 17/05/2023	Club garden	SHIMO LA TEWA	Timothy Kimenyi	23887890	0723359717	Male	No	Above 35
16/05/2023 and 17/05/2023	Club garden	SHIMO LA TEWA	Thomas Mwasambu	10691479	011264915	Male	Yes	Above 35
16/05/2023 and 17/05/2023	Club garden	SHIMO LA TEWA	Moses Mwadzoya	22919155	0725219499	Male	No	Above 35
16/05/2023 and 17/05/2023	Club garden	SHIMO LA TEWA	Hosea Chome	9391807	0728745224	Male	No	Above 35
16/05/2023 and 17/05/2023	Club garden	SHIMO LA TEWA	Charles Chai	31012725	0758824216	Male	No	Below 35
16/05/2023 and 17/05/2023	Club garden	SHIMO LA TEWA	Leah Michael	40344790	0791209335	Female	No	Above 35
16/05/2023 and 17/05/2023	Club garden	SHIMO LA TEWA	Ann Mbodze	40096092	0114240706	Female	No	Below 35
16/05/2023 and 17/05/2023	Club garden	SHIMO LA TEWA	Hatib Shariff	11763887	0720821989	Male	No	Above 35
16/05/2023 and 17/05/2023	Club garden	SHIMO LA TEWA	Ndago Munga	27925261	0780662780	Male	No	Below 35
16/05/2023 and 17/05/2023	Club garden	SHIMO LA TEWA	Salome Waithira	10228354	0724140966	Female	Yes	Above 35
16/05/2023 and 17/05/2023	Club garden	SHIMO LA TEWA	Nahashon K. Charo	13143509	0110288768	Male	Yes	Above 35
16/05/2023 and 17/05/2023	Club garden	SHIMO LA TEWA	Saumu Hindo	29474349	0707736539	Female	No	Above 35
16/05/2023 and 17/05/2023	Club garden	SHIMO LA TEWA	Jonathan Munga	5012201	0722228538	Male	No	Above 35
16/05/2023 and 17/05/2023	Club garden	SHIMO LA TEWA	Jane Wanjala	33796099	0743606703	Female	No	Below 35
16/05/2023 and 17/05/2023	Club garden	SHIMO LA TEWA	Lekita Mwangemi	26027457	0723347480	Male	No	Below 35
16/05/2023 and 17/05/2023	Club garden	SHIMO LA TEWA	Patience Kahonzi	32729385	0711436178	Female	No	Below 35
16/05/2023 and 17/05/2023	Club garden	SHIMO LA TEWA	Caroline M. Tsuma	29246078	0711206107	Female	No	Below 35

MALINDI SUB-COUNTY								
Date	Venue	Ward	Name	ID Number	Mobile Number	Gender	Disability	Age
20/05/2023- 22/05/2023	Takaye Social Hall	SHELLA	Maina Njuguna	21898618	722566883	Male	No	Above 35
		SHELLA	Okeyo Emanuel	38715427	7952175	Male	No	Below 35
		SHELLA	Abdalla Ali Mbwana	158900	722305378	Male	No	Above 35
		SHELLA	Margaret Safari Nzai	20112374	792809498	Female	No	Above 35
		SHELLA	Leila Tinga	9474762	726609000	Female	Yes	Above 35
		SHELLA	James K Menza	13142038	705154577	Male	No	Above 35
		SHELLA	Baraka Kashero	28019071	725541717	Male	No	Below 35
		SHELLA	Willy Mwangi	14081225	720254008	Male	No	Above 35
		SHELLA	Manuela Kahindi	36942631	798178810	Female	No	Below 35
		SHELLA	Mariam Kupi	39020340	716218352	Female	No	Below 35
		SHELLA	Mohamed Almas	31911988	700874709	Male	No	Below 35
		SHELLA	Harrison Chai	9475440	716095116	Male	No	Above 35
		SHELLA	Nicodemus Mwayele	9878709	723344469	Female	No	Above 35
		SHELLA	Brian Omondi	32455390	746000331	Male	No	Below 35
		SHELLA	Lennox Mwangolo Douglas	23988384	729711599	Male	No	Above 35
		SHELLA	Patrick Kabai Mungoma	30535496	717740198	Male	No	Below 35
		SHELLA	Furaha Dadu Chome	27600905	708909243	Male	No	Below 35
		SHELLA	Jael Colleen	36960446	723049611	Female	No	Below 35
		SHELLA	Roy Mwavita	33250000	794395145	Male	No	Below 35
18/05/2023- 19/05/2023	Mtangani Social Hall	MALINDI TOWN	Hafswa Riaz	34489331	728508990	Female	No	Below 35
		MALINDI TOWN	Roseline Ngala	27734900	717573333	Female	No	Below 35

		MALINDI TOWN	Emmanuel Kingi	34211590	705325868	Male	No	Below 35
		MALINDI TOWN	Enock Jefwa	28015217	715615187	Male	No	Below 35
		MALINDI TOWN	Benard Angore Charo	26370432	706046281	Male	No	Below 35
		MALINDI TOWN	Jumba K Alex	27728180	712604445	Male	No	Above 35
		MALINDI TOWN	Agnes Kalu Kiti	11085869	713904369	Female	No	Above 35
		MALINDI TOWN	Daniel Jefwa Karisa	9112629	723072200	Male	Yes	Above 35
		MALINDI TOWN	Grace D Ngamba	23898671	759674543	Female	Yes	Above 35
		MALINDI TOWN	Luwali Fondo Biryia	2130956	728731909	Male	No	Above 35
		MALINDI TOWN	Emmily Dama	36753776	792175198	Female	No	Below 35
		MALINDI TOWN	Elizabeth Lulu	37027883	726359499	Female	No	Below 35
		MALINDI TOWN	Rishnah Zulfikar	33484049	741223019	Female	No	Below 35
		MALINDI TOWN	Ibrahim Mwanjala	26295139	729376558	Male	No	Below 35
		MALINDI TOWN	Julliet E Wanje	23667673	729930562	Female	No	Above 35
		MALINDI TOWN	Armon H Kombe	20461822	723202709	Male	No	Above 35
		MALINDI TOWN	Simon D Mwalimu	31915588	713479180	Male	No	Below 35
		MALINDI TOWN	Patrick B Safari	27138174	795389300	Male	No	Above 35
		MALINDI TOWN	Amina Said	8527728	115076399	Female	No	Above 35
16/05/2023-17/05/2023	Langobaya Community Hall	JILORE	Sarah Dama Lugo	10830229	711844895	Female	No	Above 35
		JILORE	Clara Mukhambe Muganga	32743471	717406936	Female	No	Below 35
		JILORE	Tabitha Simeon	6720454	745042007	Female	Yes	Above 35
		JILORE	Esther Nzale Ngala	24590236	726089674	Female	No	Above 35

		JILORE	Amos Kahindi Mukare	1167376	714663219	Male	No	Above 35
		JILORE	Rev Joshua Nzai	4583568	726336910	Male	No	Above 35
		JILORE	Jackson Ngari	34490195	702134979	Male	No	Below 35
		JILORE	Nelson Mandela Mangi	34158217	704933062	Male	No	Below 35
		JILORE	Nzaro H Kajimbi	13448110	728873028	Male	No	Above 35
		JILORE	Lilian Dyeka	32641939	768792841	Female	No	Below 35
		JILORE	Charo Kenga	27152676	701169400	Male	No	Above 35
		JILORE	Jael Colleen	36960446	723049611	Female	No	Below 35
		JILORE	Benard Ngowa	22807927	727218415	Male	No	Above 35
		JILORE	Prudence Neema George	34306589	715251877	Female	No	Below 35
		JILORE	Patrick Kabai Mungoma	30535496	717740198	Male	No	Below 35
		JILORE	Lennox Mwangolo Douglas	23988384	729711599	Male	No	Above 35
		JILORE	Mercyline Charo	23341220	706491070	Female	No	Above 35
16/05/2023-17/05/2023	Kakuyuni social hall	KAKUYUNI	Joseph Ruwa Unda	5029315	723227755	Male	No	Above 35
		KAKUYUNI	Thomas Tabu Mwakombe	38071761	729893461	Male	Yes	Above 35
		KAKUYUNI	Paul Mtawali Hare	25980405	728116416	Male	No	Above 35
		KAKUYUNI	Ronvictor Mbongilo	23419892	768843508	Male	No	Above 35
		KAKUYUNI	Stephen Wambua Musyimi	21805544	718195549	Male	No	Above 35
		KAKUYUNI	Masha Cornelius Kalume	20461716	726311511	Male	No	Above 35
		KAKUYUNI	Philister Karisa Charo	21926111	797934984	Female	No	Above 35
		KAKUYUNI	Stephen Kazungu Jefwa	11765412	728797796	Male	No	Above 35
		KAKUYUNI	Benard Nzaro Kavelei	28161479	717895973	Male	No	Above 35

		KAKUYUNI	Cosmas Masha Mramba	23695921	716192715	Male	No	Above 35
		KAKUYUNI	Julet Kaneno Yeri	25261623	740513118	Female	No	Above 35
		KAKUYUNI	Rachael Karemba Nzai	26361278	797404953	Female	No	Above 35
		KAKUYUNI	Susan Sanita Thomas	21386188	743898682	Female	No	Above 35
		KAKUYUNI	Athman Sulubu Mangi	24441300	726364673	Male	No	Above 35
		KAKUYUNI	Gabriel Jumaa Dzuya	34498052	743485077	Male	No	Below 35
		KAKUYUNI	Safari Kirao	5470589	713847389	Male	No	Above 35
		KAKUYUNI	Mwanaharusi Kanga	22622301	752046143	Female	No	Above 35
		KAKUYUNI	Neema Mwango	20170995	721226255	Female	No	Above 35
		KAKUYUNI	Joel Kingi Dzanga	26351021	111207863	Male	No	Below 35
		KAKUYUNI	Amina Said	8527728	115076399	Female	No	Above 35
18/05/2023-19/05/2023	IFC Church	GANDA	Benard Ngowa	22802927	727218415	Male	No	Above 35
		GANDA	Karisa B.Maitha	11263143	700536041	Female	No	Above 35
		GANDA	Anna Nema Ziro	1348402	721420055	Male	No	Above 35
		GANDA	Albert Mugala Murira	2245453	712414969	Male	No	Below 35
		GANDA	Margaret Tabu Mwamure	4988238	720916614	Male	No	Above 35
		GANDA	Lucky Tune Faide	318683894	70861880	Male	No	Below 35
		GANDA	James Kai Mazrui	27429342	11540183	Male	No	Below 35
		GANDA	James Thoya	22903268	795219682	Male	No	Above 35
		GANDA	Partrick Wanje	8369218	724816921	Male	No	Above 35
		GANDA	Geoffrey Wanje	29260907	702292231	Male	No	Above 35
		GANDA	Dianna Kalume	35232668	111975985	Female	No	Below 35

		GANDA	Emmanuel M.Mangi	29683116	720493604	Male	No	Below 35
		GANDA	David Gari	29945677	708569989	Male	No	Below 35
		GANDA	Susan Thoya Sirya	26841456	719896818	Female	Yes	Below 35
		GANDA	Ramadhan Yusuf	13196768	707549814	Male	No	Above 35
		GANDA	Stanley Ali Mwambire	20544181	722444975	Male	No	Above 35
		GANDA	Neema Mwango	20170995	721226255	Male	No	Above 35
		GANDA	Jael Colleen	36960446	723049611	Female	No	Above 35
		GANDA	Partrick Kabai Mungoma	30535496	717740198	Male	No	Below 35
		GANDA	Lennox Mwangolo Douglas	23988384	729711599	Male	No	Below 35
		GANDA	Phyllis Kadzo	31864330	746616764	Female	No	Above 35

MAGARINI SUB-COUNTY

Date	Venue	Ward	Name	ID Number	Mobile Number	Gender	Disability	Age
21/5/2023-22/5/2023	Marafa social hall	MARAFa	Albest yongo shungu	12845914	723275156	Male	No	Above 35
	Marafa social hall	MARAFa	Elvina tabu mupe	20245830	727130964	Female	No	Above 35
	Marafa social hall	MARAFa	Roseline yongo mungule	13853558	711257385	Female	No	Above 35
	Marafa social hall	MARAFa	Shandrack kambi chengo	8459050	710641473	Male	No	Above 35
	Marafa social hall	MARAFa	Paul mbitha mwambire	5039270	724109248	Male	No	Above 35
	Marafa social hall	MARAFa	Mathias kadudu nyawa	22509437	724444551	Male	No	Above 35
	Marafa social hall	MARAFa	Emmanuel kahindi john	2184459	768119265	Male	Yes	Above 35
	Marafa social hall	MARAFa	Prudence kwekwe	24487206	725364977	Female	No	Above 35
	Marafa social hall	MARAFa	Morris masha luganje	28686852	715603488	Male	No	Below 35
	Marafa social hall	MARAFa	Mary nguwa jefwa	27135631	705812150	Female	No	Below 35
	Marafa social hall	MARAFa	Pendo hajila abajila	39774631	792609989	Female	No	Below 35
	Marafa social hall	MARAFa	Laurent mutuku kavoo	30291530	715590875	Male	No	Below 35
	Marafa social hall	MARAFa	Fednand minaiivu thoya	25562325	707510356	Male	No	Below 35
	Marafa social hall	MARAFa	Kwicha david baya	32322474	797913783	Male	No	Below 35
	Marafa social hall	MARAFa	Jacob themo kwicha	27075804	115617570	Male	No	Below 35
	Marafa social hall	MARAFa	James fondo dena	28922572	707670477	Male	No	Below 35
	Marafa social hall	MARAFa	Joy rehema david	29472035	703158470	Female	No	Below 35
	Marafa social hall	MARAFa	Neema mwango	20170995	721226255	Female	No	Above 35
	Marafa social hall	MARAFa	Francis g kalu	8527558	725525114	Male	No	Above 35
	Marafa social hall	MARAFa	Kanundu ngumbao	22532772	720418194	Male	No	Above 35

18/5/2023-19/5/2023	Kaembeni social hall	MAGARINI	Yaa baya	28815357	796448823	Male	No	Below 35
	Kaembeni social hall	MAGARINI	Elizabeth kenga	3898796	720822502	Female	No	Below 35
	Kaembeni social hall	MAGARINI	Gladys pendo	24655789	724599885	Female	No	Below 35
	Kaembeni social hall	MAGARINI	Nelson voti	27833114	728903104	Male	No	Below 35
	Kaembeni social hall	MAGARINI	Alex mwangemi	500829	724706579	Male	No	Above 35
	Kaembeni social hall	MAGARINI	Julius msaji	4965772	725820521	Male	No	Above 35
	Kaembeni social hall	MAGARINI	Joseph kangi	23380365	728572700	Male	No	Above 35
	Kaembeni social hall	MAGARINI	Nelson b kahindi	2155668	721969518	Male	No	Above 35
	Kaembeni social hall	MAGARINI	Daniel mboro gona	20183329	722581501	Male	No	Above 35
	Kaembeni social hall	MAGARINI	Baraka kingi mangi	31240429	758336629	Male	No	Below 35
	Kaembeni social hall	MAGARINI	Phenina masika lubando	13376131	710444255	Female	No	Above 35
	Kaembeni social hall	MAGARINI	Mary kadzo angore	24291771	716637691	Female	No	Above 35
	Kaembeni social hall	MAGARINI	James mumba kahindi	28253798	702744462	Male	Yes	Above 35
	Kaembeni social hall	MAGARINI	John yerih kombek	22507320	724831225	Male	No	Above 35
	Kaembeni social hall	MAGARINI	Hassan salim	35899134	740548830	Male	No	Below 35
	Kaembeni social hall	MAGARINI	Deblina mtana	28013029	715623925	Female	No	Below 35
	Kaembeni social hall	MAGARINI	Matilda baya	26842567	701140227	Female	No	Above 35
	Kaembeni social hall	MAGARINI	Vincent yeri chengo	22184491	729289508	Male	No	Above 35
	Kaembeni social hall	MAGARINI	Florence w santa	27601817	726865016	Female	No	Below 35
17/5/2023-18/5/2023	Mapimo youth polytechnic	GONGONI	Janet birya	27066995	728991515	Female	No	Above 35
	Mapimo youth polytechnic	GONGONI	Berita tatu	39051704	113311327	Female	Yes	Below 35

	Mapimo youth polytechnic	GONGONI	Neema guyo	39263697	758628656	Female	Yes	Below 35
	Mapimo youth polytechnic	GONGONI	Charo kazungu kingura	5028045	723435924	Male	No	Above 35
	Mapimo youth polytechnic	GONGONI	Kassim b. Abdalla	10669784	713580226	Male	No	Above 35
	Mapimo youth polytechnic	GONGONI	Mure jafari yaa	26699339	700830866	Male	No	Below 35
	Mapimo youth polytechnic	GONGONI	Riziki furaha katana	41593550	795578371	Female	No	Below 35
	Mapimo youth polytechnic	GONGONI	Pamela pendo	27866941	716380731	Female	No	Above 35
	Mapimo youth polytechnic	GONGONI	Rodgers k. Mbitha	27360341	700073979	Male	No	Below 35
	Mapimo youth polytechnic	GONGONI	Christine jumwa changawa	20011465	711338470	Female	No	Above 35
	Mapimo youth polytechnic	GONGONI	Shadrack magambo toya	2129137	723359889	Male	No	Above 35
	Mapimo youth polytechnic	GONGONI	James charo mramba	20413251	715173903	Male	Yes	Above 35
	Mapimo youth polytechnic	GONGONI	Esther kadzo thoya	10831809	713078545	Female	No	Above 35
	Mapimo youth polytechnic	GONGONI	Leah joseph birya	20159483	713101711	Female	No	Above 35
	Mapimo youth polytechnic	GONGONI	Kafadu kenga	13849327	727749664	Male	No	Below 35
	Mapimo youth polytechnic	GONGONI	Kitsao faini baracha	26519493	718017533	Male	No	Above 35
	Mapimo youth polytechnic	GONGONI	Jackline f. Kazungu	23887872	712902285	Female	No	Above 35
	Mapimo youth polytechnic	GONGONI	Florence w. Santah	27601817	726865961	Female	No	Below 35
	Mapimo youth polytechnic	GONGONI	Vincent yeri	22184491	729289508	Male	No	Above 35
	Mapimo youth polytechnic	GONGONI	Deblina mtana	28013029	715623925	Female	No	Below 35
22/05/2023-23/5/2023	Kwa ndomo center	SABAKI	Joel dzanga	26351021	788334820	Male	No	Below 35
	Kwa ndomo center	SABAKI	Samsom kitsao	33862058	708376869	Male	No	Below 35
	Kwa ndomo center	SABAKI	Jemima mndete mgao	36881900	759061732	Female	No	Below 35

	Kwa ndomo center	SABAKI	Antonela mbeyu taura	31723625	727165368	Female	No	Below 35
	Kwa ndomo center	SABAKI	Jonathan ngalla	22393737	711344050	Male	No	Below 35
	Kwa ndomo center	SABAKI	Agnes dama kalume	26394440	714877423	Female	No	Below 35
	Kwa ndomo center	SABAKI	Beatrice kenga	34492366	741215003	Female	No	Below 35
	Kwa ndomo center	SABAKI	Samuel saro steven	22956898	728840172	Male	No	Above 35
	Kwa ndomo center	SABAKI	Mary kaingu tume	27153492	708507224	Female	No	Below 35
	Kwa ndomo center	SABAKI	Patrick safari	27138174	728566323	Male	No	Above 35
	Kwa ndomo center	SABAKI	Musa abdalla	13486388	733192752	Male	No	Above 35
	Kwa ndomo center	SABAKI	Emmanuel mzungu ndaa	34226970	796163029	Male	No	Below 35
	Kwa ndomo center	SABAKI	Gladies riziki kahindi	34525582	723218083	Female	No	Below 35
	Kwa ndomo center	SABAKI	Swabrina mohammed kailo	35962505	759390713	Female	No	Below 35
	Kwa ndomo center	SABAKI	Neema ismael thuva	30244240	715105135	Female	No	Below 35
	Kwa ndomo center	SABAKI	Fredrick mtawali charo	29946673	797192107	Female	No	Below 35
	Kwa ndomo center	SABAKI	Hilda pendo baraka	28811955	768950209	Female	No	Above 35
	Kwa ndomo center	SABAKI	Samuel nguma	29942456	743306797	Male	No	Below 35
	Kwa ndomo center	SABAKI	Issac ngumbao kitsao	30659450	746839681	Male	No	Below 35
	Kwa ndomo center	SABAKI	Amina saidi	19980018077	115076399	Female	No	Below 35
22/5/2023-23/5/2023	Pj's hall	GARASHI	Vincent yeri chengo	22184491	729289508	Male	No	Above 35
	Pj's hall	GARASHI	Florence w. Santah	27601817	726865061	Female	No	Below 35
	Pj's hall	GARASHI	Samuel mukare jefa	36351011	795864777	Male	No	Below 35
	Pj's hall	GARASHI	Fatuma keah karisa	13837190	704531087	Female	No	Above 35

	Pj's hall	GARASHI	Pauline kasichana kalama	12841457	715951693	Female	No	Above 35
	Pj's hall	GARASHI	Pricillah sisi katana	23188673	715303224	Female	No	Above 35
	Pj's hall	GARASHI	Alice mapenzi baya	28693987	703767487	Female	No	Below 35
	Pj's hall	GARASHI	Patrick changawa kitsao	20241281	769301425	Male	No	Above 35
	Pj's hall	GARASHI	Lakheri kivure	29494796	715525785	Female	No	Below 35
	Pj's hall	GARASHI	Dunga simeon mole	25020577	725774189	Male	No	Below 35
	Pj's hall	GARASHI	Omar mwarua nguma	21414555	725889221	Male	Yes	Above 35
	Pj's hall	GARASHI	Mary tuzo kahindi	39053487	757300367	Female	No	Below 35
	Pj's hall	GARASHI	Lilian shukran kahindi	27251398	704739429	Female	No	Above 35
	Pj's hall	GARASHI	Moses kithi mrimi	32026806	792473226	Male	No	Below 35
	Pj's hall	GARASHI	Mdachi kaingu	23809907	726888712	Male	No	Above 35
	Pj's hall	GARASHI	Gilbert sulubu nyiro	10831945	720241790	Male	No	Above 35
	Pj's hall	GARASHI	James katana kithi	5536242	726280692	Male	No	Above 35
	Pj's hall	GARASHI	Deblina mtana	28013029	715623925	Female	No	Below 35
23//2023-24/5/2023	Marereni	ADU	Isaac katana mkare	23162661	757103099	Male	No	Above 35
	Marereni	ADU	Michael charo	8527469	712366274	Male	No	Above 35
	Marereni	ADU	Margret luganje	11762928	717143317	Female	No	Above 35
	Marereni	ADU	Patience chonga	26842541	799465372	Female	No	Above 35
	Marereni	ADU	Jeremia kahindi charo	4312511	720634407	Female	No	Below 35
	Marereni	ADU	Pambo kadzo kalume	37648259	742467058	Female	No	Below 35
	Marereni	ADU	Tom jefa mweri	20420062	715723005	Male	No	Above 35

	Marereni	ADU	Zena hamisi	23168011	703767333	Female	No	Above 35
	Marereni	ADU	Sylvester karima	29573678	711416912	Male	No	Below 35
	Marereni	ADU	Margreth kadzo	26053806	729149731	Female	No	Below 35
	Marereni	ADU	Patience kwekwe	2141795	727771694	Female	No	Above 35
	Marereni	ADU	Jacob karisa katana	23809346	729894791	Female	No	Above 35
	Marereni	ADU	Francis furaha fondo	13852023	706533443	Male	No	Above 35
	Marereni	ADU	Partrick mwashighadi	9773866	713209940	Male	No	Above 35
	Marereni	ADU	Vincent yeri chengo	22184497	729289518	Male	No	Above 35
	Marereni	ADU	Florence santa	27601817	726865061	Female	No	Below 35
	Marereni	ADU	Deblin mtana	28013029	715623925	Female	No	Below 35
	Marereni	ADU	Dominic atore	9877105	721633082	Male	Yes	Above 35
	Marereni	ADU	Ester karisa	14710246	728148383	Female	No	Above 35
	Marereni	ADU	Francis kalu	8527558	725525112	Male	No	Above 35

Annex 2: Ward Adaptation Priorities

Table 11: Ward Adaptation Priorities

WARD	HAZARD	PROPOSED ACTIONS	TARGET
Tezo	Drought	Planting of more trees	Farmers
		Construction of water storage facilities and drilling of boreholes and wells	Community
		Introduction of drought resistant crops	Farmers
		Smart Agriculture	Farmers
	Environmental degradation	Soil conservation methods	Community
		Empowerment on good farming methods	Farmers
		Organizing of beach clean ups and mangrove planting	Fisher folks
	Emerging climate related diseases	Vaccination	Community
		improved sanitation services	Community
		Improved health facilities	Community
		Practising healthy food intake	Community
Sokoni	Drought	Creation of awareness	Community
	Famine	Efficient climate information system	Community
	Environmental degradation	Use of sustainable farming methods	farmers
Kibarani	Drought	Adoption of drought resistant crops	Farmers
	Deforestation	Establishment of tree nurseries	Farmers
	Land pollution	Sensitization on proper land usage	Farmers
	Water pollution	Sensitization on proper sanitation	Community
	Human/wildlife conflicts	Development of an enforcement plan	Community, forest associations
Dabaso	Drought	Use of drought resistant crops	Farmers
		Use of high breed crops and animals	Farmers, livestock keepers
		Construction of a water storage facilities	community
		Drilling of boreholes and wells	Community
		Smart Agriculture	Farmers
		Planting of more trees	Community
		Construction of fish ponds	Fisher folks

		Construction of waste treatment facilities	Community
	Emerging diseases	Vaccination	Community
		Improved sanitation services	community
Matsangoni	Drought	Introduction of drought resistant crops	Farmers
	Environmental degradation	Planting of trees	Farmers
		Destocking of farms	Farmers
		Planting of mangroves	Fisherfolks
		Construction of waste treatment plants	Community
		Education on Soil conservation methods	Farmers
		Planting of trees	Community
		Creation of awareness	community
	Destruction of ocean ecosystem	Use of sustainable fishing methods	Fisherfolks
		Economic empowerment	Fisherfolks,
		Planting of mangroves	Community
		Mari culture and aquaculture	Community
		Equipping community with business skills.	Fisherfolks
Watamu	Disturbance of ocean ecosystem	Planting of corals	Fisherfolks
		Equipping community with business skills	Community
		Community sensitization	Fisherfolks
		Planting of mangroves trees	Community
	Drought		
		Introduction of drought resistant crops	Community, farmers
		Sustainable Agricultural Practices	farmers
		Economic empowerment	Agribusiness community
		Community sensitization	Agribusiness community
	Emerging diseases	Vaccination	Disease victims and community
		Improved sanitation services	Community
		Guidance and counselling	Community
		Improved healthcare services	Community
		Awareness on proper and healthy feeding	Community and victims

	Land degradation	Education on soil conservation measures	Community
		Planting more trees	Farmers
		Construction of waste treatment plants	Community
Mnarani	Drought	Community sensitization	Community
		Planting of more trees	Livestock keepers
		Destocking of farms	Farmers
		Adoption of mixed cropping	Farmers
		Use of drought resistant crops	Community
		Construction of water reservoir	Community
		Sensitization on water harvesting	Community, farmers
	Environmental degradation	Adoption of the 3R's strategy	Community
		Introduction of fish farming	Fisher folks
		Capacity building	Youth, women
		Establishment of tree nurseries	Farmers, community
		Water catchment protection	Community
	Crop pests and diseases	Timely planting	Farmers
		Planting of early maturing crops	Farmers
		Use of improved breeds of crops	Farmers
		Use of pest resistant crops	Farmers
Junju	Drought	Capacity building on drought resistant crops	Farmers
		Provision of proper food storage facilities	Farmers
		Awareness campaigns on drought resilience	Community
		Drilling of boreholes	Fisherfolk
		Environmental Protection and Awareness Campaigns	Women, Children, Youth
		Capacity building on agricultural resilience	
		Construction of dams	
		Mangrove reforestation	
		Rearing of livestock	Women, Youth
		Coral restoration programs	
		Regulation of pastoral headers into the Ward	Farmers
	Floods	Afforestation programs	Community

		Improvement of road networks	Farmers
		Mapping out swampy areas.	
		Awareness creation on flood zones	
		Provision of relief food	Community
	Pollution	Installation of scrubbers	
Mwarakaya	Drought	Supply of drought resistant seeds	Farmers
		Recruitment of community agricultural officers	Farmers
		Capacity building on agroforestry	Farmers
		Establishment of food storage facilities	Farmers
		Establishment of community agricultural cooperatives	
	Deforestation	Reforestation of Kayas	Kaya Chonyi
		Law enforcement against cutting down of trees	Forests
		Environmental awareness campaigns	Youth
Shimo La Tewa	Drought	Installation of gatters for water harvesting	Households
		Drilling of community boreholes	
		Providing drought resistant seeds	Farmers
		Provision of food aid	Community
	Local Floods	Improvement of drainage systems	
		Building gabions	
		Digging Soak pits	
	Poor Solid Waste Management	Increase of waste collection centres	
		Establishment of waste recovery centres	
		Capacity building on waste re-use and recycling	
	Deforestation	Mangrove reforestation	community
		Tree growing programs	
Chasimba	Drought	Construction of dam for irrigation	Farmers
		Establishment of household water harvesting systems	Households
		supply of fast maturing seeds	Farmers
		Diversification of crop varieties	
		Construction of water pans	Farmers
		Education and awareness on tree growing	Farmers

		Provision of tree seedlings	Farmers
	Deforestation	Reforestation	Community
		Agroforestry	community
		Mapping and fencing of forest lands	community
Mtepeni	Floods	Tree planting	Farmers
		Migration from swampy areas	Community
		Mangrove reforestation	Fisherfolk
		Provision of relief food	Community
	Drought	Planting of drought resistant crops	Community
		Monetary assistance for the elderly and People living with Disability	community
		Regulation on pastoral headers into the ward	farmers
	Poor Solid Waste Management	Setting up of waste recovery centers	Youth, Women
		Increasing waste collection bins	
		Increasing waste collection bins	Youth, Women
		Trainings on waste re-use and recycling	Outh , women, community
Mariakani	Drought	Planting of trees	Farmers
		Trainings and advocacy	community
		construction of dams	Community
		sensitization to the community	community
		Planting of trees	Community
		Building gabions	Community
		Provision of sufficient seedlings	Farmers
	Pollution	Distribution of collection bins,	Farmers
		Improved solid waste management	community
kayafungo		Planting of trees	Community
	Deforestation	Enforcing laws on tree cutting	Community
		Sensitization to the community	community
		Sufficient supply of seedlings	Farmers
	Drought	Relief food	Farmers
	Pest and Diseases	Practice goat farming since they are more resistant drought events	

Kaloleni	Drought	Drilling of boreholes	Community
		Expansion of water pipelines	community
		Smart actions on water harvesting	community
		Smart and modern farming practices	Community
		Planting of Drought resilient crops	farmers
		Planting of trees	community
Mwana Mwinga	Drought	Sensitization programmes	Community
		Modern methods of farming practices	farmers
		Improve water harvesting systems	farmers
		Growing of trees	community
		Mechanization of Agriculture	Community
		Enforcement of acts and policies to protect the environment	community
		Provision of seeds and fertilizers	Farmers
		Food Aid programmes	
Mwawesa	Drought	drilling boreholes and rain water harvesting .	Community farmers
		construction of water pipeline,dams and water pans	Community farmers
		adopting of new and smart farming technologies	Farmers
		afforestation	Community
		Soil conservation measures e g contour farming	Farmers
RURUMA	drought	afforestation	community
		soil conservation measures	Farmers
		Adopting new and smart farming technologies	Farmers
		Destocking and animal offtake program	Farmers
		construction of water harvesting structures	
Kambe-Ribe	Drought	planting early maturing and drought resistant crops	farmers
		planting trees crops	Farmers
		Animal offtake	community farmers
		conservation and supplement feeds e.g hay	Farmers
		construction of gabions and terraces	

	floods	agroforestry	community farmers
		planting water tolerant trees	community
		construction of gabions and terraces	community farmers
		construction of homesteads on raised areas	community
		water treatment	community
		MDA to outbreak areas as a prophylactic	community
		Disaster management plans	
Rabai/Kisurut uni	Drought	Digging water pans and boreholes	Community
		Construction of waterpipe lines	Community
		Installation of gutters and storage tanks	Farmers
		Construction of water reservoir along rivers	Farmers
		Water treatment technologies	Community
		Establishment of indegenious and exotic tree nurseries	community
		Erection of fence around water bodies	community
		Planting of trees and monitoring them	community
		Diversification of crops	Farmers
		Adoption of Zypits	farmers
	Environmental Pollution	Refilling and planting trees	Community
		Construction of gabions and terraces	Business Community
		Practise conservation agriculture	Community and business community
		Construction of a sewerage system	Community
		Purchase of a waste collection vehicle	community
		Purchase of waste collection bins	community
Ganze	drought	planting of drought tolerant crops	farmers
		practicing crop rotation	farmers,pwd,livestock farmers,women ,youth

		use of satisfied seeds	farmers
		use of local fertilizer	farmers
		practicing irrigation	livestock farmers
		practicing mulching	farmers and livestock
		protection of water catchment areas through registering of WRUAS	all community members
		water harvesting through on farm water ponds	community bordering the park
		incentive for veterinary medication	farmers
		introduction of climate smart agriculture	Farmers
Bamba	drought	Community awareness	farmers
		Good agricultural practices	farmers
		Agroforestry	community
		water conservation structures and treatment	community
		Conservation agriculture	livestock farmers
		Regenerative agriculture	Farmers
		controlled/planned grazing and destocking	farmers
	Land degradation	Training on better farming methods.	farmers
		Good agricultural practices	Farmers
		Agroforestry	community
		Planting of drought tolerant trees	Community
Jaribuni	drought	drilling of boreholes and rain water harvesting	community
		tree planting	Community
		irrigation farming	Farmers
		used of certified seeds	Farmers
		rearing drought resistance livestock and planting drought resistance crops	Livestock Farmers
		fodder production	Livestock Farmers
	Land Degradation caused by Quarries and deforestation	tree planting for rehabilitation of old quarries and abandon quarries	community

		promoting agroforestry	Community
		Introduction of laws and policies for mining (quarry act)	Quarry investor, Community
		tree planting	Farmers
		gabions construction	farmers
		climate smart agriculture	farmers
		agroforestry	farmers
		soil and water conservation techniques	farmers
Sokoke	drought	Agroforestry	COMMUNITY
		promotion of green energy	farmers
		good govanance	livestock famers
		political good will	community
		Good agricultural practices	famers
		fodder production and conservation	famers and livestok farmersc
		use of climate smart agricultural prractices	livestocl famers
		provision of certified seeds for pasture and food crops	community
		construction of pasture storage facilities	all community members
		water harvesting	famers
		construction of electric fence	farmers
		to expediate on compensation process	farmers and livestock keepres
		tree planting	reserve community
		use of green energy	
		destocking and heard improvement	
		controlled grazing	
		agroforestry	
		mixed farming	
Jilore	Prolonged drought	Adoption of early maturing crop farming-training and provision of seeds inputs	Farmers
		Adaption of drought resistant breeds of livestock	Farmers

		Establish irrigations system from galana river	Farmers
		Distribution of relief food	Farmers
		Adoption of drought resistant crop farming -training and provision of seeds and inputs	Farmers
		construction of rain water harvesting	community
		Construction boreholes	community
		Tree planting along river Galana	community
	Floods	Establishing floods early warning systems.	community
		Building of gabions and terraces along the flood prone areas	community along river galana
	Land Degradation as a result of deforestation	Rehabilitation of degraded forest ecosystems.	community
		Establishing tree nursery	Degraded forest-jilore
		Establishment of tree woodlots	community
		Community training and capacity building on forest conservation	community
		Community sensitization on forest conservation	community
	Human-Wildlife conflict	Sensitization on dynamics of human and wildlife conflicts	Community
		Securing of wildlife habitats.	Community
		Establish of water points within the animals habitats	Community
		Adoption of alternative non wood construction materials	Community
		Adoption of alternative cooking fuels. Like improves jikos and briquettes	Community
Kakuyuni	Prolonged drought	Adoption of drought resitant crop farming -training and provision of seeds and inputs	Farmers
		Adoption of early maturing crop farming-training and provision of seeds inputs	Farmers
		Adaption of drought resistant breeds of livestock	Farmers
		Establish iirigation system from galana river	Farmers
		Distribution of relief food	Farmers
		Construction boreholes	community
		construction of rain water harvesting	community
		Tree planting along river galana	Farmers

	Floods	Establishing floods early warning systems.	Farmers
		Building of gabions and terraces	Community
Ganda Ward	Deforestation	Rehabilitation of degraded forest ecosystems.	
		Establishing tree nursery	Community
		Establishment of tree woodlots	Community
		Community training and capacity building on forest conservation	Community
		Community sensitization on forest conservation	Community
	Human-Wildlife conflict	Sensitization on dynamics of human and wildlife conflicts	Farmers
		Securing of wildlife habitats.	Farmers
		Establish of water points within the animals habitants	Kenya Forest
		Adoption of alternative construction materials	Kenya Forest
		Adoption of alternative non wood cooking fuels.	Community
Shella Ward	Enviromental pollution	Establishment of waste segregation yards.	Community
		Purchase of garbage collection trucks, skip loaders and compactor	Community
		Establish a sanitary landfill.	Community
		Purchase of garbage collection trucks	Community
		Provision of standard coded waste bins	Community
		Strengthening of waste management policies	Community
		Research and development of climate smart and bio gradable materials	Community
	Storm Waters	Construction of drainage facilities	
		Construction of storm water harvesting and storage	community
		Community sensitization on public health	community
	Human and Animal diseases	Construction of public toilets	Community
		Treatment of boreholes	Community
	Drought	Training on crops and animal pests & diseases	Farmers

		Distribution of pesticides	Farmers
		Planting of disease & pest resistant crop varieties	Farmers
		Adoption of disease-resistant livestock	Farmers
		Distribution of relief food .	Community
Malindi Town	Poor Waste management	Establishment of waste segregation yards.	Community
		Purchase of garbage collection trucks, skip loaders and compactor	Community
		Establish a sanitary landfill.	Community
		Purchase of garbage collection trucks	Community
		provision of standard coded waste bins	Community
		Strengthening of waste management policies	
		Research and development of climate smart and bio gradable materials	
	Human and Animal diseases	Construction of public toilets	Community
		Construction & equipping of health centres	Community
		Treatment of boreholes	Community
		Training on crops and animal pests & diseases	Community
		Distribution of pesticides	Community
		Planting of disease & pest resistant crop varieties	Farmers
		Adoption of disease-resistant livestock	Farmers
		Empowering fishermen with modern fishing technology to increase food production	
	Drought	Adoption of urban farming technics	Fisherfolk community
		Research and development of innovative food production technologies	Farmers
		Distribution of relief food .	Community
marafa	Drought	Kitchen gardening zypits	crop farmers
		Fast maturing crops	livestock and crop farmers
		Food distribution	community
		Destocking	
		Vaccination of animal	
		livestock offtake	

		construction of dams and fencing	
		tree planting	
Gongoni	Drought	Alternative livelihood (Agricultural activities)	fishermen
		sensitization on importance of breeding grounds	community
		Training of modern fishing technology	farmers
		Planting of mangroves	community
		Construction of fish depot	community
Magarini	Drought	Livestock offtake	Livestock farmers
		Stocking improved breed	farmers
		Early warning(weather focust)	community and animals
		Irrigation methods for crops	Livestock farmers
		water harvesting ponds	farmers
		water pipping	famers
		Food supplements for children	community
		Animal vaccination	farmers
		Alternative livelihood like bee keeping	farmers
		storage tanks	farmers
		Construction of grannaries	Community
		planting drought resistance crops	farmers, community
		Practicing climate smart agriculture	farmers
ADU	Drought	Distribution of relief food	
		planting drought resistance crops and early maturing crops	farmers, livestock keepers, community
		Installation of electric fence in parks	farmers, livestock keepers, community
		planting of nappier grass	communtiy
		Keeping of drought resistance crops	community
		Establishment of rescue centres	community
		Drilling of boreholes	farmers.
		Desalination of water sources	community
		Afforestation	farmers

		Construction of health facilities	Farmers
		Establishment of rescue centres	fishers
		Practising climate smart agriculture	farmers
		Early weather warning	community
Garashi	droughts	relief food	community
		food supplements	Livestock, fish farmers
		solar electric powered boreholes	community
		certified seeds	livestock farmers
		crops drug supplements	community, farmers
		Sensitization of agribusiness	community
		plant drought resistance crop	livestock farmers
		Alternative livelihood(Aqua, poultry farming)	community
		Revival of agriculture scheme	livestock officers
		Revival of cattle dips	farmers
		destocking	farmers
		Establishment of fodder and hay	farmers
		Animal offtake	farmers
		Keeping of drought Animals a d off take programs	livestock farmers
		Animal/ drugs supplements	farmers
		Sensitization on symptoms and diseases for poultry keeping	community
		Establishment of location livestock	community
		Establishment of milk production units for value addition at ward level	farmers
		supporting groups for Aqua- culture/bee keeping and poultry	community
		bulky construction of storage and reservoir tanks	community
		Establishment of water kiosk	farmers
		Sensitization on water-borne diseases	community
		Sensitization on GBV	community
		Treating of water sources	community
		Storage facilities (granaries	farmers-livestock,fisheries
		Practising climate smart agriculture	farmers
		planting of disease resistance crops	farmers

		planting of short maturity crops	farmers
		Plant rotation	farmers
Sabaki	Drought	Growing of drought resistance crops	Farmers
		Drilling of borehole	farmers, community
		Practising of smart agriculture	Farmers
		construction of water pans	community