

COUNTY STATISTICAL ABSTRACT

2015

MACHAKOS COUNTY



MACHAKOS COUNTY STATISTICAL ABSTRACT

2015

KENYA NATIONAL BUREAU OF STATISTICS

MACHAKOS COUNTY STATISTICAL ABSTRACT

2015

The County Statistical Abstract is a publication that highlights key statistical indicators at the County level. Any enquiries relating to this publication should be addressed to:

The Director General,
Herufi House,
Lt. Tumbo Street,
P. O. Box 30266 - 00100,
Nairobi.
Tel: 020 3317583/86/88/612/622/623/651
Email: directorgeneral@knbs.or.ke

Machakos County Statistical Office,
Kenya National Bureau of Statistics
County Commissioner's Compound,
Email: machakos@knbs.or.ke

Copyright © Kenya National Bureau of Statistics (KNBS)

All rights reserved

Extracts may be used or published if the source is duly acknowledged

Kenya National Bureau of Statistics

Vision Statement

To be a centre of excellence in production and management of quality statistics

Mission Statement

To develop, provide and promote quality statistical information for evidence-based decision making.

Core Values

- **Professionalism:** Strictly abides by professional considerations on the methods, standards and procedures for statistical production.
- **Confidentiality:** Guarantee confidentiality of data providers as provided in the Statistics Act 2006
- **Collaboration:** Collaborate with stakeholders so as to enhance the quality of statistical information
- **Teamwork:** To embrace teamwork as the hallmark of our success
- **Customer focus:** Commitment to meet the needs of our customers and always focus on customer satisfaction.
- **Accountability and Transparency:** Conduct business and lend services to stakeholders in a transparent and accountable manner.
- **Efficiency and effectiveness:** Promote high productivity, competence and usefulness of resources at the national and county level.
- **Innovation and Creativity:** Committed to innovation, invention, creativity and resourcefulness in service delivery.

Foreword

The implementation of the constitution has created increased demand for comprehensive and disaggregated statistical information to inform evidence based policy formulation, budget process, monitoring and evaluation of various programmes both at the county and national levels has increased over time.

It is on this basis that Kenya National Bureau of Statistics, being the principal agency of the Government for coordinating and supervising all official statistical programs undertaken within the National Statistical System embarked on various statistical activities. One of such key activities is the compilation of county statistical abstract.

The 2015 County Statistical Abstract Report is the first of its kind to be developed in Machakos County and will be produced annually. This will be a single source of indicators covering various sectors of the economy at the county level. The report has mainly benefited from the administrative data generated in the county. In addition, some indicators were compiled from various survey reports and population and housing censuses.

The report is expected to provide a reliable platform for planning, policy formulation monitoring and evaluation process. The data contained in this abstract will enable data users to gauge the performance of the county.

In conclusion, there is need for collaborative efforts between the County and National Governments in order to improve on the quality of statistical information, enhance dissemination, and accessibility of statistics at the county level.

Saitoti Torome
Principal Secretary
State Department of Planning and Statistics
Ministry of Devolution and Planning

Acknowledgement

The successful production of Machakos County Statistical Abstract has been made possible through joint and collaborative efforts of producers and users of statistics. The realization of this report was motivated by the increased demand for statistics at both devolved and national levels. To improve on the quality of the future statistical abstracts, the Bureau expects to have timely and reliable data from the data producers within the county that will meet the expectations of the users and suppliers.

First and foremost, I would like to acknowledge the great contribution of Kenya National Bureau of Statistics Board of Directors for conceiving and providing policy direction in development of annual county statistical abstract.

My sincere gratitude goes to H. E. Dr. Alfred Mutua, the Governor of Machakos County for providing an enabling and conducive environment for compilation of statistics for the county. I also want to thank the County Chief Officers, Directors and their staff who participated in the provision of data.

Special thanks goes to the County Commissioner for coordinating departments representing the National Government. I appreciate the roles played by county departmental heads who provided timely data and also participated in the validation of information contained in this publication.

I acknowledge the great contribution of the Machakos County Statistical Officer and the County Working Committee for their tireless efforts made to ensure successful compilation of data for the production of this Statistical Abstract.

Finally, I thank the KNBS fraternity, particularly KNBS County Statistical Abstract Secretariat at the headquarters for successfully coordinating various departments, planning, compiling and producing this 2015 County Statistical Abstract.

Zachary Mwangi
Director General
Kenya National Bureau of Statistics

Table of Contents

<i>Vision Statement</i>	iii
<i>Mission Statement</i>	iii
<i>Core Values</i>	iii
Foreword	iv
Acknowledgement	v
List of Abbreviations, Acronyms, Symbols	xi
Introduction	xiii
Machakos County Government	xv
<i>Mission Statement</i>	xv
<i>County Vision</i>	xv
Overview of the County	xv
Administrative and Political Units	1
Table 1.1: Administrative Units by Sub-County, 2014	2
Table 1.2: Political Units, 2014	2
Land and Climate	3
Table 2.1: Surface area by Category, 2014	3
Table 2.2: Topography	4
Table 2.3: Climate, 2013 – 2014	4
Table 2.4: Rainfall Statistics, 2013-2014	4
Table 2.5: Temperature Statistics, 2013-2014.....	5
Population and Vital Statistics	6
<i>Population Size and Distribution</i>	7
Table 3.1: Population Trend by Sex, Households and Density, Years 1969 – 2009.....	7
Table 3.3: Population by Age and Sex, 2010 – 2014	8
Table 3.2: Population Projections of selected ages, 2013 – 2014	9
<i>Vital Statistics</i>	9
Table 3.4: Births and Deaths Coverage, 2013 –2014	9
Table 3.5: Registered Births and Deaths by Sex, 2013 –2014	9
Table 3.6: Registered Births by Sub-County and Place of Occurrence, 2013-2014	10
Table 3.7: Registered Deaths by Sub-County and Place of Occurrence, 2011-2014.....	10
Table 3.8: Registered Births and Deaths by Sub-County, 2013-2014.....	11
Table 3.9: Registered Deaths by Major Cause, 2013-2014.....	11
Agriculture	12

Table 4.1: Agro-Ecological Zones for the Sub-County	13
Fig.1: Agro-Ecological Map of Machakos County	13
Table 4.2: Land Potential by Sub-County and area, 2014.....	14
Table 4.3: Area Cropped, Production and Value of Various Crops, 2013 – 2014	14
Table 4.4: Average Retail Prices for Fertilizer, 2013-2014	14
Livestock	15
Table 5.1: Livestock Population.....	15
Table 5.2: Number and Value of Animals Slaughtered by Type, 2013-2014*	16
Table 5.3: Quantity and Value of Milk production by Type of Animal, 2013-2014	16
Table 5.4: Quantity and Value of Animal products, 2013-2014	16
Table 5.5: Bee hives, Quantity and Value of Honey Produced, 2013–2014	17
Retail Price and Consumer Expenditure	18
Table 6.1: Wholesale Price of Some Selected Food Commodities, January - December, 2014*	19
Table 6.2: Retail Market Prices for Selected Commodities, January - December, 2014*	20
Fisheries	21
Table 7.1: Small dams stocked, fish ponds and Quantity of fish by Sub-County, 2013-2014	21
Table 7.2: Quantity and value of Fish harvested, 2013-2014.....	21
Cooperatives	22
Table 8.1: SACCOs by Type, Status, Membership and Turnover	22
Forestry	23
Table 9.1: Forest Cover by Size, 2013 – 2014	23
Table 9.2: Quantity and Value of Forest Products, 2013–2014	23
Table 9.3: Forest cover by type, 2013 – 2014	24
Table 9.4: Forests by Name, Type, Size and Sub-County, 2014*	24
Energy	25
Table 10.1: Average Monthly Pump Prices for Fuel by Category, 2013 – 2014	25
Transport and Communication	26
Table 11.1: Roads Coverage by Type & Distance, 2013 – 2014	26
Table 11.2 Telephone Services, 2014.....	26
Table 11.3 Postal Services	26
Education	27
<i>Early Childhood Education</i>	<i>27</i>
Table 12.1 ECDE centers by category and Sub-County	27

Table 12.2: Pupil Enrollment in ECD centers by sex	28
Table 12.3: ECDE Schools and Enrolment by Sex, 2014*	28
Table 12.4: ECDE Enrolments and Access Indicators, 2014*	28
Primary Education	29
Table 12.5 Primary Schools by Category and Sub-County, 2013–2014	29
Table 12.6: Primary Schools and Enrolment by Sex, 2014*	29
Table 12.7: Primary Enrolment and Access Indicators, 2014*	29
Table 12.8: Primary School Enrolment by Class, Sex & Sub-County, 2014*	30
Table 12.9: Teachers in Public Primary Schools by Sub-County, 2014–2015	31
Secondary Education	31
Table 12.10: Secondary Schools by category and Sub-County, 2013-2014	31
Table 12.11: Secondary School Enrolment by Class, Sex & Sub-County, 2014*	32
Table 12.12: Secondary Schools and Enrolment by Sex, 2014*	32
Table 12.13: Secondary School Enrolments and Access Indicators, 2014*	32
Table 12.14: Teachers in Public Secondary Schools by Sub-County, 2013–2014	33
University and Middle Level College Education	33
Table 12.15: Student Enrolment in Public Technical Institutions by Sex, 2013-2014	33
Table 12.16: Student Enrolment in Public Youth Polytechnics by Sub-County and Sex, 2013-2014	33
Table 12.17: Enrollment at KMTC campuses, 2012 – 2014	34
Table 12.18: KMTC Lecturers by sex and campus, 2012-2014	34
Table 12.19: Enrollment in Machakos Teachers Training College, 2012 – 2014*	34
Table 12.20: University Enrollment, 2013/2014-2014/2015* Academic years	35
Table 12.21: Scott Christian University Enrollment, 2013-2014	35
Adult Education	35
Table 12.22: Adult Education Centres by Sub-County, 2013 – 2014	35
Table 12.23: Teachers involved in adult education by sex and Sub-county, 2013-2014	36
Table 12.24: Adult education basic literacy enrollment by sex and sub-county 2013 – 2014	36
Table 12.25: Adult education Enrollment in post literacy by sex and sub-county, 2013-2014	37
Table 12.26: Enrollment in NFE Programmes by sex, 2013-2014	37
Table 12.27: Enrollment in NFE Programmes by sex and sub-county, 2013-2014	37
Table 12.28: Adult education examination enrolment by sex and type of examination, 2013-2014	38

Table 12.29: Adult Education Proficiency Test Results by Sex and Sub-County, 2013 – 2014	38
Public Health	39
Level 5 - County hospitals. These are regional centres which provide specialised care including intensive care and life support and specialist consultations. These are referral points for the sub county hospitals	39
Table 12.1: Health Facilities by Ownership and Sub County, 2014*	40
Table 12.2: Hospital Beds and Cots by Sub County	41
Table 12.3: Outpatient morbidity for patients below 5 years of age by Sub-County, 2014* ..	42
Table 12.4: Outpatient morbidity for patients above 5 years of age by Sub-County, 2014* ..	43
Table 12.5: Registered Medical Personnel per Cadre, 2013-2014	44
Public Finance	45
Table 13.1: National Government allocation, 2013 – 2015*	45
Table 13.2: National Government Allocation 2013 – 2014	45
Table 13.3: Approved County Budget and expenditure FY 2013/14	46
Table 13.4: Approved County Budget and expenditure FY 2014/15	47
Table 13.5 CDF Allocations by Constituency 2013/14 – 2014/15*	47
Table 13.6: CDF Bursary Beneficiaries in Secondary and Colleges, 2013-2014	48
Table 13.7: County Government Bursary in Secondary and Colleges by Constituency, 2013-2014	48
Money and Banking.....	49
Table 14.1: Banks by Sub-County, 2014.....	49
Labour.....	50
Table 15.1: Wage Employment by Sector, 2013-2014	50
Governance.....	51
Registration of Persons	52
Table 16.1: ID applicants by sex and Sub-county, 2013 – 2014	52
Table 16.2: ID Cards Received by Sex and Sub-County, 2013-2014	52
Table 16.3: ID Cards Collected by Sex and Sub-County, 2013-2014	52
Table 16.4: Duplicate ID Cards by Sex and Sub-County, 2013-2014	53
Kenya Police Service	53
Table 16.5: Traffic Accidents, 2013 – 2014.....	53
Table 16.6: Persons Reported to Police to have Committed Offences Against Morality and Other Offences against Persons by Sex, 2012-2014.....	54
Judiciary	54
Table 16.7: Distribution of Judicial officers by Court Station 2014	54

Table 16.8: Cases Filed 2013-2014(High Court)	55
Table 16.9: Cases Filed 2013-2014 (Chief Magistrate Court)	55
Prisons	56
Table 16.10: Persons Committed for imprisonment by duration, 2011 – 2014	56
Table 16.11: Penal Code Cases, 2010-2014	56
Table 16.12: Convicted Prisoners by type of offence, 2011-2014	57
Table 16.13: Convicted Prison Population by age, 2011–2014	57
Table 16.14: Prison Personnel by Sex, 2013-2014.....	57
Probation	58
Table 16.15: Probation Personnel and Offenders by Sex, 2013-2014.....	58
Table 16.16: Prisoners Serving Probation Orders by sex and Type of Offence, 2013-2014	58
Table 16.17: Prisoners Serving Community Service Order by sex and Type of Offence, 2013 – 2014	59
Table 16.18: Prisoners Serving After Care services by sex and Type of Offence, 2013 – 2014	60
Table 16.19: Probation staff by sex, 2013-2014.....	60
Social Services	61
Table 17.1: Funds Disbursement by Category, 2013/14 - 2014/15	61
Additional Information	62
Kenya’s 47 Counties.....	76

List of Abbreviations, Acronyms, Symbols

ANC	Antenatal Care
CDF	Constituency Development Funds
CFA	Community Forest Association
CPE	Certificate of Primary Education
DAP	Di-Ammonium Phosphate
E/W	East/West
ECD	Early Childhood Education
FY	Financial Year
HH	Household
HIV	Human Immunodeficiency Virus
ID	Identity Card
KCPE	Kenya Certificate of Primary Education
KCSE	Kenya Certificate of Secondary Education
KM	Kilometer
KNBS	Kenya National Bureau of Statistics
KERRA	Kenya Rural Roads Authority
KENHA	Kenya National Highways Authority
KURA	Kenya Urban Roads Authority
LM	Lower Midland
NPR	Not Previously Registered
S/NO	Serial Number
SHGs	Self Help Groups
TSC	Teachers Service Commission
UM	Upper Midland

Symbols and Conventions Used

The following symbols have been used in this publication

" Means they have the same unit"

“.” Means figures not available

“-“ Zero or negligible

Rounding of Figures: In tables where figures have been rounded to the nearest final digit, there may be an apparent slight discrepancy between the sum of the constituent items and the total as shown.

Introduction

This County Statistical Abstract is the single source of data covering a series of the last two completed years. It contains a comprehensive set of information that is useful for any form of analytical work. The preparation of this abstract has been coordinated by the Kenya National Bureau of Statistics in collaboration with the County Government of Machakos, National Government Departments and other stakeholders represented in the county. The information is compiled mainly from the administrative records and partly from the recent Surveys and Censuses. The source of the statistical data is shown under each table.

The publication aims at providing statistical information on economic, demographic and social dimensions in Machakos County. Being the first publication of its kind, its content may not meet detailed requirements of all users. Additional information, whenever available, will be supplied by the Bureau on request. All enquiries relating to statistical matters should be addressed to KNBS.

Structure of County Governments

The current Constitution was promulgated on 27th August 2010 providing for a two tier government structure with one National Government and forty seven devolved County Governments.

County Governments consist of two arms, namely the County Assembly and the County Executive. The functions of County Governments as contained in the Fourth Schedule (Constitution 2010) include:- Finance and Economic planning; Roads, Public Works and Transport; Health and Sanitation; Education and ICT; Agriculture and Irrigation; Livestock, Fisheries and Veterinary Services; Trade, Industry and Cooperative Development; Land, Housing, Physical planning and Urban Development; Water Development, Environment and Natural Resources and Tourism, Culture, Sports and Social Development.

The County Assembly

The County Assembly is vested with the legislative authority of county laws, general oversight of the County Government and representation of the people. It consists of Members of County Assembly (MCAs) elected from different Assembly Wards in the county, nominated MCAs representing special interests such as persons with disability and the youth as prescribed by an Act of Parliament, and the Speaker who is an ex-officio. The head of the County Assembly is the Speaker, who is also the Chairman of the County Assembly Service Board. The composition of the County Assembly for Machakos County is as follows:-

Speaker (Ex-officio)	1
Elected MCAs	40
Nominated MCAs	19
Total	60

The County Executive

The Executive arm of the County Governments comprise of The Governor, The Deputy Governor, The County Executive Committee and the County Public Service. The County Executive Committee is appointed by the Governor with the approval of the County Assembly. The Governor and Deputy Governor are elected by registered voters in the county in a general election, for not more than two terms of five years each. The Governor and Deputy Governor are the head and deputy head of the County Executive, respectively.

The County Governor and Deputy County Governor are the Chief Executive and Deputy Chief Executive of the county, respectively. Each county is run by an executive committee, consisting of:

- Governor, elected directly by the people
- Deputy Governor, elected as running mate of the successful candidate for Gubernatorial
- Committee members not exceeding a third (or ten where a county assembly has more than 30 members) of the members of the respective county assembly
- County Secretary nominated by the governor and approved by the county assembly, who will double up as head of the county public service, and secretary to the county executive committee

For Machakos County, the County Executive Committee comprises of:-

The Governor	1
The Deputy Governor	1
The County Secretary	1
The CEC Members	10
Total	13

Machakos County Government

Mission Statement

To provide effective leadership and a conducive environment for social economic cultural and political development of the County through policy formulation and tracking results

County Vision

To be a leading County in sustainable utilization of natural resources, ensuring Social and economic sustainability for the prosperity for all

Overview of the County

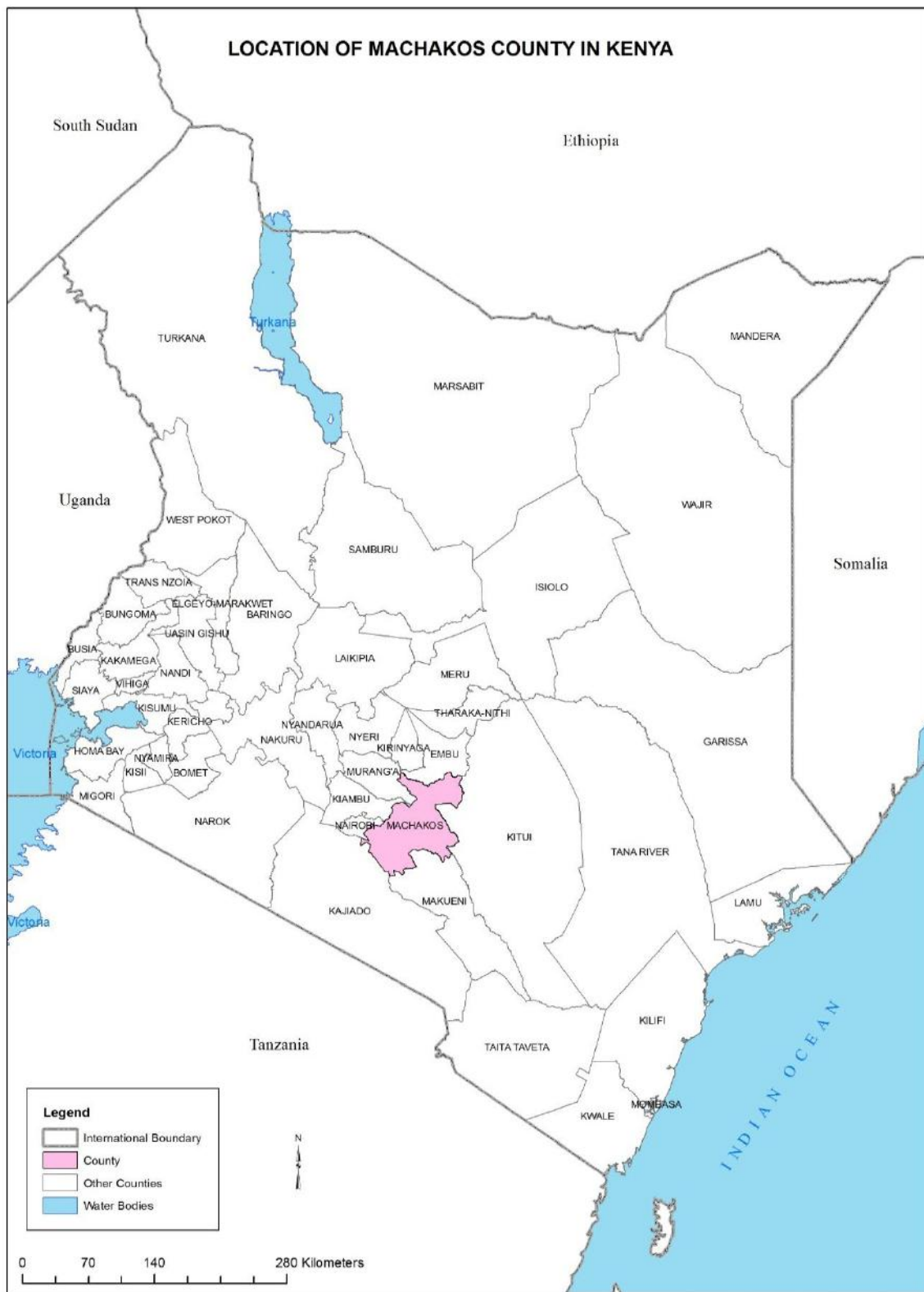
Machakos County is one of the Counties located in the former Eastern province. It borders a total of 8 Counties namely; Embu to the North, Kitui to the East, Makueni to the South, Kajiado to the South West, Murang'a and Kirinyaga to the North West, Nairobi and Kiambu to the West. The County stretches from latitudes 0° 45' South to 1° 31' South and longitudes 36° 45' East to 37° 45' East. It has an altitude of 1000 - 1600 meters above sea level.

The County had a Total Population of 1,098,584 people, 264,500 Households and it covers an area of 6,208 SQ. KM as at 2009 Census. The Population density was 177 persons per SQ. KM. The population was projected to be 1,179,215 by the year 2015. The Akamba people are the dominant habitants of Machakos County.

The County is mainly semi-arid with a hilly terrain covering most parts. Subsistence agriculture is practiced with Maize and drought-resistant crops such as fruits, sorghum and millet being grown.

The main economic activities in the county include sand harvesting and industrial production mainly in Mavoko Sub-County. The County is the host to Masinga dam which produces electricity for the Country, the proposed techno-city (Konza), KMC, among other industries.

Map: Location of Machakos County in Kenya



Prepared by: The Kenya National Bureau of Statistics: Cartography/GIS Section:
Source: 2009 Population Census

This map is not an authority on delineation of boundaries

Administrative and Political Units

This section presents information on the administrative and political units in the county disaggregated by constituent sub-units. It gives the distribution of administrative units by sub-county, divisions and locations by political units in terms of constituencies and wards.

Notes and Definitions

County: It is an area that is demarcated as a devolved unit as stated under Article 6(1) of the Kenya's Constitution and specified in the First Schedule of the Constitution;

Sub County: Refers to both Administrative Units of National Government and County Government. In most areas it coincides with the Constituency area.

County Assembly: Means an assembly constituted in the county in accordance with Article 177 of the Constitution;

Constituency: Is an area demarcated as stated under Article 89 of the Kenya's Constitution for the purpose electing a member of the National Assembly. There are 290 constituencies in Kenya

Ward: Is an electoral area within a county delimited in accordance with Article 89 of the Kenya's Constitution for the purpose of the electing a the member of the County Assembly. There are 1450 wards in Kenya

Table 1.1: Administrative Units by Sub-County, 2014

Sub-County	Divisions	Locations	Number
			Sub-Locations
Machakos Town	2	13	39
Kangundo	3	9	25
Yatta	3	8	23
Matungulu	3	10	30
Kathiani	1	4	21
Athi River	4	3	8
Masinga	2	9	29
Mwala	4	15	58
Total	22	71	233

Source: Ministry of Interior and Coordination of National Government, Machakos County

Table 1.2: Political Units, 2014

Constituency	Number
	County Assembly Wards
Machakos Town	7
Kangundo	4
Yatta	5
Matungulu	5
Kathiani	4
Mavoko/Athi River	4
Masinga	5
Mwala	6
Total	40

Source: Independent Electoral and Boundaries Commission

Land and Climate

This section contains data on Land Area, topography and climate.

Notes and Definitions

Topography: *refers to the geographic features of a location. The features includes the mountains, peaks valleys etc.*

Climate: *The weather conditions prevailing in an area in general or over a long period or a region with particular prevailing weather conditions. It includes temperature, air pressure, humidity, precipitation, sunshine, cloudiness, and winds.*

Rainfall: *The amount of rain that falls on an area over a period of time. The rainfall data is for a weather station within each sub county.*

Land Area: *Refers to an area in square kilometres of the land-based portions of standard geographic areas.*

Temperature: *Refers to a measure of the warmth or coldness of a place with reference to some standard value.*

Table 2.1: Surface area by Category, 2014

Category	(Km ²)
	Area
Total Area	6,208.2
Arable Area	3,720.2
Non-Arable Land	2,436.0
Water Mass	124.0
Rural Area	3,793.4
Urban Area	2,414.8

Source: Ministry of Agriculture, County Government of Machakos

Table 2.2: Topography

Type of Geography	Units	2014
Altitude: Highest point	: metres a.s.l	1,600
Altitude: Lowest point	: metres a.s.l	1,000
Latitudes	: degrees N/S	0° 45'-1°31' South
Longitudes	: degrees E/W	36° 45'-37° 45' East

Source: Meteorological Department, Machakos County

Table 2.3: Climate, 2013 – 2014

	Unit	2013	2014*
Rainfall (annual average)	: mm	54.4	46.2
Long rains (average)	: mm	107	88.7
Short rains (average)	: mm	89.9	57.6
Temperature (annual average Lowest)	: °C	14.0	14.4
Temperature (annual average highest)	: °C	25.5	26.0
Temperature (annual average)	: °C	19.8	20.2

Source: Meteorological Department, Machakos County

Long rains: March, April & May

Short rains: October, November & December

*Provisional

Table 2.4: Rainfall Statistics, 2013-2014

Month	2013		2014*	
	Rainy days	Amount (mm)	Rainy days	Amount (mm)
Jan	4	50.4	-	-
Feb	-	TR	8	80
March	7	116.9	9	207.4
April	7	184.1	8	44
May	4	20.1	6	14.8
June	-	0.3	4	9.7
July	1	2.7	-	1.3
August	-	0.6	3	33.9
September	1	2.5	4	13.6
October	2	6.4	3	26.4
November	15	107	12	104.8
December	8	156.3	7	41.7
TOTAL	49	647.3	64	577.6

Source: Katumani Agro Meteorological Station, Machakos County

TR means TRACE (Not Recorded)

Table 2.5: Temperature Statistics, 2013-2014

Month	Degree Celcius			
	2013		2014*	
	MIN MN	MIN MX	MIN MN	MN MX
Jan	14.3	27	13.6	26.9
Feb	14.6	28.5	15.1	27.1
March	16.3	28.2	15.3	25.7
April	15.9	25.8	15.2	25.3
May	13.8	24.7	14.5	25.2
June	12.3	22.1	13.2	24.1
July	11.3	23.3	12.4	23.5
August	12.1	23.2	12.8	24.5
September	12.8	26.3	13	25.2
October	14	27.5	14.8	27.2
November	15.6	25.3	15.5	25.4
December	14.6	24	14.7	24.9
TOTAL	167.6	305.9	170.1	305

Source: Katumani Agro Meterological Station, Machakos County

*Provisional

Population and Vital Statistics

This section provides information on population and vital statistics by census year, sex and constituency; registration of births and deaths by place of occurrence in Machakos County.

Notes and Definitions

Density: Refers to the number of persons per square kilometre, obtained by dividing the enumerated persons in a given area by the size of the area expressed in KM²

Area: Is the extent of a surface enclosed within a specified boundary, expressed in square kilometres. This excludes areas covered by water.

Birth: Birth is the complete expulsion or extraction from its mother of a product of conception, irrespective of the duration of pregnancy.

Death: Death is the permanent disappearance of all evidence of life at any time after live birth has taken place (postnatal cessation of vital functions without capability of resuscitation). This definition excludes fetal deaths.

Expected Birth or Expected Death: Is derived from the prevailing fertility or mortality conditions and total female population of reproductive age or the total population. The number of expected births or deaths is calculated using age-specific birth and death rates.

Place of Occurrence: It is where birth or death occurs.

Coverage rate: Coverage rate is basically the percentage of registered events out of the total number of expected events. Although the denominators ideally should be the total number of events which occurred, the actual number of such events is unknown and hence estimated as 'expected events'.

Births or Deaths Registered at Health Facilities: Refer to births or deaths that occur at a health facility and a notification is issued by a health worker at the facility.

Births or Deaths Registered outside Health Facilities: Refer to births or deaths that occur at home and a notification is issued by an Assistant Chief.

Selected Age Groups: Refer to special age groups as follows:

- Children under one year
- ECDE (3-5 years),
- Primary (6-13 years)
- Secondary (14-17 years)
- Youth (18-35 years),
- Children (under 18 years),
- Voters or Adults (18+ years),
- Women of reproductive age (15-49 years),
- Active Labour Force (15-64 years)
- Elderly (65+ years).

Population Size and Distribution

Table 3.1: Population Trend by Sex, Households and Density, Years 1969 – 2009

Census Year	Male	Female	Total	HHs	Av. HH Size	Approx. Area (Sq.Km)	Density (pop/Km ²)
1969	5,482,381	5,460,324	10,942,705	1,938,186	5.6	581,313	18.8
1979	7,607,113	7,719,948	15,327,061	2,956,369	5.2	581,313	26.4
1989	10,628,368	10,815,268	21,443,636	4,352,751	4.9	581,313	36.9
1999	14,205,589	14,481,018	28,686,607	6,371,370	4.5	581,313	49.3
2009	19,192,458	19,417,639	38,610,097	8,767,954	4.4	581,313	66.4

Source: Kenya National Bureau of Statistics

Table 3.3: Population by Age and Sex, 2010 – 2014

Age	2010			2011			2012			2013			2014			Number
	Male	Female	Total	Male	Female	Total	Male	Female	Total	Male	Female	Total	Male	Female	Total	
0-4	75,286	73,605	148,891	76,148	74,119	150,267	77,038	74,663	151,701	77,954	75,237	153,191	78,890	75,835	154,725	
5-9	75,225	73,061	148,286	76,087	73,571	149,658	76,976	74,112	151,087	77,891	74,681	152,572	78,826	75,274	154,101	
10-14	72,831	69,809	142,639	73,665	70,296	143,961	74,525	70,813	145,338	75,411	71,357	146,768	76,317	71,924	148,241	
15-19	64,958	58,319	123,277	65,702	58,727	124,429	66,469	59,158	125,628	67,260	59,613	126,872	68,067	60,086	128,154	
20-24	50,181	51,874	102,056	50,756	52,236	102,993	51,349	52,620	103,969	51,960	53,025	104,984	52,583	53,446	106,029	
25-29	43,007	47,332	90,340	43,500	47,663	91,163	44,008	48,013	92,021	44,531	48,382	92,913	45,066	48,766	93,832	
30-34	36,576	39,026	75,602	36,995	39,298	76,293	37,427	39,587	77,014	37,872	39,891	77,763	38,327	40,208	78,535	
35-39	30,180	31,664	61,845	30,526	31,885	62,412	30,883	32,120	63,002	31,250	32,366	63,616	31,625	32,624	64,249	
40-44	22,173	23,603	45,776	22,427	23,768	46,195	22,689	23,943	46,631	22,958	24,127	47,085	23,234	24,318	47,552	
45-49	20,494	23,169	43,663	20,729	23,330	44,059	20,971	23,502	44,473	21,220	23,682	44,903	21,475	23,871	45,346	
50-54	17,073	18,259	35,332	17,269	18,386	35,655	17,470	18,521	35,992	17,678	18,663	36,342	17,890	18,812	36,702	
55-59	13,462	14,983	28,445	13,616	15,087	28,704	13,775	15,198	28,974	13,939	15,315	29,254	14,107	15,437	29,543	
60-64	10,600	11,194	21,794	10,721	11,272	21,993	10,847	11,355	22,201	10,976	11,442	22,417	11,107	11,533	22,640	
65-69	6,265	8,322	14,586	6,336	8,380	14,716	6,410	8,442	14,852	6,487	8,506	14,993	6,564	8,574	15,138	
70-74	6,183	7,194	13,377	6,254	7,244	13,498	6,327	7,297	13,624	6,402	7,353	13,755	6,479	7,412	13,890	
75-79	3,614	4,841	8,455	3,656	4,874	8,530	3,698	4,910	8,608	3,742	4,948	8,690	3,787	4,987	8,774	
80+	7,500	11,810	19,311	7,586	11,893	19,479	7,675	11,980	19,655	7,766	12,072	19,838	7,859	12,168	20,028	
Total	555,608	568,064	1,123,672	561,975	572,031	1,134,005	568,537	576,234	1,144,770	575,297	580,660	1,155,957	582,205	585,275	1,167,480	

Source: Kenya National Bureau of Statistics

Table 3.2: Population Projections of selected ages, 2013 – 2014

Age Years	2013			2014*		
	Males	Females	Total	Males	Females	Total
Under 1	15,530	15,284	30,817	15,717	15,406	31,125
1-2	30,714	29,850	60,567	31,085	30,088	61,173
3-5	48,428	45,579	94,000	49,009	45,941	94,941
6-13	121,957	116,890	238,852	123,422	117,818	241,247
14-17	55,627	51,268	106,903	56,295	51,675	107,981
18-24	78,220	75,041	153,250	79,158	75,636	154,783
18-35	169,418	172,472	341,880	171,452	173,841	345,282
< 18	272,256	258,872	531,138	275,527	260,929	536,468
18 +	303,041	321,788	624,819	306,678	324,346	631,012
15-49		281,086	281,086		283,319	283,319
15-64	319,644	326,506	646,149	323,481	329,101	652,582
65 +	24,397	32,879	57,276	24,689	33,141	57,830

Source: Kenya National Bureau of Statistics

Vital Statistics

Table 3.4: Births and Deaths Coverage, 2013 –2014

Year	2013		2014*	
	BIRTHS	DEATHS	BIRTHS	DEATHS
Reported (Number)	22,665	7,759	25,457	7,329
Coverage (%)	44.2	54.7	49.6	48.9

Source: Civil Registration Services, Machakos County

*Provisional

Table 3.5: Registered Births and Deaths by Sex, 2013 –2014

Year	2013		2014*	
	MALE	FEMALE	MALE	FEMALE
Births	11,567	11,098	13,039	12,418
Deaths	4,273	3,486	4080*	3249*

Source: Civil Registration Services, Machakos County

*Provisional

Table 3.6: Registered Births by Sub-County and Place of Occurrence, 2013-2014

Sub-County	Number			
	2013		2014*	
	Health Facility	Home	Health Facility	Home
Athi River	7,541	154	7,541	64
Kathiani	1,350	321	1,460	374
Machakos	7,250	335	8,894	362
Masinga	754	231	783	352
Mwala	321	455	541	349
Yatta	1,102	522	1,117	573
Kangundo	1,490	321	2,206	198
Matungulu	253	265	322	321
Total	20,061	2,604	22,864	2,593

Source: Civil Registration Services, Machakos County

*Provisional

Table 3.7: Registered Deaths by Sub-County and Place of Occurrence, 2011-2014

Sub-County	Number							
	2011		2012		2013		2014*	
	Health Facility	Home	Health Facility	Home	Health Facility	Home	Health Facility	Home
Athi River	177	584	98	332	462	120	418	158
Kathiani	157	489	154	202	321	358	263	432
Machakos	756	1,256	564	1,548	1,651	947	1,654	854
Masinga	22	299	18	351	22	410	12	398
Mwala	78	651	71	674	102	748	104	710
Yatta	124	654	184	347	250	674	324	522
Kangundo	88	344	157	320	412	504	467	431
Matungulu	35	321	44	354	65	713	65	517
Total	1,437	4,598	1,290	4,128	3,285	4,474	3,307	4,022

Source: Civil Registration Services, Machakos County

*Provisional

Table 3.8: Registered Births and Deaths by Sub-County, 2013-2014

Sub-County	Number			
	2013		2014*	
	Births	Deaths	Births	Deaths
Athi River	7,695	582	7,605	576
Kathiani	1,671	679	1,834	695
Machakos	7,585	2,598	9,256	2,508
Masinga	985	432	1,135	410
Mwala	776	850	890	814
Yatta	1,624	924	1,690	846
Kangundo	1,811	916	2,404	898
Matungulu	518	778	643	582
Total	22,665	7,759	25,457	7,329

Source: Civil Registration Services, Machakos County

*Provisional

Table 3.9: Registered Deaths by Major Cause, 2013-2014

Cause Of Death	Number			
	2013		2014*	
	Health Facility	Home	Health Facility	Home
Malaria	58	365	231	246
Pneumonia	355	562	321	462
Cancer	54	75	85	68
Aids	435	37	514	125
Tuberculosis	62	654	254	521
Anaemia	69	30	102	35
Road Traffic Accidents	30	-	22	-
Other Accidents	96	14	167	10
Heart Diseases	255	433	264	213
Menegitis	120	12	155	18
Other Causes	1,751	2,292	1,640	725
Totals	3,285	4,474	3,755	2,423

Source: Civil Registration Services, Machakos County

*Provisional

Agriculture

This section provides information on agro-ecological zones, land potential by selected sub-counties, type of crops grown, the total area cropped, amount produced and their value. It also gives information on average retail prices for farm inputs, acreage under irrigation by type of crop grown.

Notes and Definitions

High potential: Clay-loam soil with sufficient manure and good drainage

Medium potential: Sandy-loam soil with high drainage

Low potential: Sandy soil with very high drainage and low manure content

Agro-Ecological Zones (AEZ): Refers to the Division of an area of land into smaller units, which have similar characteristics related to land suitability, potential production and environmental impact. The zone groups are temperature belts defined according to the maximum temperature limits within which the main crops in Kenya can flourish.

Reporting period: The data is reported on calendar year as opposed to seasonal basis. Therefore, for crops where planting and harvesting may take place more than once in the year, the production data is aggregated to get the annual data

Agricultural Area: refer to area under the crop or the area harvested. For a particular crop, the area reported is on what has been harvested

Arable land: Is the land under temporary agricultural crops (multiple-cropped areas are counted only once), temporary meadows and pastures (for less than five years), land under market and kitchen gardens, barnyards, and land temporarily fallow (for less than five years). The abandoned land resulting from shifting cultivation is not included in this category. Data for “Arable land” are not meant to indicate the amount of land that is potentially cultivable.

Crop production: Refers to the actual harvested production from the field and excludes threshing losses and that part of crop not harvested for any reason.

Farm gate Prices: The value of production given in this report uses farm gate prices as the basis of valuation of the production from the county. Farm gate price is the price paid to farmer at the farm level and hence excludes margins on transport.

Table 4.1: Agro-Ecological Zones for the Sub-County

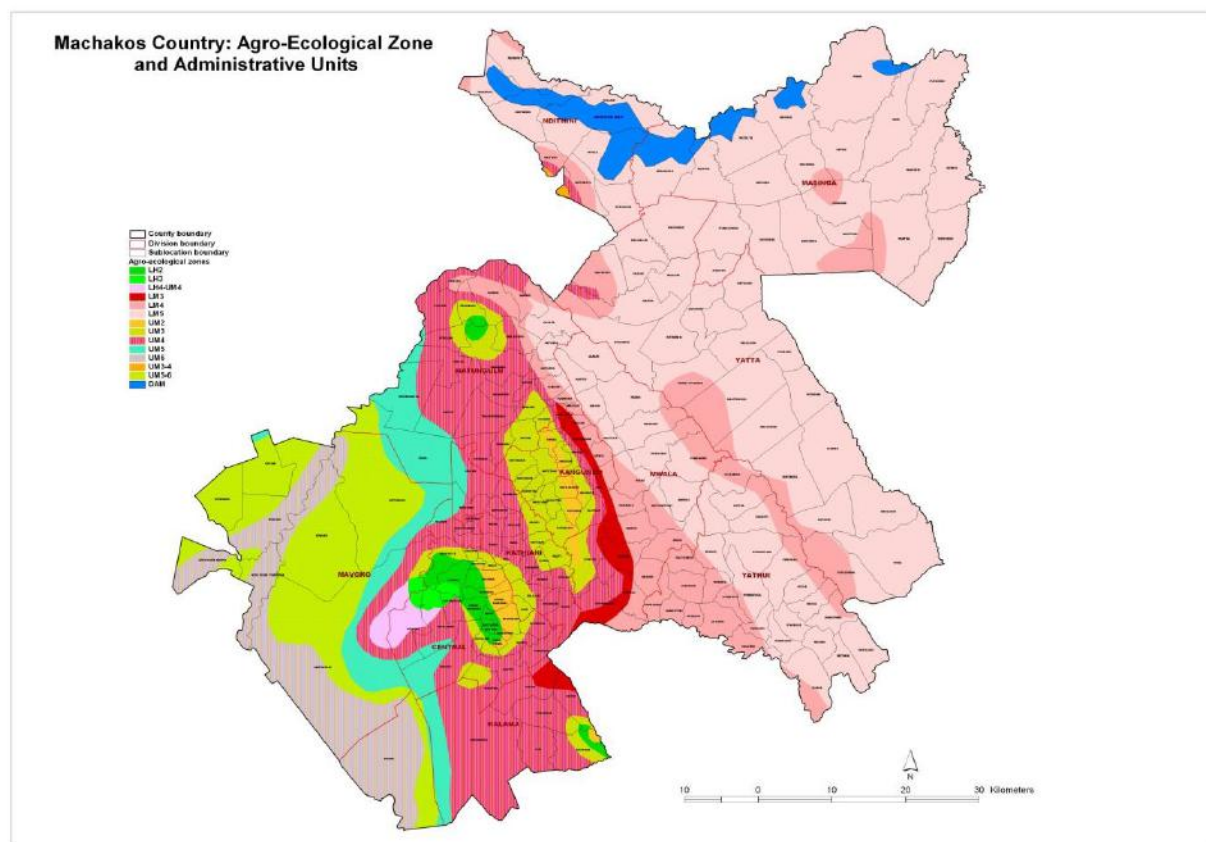
Zone	Sub county	Enterprises
UM2-3	Matungulu, Kangundo, Kathiani, and Machakos	Coffee, Maize, Beans and, Dairy
UM 5-6	Mavoko, Matungulu	Ranching
LM3	Matungulu, Kangundo, Kathiani, Machakos, Mwala, Yatta and, Masinga	Mangoes, Maize, Beans, Dairy, Pigeon peas, Cow peas and, indigeneous poultry.
LM4	Matungulu, Kangundo, Kathiani, Machakos, Mwala, Yatta and, Masinga	Mangoes, Maize, Beans, Dairy, Pigeon peas, Cow peas and, indigeneous poultry.
LM5	Matungulu, Mwala, Yatta and, Masinga	Mangoes, Maize, Beans, Dairy, Pigeon peas, Cow peas and, indigeneous poultry.

Source: Department of Agriculture, County Government of Machakos

LM- MIDLAND

UM- UPPER MIDLAND

Fig.1: Agro-Ecological Map of Machakos County



Source: Department of Agriculture, Machakos County

Table 4.2: Land Potential by Sub-County and area, 2014

KM ²	
Land Potential	2014*
High Potential	435.19
Medium Potential	1,976.04
Low Potential	3,656.70
All Other Land	140.28
Total	6,208.20

Source: Department of Agriculture, County Government of Machakos

High Potential: Annual rainfall of 857.5mm or more

Medium Potential: Annual rainfall of 612.5mm-857.5mm

Low Potential: Annual rainfall of 612.5mm or less

Table 4.3: Area Cropped, Production and Value of Various Crops, 2013 – 2014

Crop	Area cropped (Ha)		Production (Ton)		Value (KSh Million)	
	2013	2014*	2013	2014*	2013	2014*
Maize	133,408	139,090	92,099	62,477	2,031.30	2,000.04
Beans	73,865	64,369	55,930	19,377	3,355.80	1,964.80
Sorghum	11,664	9,693	13,065	7,355	310.42	153.95
Millet	936	1,853	708	3,164	44.70	315.22
Cowpeas	21,246	169,358	3,172	14,451	97.28	492.73
Pegion peas	28,348	36,734	127,509	40,476	8,288.09	2,885.92
Green grams	13,045	12,097	3,820	9,194	375.32	872.90
Sweet potatoes	3,477	3,562	43,134	42,029	2,728.78	2,563.79
Cassava	2,794	3,216	31,505	35,313	850.64	1,024.08
Irish potatoes	10	10	68	6	1.39	0.21
Tomato	724	447	11,548	6,189	323.21	355.88
Cabbage	62	133	841	1,049	13.37	18.59
Kales	392	420	3,077	3,515	56.85	78.82
Carrots	14	7	120	64	3.15	1.60
Banana	1,219	1,188	20,682	9,873	301.30	177.99
Mangoes	5,133	5,593	51,546	67,320	624.31	835.58

Source: Ministry of Agriculture, Livestock and Fisheries, Machakos County

*Provisional

Table 4.4: Average Retail Prices for Fertilizer, 2013-2014

Input	KSh per Kg	
	2013	2014*
Di-Ammonium Phosphate(DAP)	79	76
Calcium Ammonium Nitrate	47	47
NPK 23:23:0	61	50
Urea	60	52

Source: Department of Agriculture, Machakos County

*Provisional

Livestock

This section provides data on livestock population, production, livestock diseases, and animal slaughter by Sub County. It also provides data on livestock products.

Notes and Definitions

Livestock Primary Products: include products from live and slaughtered animals. Products from slaughtered animals include meat, offals, raw fats, fresh hides and skins. Products from live animals include milk, eggs, honey, beeswax and fibres of animal origin.

Table 5.1: Livestock Population

Type	Number of Animals	
	2013	2014*
Cattle	269,634	245,440
Dairy	41,069	39,950
Beef	228,565	205,490
Goats	247,486	330,300
Dairy	7,622	8,430
Meat	239,864	321,870
Sheep	116,180	102,160
Pigs	4,170	5,500
Rabbits	10,606	16,250
Chicken	993,127	1,688,620
Broilers	88,630	174,800
Layers	129,920	184,100
Indigenous	714,527	1,306,000
Others	60,050	23,720
Donkeys	14,797	18,720

Source: Ministry of Agriculture, Livestock and Fisheries, Machakos County

*Provisional

Table 5.2: Number and Value of Animals Slaughtered by Type, 2013-2014*

Type	Number Slaughtered		Value of Animals Slaughtered(KSh Million)	
	2013	2014*	2013	2014*
Cattle	24,319	23,276	923.89	884.50
Goats	40,902	35,453	171.79	148.90
Sheep	8,189	5,937	34.40	24.90
Pigs	211	269	3.30	4.20
Chicken	55,480	41,163	37.40	27.80
Camels	2,986	1,552	209.02	108.60

Source: Department of Agriculture, County Government of Machakos

*Provisional

Table 5.3: Quantity and Value of Milk production by Type of Animal, 2013-2014

Type	Quantity (Kg Million)		Value (KSh Million)	
	2013	2014*	2013	2014*
Animals	41.05	50.21	1,847.38	2,259.40

Source: Department of Agriculture, County Government of Machakos

*Provisional

The Milk production is for Cattle, Goats, Sheep and Camels

Table 5.4: Quantity and Value of Animal products, 2013-2014

Products	Quantity (Kg)		Value (KSh Million)	
	2013	2014*	2013	2014*
Beef	3,164,500	8,122,677	950.00	3,250.00
Mutton	984,610	268,700	394.00	107.50
Eggs	1,010,216	273,870	303.10	82.10
Poultry Meat	3,223,865	1,774,690	1,289.50	709.90
Honey	162,800	170,500	81.40	82.30
Pork	25,000	379,000	7.50	144.00
Milk	41,052,890	50,208,830	1,847.40	2,259.40

Source: Department of Agriculture, County Government of Machakos

*Provisional

Table 5.5: Bee hives, Quantity and Value of Honey Produced, 2013–2014

		Number	
		2013	2014*
Bee hives			
	KTBH	5,350	28,910
	Lang stroth	5,867	8,200
	Log hives	23,239	21,770
	Box	..	20
	Total	34,456	58,900
Honey Harvested in-Kg		162,860	170,500
Value of Honey sold(KSh million)		81.4	82.3

Source: Department of Agriculture, County Government of Machakos

*Provisional

Retail Price and Consumer Expenditure

This section presents statistics relating to retail and wholesale commodity prices for selected commodities in the County.

Notes and Definitions

Retail and wholesale prices are collected every week from the retail and wholesale markets, respectively, to determine the variation in both retail and wholesale prices. Weighing scales are used to measure the quantity of the commodity to convert non-standard units to standard units.

Table 6.1: Wholesale Price of Some Selected Food Commodities, January - December, 2014*

KSh														
Commodity	Selling Unit		Average Price											
	Unit	Kg	Jan	Feb	Mar.	April	May	Jun.	July	Aug	Sept.	Oct.	Nov.	Dec.
Dry Maize	Bag	90	3,100	3,200	3,000	3,100	3,100	3,200	3,100	3,000	2,700	2,800	2,600	2,600
Green Maize	Ext Bag	115	2,700	2,500	2,400	2,500	2,400	2,700	2,600	2,600	2,600	2,650	2,700	2,700
Beans Canadian	Bag	90	6,500	5,000	6,200	6,700	6,500	6,400	5,900	5,600	5,600	6,000	6,000	5,400
Beans Rosecoco	Bag	90	7,000	5,800	6,500	6,500	6,400	6,300	5,800	5,500	5,400	5,800	5,900	5,000
Beans Mwitemania	Bag	90	6,000	4,700	6,000	6,200	5,800	5,800	5,500	5,300	5,100	5,200	5,800	5,000
Green Gram	Bag	90	..	8,000	8,000	8,200	8,000	8,500	9,000	8,500	9,500	9,500	9,500	10,000
Cowpeas	Bag	90	6,000	5,500	4,800	4,800	4,800	4,800	4,600	4,600	4,500	4,700	4,700	4,500
Fresh Peas	Bag	51	2,900	3,000	2,700	2,900	3,200	3,000	3,000	3,000	2,900	2,600	2,400	..
Red Irish Potatoes	Bag	110	3,600	3,400	4,000	4,000	4,500	3,800	3,000	3,000	3,400	4,600	4,600	4,000
White Irish Potatoes	Bag	110	3,600	3,400	4,100	4,300	4,700	4,000	3,200	3,300	3,500	4,800	4,700	4,200
Cassava Fresh	Bag	99	2,400	2,200	2,500	2,500	2,400	2,500	2,600	2,600	2,600	2,500	2,600	2,600
Sweet Potatoes	Bag	98	7,000	6,500	6,500	6,700	6,000	6,000	6,400	6,000	6,200	6,000	6,100	6,000
Cabbages	Ext Bag	126	850	800	800	850	800	850	850	950	1,100	1,200	1,200	850
Cooking Bananas	Med Bunch	22	650	550	550	550	500	550	550	500	500	650	650	500
Ripe Bananas	Med Bunch	14	800	700	700	700	650	700	700	700	700	780	790	750
Carrots	Ext Bag	138	4,500	4,000	3,500	3,000	2,500	2,500	2,600	2,500	3,000	2,800	2,800	3,000
Tomatoes	Lg Box	64	1,500	3,500	4,400	5,000	4,500	4,000	6,000	6,500	5,000	4,500	3,800	4,000
Onions Dry	net	13	2,700	2,400	2,400	2,200	2,300	2,600	2,400	2,400	2,400	2,000	2,000	2,300
Spring Onions	Bag	142	4,000	4,000	4,000	4,600	..	4,600	5,000	4,600	5,000
Capsicums	Bag	50	2,200	2,000	2,200	1,800	1,800	1,800	2,000	2,000	2,000	1,500	2,000	2,000
Brinjals	Bag	44	1,900	1,800	2,000	1,900	1,700	1,900	1,500	1,000	1,400	1,200	1,400	1,500
Oranges	Bag	93	2,800	2,500	2,700	2,600	3,200	3,500	3,500	3,400	3,600
Lemons	Bag	95	800	1,000	1,000	1,000	1,050	1,200	1,200	1,200	..
Mangoes Local	Bag	126	1,000	1,000	900	800	1,800	1,000
Mangoes Ngowe	Sm Basket	25	2,800	2,000	2,300	850	1,500
Pineapples	Dozen	13	800	800	850	900	700	950	850	900	700	980	900	850
Pawpaw	Lg Box	54	1,800	2,000	1,700	1,700	1,800	1,800	1,800	1,800	1,800	1,850	1,900	1,850
Avocado	Bag	90	2,400	2,100	2,000	2,000	1,800	1,800	1,700	2,000	2,600	2,800	2,700	2,700
Kales	Bag	50	650	1,000	800	700	800	1,000	1,000	1,000	950	1,300	1,400	1,300
Eggs	Tray	..	350	330	300	300	320	350	350	350	355	358	260	356

Source: Department of Agriculture, County Government of Machakos

*Provision

Table 6.2: Retail Market Prices for Selected Commodities, January - December, 2014*

Commodity	Selling Unit	Average Price											
		January	February	March	April	May	June	July	August	September	October	November	December
Dry Maize	1 kg	38.0	38.0	40.0	35.0	35.0	40.0	40.0	40.0	40.0	40.0	40.0	40.0
Green Maize	1 cob	20.0	20.0	20.0	30.0	30.0	25.0	25.0	25.0	25.0	25.0	25.0	25.0
Finger Millet	1 kg	100.0	100.0	100.0	100.0	100.0	100.0	100.0	100.0	100.0	100.0	100.0	100.0
Rose coco	1 kg	120.0	115.0	115.0	120.0	125.0	125.0	125.0	125.0	125.0	125.0	125.0	125.0
Nyayo	1 kg	70.0	70.0	80.0	80.0	80.0	75.0	70.0	80.0	80.0	70.0	70.0	70.0
Njahi-Grade 1	1 kg	100.0	100.0	100.0	100.0	100.0	100.0	100.0	100.0	100.0	100.0	100.0	100.0
Green grams	1 kg	120.0	120.0	120.0	120.0	120.0	120.0	120.0	120.0	120.0	120.0	120.0	120.0
Njahi-Yankees	1 kg	115.0	115.0	115.0	115.0	115.0	115.0	115.0	115.0	115.0	115.0	115.0	115.0
Fresh peas	1 kg	174.0	174.0	174.0	174.0	174.0	174.0	174.0	174.0	174.0	174.0	168.0	168.0
Ground nuts	1 kg	120.0	120.0	120.0	120.0	120.0	120.0	120.0	120.0	120.0	120.0	120.0	120.0
Irish/Potatoes	1 kg	20.8	20.8	22.7	24.4	28.6	23.8	22.6	33.3	38.2	23.5	23.5	35.0
Sweet potatoes	1 kg	42.5	42.5	42.5	50.2	50.2	50.2	50.2	56.2	56.2	37.0	37.0	40.0
Cabbage	1 kg	12.6	18.2	18.2	20.4	20.8	13.2	15.0	20.4	26.4	12.7	12.7	12.7
Cooking bananas	1 kg	34.8	34.8	34.8	36.4	34.8	25.0	25.0	28.6	34.0	28.6	28.6	28.6
Ripe bananas	1 kg	47.0	47.0	47.0	47.0	48.0	57.1	57.1	57.1	57.1	33.4	33.4	33.4
Carrots	1 kg	44.4	44.4	44.4	56.4	58.2	30.2	30.2	36.2	36.2	47.0	47.0	47.0
Tomatoes	1 kg	62.5	70.0	62.5	80.0	80.0	66.6	50.0	60.2	80.2	61.5	61.5	61.5
Onions	1 kg	87.0	87.0	87.0	87.0	87.0	90.9	90.9	90.9	90.9	90.9	90.9	90.9
Capsicum	1 kg	100.0	100.0	100.0	100.0	100.0	66.6	66.6	66.6	66.6	76.0	76.0	76.0
Passion fruit	1 kg	145.5	145.5	145.5	125.5	122.4	122.4	122.4	122.4	122.4	133.3	133.3	133.3
Oranges	1 kg	55.6	55.6	55.6	55.6	55.6	76.9	76.9	76.9	76.9	78.4	78.4	78.4
Lemons	1 kg	64.0	64.0	64.0	64.0	62.4	36.4	38.4	38.4	38.4	80.0	80.0	80.0
Mangoes - Local	1 kg	52.2	52.2	52.2	52.2
Pineapple	1 kg	55.8	55.8	55.8	58.2	58.2	58.2	58.2	58.2	56.8	59.0	59.0	59.0
Pawpaw	1 kg	55.6	55.6	55.6	55.6	54.2	48.8	48.8	50.0	50.0	40.0	40.0	50.0
Avocado	1 kg	26.7	26.7	26.7	30.0	30.0	25.0	25.0	26.4	30.2	35.0	35.0	35.0
Kales	1 kg	30.8	30.8	22.4	22.4	22.4	33.3	33.3	33.3	33.3	44.4	44.4	44.4

Source: Department of Agriculture, County Government of Machakos County

*Provisional

Fisheries

The section presents the quantity and value of fish harvested from ponds.

Table 7.1: Small dams stocked, fish ponds and Quantity of fish by Sub-County, 2013-2014

Sub_County	Number					
	2013			2014*		
	Small Dams Stocked	Fish ponds	QTTY fish(KG)	Small Dams Stocked	Fish ponds	QTTY fish(KG)
Machakos	5	324	350	-	325	562
Mwala	3	334	7,255	-	331	1,563
Kathiani	5	140	757	-	140	890
Yatta	3	389	8,049	-	389	9,060
Masinga	2	225	6,604	-	226	2,725
Athi river	2	215	12,587	1	250	10,750
Kangundo	3	145	1,820	-	110	1,820
Matungulu	3	185	1,256	-	148	2,034
Total	26	1,957	38,678	1	1,919	29,404

Source: Department of Fisheries, County Government of Agriculture

Table 7.2: Quantity and value of Fish harvested, 2013-2014

Types of fish	2013		2014*	
	Quantity(KG)	Value (KSh Million)	Quantity (KG)	Value (KSh Million)
Tilapia	32,901	5.90	29,481	4.22
Cat fish	5,777	1.18	24,186	2.01

Source: Department of Agriculture, County Government of Machakos

*Provisional

Cooperatives

The section has data on the number of cooperatives by type, membership, share capital, turnover and sub county. The number of Savings and Credit Cooperatives (SACCOs) by Sub County and performance is also given.

Notes and Definitions

SACCOs: These are cooperatives which provide their members with convenient and secure means for saving money and obtaining credit at affordable interest rates.

Share Capital: Refers to the total of cooperatives' shares that are held by members. It is withdrawn only when one ceases to be a member of the the cooperative.

Table 8.1: SACCOs by Type, Status, Membership and Turnover

Type of SACCO	2014*			
	Number	Number Active	Membership	Turn over(KSh)
Dairy	10	9	..	48.09
Coffee	35	34	44,635	927.40
Transport Sacco	199	199	600	120.23
Livestock	20	11	..	48.09
Housing	33	33	5,147	5.20
Horticulture	3	2	4,222	3.89
Multipurpose	1	1	117	0.58
Sand Harvesting	7	5	3,330	8.00
Handicrafts	4	4	2,095	0.29
Consumers	1	1	47	18.83
Building and Construction	19	19	10,000	5.20
Savings and Credit	85	55	50,247	2,400.00
County union	1	1	54	200.00

Source: Department of Trade, County Government of Machakos

*Provisional

Forestry

This section has data on number and size of gazetted forests and forest production

Notes and Definitions

Gazetted Forest: Any forest area, or woodland or any part thereof, declared by notice in the Kenya Gazette Supplements, and which has a particular environmental, cultural, scientific, or other special significance, to be a nature reserve for the purpose of preserving its biodiversity and natural thereof.

Table 9.1: Forest Cover by Size, 2013 – 2014

Forest type	2013		2014*	
	Number	Size(ha)	Number	Size(ha)
Gazetted forests	4	607	4	607
County Forests Managed by KFS	3	1,826	3	1,826
County Forests	11	7,647	11	7,647
Private Forests	50	287	85	471

Source: Kenya Forest Service, Machakos County

Table 9.2: Quantity and Value of Forest Products, 2013–2014

Main forest products	2013		2014*	
	Quantity	Value (KSh)	Quantity	Value (KSh)
Timber M ³	390.0	406,750.00	3,183.7	7,853,890.00
Poles(tonnes)	12,677.0	2,716,500.00	14,300.0	3,064,285.70
Posts(Tonnes)	4,527.5	646,786.00	5,500.0	785,714.30
Firewood(Tonnes)	905	465,428.60	2,820.0	1,450,285.70
Casuarinnas pole
No. of people engaged in forestry activity	200,000	..	220,000	..
Seedlings production	4,381,255	..	5,724,938	..
Hill tops and slopes and mountain areas protected:	4	..	4	..
Farms engaged in farm forestry	50	..	85	..
Average no. of trees per farm	230	..	250	..
Community Forest Associations (CFA) established	3	..	3	..

Source: Kenya Forest Service, Machakos County

*Provisional

Table 9.3: Forest cover by type, 2013 – 2014

Category Of Forest Cover Type	Percentage	
	2013	2014*
Indigenous Closed Canopy	2.3	2.7
Mangroves
Public Plantation Forests	0.5	0.5
Private Plantation Forests	3	3.1
Open Woodlands	4.7	4.8
Bush Lands	6.4	6.8
Grasslands
Trees On Farmlands	0.58	0.63

Source: Kenya Forest Service, Machakos County

*Provisional

Table 9.4: Forests by Name, Type, Size and Sub-County, 2014*

Sub-County	Name	Type	Size (Ha)
Machakos	Iveti	Gazetted	364.1
	Muumandu	Gazetted	139.2
	Kalimanzalu	KFS managed trust land	110
	Kaseve	County Government Managed Trust land	200
Mwala	Uuni hill	Gazetted	92.7
	Mango hill	KFS managed trust land	45
	Kibauni hill	KFS managed trust land	1671.0
	Kiteta	County Government Managed Trust land	11
Kangundo	Kangundo hill	County Government Managed Trust land	780
Kathiani	Kathiani	County Government Managed Trust land	30
Matungulu	National Park	National Government KWS Managed National Par	2,070.0
Matungulu	Mwatati	County Government Managed Trust land	7.4
Yatta	Mavoloni	County Government Managed Trust land	650
Masinga	Ndithini	County Government Managed Trust land	4140
Masinga	Kauti Hill	County Government Managed Trust land	8
Masinga	Ulutya Hill	County Government Managed Trust land	6

Source: Kenya Forest Service, Machakos County

*Provisional

Energy

Average monthly pump prices of various petroleum products are presented in this section

Notes and Definitions

Pump prices: These are the maximum retail petroleum prices calculated by the Energy Regulatory Authority in accordance with Legal Notice No.196 of 2010.

Table 10.1: Average Monthly Pump Prices for Fuel by Category, 2013 – 2014
KSh

Month	Category (Per Litres)					
	2013			2014*		
	Super Petrol	Diesel	Kerosene	Super Petrol	Diesel	Kerosene
January	111.70	104.10	84.00	110.70	104.80	85.20
February	113.70	106.30	86.70	110.60	105.90	83.20
March	117.80	107.75	88.60	113.70	105.00	84.05
April	117.70	106.50	83.96	114.30	103.90	83.30
May	113.30	102.60	79.60	114.80	104.80	82.90
June	108.30	99.20	81.60	114.70	104.90	82.90
July	109.60	102.90	79.63	116.00	104.80	84.20
August	112.30	104.50	84.07	116.70	103.10	83.19
September	114.00	105.60	85.70	111.70	102.50	83.19
October	112.40	104.60	85.15	111.00	101.80	81.30
November	109.30	103.00	82.30	106.90	94.60	86.45
December	109.40	104.60	82.30	102.10	94.60	86.45
Annual Average	112.46	104.30	83.63	111.93	102.56	83.86

Source: Kenya National Bureau of Statistics

Transport and Communication

This section presents information on the road coverage by type and length. It also covers the transport and communication network and the number of postal service outlets in the County.

Table 11.1: Roads Coverage by Type & Distance, 2013 – 2014

Type of Road	Kilometres	
	2013	2014*
Earth	1,614.8	1,764.8
Murram	635.4	667.1
Bitumen	154.7	218.1
Total	2,404.9	2,650.0

Source: KURA/KERRA/KENHA, Machakos County

*Provisional

Table 11.2 Telephone Services, 2014

Telephone Connections	Number
	2014*
Households with Fixed/Wireless Telephone connections	287
Establishments with Fixed/Wireless Telephone connections	325
National Government Offices with Fixed/Wireless Telephone Connections	30
County Government Offices with Fixed/Wireless Telephone Connections	8

Source: Telkom Kenya, Machakos County

*Provisional

Table 11.3 Postal Services

Post Offices and Letter Boxes	Number
	2014*
Post Offices	15
Letter boxes installed	9,300
Letter boxes rented-Corporate	2,049
Letter boxes rented-Individual	5,398
Letter boxes vacant	1,853

Source: Postal Corporation of Kenya, Machakos County

* Provisional

Note. All the offices in Machakos County are included in this report.

Education

Information on education enrolment by class for pre-primary (ECDE), Primary, Secondary, Technical, middle level colleges and University are given in this section. The indicators that have been computed are Gross Enrolment and the Net Enrolment Rates.

Notes and Definitions

Enrolment in Adult and Continuing Learning is mainly non formal

Schools maintained by the Central Government are classified as "Public" whereas those which receive no grant from the Central Government are classified as "Private" schools.

Net enrolment rate: Enrolment of the official age group for a given level of education expressed as a percentage of the corresponding population.

Gross enrolment rate: Total enrolment in a specific level of education, regardless of age, expressed as a percentage of the eligible official school-age population corresponding to the same level of education in a given school year.

Early Childhood Education

Table 12.1 ECDE centers by category and Sub-County

	Number		
YEAR/CATEGORY	2014*		
SUB-COUNTY	PUBLIC	PRIVATE	TOTAL
Athi River	43	97	140
Kangundo	69	87	156
Kathiani	130	19	149
Machakos	166	156	322
Masinga	134	16	150
Matungulu	84	74	158
Mwala	182	17	199
Yatta	132	62	194
TOTAL	940	528	1,468

Source: Department of Education, County Government of Machakos

*Provisional

Table 12.2: Pupil Enrollment in ECD centers by sex

Year/Category	Number		
	2014*		
Category	Male	Female	Total
Athi River	5,266	4,469	9,735
Kangundo	2,403	2,363	4,766
Kathiani	4,245	3,984	8,229
Machakos	3,826	3,084	6,910
Masinga	2,856	2,568	5,423
Matungulu	2,957	3,002	5,959
Mwala	3,468	3,470	6,939
Yatta	3,470	3,690	7,160
TOTAL	28,490	26,631	55,121

Source: Ministry of Education Science & Technology, Machakos County

*Provisional

Table 12.3: ECDE Schools and Enrolment by Sex, 2014*

Type	Schools	Number		
		Enrolment		
		Boys	Girls	Total
Public	981	21,172	19,900	41,072
Private	357	7,317	6,731	14,048
Total	1,338	28,489	26,631	55,120

Source: Ministry of Education, Science and Technology

*Provisional

Table 12.4: ECDE Enrolments and Access Indicators, 2014*

Indicators	Males	Female	Total
Enrolment (Number)	28,490	26,631	55,121
Gross Enrollment Rates (GER) %	54.3	51.8	53.0
Net Enrollment Rates (NER) %	52.0	49.3	50.7

Source: Ministry of Education, Science and Technology

*Provisional

Primary Education

Table 12.5 Primary Schools by Category and Sub-County, 2013–2014

Year/Category	2013			2014*		
	Public	Private	Total	Public	Private	Total
Athi River	33	32	65	36	40	76
Kangundo	67	7	74	68	9	77
Kathiani	74	15	89	73	19	91
Machakos	132	18	150	135	22	157
Masinga	134	16	150	137	20	157
Matungulu	80	21	101	83	26	109
Mwala	186	17	203	186	21	207
Yatta	128	24	152	135	30	165
TOTAL	834	150	984	852	187	1,039

Source: Ministry of Education Science and Technology, Machakos County

*Provisional

Table 12.6: Primary Schools and Enrolment by Sex, 2014*

Type	Schools	Enrolment		
		Boys	Girls	Total
Public	852	134,090	128,420	262,510
Private	187	14,096	13,356	27,452
Total	1,039	148,186	141,776	289,962

Source: Ministry of Education, Science and Technology

*Provisional

Table 12.7: Primary Enrolment and Access Indicators, 2014*

Indicators	Males	Female	Total
Enrolment (Number)	148,186	141,776	289,962
Gross Enrollment Rates (GER) %	118.3	115.5	116.9
Net Enrollment Rates (NER) %	96.9	96.4	96.7

Source: Ministry of Education, Science and Technology

*Provisional

Table 12.8: Primary School Enrolment by Class, Sex & Sub-County, 2014*

Number																			
Class	Standard 1		Standard 2		Standard 3		Standard 4		Standard 5		Standard 6		Standard 7		Standard 8		Grand Total		
Sub-County	Boys	Girls	Boys	Girls	Boys	Girls	Boys	Girls	Boys	Girls	Boys	Girls	Boys	Girls	Boys	Girls	Boys	Girls	Total
Athi River	1,156	1,134	1,313	1,245	1,363	1,308	1,434	1,480	1,415	1,378	1,413	1,408	1,475	1,333	1,199	1,017	10,768	10,303	21,071
Kangundo	1,515	1,393	1,504	1,396	1,484	1,397	1,601	1,472	1,598	1,457	1,552	1,540	1,517	1,575	1,353	1,388	12,124	11,618	23,742
Kathiani	2,057	1,896	1,919	1,766	2,036	1,793	2,173	1,994	1,995	1,867	2,000	2,022	2,016	2,098	1,568	1,707	15,764	15,143	30,907
Machakos	2,785	2,656	2,821	2,617	3,188	2,524	3,007	2,594	2,753	2,648	2,801	2,676	2,821	2,907	2,338	2,391	22,514	21,013	43,527
Masinga	2,979	2,694	2,805	2,530	2,877	2,591	3,022	2,734	2,751	2,643	2,755	2,740	2,620	2,863	1,968	2,030	21,777	20,825	42,602
Matungulu	2,010	1,882	1,960	1,820	1,934	1,940	2,218	2,025	2,145	2,023	2,187	2,229	2,379	2,274	1,834	2,001	16,667	16,194	32,861
Mwala	3,327	3,085	3,180	2,753	3,074	2,727	3,610	3,157	3,240	3,105	3,181	3,264	3,242	3,327	2,522	2,481	25,376	23,899	49,275
Yatta	2,939	2,896	3,054	2,739	3,043	2,834	3,176	3,074	3,063	2,990	2,819	2,901	2,819	3,012	2,283	2,335	23,196	22,781	45,977
Total	18,768	17,636	18,556	16,866	18,999	17,114	20,241	18,530	18,960	18,111	18,708	18,780	18,889	19,389	15,065	15,350	148,186	141,776	289,962

Source: Ministry of Education Science & Technology

*Provisional

Table 12.9: Teachers in Public Primary Schools by Sub-County, 2014–2015

Sub-County	Number					
	2014			2015*		
	Male	Female	Total	Male	Female	Total
Athi River	85	279	364	402	129	531
Kangundo	296	402	698	345	328	673
Kathiani	345	442	787	320	368	688
Machakos	554	797	1,351	520	843	1,363
Masinga	60	178	238	700	431	1,131
Matungulu	360	875	1,235	384	503	887
Mwala	661	757	1,418	762	640	1,402
Yatta	689	533	1,222	689	583	1,272
TOTAL	3,050	4,263	7,313	4,122	3,825	7,947

Source: Teachers Service Commission, Machakos County

*Provisional

Secondary Education

Table 12.10: Secondary Schools by category and Sub-County, 2013-2014

Year/Category	Number					
	2013			2014*		
	Public	Private	Total	Public	Private	Total
Athi River	13	20	33	13	17	29
Kangundo	23	8	31	27	6	33
Kathiani	27	2	29	29	2	31
Machakos	63	8	71	67	8	75
Masinga	50	2	52	51	2	52
Matungulu	31	10	41	30	11	41
Mwala	65	5	70	63	4	68
Yatta	50	11	61	51	10	60
TOTAL	322	66	388	331	59	390

Source: Ministry of Education Science & Technology, Machakos County

*Provisional

Table 12.11: Secondary School Enrolment by Class, Sex & Sub-County, 2014*

											Number
Class	Form 1		Form 2		Form 3		Form 4		Grand Total		
Sub-County	Boys	Girls	Boys	Girls	Boys	Girls	Boys	Girls	Boys	Girls	Total
Athi River	814	776	891	844	840	699	675	603	3,220	2,922	6,142
Kangundo	1,230	965	1,234	940	1,068	819	833	603	4,365	3,327	7,692
Kathiani	1,271	1,353	1,199	1,154	1,113	1,028	869	895	4,452	4,430	8,882
Machakos	3,098	2,809	2,905	2,632	2,527	2,409	2,178	2,107	10,708	9,957	20,665
Masinga	1,569	1,608	1,528	1,599	1,308	1,209	1,030	927	5,435	5,343	10,778
Matungulu	1,316	1,745	1,360	1,585	1,260	1,339	834	1,180	4,770	5,849	10,619
Mwala	2,510	2,660	2,332	2,584	2,029	2,116	1,822	1,754	8,693	9,114	17,807
Yatta	1,755	1,912	1,618	1,714	1,545	1,443	1,215	1,145	6,133	6,214	12,347
Total	13,563	13,828	13,067	13,052	11,690	11,062	9,456	9,214	47,776	47,156	94,932

Source: Ministry of Education Science & Technology

*Provisional

Table 12.12: Secondary Schools and Enrolment by Sex, 2014*

					Number
Type	Schools	Enrolment			
		Boys	Girls	Total	
Public	331	43,962	42,935	86,897	
Private	59	3,814	4,221	8,035	
Total	390	47,776	47,156	94,932	

Source: Ministry of Education, Science and Technology

*Provisional

Table 12.13: Secondary School Enrolments and Access Indicators, 2014*

Indicators	Males	Female	Total
Enrolment (Number)	47,776	47,156	94,932
Gross Enrollment Rates (GER) %	94.1	94.7	94.4
Net Enrollment Rates (NER) %	78.4	80.4	79.4

Source: Ministry of Education, Science and Technology

*Provisional

Table 12.14: Teachers in Public Secondary Schools by Sub-County, 2013–2014

Sub-County	2013			2014*		
	Male	Female	Total	Male	Female	Total
Athi River	67	31	98	50	62	112
Kangundo	121	111	232	122	112	234
Kathiani	123	91	214	135	107	242
Machakos	298	290	588	358	426	784
Masinga	178	87	265	196	94	290
Matungulu	178	175	353	182	180	362
Mwala	294	181	475	311	192	503
Yatta	199	119	318	220	143	363
TOTAL	1,458	1,085	2,543	1,574	1,316	2,890

Source: Teachers Service Commission, Machakos County

*Provisional

University and Middle Level College Education

Table 12.15: Student Enrolment in Public Technical Institutions by Sex, 2013-2014

NAME OF INSTITUTION	2013			2014		
	Male	Female	Total	Male	Female	Total
Machakos Blind tt	70	49	119	70	51	121
Katine TTI	53	19	72	79	24	103
TOTAL	123	68	191	149	75	224

Source: Ministry of Education Science & Technology, Machakos County

*Provisional

Table 12.16: Student Enrolment in Public Youth Polytechnics by Sub-County and Sex, 2013-2014

Sub-County	2013			2014*		
	Male	Female	Total	Male	Female	Total
Machakos	107	77	184	97	73	170
Athi river	92	63	155	76	66	142
Yatta	356	225	581	418	208	626
Kathiani	304	159	463	350	141	491
Mwala	257	178	435	320	224	544
Masinga	248	239	487	269	250	519
Matungulu	123	79	202	142	93	235
Kangundo	73	31	104	87	42	129
Total	1,560	1,051	2,611	1,759	1,097	2,856

Source: Department of Youth Affairs, Machakos County

*Provisional

Table 12.17: Enrollment at KMTC campuses, 2012 – 2014

	Number					
	2013			2014*		
Machakos Campus	Male	Female	Total	Male	Female	Total
Diploma in Nursing	41	59	100	33	69	103
Diploma in Laboratory	22	14	36	20	20	40
Diploma in Clinical Medicine	33	27	60	39	22	61
Manza Campus						
Diploma in Environmental Health Science	29	17	46	15	22	37
Diploma in Pharmacy	38	19	57	36	35	71
Diploma in Medical Imaging Sciences(X)	13	7	20	13	5	18

Source: Kmtc Machakos And Manza Campuses

*Provisional

Table 12.18: KMTC Lecturers by sex and campus, 2012-2014

Campus	2013			2014*		
	Male	Female	Total	Male	Female	Total
Machakos Campus	13	11	24	14	9	23
Manza Campus	10	3	13	10	4	14
Total	23	14	37	24	13	37

Source: KMTC MACHAKOS AND MANZA CAMPUSES

*Provisional

Table 12.19: Enrollment in Machakos Teachers Training College, 2012 – 2014*

TTC	2013			2014*		
	Male	Female	Total	Male	Female	Total
P1	537	509	1046	569	480	1049

Source: Machakos Teachers Training College

*Provisional

Table 12.20: University Enrollment, 2013/2014-2014/2015* Academic years

Degree Programmes	Number					
	2013			2014		
	GSSP			PSSP		
	F	M	TOTAL	F	M	TOTAL
Masters	-	-	-	13	21	34
Degree Programmes	545	1,015	1,560	116	152	268
TVET-Diplomas Courses	159	348	507	-	-	-
TVET-Certificate Courses	163	209	372	-	-	-
Diploma Courses	-	-	-	159	247	406
Certificate Courses	-	-	-	58	68	126
CPA	-	-	-	9	20	29
CATC	-	-	-	19	17	36

Source: Machakos University

*Provisional

Table 12.21: Scott Christian University Enrollment, 2013-2014

Course	2013			2014*		
	Male	Female	Total	Male	Female	Total
Certificate	94	8	102	68	50	118
Diploma	144	38	182	163	69	232
Bachelor	49	19	68	69	22	91
Masters	33	8	41	46	19	65
TOTAL	320	73	393	346	160	506

Source: Scott Christian University

*Provisional

Adult Education

Table 12.22: Adult Education Centres by Sub-County, 2013 – 2014

Sub-County	Number
	2014*
Athi River	13
Kangundo	41
Kathiani	13
Machakos	37
Masinga	14
Matungulu	25
Mwala	43
Yatta	23
Total	209

Source: Department Adult and Continuing Education, Machakos County

*Provisional

Table 12.23: Teachers involved in adult education by sex and Sub-county, 2013-2014

Sub - County	2013			2014*		
	Male	Female	Total	Male	Female	Total
Athi River	2	9	11	2	9	11
Kangundo	4	15	19	4	15	19
Kathiani	4	10	14	4	10	14
Machakos	13	23	36	13	23	36
Masinga	6	10	16	6	10	16
Matungulu	5	10	15	5	10	15
Mwala	4	26	30	4	26	30
Yatta	9	11	20	9	11	20
Total	47	114	161	47	114	161

Source: Department of Adult & Continuing Education, Machakos County

*Provisional

Table 12.24: Adult education basic literacy enrollment by sex and sub-county 2013 – 2014

Sub-County	2013			2014*		
	Male	Female	Total	Male	Female	Total
Athi River	113	95	208	40	120	160
Kangundo	136	1,018	1,154	41	379	420
Kathiani	99	441	540	12	134	146
Machakos	51	285	336	76	22	98
Masinga	15	154	169	109	490	599
Matungulu	25	418	443	47	404	451
Mwala	33	417	450	51	596	647
Yatta	61	530	591	61	570	631
Total	533	3,358	3,891	437	2,715	3,152

Source: Department of Adult & Continuing Education, Machakos County

*Provisional

Table 12.25: Adult education Enrollment in post literacy by sex and sub-county, 2013-2014

Sub-County	2013			2014*		
	Male	Female	Total	Male	Female	Total
Athi River	73	163	236	206	232	438
Kangundo	79	478	557	48	259	307
Kathiani	60	263	323	8	93	101
Machakos	98	466	564	123	611	734
Masinga	20	115	135	55	248	303
Matungulu	44	375	419	80	707	787
Mwala	63	581	644	50	463	513
Yatta	35	336	371	43	325	368
Total	472	2,777	3,249	613	2,938	3,551

Source: Department of Adult & Continuing Education, Machakos County

*Provisional

Table 12.26: Enrollment in NFE Programmes by sex, 2013-2014

	2013			2014*		
	Male	Female	Total	Male	Female	Total
Primary	41	18	59	42	37	79
Secondary	32	152	184	109	181	290
Vocational	14	10	24	19	18	37
Total	87	180	267	170	236	406

Source: Department of Adult & Continuing Education, Machakos County

*Provisional

Table 12.27: Enrollment in NFE Programmes by sex and sub-county, 2013-2014

Sub-County	2013			2014*		
	Male	Female	Total	Male	Female	Total
Athi River	8	16	24	60	88	148
Kangundo	6	25	31	21	23	44
Kathiani	2	6	8	3	6	9
Machakos	57	41	98	67	97	164
Masinga	3	34	37	0	0	0
Matungulu	1	56	57	11	15	26
Mwala	0	0	0	0	0	0
Yatta	10	2	12	8	7	15
Total	87	180	267	170	236	406

Source: Department of Adult & Continuing Education, Machakos County

*Provisional

Table 12.28: Adult education examination enrolment by sex and type of examination, 2013-2014

Adult Education Examination	2013			2014*		
	Male	Female	Total	Male	Female	Total
Proficiency Test(Basic & Post Literacy)	124	651	775	93	632	725
Kcse	44	58	102	10	44	54
Kcpe	36	18	54	7	8	15
Vocational	24	11	35	21	12	33
Total	228	738	966	131	696	827

Source: Department of Adult & Continuing Education, Machakos County

*Provisional

Table 12.29: Adult Education Proficiency Test Results by Sex and Sub-County, 2013 – 2014

Sub-County	Proficiency Test Results											
	2013						2014*					
	Number Sat			Number Passed			Number Sat			Number Passed		
	Male	Female	Total	Male	Female	Total	Male	Female	Total	Male	Female	Total
Athi River	11	29	40	11	29	40	15	34	49	14	34	48
Kangundo	9	77	86	9	75	84	21	122	143	19	103	122
Kathiani	4	25	29	4	23	27	4	45	49	4	45	49
Machakos	26	57	83	26	49	75	53	87	140	52	86	138
Masinga	8	81	89	7	75	82	6	70	76	6	69	75
Matungulu	4	138	142	4	103	107	6	76	82	6	73	79
Mwala	19	132	151	18	126	144	11	145	156	11	139	150
Yatta	12	93	105	6	79	85	8	72	80	8	71	79
Total	93	632	725	85	559	644	124	651	775	120	620	740

Source: Department of Adult & Continuing Education, Machakos County

*Provisional

Public Health

This section provides statistics on health facilities by type and ownership, hospital beds and cots, outpatient morbidity for persons who are under five years old and those who are aged five years and above, registered medical personnel, NHIF and medical students.

Notes and Definitions

Kenya's health system is broadly categorized into six levels of care, namely, Level 1 comprising of the community and outreach level of care, Level 2 representing the dispensaries, Level 3 of health centers and clinics, Level 4 of the district hospitals, Level 5 of the County hospitals, and Level 6 of tertiary national referral hospitals

Health Facility: This is a defined a health service delivery structure from where services are provided e.g. Outpatient, pharmacy, laboratory. Government facilities are the ones which are gazetted and Non-Government facilities are registered with the regulator.

Level 1 – Community Health Unit: This is a health service delivery structure within a defined geographical area covering a population of approximately 5,000 people.

Level 2 – Dispensaries: Refers to the lowest point of contact with the public. These are run and managed by enrolled and registered nurses who are supervised by the nursing officer at the respective health centre.

Level 3 - Health Centres: They have a clinical officer as in-charge and provide comprehensive primary care and mainly focus on preventive care such as childhood vaccination. They are medium-sized units which cater for a population of about 80,000 people.

Level 4 – Sub County hospitals: Are hospitals which are the coordinating and referral centre for the smaller units. They usually have the resources to provide comprehensive medical and surgical services. They are managed by medical superintendents.

Level 5 - County hospitals. These are regional centres which provide specialised care including intensive care and life support and specialist consultations. These are referral points for the sub county hospitals

Level 6 - National referral hospitals: Refers to National referral hospitals offering very specialized services. They are Kenyatta National Hospital, Moi Teaching and Referral Hospital, Mathare Mental Hospital and Nairobi Spinal Injury.

Table 12.1: Health Facilities by Ownership and Sub County, 2014*

																	Number
	Hospitals				Health Centres				Dispensaries				Clinics				
	Government	FBO	Private	NGO	Government	FBO	Private	NGO	Government	FBO	Private	NGO	Government	FBO	Private	NGO	
Machakos	1	1	1	-	3	-	-	-	17	-	-	-	-	3	7	-	
Kangundo	1	-	-	-	2	1	-	-	7	-	-	-	-	-	3	-	
Yatta	1	-	-	-	1	1	-	-	16	3	-	-	-	-	3	-	
Mwala	1	-	-	-	8	-	-	-	15	5	-	-	-	-	13	-	
Kathiani	1	-	-	-	3	-	-	-	12	-	-	-	-	4	2	-	
Masinga	-	-	-	-	7	-	-	-	24	2	-	-	-	-	2	-	
Matungulu	-	-	-	-	5	-	-	-	14	-	-	-	-	-	9	-	
Athi river	-	1	1	-	3	-	-	-	4	-	-	-	-	2	23	-	
Total	5	2	2	-	32	2	-	-	109	10	-	-	-	9	62	-	

Source: Department of Health and Emergency Services, County Government of Machakos

*Provisional

Table 12.2: Hospital Beds and Cots by Sub County

Sub- County	Number	
	2014*	
	Beds	Cots
Machakos	828	91
Athi river	247	36
Kathiani	206	8
Mwala	50	13
Kangundo	208	42
Matungulu	60	5
Masinga	112	98
Yatta	151	21
Total	1,862	314

Source: Ministry of Health, County Government of Machakos

*Provisional

Table 12.3: Outpatient morbidity for patients below 5 years of age by Sub-County, 2014*

Diseases (New Cases only)	Number								Total
	Athi River	Kangundo	Kathiani	Machakos	Masinga	Matungulu	Mwala	Yatta	
Accidents - Fractures, injuries, etc.	705	341	764	1,208	692	506	751	606	5,573
All Others diseases	10,054	2,833	8,924	16,483	6,872	8,259	10,367	4,679	68,471
Aneamia	60	12	16	780	54	21	390	22	1,355
Bilharzia	7	4	9	47	31	-	12	-	110
Bites - Animal, Snake, etc	23	46	206	225	146	84	162	187	1,079
Brucellosis	-	-	-	1	-	-	11	-	12
Burns	393	92	209	419	191	343	233	191	2,071
Chicken Pox	342	41	125	173	245	175	347	220	1,668
Cholera	-	-	-	-	-	-	-	-	-
Clinical Malaria	612	511	572	1,454	412	3,313	3,931	1,511	12,316
Confirmed Malaria	772	35	61	222	102	962	259	718	3,131
Congenital Anomalies	15	13	10	123	8	5	19	4	197
Dental Disorders	111	89	85	645	144	130	106	98	1,408
Diabetes	52	-	5	5	3	6	2	4	77
Diarrhoea	7,233	3,176	4,932	6,079	5,370	4,285	6,356	5,552	42,983
Dis. of the skin (incl. wounds)	3,326	1,996	4,469	5,416	5,013	4,006	6,266	4,363	34,855
Dracunculosis	-	-	-	-	-	-	-	-	-
Dysentery	22	23	25	25	49	36	31	36	247
Ear Infections	789	602	797	1,395	829	898	1,114	701	7,125
Epilepsy	7	6	11	21	11	8	1	17	82
Eye Infections	1,295	679	1,607	2,414	1,289	1,508	1,616	1,661	12,069
Hypertension	-	-	-	-	-	-	-	-	-
Infectious Hepatitis	-	-	-	3	-	-	5	-	8
Intestinal worms	813	673	735	1,173	1,306	1,739	1,881	1,643	9,963
Malnutrition	67	50	51	265	48	12	73	143	709
Measles	34	-	1	9	1	1	2	-	48
Meningococcal Meningitis	3	-	-	-	-	-	-	-	3
Mental Disorders	13	4	-	45	25	8	55	13	163
Mumps	216	9	39	107	97	83	135	37	723
Neonatal Tetanus	2	-	-	-	-	-	2	-	4
New AIDS Cases	4	2	2	4	9	4	5	4	34
Other Dis. of Respiratory System	27,439	16,942	27,115	34,957	23,497	23,988	72,202	24,899	251,039
Plague	-	-	-	-	-	-	-	-	-
Pneumonia	3,389	873	600	2,241	1,391	1,619	1,665	501	12,279
Poisoning	75	22	32	53	46	49	51	38	366
Poliomyelitis (AFP)	-	-	-	-	-	-	-	-	-
Sexual Assault	11	3	8	109	46	22	17	10	226
Tuberculosis	13	1	-	4	-	-	4	1	23
Typhoid fever	58	-	2	13	37	3	13	29	155
Urinary Tract Infection	505	272	231	682	293	285	364	125	2,757
Viral Haemorrhagic Fever	-	-	-	-	-	-	-	-	-
Yellow Fever	-	-	-	5	-	-	-	-	5
First Attendances	34,291	20,647	28,040	32,829	28,684	30,942	43,383	29,846	248,662
Re-attendances	24,094	7,113	16,160	25,111	13,938	15,189	21,057	15,354	138,016
Referrals in	164	109	13	105	73	72	450	106	1,092
Referrals out	185	40	336	237	145	167	507	118	1,735

Source: Department of Health and Emergency Services, Machakos County

*Provisional

Table 12.4: Outpatient morbidity for patients above 5 years of age by Sub-County, 2014*

Number									
Diseases (New cases only)	Athi river	Kangundo	Kathiani	Machakos	Masinga	Matungulu	Mwala	Yatta	Total
Abortion	807	71	135	620	115	56	80	167	2,051
Accidents - Fractures, injuries, etc.	6,853	2,204	4,221	10,047	3,825	2,685	8,413	6,610	44,858
All Others diseases	57,636	19,287	33,295	75,909	33,215	25,463	49,286	31,712	325,803
Aneamia	516	233	272	1,066	394	148	444	481	3,554
Bilharzia	25	19	89	48	67	39	101	20	408
Bites - Animal, Snake, etc	218	417	827	1,318	738	510	1,071	1,221	6,320
Brucellosis	301	105	890	479	46	99	1,026	383	3,329
Burns	393	184	248	765	317	402	410	289	3,008
Chicken Pox	361	64	153	259	282	181	527	330	2,157
Cholera	-	-	-	-	-	-	-	-	-
Clinical Malaria	1,930	1,997	1,694	4,442	760	8,371	9,153	2,942	31,289
Confirmed Malaria	1,822	109	340	272	429	2,158	683	2,630	8,443
Dental Disorders	1,278	2,112	851	2,583	1,473	795	1,104	3,127	13,323
Diabetes	1,322	571	736	2,775	360	365	1,211	499	7,839
Diarrhoea	6,916	3,167	5,920	9,576	5,975	5,044	7,986	7,785	52,369
Dis. of Puerperium & Childbirth	133	12	81	700	131	153	221	81	1,512
Dis. of the skin (incl. wounds)	7,689	8,609	14,118	20,440	16,435	13,100	25,492	17,331	123,214
Dracunculosis	-	-	-	-	-	-	-	-	-
Dysentery	216	26	94	205	96	89	115	118	959
Ear Infections	902	1,656	1,229	3,649	1,485	1,155	1,920	1,697	13,693
Epilepsy	45	17	159	244	183	99	47	162	956
Eye Infections	1,546	1,937	2,526	5,153	2,602	2,001	4,056	3,378	23,199
Hypertension	3,090	2,226	2,567	8,425	1,897	2,273	5,855	2,255	28,588
Infectious Hepatitis	27	-	5	41	45	-	1	-	119
Malaria in pregnancy	119	40	4	83	44	179	68	27	564
Malnutrition	86	32	27	34	163	2	9	14	367
Measles	13	-	4	26	4	1	10	-	58
Meningococcal Meningitis	1	-	-	28	-	1	-	-	30
Mental Disorders	131	131	474	576	260	143	138	172	2,025
New AIDS Cases	199	25	79	514	131	51	128	70	1,197
Other Dis. of Respiratory System	35,517	23,623	43,401	69,643	40,595	38,358	63,944	50,075	365,156
Plague	-	-	-	-	-	-	-	-	-
Pneumonia	5,642	1,689	1,068	3,861	2,119	3,343	3,067	1,614	22,403
Poisoning	357	51	94	1,528	182	64	204	134	2,614
Poliomyelitis (AFP)	-	-	-	-	-	2,782	-	-	2,782
Rheumatism, Joint pains etc.	2,551	1,812	5,627	11,680	8,038	26	6,208	7,111	43,053
Sexual Assault	51	35	64	130	171	757	53	87	1,348
Sexually Transmitted Infections	2,426	228	445	1,923	686	1	592	553	6,854
Tetanus	1	1	-	8	5	38	4	-	57
Tuberculosis	373	114	29	430	46	573	53	24	1,642
Typhoid fever	2,745	198	69	562	1,322	5,780	1,508	1,461	13,645
Urinary Tract Infection	10,916	3,889	4,128	11,806	4,720	-	11,152	5,645	52,256
Viral Haemorrhagic Fever	-	-	-	-	-	-	-	-	-
Yellow Fever	-	-	-	-	-	-	-	-	-
Total New cases	155,154	76,891	125,963	251,848	129,356	117,285	206,340	150,205	1,213,042
First Attendances	105,557	63,923	81,285	136,842	88,895	77,351	152,677	108,876	815,406
Re-attendances	76,342	17,635	36,444	91,640	35,753	29,240	56,518	42,115	385,687
Referrals in	283	81	27	803	587	43	170	63	2,057
Referrals out	450	358	547	1,196	847	637	695	812	5,542

Source: Department of Health and Emergency Services, County Government of Machakos

*Provisional

Table 12.5: Registered Medical Personnel per Cadre, 2013-2014

Type of Personnel	2013				2014*			
	Male	Female	Total	No. Per 100,000 Population	Male	Female	Total	No. Per 100,000 Population
Doctors/ Medical Officers.....	37	40	77	6.7	37	42	79	6.8
Dentists.....	6	8	14	1.2	6	8	14	1.2
Dental Technologists.....	1	3	4	0.3	1	3	4	0.3
Registered Clinical Officers (RCO).....	34	50	84	7.3	44	58	102	8.7
Pharmacists.....	12	11	23	2.0	12	11	23	2.0
Pharmaceutical Technologists.....	7	7	14	1.2	7	7	14	1.2
Nurses (BSc).....	50	61	111	9.6	50	61	111	9.5
Registered Nurses.....	51	330	381	33.0	65	334	399	34.2
Enrolled Nurses.....	41	150	191	16.5	41	150	191	16.4
Public Health officers.....	43	26	69	6.0	43	26	69	5.9
Public Health Technicians.....	43	12	55	4.8	43	12	55	4.7
Occupational Therapists.....	9	5	14	1.2	9	5	14	1.2
Physiotherapists.....	14	10	24	2.1	14	10	24	2.1
Orthopedic.....	4	1	5	0.4	4	1	5	0.4
Medical Social Workers.....	1	2	3	0.3	1	2	3	0.3
Plaster Technicians.....	2	8	10	0.9	2	8	10	0.9
Laboratory Technologist.....	29	29	58	5.0	29	29	58	5.0
Health & Record Information officers.....	5	6	11	1.0	5	6	11	0.9
Health & Record Information Technicians..	4	15	19	1.6	4	15	19	1.6
Nutritionists.....	4	14	18	1.6	4	14	18	1.5
Radigraphers.....	10	3	13	1.1	10	3	13	1.1
Biochemists.....	-	-	-	-	-	-	-	-
Total.....	407	791	1,198		431	805	1,236	

Source: Department of Health and Emergency Services, County Government of Machakos

*Provisional

Public Finance

This section provides details of the County government's revenue and expenditure. This includes funds transferred from the county revenue fund to the county government, CDF allocation by constituency, and CDF beneficiaries in schools and colleges.

Notes and Definitions

Equalization Funds: These are Funds established under Article 204 of the constitution in which one and a half per cent of all the revenue collected by the national government each year calculated on the basis of the most recent audited accounts of revenue received, as approved by the National Assembly is paid.

Table 13.1: National Government allocation, 2013 – 2015*

	KSh Million	
	2013/14	2014/15*
Equitable Share	4,950.62	5,905.80
Conditional Grant	523.08	459.90
Annual Local Revenue	1,175.23	2,533.48
Balance B/F Revoted in the Budget	77.44	-
Total Revenue	6,726.37	8,899.18

Source: The National Treasury and Office of the Controller of Budget

Table 13.2: National Government Allocation 2013 – 2014

	KSh	
Funds	2013/2014	2014/2015*
Allocated Funds	5,059.15	6,262.71
Equalization funds (for marginalized Counties)	-	-
Total	5,059.15	6,262.71

Source: Department of Finance and Revenue, Machakos County

*Provisional

Table 13.3: Approved County Budget and expenditure FY 2013/14**KSh Million**

Ministry	Approved Budget FY 2013/14*		Total Appropriated Budget FY2013/14	Expenditure FY 2013/14*		Total Expenditure FY 2013/14
	Recurrent	Development		Recurrent	Development	
County Executive	438.97	106.50	545.47	402.53	94.62	497.15
Finance and Revenue Management	90.45	52.62	143.07	59.61	22.76	82.36
Public Service , ICT and Labour	1,775.90	306.07	2,081.97	1,726.66	134.58	1,861.24
County Image	26.85	62.89	89.73	20.27	24.97	45.25
Decentralized Units Urban Areas and Municipalities	275.39	301.72	577.11	274.27	291.89	566.16
Education, Youth and Social Services	30.99	257.36	288.35	23.26	154.18	177.45
Health and Emergency Services	386.09	433.15	819.24	128.86	216.96	345.82
Lands, Energy, Environment and Urban Development	19.30	310.24	329.54	9.54	198.06	207.59
Tourism ,Culture and Sports	46.04	141.91	187.95	28.03	60.08	88.12
Transport, Roads Public Works and Housing	73.69	1,658.45	1,732.15	31.48	803.60	835.08
Agriculture, Livestock, Fisheries and Cooperative Development	75.29	273.92	349.21	24.69	213.01	237.70
Trade , Economic Planning and Industrialization	12.76	33.72	46.48	9.51	8.39	17.90
Water, Irrigation and Sanitation	15.61	557.73	573.34	13.98	315.69	329.67
County Assembly	470.44	223.00	693.44	522.08	152.65	674.73
Total	3,737.77	4,719.28	8,457.06	3,274.78	2,691.45	5,966.22

Source: Department of Finance & Revenue Management, Machakos County

*Provisional

Table 13.4: Approved County Budget and expenditure FY 2014/15

KSh Million

Ministry	Approved Budget FY 2014/15*		Total Appropriated Budget FY2014/15	Expenditure FY 2014/15*		Total Expenditure FY 2014/15
	Recurrent	Development		Recurrent	Development	
County Executive	396.03	70.00	466.03	365.64	36.95	402.59
Finance and Revenue Management	235.45	33.38	268.82	225.61	12.93	238.54
Public Service , ICT and Labour	146.78	174.50	321.28	118.30	75.92	194.22
Public Service Board	56.37	25.42	81.78	71.58	9.45	81.03
Decentralized Units Urban Areas and Municipalities	636.03	75.95	711.99	776.28	40.87	817.15
Education, Youth and Social Services	339.19	185.93	525.12	173.18	92.61	265.78
Health and Emergency Services	1,708.57	601.83	2,310.40	1,730.87	193.76	1,924.63
Lands, Energy, Environment and Urban Development	51.14	293.66	344.79	75.90	100.97	176.86
Tourism ,Culture and Sports	61.26	154.79	216.05	120.59	46.30	166.89
Transport, Roads Public Works and Housing	158.49	1,366.42	1,524.91	240.35	983.98	1,224.34
Agriculture, Livestock, Fisheries and Cooperative Development	297.61	177.87	475.48	356.21	37.56	393.77
Trade , Economic Planning and Industrialization	49.03	219.84	268.87	65.51	39.38	104.89
Water, Irrigation and Sanitation	166.35	790.14	956.49	222.63	281.54	504.16
County Assembly	608.83	181.17	790.00	539.26	81.43	620.69
Total	4,911.15	4,350.88	9,262.03	5,057.56	2,033.66	7,115.55

Source: Department of Finance & Revenue Management, Machakos County

*Provisional

Table 13.5 CDF Allocations by Constituency 2013/14 – 2014/15*

KSh Million

CONSTITUENCY	2013/14	2014/15*
Masinga	81.24	117.13
Yatta	81.96	118.21
Kangundo	72.10	103.28
Matungulu	76.87	110.51
Kathiani	68.12	97.25
Mavoko	68.08	97.19
Machakos Town	78.78	113.40
Mwala	79.31	114.20
TOTAL	606.46	871.17

Source: Constituency Development Fund offices, Machakos County

*Provisional

Table 13.6: CDF Bursary Beneficiaries in Secondary and Colleges, 2013-2014

Constituency	Secondary						University/Middle Level Colleges						2013/2014	2014/2015*
	2013/2014			2014/2015*			2013/2014			2014/2015*			Total Bursary	Total Bursary
	Male	Female	Total	Male	Female	Total	Male	Female	Total	Male	Female	Total	(KSh)	(KSh)
Yatta
Kangundo	468	750	1218	1261	1500	2761	136	149	285	170	188	358	2,600,000	5,900,000
Kathiani
Machakos
Masinga	533	599	1132	-	332	206	538	-	5,155,000	..
Matungulu	2,000	1,820	3820	1,900	1,870	3770	550	233	783	820	855	1675	17,500,000	18,000,000
Mavoko	-	786	710	1496	-	-	-	245	180	425	..	12,267,147
Mwala	737	806	1543	-	280	182	462	434	274	708	6,907,500	3,894,000

Source: Constituency Development Fund

Table 13.7: County Government Bursary in Secondary and Colleges by Constituency, 2013-2014

Constituency	KSh Million	
	2013	2014*
Kangundo	3.69	3.99
Kathiani	3.70	4.00
Machakos	6.11	7.00
Masinga	4.14	5.00
Matungulu	4.33	5.15
Mavoko	3.41	4.00
Mwala	5.00	6.00
Yatta	4.48	5.47
Total	34.86	40.61

Source: Department of Education, Machakos County

*Provisional

Money and Banking

This section presents data on Financial Institutions.

Notes and Definitions

Banks: These are organizations where people and businesses can invest or borrow money and exchange foreign currency.

Table 14.1: Banks by Sub-County, 2014

Sub-County	Number	
	Banks	
	2013	2014*
Machakos	11	13
Athi River	7	8
Kathiani	-	-
Mwala	2	2
Yatta	4	4
Masinga	-	-
Kangundo	-	-
Matungulu	5	5
Total	29	32

Source: Central Bank of Kenya, Machakos County

*Provisional

Labour

This section provides data on employment

Table 15.1: Wage Employment by Sector, 2013-2014

Sector	Number	
	2013	2014*
National Government at counties	4,531	2,814
County government	2,724	2,800
Total	7,255	5,614

Source: Kenya National Bureau of Statistics

**Provisional*

Governance

This section presents data on crimes reported to Police, cases handled by Law Courts, persons held in prison and those serving out of prison sentences. In addition, the section gives information on national identity cards and registered voters

Notes and Definitions

Duplicate ID: Refers to an identity card (ID) issued for replacement of lost, misplaced or damaged ID card.

Order and Administration of Lawful Authority: These include treason, incitement to mutiny, aiding civil disobedience

Injurious to Public: Includes stealing government property, stealing by person in public service, stealing from state corporations

Against Person: Includes assault, grievous harm, murder etc

Related to Property: Includes theft, robbery with violence, arson

Attempts and Conspiracies: Includes attempts to commit offence, neglect to prevent offences, conspiracy to commit offences

Employment Offences: Includes employment of aliens without permit

Drugs related: Includes possession, manufacture, trafficking etc of any quantity of illegal substances.

Various Cases: Includes by – laws under County Government, Traffic Act etc

Prison personnel: Only uniformed personnel and excludes all the other staff

Registration of Persons

Table 16.1: ID applicants by sex and Sub-county, 2013 – 2014

Sub-County	2013			2014*			Number
	Male	Female	Total	Male	Female	Total	
Machakos	5,849	5,847	11,696	5,515	4,399	9,914	
Kathiani	1,777	2,085	3,862	1,446	1,532	2,978	
Mwala	2,608	3,134	5,742	2,664	2,366	5,030	
Kangundo	3,191	3,867	7,058	2,853	3,205	6,058	
Matungulu	3,492	3,558	7,050	2,383	2,382	4,765	
Athi River	3,060	2,655	5,715	3,477	2,450	5,927	
Yatta	3,046	3,092	6,138	3,180	3,122	6,302	
Masinga	1,518	1,846	3,364	1,338	1,371	2,709	
Total	24,541	26,084	50,625	22,856	20,827	43,683	

Source: National Registration Bureau, Machakos County

*Provisional

Table 16.2: ID Cards Received by Sex and Sub-County, 2013-2014

Sub-County	2013			2014*			Number
	Male	Female	Total	Male	Female	Total	
Machakos	4,872	4,045	8,917	5,071	4,035	9,106	
Kathiani	2,541	2,937	5,478	1,374	1,511	2,885	
Mwala	3,521	4,013	7,534	2,227	2,088	4,315	
Kangundo	3,671	4,026	7,697	2,226	2,017	4,243	
Matungulu	3,531	3,114	6,645	2,209	2,090	4,299	
Athi River	3,251	2,875	6,126	2,257	1,860	4,117	
Yatta	3,705	3,815	7,520	2,639	2,699	5,338	
Masinga	1,962	2,278	4,240	1,016	995	2,011	
Total	27,054	27,103	54,157	19,019	17,295	36,314	

Source: National Registration Bureau, Machakos County

*Provisional

Table 16.3: ID Cards Collected by Sex and Sub-County, 2013-2014

Sub-County	2013			2014*			Number
	Male	Female	Total	Male	Female	Total	
Machakos	4,246	3,939	8,185	4,706	3,841	8,547	
Kathiani	1,811	2,295	4,106	1,369	1,513	2,882	
Mwala	2,813	3,258	6,071	2,214	2,022	4,236	
Kangundo	2,798	3,864	6,662	2,043	2,121	4,164	
Matungulu	2,283	2,316	4,599	2,869	2,581	5,450	
Athi River	2,925	2,829	5,754	2,083	2,549	4,632	
Yatta	4,258	4,562	8,820	2,750	2,733	5,483	
Masinga	1,283	2,120	3,403	1,068	1,081	2,149	
Total	22,417	25,183	47,600	19,102	18,441	37,543	

Source: National Registration Bureau, Machakos County

*Provisional

Table 16.4: Duplicate ID Cards by Sex and Sub-County, 2013-2014

Sub-County	2013			2014*		
	Male	Female	Total	Male	Female	Total
Machakos	2,252	1,433	3,685	2,477	1,525	4,002
Kathiani	813	480	1,293	354	232	586
Mwala	1,340	973	2,313	607	399	1,006
Kangundo	1,590	1,003	2,593	226	199	425
Matungulu	1,285	603	1,888	839	802	1,641
Athi River	1,931	1,038	2,969	2,271	1,032	3,303
Yatta	1,532	690	2,222	964	686	1,650
Masinga	755	234	989	226	199	425
Total	11,498	6,454	17,952	7,964	5,074	13,038

Source: National Registration Bureau, Machakos County

*Provisional

Kenya Police Service

Table 16.5: Traffic Accidents, 2013 – 2014

Description	Number	
	2013	2014*
Total Number of Accidents Reported	203	232
Persons Killed and Injured		
Killed	82	156
Seriously Injured	95	162
Slightly Injured	286	339
Total	463	657
Vehicles Primarily Responsible		
Motor Cars	45	38
Lorries,Buses and Taxis	69	71
Motor Cycles	44	36
Pedal Cycles	7	2
Animals/Hand Carts	10	6
Matatus	33	24
Others	16	58
Persons Primarily Responsible		
Driver (Incl Motor cyclists)	88	100
Pedestrians	15	25
Pedal Cyclists	7	1
Passengers	4	10
Other Causes	29	96
Times of Accidents Occurance		
Day	78	88
Night	125	144

Source: Kenya Police Service, Machakos County

*Provisional

Table 16.6: Persons Reported to Police to have Committed Offences Against Morality and Other Offences against Persons by Sex, 2012-2014.

	Number					
	2013			2014*		
Against morality	Male	Female	Total	Male	Female	Total
Rape	25	8	33	27	-	27
Defilement	108	-	108	102	-	102
Incest	10	-	10	16	2	18
Unnatural offences sodomy	3	-	3	7	-	7
Bestiality	1	-	1	5	-	5
Indecent assault	-	-	-	6	-	6
Abduction	-	-	-	-	-	-
Bigamy	-	-	-	-	-	-
Other Offences against persons						
Assault	241	64	305	323	87	410
Creating disturbance	163	31	194	239	31	270
Affray(scuffle)	4	-	4	2	-	2

Source: Kenya Police Service, Machakos County

*Provisional

Judiciary

Table 16.7: Distribution of Judicial officers by Court Station 2014

Court Station	Number
	Judicial Officers
Machakos Law Courts	8
Kithimani Law Courts	2
Kangundo Law Courts	2
Mavoko Law Courts	3

Source: Machakos Law Courts

*Provisional

Table 16.8: Cases Filed 2013-2014(High Court)

Type Of Case	Number	
	2013	2014*
Civil Appeals	251	266
Misc. Applications	302	210
Constitutional Petitions	4	-
Ordinary Civil	67	63
Divorce	8	1
Adoption	34	20
P & A / Succession	1,009	1,130
Murder	62	74
Criminal Appeals	338	245
Criminal Revisions	622	367
Environment And Land	114	238
Electral Petitions	13	34
Criminal Misc. Applications	228	221
Murder Cases Decided	-	-
Total	3,052	2,869

Source: High Court of Kenya, Machakos County

*Provisional

Table 16.9: Cases Filed 2013-2014 (Chief Magistrate Court)

Type Of Case	Number	
	2013	2014*
Civil	1,176	1,006
Civil Misc. Applications	70	47
Children	46	45
Traffic	1,230	1,710
Divorce	14	22
Criminal	1,565	2,038
Criminal Misc. Applications	69	82
Inquest	10	8
Protection And Discipline	97	22
Electral Petitions	3	-
Total	4,280	4,980

Source: High Court of Kenya, Machakos County

*Provisional

Prisons

Table 16.10: Persons Committed for imprisonment by duration, 2011 – 2014

	Number	
	2013	2014*
Penal Imprisonment	3,179	2,443
Three years and over	1,495	946
18 Months-Under Three Years	104	93
One year -18 Months	131	128
6 Months - 1 year	167	135
3 Months -6 Months	382	301
1 Month - 3 Months	378	401
Under 1 Month	141	273
Death Sentence	381	166
Total	6,358	4,886
Daily Average In Prison	810	869
Deaths(Excluding Executions)

Source: Kenya Prisons services, Machakos County

*Provisional

Table 16.11: Penal Code Cases, 2010-2014

Category Of Offences	Number	
	2013	2014*
Homicide	90	108
Offences Against Morality	78	65
Other Offences Against Persons	129	97
Robbery	87	124
Breakings	126	56
Theft Of Stock	62	32
Stealing	96	43
Theft By Servant	44	58
Vehicles And Other Thefts	52	42
Dangerous Drugs	140	185
Traffic Offences	126	188
Criminal Damages	18	23
Economic Crimes	29	50
Corruption	56	24
Offences Involving Police Officers	4	3
Offences Involving Tourists	-	-
Other Penal Codeoffences	191	129
Total	1,328	1,227

Source: Kenya Prison services, Machakos County

*Provisional

Table 16.12: Convicted Prisoners by type of offence, 2011-2014

Offence	Number	
	2013	2014*
Order & administration of lawful authority, Penal Code Section 41-126	221	135
Injuries to Public, Penal code Section 127-197	72	97
Against person, Penal code Section 198-261	65	108
Related to Property, Penal code section 262-340	257	119
Attempts & Conspiracies, Penal Code Section 389-399	17	75
Employment Act	-	-
Liquor Act	228	289
Registration of persons Act	1	18
Opietes	108	185
Emergency Regulations	-	-
Graduate Persons Tax Act	-	50
Forgery, Coining and Counterfeit, Penal Code Section 341-383	15	31
Various cases	344	120
Total	1,328	1,227

Source: Kenya Prison service, Machakos County

*Provisional

Table 16.13: Convicted Prison Population by age, 2011–2014

Ages	Number	
	2013	2014*
Under 18	-	-
18-20	152	242
21-25	377	396
26-50	684	398
50+	115	191
Total	1,328	1,227

Source: Kenya Prison Services, Machakos County

*Provisional

Table 16.14: Prison Personnel by Sex, 2013-2014

Personnel	Number	
	2013	2014*
Male	214	209
Female	13	11
Total	227	220

Source: Kenya Prison Services, Machakos County

*Provisional

Probation

Table 16.15: Probation Personnel and Offenders by Sex, 2013-2014

Personnel	2013			2014*			Number
	Male	Female	Total	Male	Female	Total	
Probation officers	10	15	25	11	16		27
Offenders							
Offenders serving probation	21	5	26	33	2		35
Offenders serving community service	100	18	118	999	110		1,109
Offenders serving aftercare	12	-	12	12	-		12

Source: Probation Department, Machakos County

*Provisional

Table 16.16: Prisoners Serving Probation Orders by sex and Type of Offence, 2013-2014

Type of Offence	2013					2014*					Number
	Adult	Juv	Adult	Juv	Total	Adult	Juv	Adult	Juv	Total	
Murder (including attempt)	-	-	-	-	-	-	-	1	-	1	
Manslaughter	-	-	-	-	-	2	-	1	-	3	
Rape (including attempt)	-	-	-	-	-	-	-	-	-	-	
Assault	4	-	-	-	4	4	1	8	-	49	
Other offences against the person	-	-	-	-	-	39	-	2	-	59	
Robbery and allied offences	-	-	-	-	-	-	-	-	-	-	
Breakings	1	-	-	-	1	8	3	-	-	11	
Theft of stock	-	-	-	-	-	5	-	-	-	5	
General stealing	3	-	-	-	3	34	15	4	1	54	
Theft of motor vehicle	1	-	-	-	1	1	-	-	-	1	
Theft of motor vehicle parts	-	-	-	-	-	1	-	-	-	1	
Theft from motor vehicles	-	-	-	-	-	-	-	-	-	-	
Theft of bicycle	-	-	-	-	-	-	1	-	-	1	
Theft by servants	1	-	2	1	4	19	1	6	2	28	
Dangerous drugs	-	-	-	-	-	19	2	3	1	25	
Handling stolen property	-	-	-	-	-	5	2	-	-	7	
Corruption	-	-	-	-	-	-	-	-	-	-	
Causing death by dangerous driving	-	-	-	-	-	-	-	-	-	-	
Other offences against property	9	-	2	-	11	33	-	2	-	35	
All other penal code	1	1	-	-	2	57	2	7	-	66	
Total	2	1	4	1	26	263	27	52	4	346	

Source: Probation Department, Machakos County

*Provisional

Table 16.17: Prisoners Serving Community Service Order by sex and Type of Offence, 2013 – 2014

						Number				
	2013					2014*				
Type of Cases Reported	Male		Female		Total	Male		Female		Total
	Adult	Juv	Adult	Juv		Adult	Juv	Adult	Juv	
Murder (including attempt)	-	-	-	-	-	-	-	-	-	-
Manslaughter	-	-	-	-	-	-	-	-	-	-
Rape (including attempt)	-	-	-	-	-	-	-	-	-	-
Assault	-	-	-	-	-	8	-	2	-	1-
Other offences against the person	-	-	-	-	-	26	-	4	-	3-
Robbery and allied offences	-	-	-	-	-	-	-	-	-	-
Breakings	3	-	-	-	3	14	-	-	-	14
Theft of farm produce	17	-	1	..	18
Theft of stock	8	-	-	-	8	1	-	-	-	1
General stealing	2	-	-	-	2	3-	-	-	-	3-
Theft of motor vehicle	-	-	-	-	-	-	-	-	-	-
Theft of motor vehicle parts	-	-	-	-	-	-	-	-	-	-
Theft from motor vehicles	-	-	-	-	-	-	-	-	-	-
Theft of bicycle	-	-	-	-	-	-	-	-	-	-
Theft by servants	-	-	-	-	-	4	-	-	-	4
Dangerous drugs	2	-	-	-	2	22	-	3	-	25
Handling stolen property	-	-	-	-	-	2	-	-	-	2
Corruption	-	-	-	-	-	-	-	-	-	-
Causing death by dangerous driving	-	-	-	-	-	-	-	-	-	-
Other offences against property	-	-	-	-	-	1-	-	1	-	11
All other penal code	85	-	18	-	-	865	-	99	..	964

Source: Probation Department, Machakos County

*Provisional

Table 16.18: Prisoners Serving After Care services by sex and Type of Offence, 2013 – 2014

Type of Cases Reported	2013					2014*				
	Male		Female		Total	Male		Female		Total
	Adult	Juv	Adult	Juv		Adult	Juv	Adult	Juv	
Murder (including attempt)	-	-	-	-	-	-	-	-	-	-
Manslaughter	-	-	-	-	-	-	-	-	-	-
Rape (including attempt)	2	-	-	-	2	-	3	-	-	3
Assault	-	-	-	-	-	-	-	-	-	-
Other offences against the person	-	-	-	-	-	-	-	-	-	-
Robbery and allied offences	-	-	-	-	-	-	1	-	-	1
Breakings	-	-	-	-	-	-	3	-	-	3
Theft of stock	-	1	-	-	1	-	-	-	-	-
Theft of farm produce	-	-	-	-	-	-	2	-	-	2
General stealing	7	-	-	-	7	-	1	-	-	1
Theft of motor vehicle	-	-	-	-	-	-	-	-	-	-
Theft of motor vehicle parts	-	-	-	-	-	-	-	-	-	-
Theft from motor vehicles	-	-	-	-	-	-	-	-	-	-
Theft of bicycle	-	-	-	-	-	-	-	-	-	-
Theft by servants	-	-	-	-	-	-	-	-	-	-
Dangerous drugs	-	-	-	-	-	-	-	-	-	-
Handling stolen property	-	-	-	-	-	-	-	-	-	-
Corruption	-	-	-	-	-	-	-	-	-	-
Causing death by dangerous driving	-	-	-	-	-	-	-	-	-	-
Other offences against property	-	-	-	-	-	-	-	-	-	-
All other penal code	2	-	-	-	2	1	1	-	-	2
Total	11	1	-	-	12	1	11	-	-	12

Source: Probation Department, Machakos County

*Provisional

Table 16.19: Probation staff by sex, 2013-2014

Personnel Category	2013			2014*		
	Male	Female	Total	Male	Female	Total
Probation officers	7	12	19	8	13	21
Clerical officers	2	1	3	2	1	3
Assistant office administrator 1	-	1	1	-	1	1
Support staff	1	1	2	1	1	2
Total	10	15	25	11	16	27

Source: Probation Department, Machakos County

*Provisional

Social Services

This section presents information on registered women groups, youth groups and funds disbursement to the vulnerable groups such as the elderly, persons with disability and orphans and vulnerable children.

Table 17.1: Funds Disbursement by Category, 2013/14 - 2014/15

	2013/14	2014/15*
GoK Grants(KSh)
Youth Enterprise Fund(KSh)
Allocation of Social Protection Fund for Older Persons(KSh)	46,272,000	..
Number of Older Persons benefiting(Number)	1,615	..
Funds allocated to Orphans & Vulnerable Children(KSh)	4,800,000	9,600,000

Source: Social Services Department, Machakos County

*Provisional

Additional Information

Demographic, Health and Socio-Economic Indicators

Table 1: Demographic and Health Indicators

Fertility and Family Planning:	COUNTY	NATIONAL	SOURCE
Total Fertility Rate (Number of children per woman)	3.4	3.9	KDHS 2014
Percentage of women age 15-49 currently pregnant	3.9	6.3	KDHS 2014
Mean number of children ever born to women age 40-49	4.3	5.0	KDHS 2014
Current use of family planning methods among married women age 15-49 by Contraceptive method (%)			
Any Method	75.9	58.0	KDHS 2014
Any Modern Method	67.5	53.2	KDHS 2014
Any Traditional Method	8.3	48.0	KDHS 2014
Not Currently using	24.1	42.0	KDHS 2014
Maternal and Child Health			
Pregnant women who received antenatal care from skilled provider (%)	98.8	95.5	KDHS 2014
Pregnant women who received 4+ ANC visits(%)	60.8	57.6	KDHS 2014
Births assisted by a skilled provider(%)	63.4	61.8	KDHS 2014
Births delivered in a health facility (%)	62.9	61.2	KDHS 2014
Children 12-23 months who received specific vaccines (%)			
Fully vaccinated	86.7	67.5	KDHS 2014
BCG	100	96.1	KDHS 2014
Measles	97.2	87.1	KDHS 2014
All basic vaccinations	88.7	71.1	KDHS 2014
No vaccinations	0	1.6	KDHS 2014
Percentage with vaccination cards	93.1	74.7	KDHS 2014
Nutritional status of children			
Children under five years who are stunted(moderate or severe) %	26.5	26.0	KDHS 2014
Children under five years who are wasted(moderate or severe) %	7	4.0	KDHS 2014
Children under five years who are underweight (%)	8	11.0	KDHS 2014
Children under 5 years who are overweight or obese (%)	6	4	KDHS 2014
Malaria Prevention and Treatment			
Households with atleast one insecticide-treated net (ITN) (%)	56	58.7	KDHS 2014
Average number of ITN per household	1.1	1.1	KDHS 2014
Children under age 5 who slept under any net the night before the survey(%)	65	58.9	KDHS 2014
Children under age 5 who slept under an ITN the night before the survey(%)	62.9	54.1	KDHS 2014
HIV/AIDs-related knowledge			
HIV Prevalence	8.0	5.6	KAIS 2012
Women 15-49 years who know that HIV can be prevented by using Condoms and limiting sex to one uninfected partner(%)	75	77	KDHS 2014
Men 15-49 years who know that HIV can be prevented by using Condoms and limiting sex to one uninfected partner(%)	83	85	KDHS 2014
Women 15-49 years who have been tested for HIV in the past 12 months and received the results of the last test (%)	55	53	KDHS 2014
Men 15-49 years who have been tested for HIV in the past 12 months and received the results of the last test (%)	46	46	KDHS 2014

Source: Kenya Demographic and Health Survey 2014

Table 2: Poverty incidence by Constituency

Constituency	Total Population (Number)	Headcount Index: Percent of Individuals below Poverty Line	Constituency Contribution to National Poverty (%)	Constituency Ranking by Contribution to National Poverty
Masinga	125,222	61.3	0.5	58
Yatta	145,039	54.0	0.5	57
Kangundo	93,770	48.4	0.3	180
Matungulu	123,588	49.8	0.4	109
Kathiani	103,868	30.7	0.2	244
Mavoko	136,112	22.8	0.2	249
Machakos Town	194,848	34.5	0.4	85
Mwala	161,682	43.3	0.4	79
County	1,084,129	42.6	2.7	11

Source: *Spatial Dimensions of Well-Being in Kenya*, KNBS

*Provisional

Table 3: Population indicators

Indicator	County	National	Source
Dominant Land Cover	45.3		Socio-Economic Atlas
Growth Rate	3.3	2.8	Socio-Economic Atlas
Household Size	4.2	4.4	2009 KPHC, vol. 1B
Poverty Incidence	42.6	45.2	2015 Spatial Dimensions of Well-being in Kenya
Population Density	177.0	66.0	2009 KPHC, vol. 1B
Crude Birth Rate(per 1000 people)	45.1	38.4	Socio-Economic Atlas
Crude Death Rate(per 1000 people)	12.0	10.4	Socio-Economic Atlas
Maternal Mortality Rate(per 100,000 live births)	425.0	495.0	Socio-Economic Atlas
Child Mortality Rate(per 1000 live births)	56.0	79.0	Socio-Economic Atlas
Infant Mortality Rate(per 1,000)	27.0		MICS 2008
In-Migration(%)	14.6	20.9	Socio-Economic Atlas
General Sex Ratio	1.03	1.02	Socio-Economic Atlas
Percentage of Population under age 18	46.4	50.1	Socio-Economic Atlas
Percentage of Population Over age 64	5.0	3.5	Socio-Economic Atlas
Percentage of Orphanhood of Children Under Age 15	1.30	1.20	Socio-Economic Atlas
Percentage of Households with 1-3 People	42.8	42.0	Socio-Economic Atlas
Percentage of Households of Over 7 People	14.5	19.2	Socio-Economic Atlas
Percentage of Female Headed HHs	36.6	32.1	Socio-Economic Atlas

Table 4: Water, Sanitation & Energy Indicators

Indicator	County	National	Source
% of HHs with access to safe water	39.4	56.1	Socio-Economic Atlas
% of HHs using piped water	14.2	30.0	Socio-Economic Atlas
% of HHs using protected springs and wells	11.6	14.3	Socio-Economic Atlas
% of HHs using boreholes	13.0	11.0	Socio-Economic Atlas
% of HHs using unprotected springs/wells	18.5	10.1	Socio-Economic Atlas
% of HHs with access to improved sanitation	62.7	64.7	Socio-Economic Atlas
% of HHs using main sewer, septic tank, or cesspool	7.8	11.1	Socio-Economic Atlas
% of HHs using VIP or covered latrine	54.5	53.6	Socio-Economic Atlas
% of HHs using uncovered latrines or buckets	34.4	21.2	Socio-Economic Atlas
% of HHs using bush	2.6	13.6	Socio-Economic Atlas
% of HHs Using paraffin for lighting	79.2	69.5	Socio-Economic Atlas
% of HHs using Electricity for Lighting	17.0	22.7	Socio-Economic Atlas

Table 5: Household Assets & Communication

Indicator	County	National	Source
% of HHs with earthen floor	39.8	56.5	Socio-Economic Atlas
% of HHs with Cement floor	58.4	41.0	Socio-Economic Atlas
% of HHs with iron roofing	88.9	73.2	Socio-Economic Atlas
% of HHs with stone/brick walls	86.1	33.4	Socio-Economic Atlas
% of HHs owning bicycles	32.8	25.3	Socio-Economic Atlas
% of HHs owning a radio	81.6	74.0	Socio-Economic Atlas
% of HHs owning a TV	25.8	28.0	Socio-Economic Atlas
% of HHs owning Mobile Phone	67.7	63.2	Socio-Economic Atlas
% of HHs using the internet	4.4	5.7	Socio-Economic Atlas

Table 6: Education

Indicator	County	National	Source
Net primary school attendance rate	90.1%	77.1%	Socio-Economic Atlas
Primary school attendance rate of underage/overage students	36.6%	33.4%	Socio-Economic Atlas
Primary school gross attendance rate	126.6%	110.5%	Socio-Economic Atlas
Secondary school net attendance rate	28.6%	23.5%	Socio-Economic Atlas
Secondary school attendance of underage/overage students	29.0%	26.5%	Socio-Economic Atlas
Secondary school gross attendance rate	57.6%	50.0%	Socio-Economic Atlas
Gender Parity index for primary school attendance	0.97	0.97	Socio-Economic Atlas
Gender Parity index for secondary school attendance	0.98	0.91	Socio-Economic Atlas

Table 7: Economic Activities

Indicator	County	National	Source
% of employed labour force in small-scale agriculture and pastoralism	19.6%	32.8%	Socio-Economic Atlas
% of HHs owning livestock	54.7%	46.3%	Socio-Economic Atlas
% of employed labour force in informal sector	54.3%	44.3%	Socio-Economic Atlas
% of employed labour force in formal sector	24.9%	21.9%	Socio-Economic Atlas
% of unemployed in active labour force	9.4%	9.7%	Socio-Economic Atlas
% of economically inactive people in total labour force	29.3%	22.9%	Socio-Economic Atlas
Male participation rate	78.5%	81.8%	Socio-Economic Atlas
Female participation rate	62.8%	71.8%	Socio-Economic Atlas

Table 8 Population by sex, Households and Density by Sub Location, 2009

SUB-COUNTY	MACHAKOS	MALE	FEMALE	TOTAL	HHLDS	AREA	DENSITY
DIVISION	CENTRAL	97449	101762	199211	48979	925.2	215
LOCATION	TOWNSHIP	77252	79125	156377	39444	632.7	247
		7186	7512	14698	4327	5	2938
	SUB-LOC	4184	4230	8414	2961	2.7	3100
	SUB-LOC	3002	3282	6284	1366	2.3	2747
LOCATION	MUVUTI	4482	4702	9188	2023	21.1	436
	SUB-LOC	1871	1863	3734	798	9.6	388
	SUB-LOC	2611	2843	5454	1225	11.4	477
LOCATION	KIMUTWA	6871	6935	13806	3242	333.7	41
	SUB-LOC	1427	1616	3043	637	15.3	198
	SUB-LOC	3265	3270	6535	1541	47.3	138
	SUB-LOC	1386	1391	2777	642	15.4	181
	SUB-LOC	793	658	1451	422	255.7	6
LOCATION	KIIMAKIMWE	11420	11805	23225	6766	16	14555
	SUB-LOC	1078	1099	2177	456	3.5	619
	SUB-LOC	5285	5340	10625	3616	1.4	7582
	SUB-LOC	3038	3382	6420	1780	4.5	1414
	SUB-LOC	976	921	1897	461	1.6	1176
	SUB-LOC	1043	1063	2106	453	4.9	431
LOCATION	MUMBUNI	22732	23419	46151	11652	48.1	48.1
	SUB-LOC	4169	4324	8493	1934	12.6	675
	SUB-LOC	4771	4874	9645	2567	7	1380
	SUB-LOC	4119	4068	8187	1840	10.7	768
	SUB-LOC	4034	4133	8167	1893	8.2	1003
	SUB-LOC	5639	6020	11659	3418	9.7	1199
LOCATION	KATHEKA KAI	9337	8483	17820	4087	131.8	135
	SUB-LOC	1578	1510	3088	688	8.6	360
	SUB-LOC	2240	1985	4225	938	37.5	113
	SUB-LOC	3303	3111	6414	1477	31.9	201
	SUB-LOC	2216	1877	4093	984	53.9	76
LOCATION	MUA HILLS	3857	3896	7753	1756	50.3	154
	SUB-LOC	1869	1837	3706	829	21.9	169
	SUB-LOC	1264	1312	2576	589	14.6	176
	SUB-LOC	724	747	1471	338	13.8	106
LOCATION	NGELANI	5097	5669	10766	2503	15.2	707
	SUB-LOC	1716	1860	3576	837	7.2	496
	SUB-LOC	1652	1807	3459	754	3.7	929
	SUB-LOC	1729	2002	3731	912	4.3	868
LOCATION	MUTITUNI	6270	6700	12970	3088	11.6	1121
	SUB-LOC	2540	2594	5134	1258	2.8	1839
	SUB-LOC	1791	1975	3766	880	4.9	771
	SUB-LOC	1939	2131	4070	950	3.9	1045
DIVISION	KALAMA	20197	22637	42834	9535	292.5	146
LOCATION	KALAMA	5254	5901	11155	2434	52.9	211
	SUB-LOC	2957	3328	6285	1419	35.4	178
	SUB-LOC	2297	2573	4870	1015	17.6	277
LOCATION	LUMBWA	6021	6454	12475	2820	148.6	84
	SUB-LOC	6021	6454	12475	2820	148.6	84
LOCATION	KYANGALA	3234	3860	7094	1652	30.2	235
	SUB-LOC	1040	1258	2298	541	10.5	220
	SUB-LOC	1155	1299	2454	568	7.8	313

SUB-LOC	KINOI	1039	1303	2342	543	11.9	197
LOCATION	KOLA	5688	6422	12110	2639	60.8	199
SUB-LOC	IIUNI	2072	2343	4415	986	26.6	166
SUB-LOC	KATANGA	3616	4079	7695	1643	34.2	225
SUB-COUNTY	MWALA	78942	84090	163032	35593	1017.9	160
DIVISION	MWALA	24985	26270	51255	11145	254.7	201
LOCATION	MBIUNI	10100	10722	20822	4417	91.4	228
SUB-LOC	MBIUNI	1999	2006	4005	870	14.4	316
SUB-LOC	MAKILIVA	1584	1747	3331	700	10.5	316
SUB-LOC	KABAA	1719	1697	3416	727	20.1	170
SUB-LOC	NYAANYA	2009	2295	4304	918	15.4	280
SUB-LOC	MUMBUNI	2789	2977	5766	1202	30.9	187
LOCATION	KATHAMA	5461	5859	11320	2599	55.4	204
SUB-LOC	ULAANI	1048	1101	2149	498	8.9	243
SUB-LOC	KWA MUTULA	1214	1331	2545	580	14	182
SUB-LOC	ITIKONI	996	1012	2008	442	13.7	147
SUB-LOC	MUTHWANI	1312	1478	2790	664	11.6	240
SUB-LOC	KATITU	891	937	1828	415	7.2	253
LOCATION	MWALA	9424	9689	19113	4129	107.9	177
SUB-LOC	KIBAU	2245	2234	4479	1043	14	319
SUB-LOC	MYANYANI	1336	1395	2731	559	13.7	199
SUB-LOC	KIVANDINI	876	894	1770	381	9	197
SUB-LOC	NGULINI	1250	1316	2566	506	17.8	144
SUB-LOC	KANGII	677	699	1376	327	20.5	67
SUB-LOC	KYAWANGO	699	750	1449	337	16.3	89
SUB-LOC	KAMWALA	2341	2401	4742	976	16.6	285
DIVISION	MASII	27754	29352	57106	12723	265.1	193
LOCATION	MASII	9116	9723	18839	4308	97.6	193
SUB-LOC	KITHANGANI	1620	1745	3365	694	16.6	202
SUB-LOC	UTITHINI	2851	2955	5806	1522	22.5	258
SUB-LOC	KAVUMBU	1229	1418	2647	566	17.2	154
SUB-LOC	MBAANI	1223	1439	2662	553	16.3	163
SUB-LOC	MITHINI	2193	2166	4359	973	24.9	175
LOCATION	VYULYA	4699	4934	9633	2070	34.9	276
SUB-LOC	MUUSINI	1100	1156	2256	495	7.2	315
SUB-LOC	UUNI	2466	2462	4928	1058	19.1	258
SUB-LOC	MITHANGA	1133	1316	2449	517	8.7	283
LOCATION	MUTHETHENI	7495	8125	15620	3435	93.4	167
SUB-LOC	NYAANI	861	955	1816	373	8.6	210
SUB-LOC	KANG'ETHE	935	1005	1940	447	10.3	189
SUB-LOC	KIONYWENI	958	1078	2036	434	13.9	146
SUB-LOC	KYETHIVO	1619	1837	3456	766	17.8	194
SUB-LOC	KALYAMBEU	1155	1322	2477	538	14.4	172
SUB-LOC	EMBUI	1967	1928	3895	877	28.3	138
LOCATION	MAKUTANO	3965	4142	8107	1778	45.5	178
SUB-LOC	MATHUNTHINI	1211	1253	2464	512	11.5	214
SUB-LOC	MAWELI	1659	1791	3450	781	24.8	139
SUB-LOC	KYAMUTWII	1095	1098	2193	485	9.1	240
LOCATION	MANGO	2479	2428	4907	1132	23.8	206
SUB-LOC	WETAA	1102	1055	2157	492	12	179
SUB-LOC	KYANGANGA	1377	1373	2750	640	11.7	234
DIVISION	YATHUI	17704	19040	36744	8010	283.3	130
LOCATION	YATHUI	5075	5528	10603	2295	95.9	111
SUB-LOC	KYAMATULA	1844	2033	3877	856	28.9	134
SUB-LOC	KWA-KALA	1225	1341	2566	522	34.4	75
SUB-LOC	KYANGULUMI	2006	2154	4160	917	32.6	128

LOCATION	MIU	5253	5827	11080	2430	71.5	155
SUB-LOC	NGAMBA	953	1168	2121	440	11.6	183
SUB-LOC	KALAMBA	1019	1223	2242	474	16.7	134
SUB-LOC	KYAWIKYO	748	813	1561	361	10.3	151
SUB-LOC	KIKULUMI	851	790	1641	347	11.4	144
SUB-LOC	UTTHINI	1682	1833	3515	808	21.5	163
LOCATION	WAMUNYU	7376	7685	15061	3285	116	130
SUB-LOC	KYAWANGO	1861	1889	3750	868	17.8	211
SUB-LOC	KAMBITI	1555	1603	3158	784	28.2	112
SUB-LOC	KILEMBWA	1036	1091	2127	439	24.1	88
SUB-LOC	KAITHA	1540	1612	3152	651	26.5	119
SUB-LOC	NYAANI	1384	1490	2874	543	19.4	148
DIVISION	KIBAUNI	8499	9428	17927	3715	184.8	97
LOCATION	KIBAUNI	2327	2635	4962	1059	47.9	104
SUB-LOC	ITUMBULE	850	937	1787	404	14.6	123
SUB-LOC	MUKAA	721	827	1548	349	16.4	94
SUB-LOC	KITILE	756	871	1627	306	16.9	96
SUB-LOC	NGOMANO	2235	2296	4531	904	52.3	87
SUB-LOC	KILALA	1461	1532	2993	599	38.1	79
SUB-LOC	KIUNDWANI	774	764	1538	305	14.2	109
LOCATION	IKALAASA	3937	4497	8434	1752	84.6	100
SUB-LOC	NDITHINI	801	951	1752	366	22.7	77
SUB-LOC	MATULANI	640	786	1426	287	28	51
SUB-LOC	KAMUTHWA	1293	1412	2705	564	19.3	140
SUB-LOC	NGUNGI	1203	1348	2551	535	14.6	174
SUB-COUNTY	MASINGA	61106	64834	125940	27050	1402.8	89
DIVISION	MASINGA	41357	44711	86068	18311	1088.4	79
LOCATION	MASINGA	8419	9086	17505	3690	190.8	92
SUB-LOC	MASINGA	2370	2542	4912	1145	48	102
SUB-LOC	MUKUSU	2336	2393	4729	973	50	95
SUB-LOC	KATULYE	2323	2583	4906	989	59.6	82
SUB-LOC	MUSUMAA	1390	1568	2958	583	33.2	89
LOCATION	KIVAA	8282	8924	17206	3836	267.9	64
SUB-LOC	KIVAA	3569	3634	7203	1730	112.7	64
SUB-LOC	KAWEA	1981	2295	4276	912	44.7	55
SUB-LOC	IIANI	1554	1636	3190	666	58.1	48
SUB-LOC	KYONDONI	1178	1359	2537	528	52.4	64
LOCATION	KITHYOKO	7937	8949	16886	3495	254.6	64
SUB-LOC	KITHYOKO	2291	2520	4811	1127	57.2	66
SUB-LOC	EENDEI	1460	1722	3182	618	54.3	59
SUB-LOC	THATHA	2317	2603	4920	963	75.1	66
SUB-LOC	MIANGENI	1869	2104	3973	787	68	58
LOCATION	KANGONDE	7433	8025	15458	3137	197.7	78
SUB-LOC	KIKUMINI	2158	2356	4514	947	51.7	87
SUB-LOC	MIKUYUNI	1366	1480	2846	569	25.4	112
SUB-LOC	MUSINGINI	1869	2096	3965	795	53.3	74
SUB-LOC	KANGONDE	2040	2093	4133	826	67.3	61
LOCATION	IKAAATINI	3424	3606	7030	1524	61.1	115
SUB-LOC	IKAAATINI	1358	1449	2807	594	18.3	153
SUB-LOC	ITUNDUIMUNI	2066	2157	4223	930	42.8	99
LOCATION	EKALAKALA	5862	6121	11983	2629	116.3	103
SUB-LOC	NZUKINI	1958	2091	4049	860	43	94
SUB-LOC	EKALAKALA	3904	4030	7934	1769	73.3	108
DIVISION	NDITHINI	19749	20123	39872	8739	314.4	127
LOCATION	MUTHESYA	6653	7257	13910	3012	101.9	137
SUB-LOC	MUTHESYA	2351	2692	5043	1079	24.3	208

SUB-LOC	KATHUKINI	2368	2623	4991	1104	27.4	182
SUB-LOC	KIKULE	1934	1942	3876	829	50.2	77
LOCATION	MANANJA	6107	5968	12075	2689	62.8	192
SUB-LOC	KASUVILO	2709	2478	5187	1169	38.7	134
SUB-LOC	MANANJA	3398	3490	6888	1520	24.1	286
LOCATION	NDITHINI	6989	6898	13887	3038	149.8	93
SUB-LOC	MILAANI	1745	1498	3243	699	88.1	37
SUB-LOC	NDITHINI	2582	2855	5437	1183	17.6	310
SUB-LOC	KIATINENI	2662	2545	5207	1156	44.1	118
SUB-COUNTY	YATTA	71338	76241	147579	33162	1057.3	139
DIVISION	YATTA	44710	46405	91115	21420	491	186
LOCATION	KITHIMANI	12856	13187	26043	5935	150.3	173
SUB-LOC	KAMBI YA NDEKE	3272	3532	6804	1426	47.9	142
SUB-LOC	KITHIMANI	4200	4067	8267	2103	64.3	129
SUB-LOC	KITHENDU	5384	5588	10972	2406	38.1	288
LOCATION	MATUU	13389	13756	27145	7020	126.4	215
SUB-LOC	MATUU	5461	5422	10883	3557	14	775
SUB-LOC	KALULINI	3220	3266	6486	1353	46.2	141
SUB-LOC	KATULANI	1889	2086	3975	881	31.4	127
SUB-LOC	KAKUMINI	2819	2982	5801	1229	34.8	167
LOCATION	NDALANI	10606	11042	21648	4761	130.8	166
SUB-LOC	NDALANI	3034	3155	6189	1225	28.4	218
SUB-LOC	MAMBA	3872	3799	7671	1809	46.6	165
SUB-LOC	KIVINGONI	3700	4088	7788	1727	55.8	140
LOCATION	MAVOLONI	7859	8420	16279	3704	83.5	195
SUB-LOC	KISIIKI	2012	2264	4276	976	16.2	264
SUB-LOC	MAVOLONI	2753	2809	5562	1272	34.8	160
SUB-LOC	KWA NDOLO	3094	3347	6441	1456	32.5	198
DIVISION	IKOMBE	16354	18329	34683	7049	331.4	105
LOCATION	IKOMBE	7998	8973	16971	3476	138	123
SUB-LOC	KYASIONI	1849	1883	3732	781	27.1	138
SUB-LOC	KITHEUNI	2493	2774	5267	1035	34.2	154
SUB-LOC	IKOMBE	3656	4316	7972	1660	76.6	104
LOCATION	KINYAATA	8356	9356	17712	3573	193.4	92
SUB-LOC	KINYAATA	2637	2922	5559	1125	60.3	92
SUB-LOC	MAKUTANO	2604	2876	5480	1067	54.1	101
SUB-LOC	MATHING'AU	3115	3558	6673	1381	79	84
DIVISION	KATANGI	10274	11507	21781	4693	234.9	93
LOCATION	KATANGI	4900	5579	10479	2449	94	111
SUB-LOC	KATANGI	2524	2798	5322	1402	37.8	141
SUB-LOC	MEKILINGI	2376	2781	5157	1047	56.2	92
LOCATION	KYUA	5374	5928	11302	2244	140.9	80
SUB-LOC	KYUA	3124	3328	6452	1314	84	77
SUB-LOC	SYOKISINGA	2250	2600	4850	930	56.9	
SUB-COUNTY	KANGUNDO	46202	48165	94367	22095	177.2	532
DIVISION	KAKUYUNI	16191	16926	33117	7688	71.8	461
LOCATION	KAWETHEI	7929	8314	16243	3679	34.4	472
SUB-LOC	KAWETHEI	1777	1887	3664	856	5.8	635
SUB-LOC	MUKUNIKE	1756	1878	3634	824	6.9	526
SUB-LOC	KATHAANA	2674	2627	5301	1148	15.1	351
SUB-LOC	MBUSYANI	1722	1922	3644	851	6.6	551
LOCATION	KAKUYUNI	8262	8612	16874	4009	37.4	451
SUB-LOC	KAKUYUNI	1987	2155	4142	1025	8.6	485
SUB-LOC	KAVILINGUNI	1843	1946	3789	903	9.1	415
SUB-LOC	KATHOME	1819	1897	3716	869	7.6	491
SUB-LOC	KYEVALUKI	2613	2614	5227	1212	12.1	430

DIVISION	KANGUNDO	30011	31239	61250	14407	105.4	581
LOCATION	KANGUNDO	14215	14548	28763	6954	38	756
SUB-LOC	ISINGA	3344	3342	6686	1642	8.6	775
SUB-LOC	MUISUNI	3151	3053	6204	1687	6.1	1017
SUB-LOC	MATETANI	3496	3743	7239	1664	11.4	636
SUB-LOC	MAIUNI	2303	2418	4721	1090	5.8	822
SUB-LOC	NDUNDUNI	1921	1992	3913	871	6.2	634
LOCATION	KIVAANI	6807	7197	14004	3193	36.3	386
SUB-LOC	NGUMUTI	2207	2304	4511	1057	9.6	471
SUB-LOC	KATITU	1279	1370	2649	595	6.6	403
SUB-LOC	MIU	1119	1202	2321	523	8.4	278
SUB-LOC	IIA-ITUNE	2202	2321	4523	1018	11.8	385
LOCATION	KANZALU	8989	9494	18483	4260	31.1	594
SUB-LOC	KITWII	1935	2025	3960	927	5.7	693
SUB-LOC	KAWAUNI	1717	1820	3537	778	6.7	532
SUB-LOC	KIKAMBUANI	2923	3148	6071	1404	11.7	519
SUB-LOC	MBILINI	2414	2501	4915	1151	7	699
SUB-COUNTY	MATUNGULU	62030	62706	124736	28727	577.5	215
DIVISION	MATUNGULU	62030	62706	124736	28727	577.5	216
LOCATION	NGULUNI	6589	6782	13371	2941	58.8	228
SUB-LOC	KWANGII	1122	1032	2154	470	18.8	114
SUB-LOC	KITHIMANI	1388	1480	2868	647	10.9	262
SUB-LOC	KITHUANI	1925	1993	3918	870	18.4	213
SUB-LOC	NGULUNI	2154	2277	4431	954	10.6	417
LOCATION	TALA	12911	13386	26297	6367	34.1	770
SUB-LOC	KYAUME	4377	4378	8755	2287	6	1448
SUB-LOC	SENGANI	4750	4860	9610	2370	13.8	699
SUB-LOC	KATINE	3784	4148	7932	1710	14.4	553
LOCATION	KOMAROCK	7438	6678	14116	3408	189.9	74
SUB-LOC	KOMA	2272	1858	4130	1165	66.4	62
SUB-LOC	MUNGENGESYA	1140	820	1960	533	53.4	37
SUB-LOC	MATUU	2183	2161	4344	982	45.2	96
SUB-LOC	KWALE	1843	1839	3682	728	25	147
LOCATION	MATUNGULU	10544	11181	21725	5014	40	543
SUB-LOC	MWATATI	1727	1880	3607	824	3.7	965
SUB-LOC	KINGOTI	2886	2882	5768	1330	11.3	512
SUB-LOC	KAMBUSU	2026	2171	4197	934	3.9	1065
SUB-LOC	MATHEINI	2433	2581	5014	1208	10.6	475
SUB-LOC	KATHEKA	1472	1667	3139	718	10.5	298
LOCATION	KYANZAVI	12615	12426	25041	5898	168.6	149
SUB-LOC	KIANZABE	2335	2088	4423	1021	44.3	100
SUB-LOC	KWA-KUKMBU	1073	1012	2085	482	22.1	95
SUB-LOC	KAYATA	2438	2319	4757	1064	25.6	186
SUB-LOC	UAMANI	2028	2040	4068	860	28.3	144
SUB-LOC	KIBOKO	4741	4967	9708	2471	48.4	201
LOCATION	KYELENI	7008	7048	14056	2879	63	223
SUB-LOC	KYELENI	3115	3201	6316	1302	32.2	196
SUB-LOC	KWOSAU	1736	1657	3393	686	10.8	315
SUB-LOC	KITULUNI	940	934	1874	394	12	156
LOCATION	NZAMBANI	1217	1256	2473	497	8	311
SUB-LOC	KALANDINI	4925	5205	10130	2220	23.2	437
SUB-LOC	KALANDINI	3635	3819	7454	1623	18.2	409
SUB-LOC	MBUNI	1290	1386	2676	597	5	540
SUB-COUNTY	ATHI RIVER	76127	63375	139502	45482	843.2	165
DIVISION	ATHI RIVER	76127	63375	139502	45482	843.2	165
LOCATION	ATHI RIVER	27238	24055	51293	17949	77.8	659

SUB-LOC	ATHI RIVER NORTH	790	782	1572	353	38.3	41
SUB-LOC	ATHI RIVER						
SUB-LOC	TOWNSHIP	26448	23273	49721	17596	39.5	1260
LOCATION	KATANI	30445	25089	55534	17919	173	321
SUB-LOC	KATANI	5058	4925	9983	2541	40.8	245
SUB-LOC	NGELANI	1921	1476	3397	1046	95	36
SUB-LOC	SYOKIMAU	23466	18688	42154	14332	37.3	1130
LOCATION	LUKENYA	18444	14231	32675	9614	592.4	55
SUB-LOC	MATHATANI	5983	4486	10469	3247	282.6	37
SUB-LOC	KINANIE	4024	3045	7069	2140	129.3	55
SUB-LOC	MUTHWANI	8437	6700	15137	4227	180.4	84
SUB-COUNTY	KATHIANI	49945	54272	104217	23412	207.1	503
DIVISION	KATHIANI	49945	54272	104217	23412	207.1	503
LOCATION	MITABONI	14402	15653	30055	6963	80.5	373
SUB-LOC	MITABONI	3304	3387	6691	1602	14.7	454
SUB-LOC	MIUMBUNI	2199	2316	4515	1021	11.5	393
SUB-LOC	KINYAU	2507	2634	5141	1161	31.6	163
SUB-LOC	MATHUNYA	1894	2159	4053	934	7.1	574
SUB-LOC	THINU	2187	2543	4730	1143	7.6	627
SUB-LOC	NGIINI	2311	2614	4925	1102	8.1	608
LOCATION	KATHIANI	11607	12783	24390	5635	38.4	635
SUB-LOC	KAIANI	2252	2465	4717	1108	11	429
SUB-LOC	NGOLENI	2447	2684	5131	1150	7.1	723
SUB-LOC	MBEE	2505	2781	5286	1161	7.5	707
SUB-LOC	LITA	1685	1848	3533	805	5.8	610
SUB-LOC	KATHIANI	2718	3005	5723	1411	7.1	811
LOCATION	KAWEA	10623	11723	22346	4920	37.4	597
SUB-LOC	KAWEA	2577	2804	5381	1162	7.1	754
SUB-LOC	KALUNGA	2256	2398	4654	1019	4.9	941
SUB-LOC	KATHIA	1803	2023	3826	898	5.4	712
SUB-LOC	KAUTI	2118	2350	4468	998	10.7	418
SUB-LOC	ITHAENI	1869	2148	4017	843	9.3	432
LOCATION	IVETI	13313	14113	27426	5894	50.7	541
SUB-LOC	IVETI	1688	1776	3464	747	5.9	587
SUB-LOC	KITUNDUNI	1899	1976	3875	821	7.5	518
SUB-LOC	KOMBU	2190	2392	4582	966	4.9	943
SUB-LOC	KAANI	3233	3490	6723	1457	20.6	326
SUB-LOC	KALILUNI	4303	4479	8782	1903	11.9	740

Table 9 Political Units by Constituency

SUB - COUNTY	WARDS	SUB - COUNTY	WARDS
Kathiani	Mitaboni Kathiani Central Upper Kaewa/Iveti Lower Kaewa/Kaani	Masinga	Masinga Central Kivaa Ekalakala Ndithini Muthesya
Yatta	Kithimani Ndalani Matuu Ikombe Katangi	Kangundo	Kangundo West Kangundo East Kangundo North Kangundo Central
Mwala	Mbiuni Makutano/Mwala Masii Muthetheni Wamunyu/Yathui Kibauni	Mavoko	Athi river Syokimau/Mlolongo Kinanie Mutwani
Matungulu	Tala Matungulu West Matungulu East Kyleni Matungulu North	Machakos	Mua Mutituni/Ngelani Machakos Central Mumbuni North Kiima Kimwe/Muvuti Kalama/Kimutwa Kola/Muumandu

Source: Independent Electoral & Boundaries Commission

Table 10 Administrative Units

SUB - COUNTY	DIVISION	LOCATION	SUB - LOCATION	SUB - COUNTY	DIVISION	LOCATION	SUB - LOCATION
Machakos	Central	Mua Hills	Kyanda Mua Hills Kyaani	Kathiani	Kathiani	Mitaboni	Mitaboni Miumbuni Kinyau Mathunya Thinu Ngiini
		Ngelani	Nzoweni Ngelani Kamuthanga			Kathiani	Kaiani Ngoleni Mbee Lita Kathiani Kaewa Kalunga Kithia Kauti Ithaeni
		Mutituni	Nduu Mutituni Kivutini			Kaewa	Kaewa Kalunga Kithia Kauti Ithaeni
		Kathekakai	Kitanga Mikuyu Katelembo Kathekakai			Iveti	Iveti
		Mumbuni	Mungala Kasinga Upper Kiandani Lower Kiandani Misakwani				Kitunduni Kombu Kaani Kaliluni Athi river town Olo Shaiki Athi river north
		Township	Eastleigh Mjini			Athi river	Mavoko
		Kiime Kimwe	Muthini Mwanyani Katoloni Mbilini Kiima Kimwe			Mavoko	Mavoko Katani
		Muvuti	Muvuti Kivandani			Githunguri	Githunguri Kamulu
		Kimutwa	Kyanzasu Kaathi Kimutwa Konza			Katani	Katani Ngelani
		Lumbwa	Muumandu			Mlolongo	Mlolongo Syokimau
		Kalama	Kiitini Nziuni			Kinanie	Kinanie Kwamboo Mathatani
		Kyangala	Kakuyuni Kyangala Kinoi			Kinanie/Mat hatani	
		Kola	Katanga liuni			Lukanya	Lukanya Muthwani
	Kalama			Athi river	Mavoko		

Administrative Units Cont

SUB - COUNTY	DIVISION	LOCATION	SUB - LOCATION	SUB - COUNTY	DIVISION	LOCATION	SUB - LOCATION
Yatta	Yatta	Kithimani	Kambi ya Ndeke Kithimani Kithendu	Mwala	Mwala	Mbiuni	Mbiuni Makiliva Kabaa Nyanyaa Mumbuni
		Matuu	Matuu Kaluluni Katulani Kakumini			Kathama	Ulaani Kwa Mutula Itikoni Muthwani Katitu
		Ndalani	Ndalani Mamba Kivingoni			Mwala	Kibau Myanyani Kivandani Ngulini Kangii Kyawango Kamwala
		Mavoloni	Kisiiki Mavoloni Kwa Ndolo			Yathui	Kyamatula Kwa Kala Kyangulum i
	Ikombe	Ikombe	Kyasioni Kitheuni Ikombe		Yathui	Miu	Ngamba Kalamba Kyawikyo Kikulumi Utithini
		Kinyaata	Kinyaata Makutano Mathing'au			Wamunyu	Kyawango Kambiti Kilembwa Kaitha Nyaani
	Katangi	Katangi	Katangi Mekilingi			Ngomano	Kilala Kiunduani
		Kyua	Kyua Syokisinga			Ikalaasa	Ndithini Matulani Kamuthwa Ngungi
	Masii	Masii	Kithangaini Utithini Kavumbu Mbaani Mithini		Kibauni	Kibauni	Itumbule Mukaa Kitile
		Vyulya	Muusini Uuni Mithanga				
		Muthetheni	Nthaani Kangethe Kionyweni Kyethivo Kalyambeu Embui				
		Makutano	Mathunthini Maweli Kyamutwii				
		Mango	Wetaa Kyanganga				
Mwala							

Administrative Units Cont

SUB-COUNTY	DIVISION	LOCATION	SUB - LOCATION	SUB-COUNTY	DIVISION	LOCATION	SUB - LOCATION	
Masinga	Masinga	Masinga	Masinga Mukusu Katulye Musumaa	Matungulu	Kyanzavi	Kyeleni	Kituluni Kyeleni Kwosau Nzambani	
		Kivaa	Kivaa Kaewa Iiani Kyondoni			Kyanzavi	Kumbu Kianzabe Kayata Uamani	
		Kithyoko	Kithyoko Eendei Thatha Miangueni			Kiboko	Kiboko	
		Kangonde	Kikumini Mikuyuni Musingini Kangonde	Kangundo	Kivaani	Kivaani	Ia Itune Ngumuti Katitu Miu Kivi	
		Ikaatini	Ikaatini Itunduimuni			Kakuyuni	Kakuyuni	Kakuyuni Kyevaluki
		Ekalakala	Nzukini Ekalakala		Katheini		Kathome Kavilinguni	
		Ndithini	Muthesya		Muthesya Kathukini Kikule		Kathaana	Kathaana Kithongoni
			Mananja		Kasuviolo Mananja		Kawethei	Mbusyani Mukunike Kawethei
			Ndithini		Milaani Ndithini Kiatineni	Isinga	Matetani Ndunduni Isinga Mulingana	
	Matungulu			Kyaume Katine	Kangundo	Kitwii	Kitwii Kawauni	
			Matungulu	Muthwani Kambusu		Kanzalu	Mbilini Kiliku Kikambuani	
				Mwatati Kingoti		Kangundo	Maiuni Muisuni	
			Matheini	Matheini Katheka				
Central		Matuu	Wendano Matuu Kwale					
		Komarock	Koma Mukengesya					
		Kalandini	Katangini Mbuni Kalandani					

Kenya's 47 Counties

Code	County	Area (Km ²)	Population 2014	County Headquarters
1	Mombasa	218.9	1,106,444	Mombasa
2	Kwale	8,270.2	765,831	Kwale
3	Kilifi	12,609.7	1,307,185	Kilifi
4	Tana River	38,436.9	282,958	Hola
5	Lamu	6,273.1	119,641	Lamu
6	Taita Taveta	17,084.0	334,042	Wundanyi
7	Garissa	44,175.0	416,389	Garissa
8	Wajir	56,685.8	442,371	Wajir
9	Mandera	25,991.5	685,510	Mandera
10	Marsabit	70,961.2	309,557	Marsabit
11	Isiolo	25,336.1	152,332	Isiolo
12	Meru	6,936.2	1,441,361	Meru
13	Tharaka Nithi	2,638.8	388,202	Kathwana
14	Embu	2,818.0	548,569	Embu
15	Kitui	30,496.5	1,075,866	Kitui
16	Machakos	6,208.2	1,167,480	Machakos
17	Makueni	8,008.8	939,879	Wote
18	Nyandarua	3,245.3	659,848	Oi Kalou
19	Nyeri	3,337.1	767,560	Nyeri
20	Kirinyaga	1,479.1	584,377	Kerugoya
21	Murang'a	2,558.8	1,042,929	Murang'a
22	Kiambu	2,543.4	1,795,999	Kiambu
23	Turkana	68,680.3	1,009,225	Lodwar
24	West Pokot	9,169.4	605,033	Kapenguria
25	Samburu	21,022.2	264,284	Maralal
26	Trans Nzoia	2,495.5	966,197	Kitale
27	Uasin Gishu	3,345.2	1,054,805	Eldoret
28	Elgeyo Marakwet ..	3,029.8	436,631	Iten
29	Nandi	2,884.2	888,435	Kapsabet
30	Baringo	11,015.3	655,641	Kabarnet
31	Laikipia	9,461.9	470,965	Nanyuki
32	Nakuru	7,495.1	1,891,739	Nakuru
33	Narok	17,933.1	1,003,672	Narok
34	Kajiado	21,901.0	810,918	Kajiado
35	Kericho	2,440.5	887,659	Kericho
36	Bomet	2,509.8	861,397	Bomet
37	Kakamega	3,051.2	1,812,330	Kakamega
38	Vihiga.....	530.9	605,379	Mbale
39	Bungoma.....	3,032.2	1,500,990	Bungoma
40	Busia.....	1,695.0	812,036	Busia
41	Siaya.....	2,530.4	941,724	Siaya
42	Kisumu.....	2,085.9	1,083,268	Kisumu
43	Homa Bay.....	3,183.3	1,077,554	Homa Bay
44	Migori.....	2,596.4	1,025,422	Migori
45	Kisii.....	1,317.5	1,288,290	Kisii
46	Nyamira.....	899.3	668,863	Nyamira
47	Nairobi City.....	695.1	4,004,400	Nairobi

Source: Kenya National Bureau of Statistics